

# Poultry Market Reports

## Nest Run Eggs

Prices are from Egg Clearinghouse, Inc., (ECI) Durham, N.H. and reflect trading prices for gradeable nest run eggs (GNR) on ECI, a nationwide trading center for producers, packers and marketers. GNR eggs are classified by weight in 30-dozen cases, and traded in lots of either 300 or 750 cases. Prices are FOB buyers dock, and are computed Tuesday and Thursday of each week. This week's prices for each classification were:

| Classification   | New Weight Per Case | Tuesday | Thursday |
|------------------|---------------------|---------|----------|
| Extra Large      | 51 lbs.             | 0       | 0        |
| Class 1 - Large  | 48 lbs.             | 63      | 65       |
| Class 3 - Medium | 42 lbs.             | 56      | 61       |
| Class 4 - Small  | 39 lbs.             | 45      | 51       |
| Breaking Stock   | 48 lbs.             | 54      | 54       |
| Checks           | 48 lbs.             | 43      | 43       |

## New England Weekly Shell Egg Report

Tuesday, November 13

Prices paid per dozen Grade "A" brown eggs in cartons delivered to retail stores:

|         | EX LARGE | LARGE | MEDIUM | SMALL |
|---------|----------|-------|--------|-------|
| MASS+   | 73-78    | 71-74 | 67-71  | 54-58 |
| Mostly  | 74-76    | 72-74 | 68-70  | 55-57 |
| N. H.   | 72-76    | 70-74 | 66-70  | 53-57 |
| Mostly  | 74-75    | 72-73 | 68-69  | 55-56 |
| R. I.   | 74-75    | 71-72 | 68-69  | 55-56 |
| Mostly  |          |       |        |       |
| VERMONT | 74-82    | 72-79 | 68-75  | TFEWR |
| Mostly  |          |       |        |       |
| MAINE   | 74-76    | 72-74 | 68-70  | 55-57 |
| Mostly  |          |       |        |       |

+ Includes Central and Western Sections Only.

## Eastern Pa. & N.J.

Wednesday, Nov. 14

### Live Poultry

Prices on light type hens held unchanged. Demand fair to good for adequate offerings. In instances, cancellations noted because of advancing egg prices. Offerings of heavy type hens adequate for a fairly good holiday interest. Offerings of turkeys adequate for a fairly good call.

Prices paid at farm: Light type hens 12-16½, mostly 15½-16 in PA, mostly 15-16½ in N.J. Heavy type hens TFEWR

## Delmarva

Wednesday, Nov. 14

### Broiler-Fryer Market

Ready to cook movement fair though becoming less aggressive as the holiday approaches. Slaughter schedules about steady. Less than trucklot prices tending lower on both plant and US Grade A. Live supplies fully adequate though weights still in a wide range from light to heavy. Undertone weak and unsettled.

Pool trucklot prices for Thursday arrival US Grade A 34-40, mostly 35; Plant Grade 33-38, mostly 34.

## Oklahoma City

Thursday, November 15

Estimated Receipts 8,700  
Same Day Last Week 10,287  
Same Day Last Year 11,123

Fairly active, feeder cattle and calves steady to strong, some sales on steers and heifers over 500 pound 50c higher; majority receipts Good and Choice 325-750 pound steers and 300-650 pound heifers; fairly large attendance buyers.

FEEDER STEERS: Choice, few Prime 300-400 pound 62.00-67.75; small lot 260 pound at 69.50; 400-500 58.75-63.75; part load 425 pound at 66.50; 500-600 52.00-59.70, 600-700 49.75-54.60; 700-800 47.75-50.90; 800-876 46.50-49.80; mixed Good and Choice

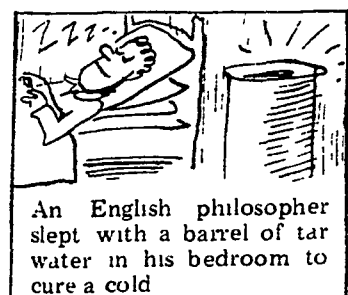
## Lancaster Farming

P O Box 266 - Lititz, Pa 17543  
Office. 22 E Main St., Lititz, Pa. 17543  
Record-Express Office Bldg.  
Phone Lancaster 717-394-3047 or Lititz 717-626-2191  
Richard E. Wanner, Editor  
Subscription price: \$2 per year in Lancaster County; \$3 elsewhere

Established November 4, 1955  
Published every Saturday by Lancaster Farming.  
Lititz, Pa.

Second Class Postage paid at Lititz, Pa 17543

Members of Newspaper Farm Editors Assn., Pa. Newspaper Publishers Association, and National Newspaper Association



An English philosopher slept with a barrel of tar water in his bedroom to cure a cold

Try A Classified Ad!

## Egg Market

Wednesday, Nov. 14

### Baltimore Eggs

Prices advanced 3-5 cents. Demand fair to good. Supplies adequate but in close balance to needs.

Cartoned eggs: Prices to retailers, state graded (min. one case sale) white

Grade A Large 76-82, mostly 76-78.

Grade A Medium 72-78, mostly 72-73.

Wednesday, Nov. 14

### Philadelphia Eggs

Prices steady. Cartoning demand fairly good on all sizes. Offerings more readily available in some quarters following recent price advances. Undertone steady to firm.

Prices to retailers: Sales to volume buyers, consumer grades white eggs in cartons.

### Delivered Store Door

|          |    |     |
|----------|----|-----|
| A Extra  | 74 | 75½ |
| Large    | 73 | 74½ |
| A Large  | 67 | 68½ |
| A Medium |    |     |

## Fogelsville

November 13, 1973

(Prices paid dock weights cents per lb.)

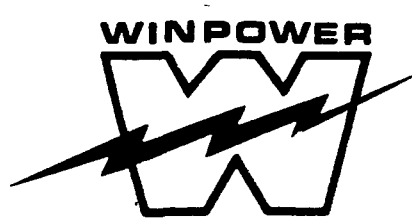
Light type hens 10-17; Heavy type hens 14-26; Pullets 22-39; Roasters 28½-37, mostly 32-35; Capons 23-62, mostly 37-55; Ducks 30½-71, mostly 55-65; Drakes 28-76, mostly 67-74; Geese 30-59; Turkeys - Toms 44-49; Turkeys - Hens 48-57; Rabbits 50-1.03, mostly 75-86; Guineas 43-90, mostly 80-90; Pigeons (per pr.) 60-4.15, mostly 1.12-1.25.

Total coops sold 770.

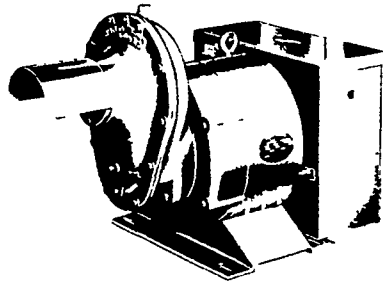
Poultry received Monday 7 p.m. to 10:30 p.m. Tuesday 7 a.m. to 12 Noon. Sale at 11:30 a.m.

Directions — Take Rt. 22 thruway. Exit at Fogelsville exit. North on stoplight in Fogelsville, turn left, proceed 1 mile.

TRY A  
CLASSIFIED  
AD!



TRACTOR DRIVEN  
ALTERNATORS



BUY OR LEASE

YOUR WINPOWER ALTERNATOR TODAY

CALL 717 733-7911

FOR AN APPOINTMENT ON YOUR FARM

L. J. EDWARDS

FARM SALES MGR.



ELECTROMECH

ELI CTROMECHANICAL SERVICE

ROUTE 222, EPHRATA, PA. 17522

PHONE (717) 733-7911

ELECTRIC MOTOR • GENERATOR • POWER TOOL SPECIALISTS

WORLD'S LARGEST  
MFG. OF  
TRACTOR-DRIVEN  
ALTERNATORS

with 45 years continuous experience to give you the best quality unit for long years of service, and to protect your family against huge losses due to power outages, and brown outs.

LP NATURAL GAS  
GASOLINE  
DIESEL  
ENGINE GEN.  
SETS TO  
200,000 WATTS

## Weekly New York Egg Market

From Monday, November 12th to Friday, November 16th

|                | Mon. | Tues. | Wed. | Thurs. | Fri. |
|----------------|------|-------|------|--------|------|
| WHITE          |      |       |      |        |      |
| Fcy. Ex. Large | 71   | 71    | 71   | 72     | 72   |
| Large          | 69   | 69    | 69   | 70     | 70   |
| Mediums        | 65   | 65    | 65   | 66     | 66   |
| Pullets        | 56   | 56    | 56   | 57     | 57   |
| Peeewe         | 42   | 42    | 42   | 42     | 42   |

|            |          |    |    |    |    |
|------------|----------|----|----|----|----|
| BROWN      |          |    |    |    |    |
| Fcy. Large | 69       | 69 | 69 | 70 | 70 |
| Mediums    | Unquoted |    |    |    |    |
| Pullets    | Unquoted |    |    |    |    |
| Peeewe     | Unquoted |    |    |    |    |

|                 |    |    |    |    |    |
|-----------------|----|----|----|----|----|
| Off Grade Large | 63 | 63 | 63 | 64 | 64 |
| Checks          | 41 | 41 | 41 | 42 | 42 |

Long Tone — Full steady to firm.

Copyright 1973 Urner Barry Publications

## Pa. Broiler Placements Up 28 pct.

Placements of broiler chicks in the Commonwealth during the week ending November 10, 1973 were 1,295,000. The placements were 28 percent above the corresponding week a year earlier and 15 percent above the previous week. Average placements during the past 10 weeks were 15 percent above a year earlier.

Settings for broiler chicks were 1,971,000 - approximately the same as the previous week and 21 percent above the comparable period a year earlier. The current 3-week total of eggs set is 19 percent above the same period a year ago.

Inshipments of broiler-type chicks during the past 10 weeks averaged 17,000 compared with 14,000 a year ago. Outshipments averaged 282,000 during the past 10 weeks, 34 percent above a year earlier.

Placements in the 21 States were 54,945,000 - 12 percent above the previous week and about the same as the comparable week a year earlier. Average placements during the past 10 weeks were 1 percent above a year ago.

Settings were 72,936,000 - 3 percent above the previous week and 1 percent above a year

earlier. The current 3-week total of eggs set is 1 percent above the comparable period a year ago.



A Canadian thought he could stamp out disease by cutting the bottoms off all his socks to let his feet breathe.

## LANCASTER SILO CO., INC.

2436 Creek Hill Rd.

or

2008 Horse Shoe Rd.

Lancaster, Pa.

BEFORE  
YOU BUY  
ANY SILO  
OR SILO  
EQUIPMENT  
ASK FOR  
OUR  
SPECIAL  
NOV.-DEC.  
EARLY  
ORDER  
DISCOUNTS

CALL  
OR  
CONTACT

## Larry Hiestand

Sales Representative  
Phone 717-392-9062  
(Home) 717-273-7394

Free Plans For  
Feed Lot Systems

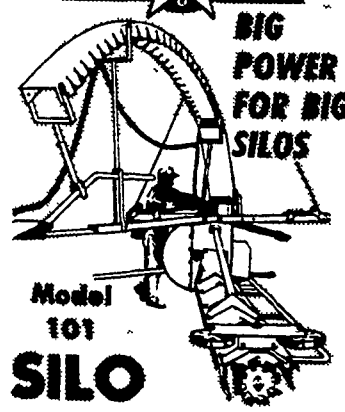
Starline Unloaders  
Conveyor & Bunk  
Feeding Systems

ROLLER MILLS

Water Bowl and  
Livestock Waterers  
(Electric & Gas)

Round Hay Racks

STARLINE



Model  
101  
SILO  
UNLOADER