

## Farm Women Calendar

Saturday, November 10

1:30 p.m. - Farm Women Society 10 meeting, Refton Fire Hall.  
1:30 p.m. - Farm Women Society 19 meeting, home of Mrs. J. Lloyd Hollinger, East Petersburg.  
1:30 p.m. - Farm Women Society 25 meeting.  
2 p.m. - Farm Women Society 6 meeting, Mrs. Musser Heisey, hostess.

2 p.m. - Farm Women Society 7 meeting.

Farm Women Society 7 meeting, home of Mrs. Carlton Homsher, Ronks.

Monday, November 12

7:30 p.m. - Farm Women Society 29 meeting, home of Mrs. Marion Brenneman.

Tuesday, November 13

1 p.m. - Farm Women Society 22 meeting, home of Darlene Herr.

Wednesday, November 14  
1:30 p.m. - Farm Women Society 14 meeting.

Thursday, November 15

1:30 p.m. - Farm Women Society 30 entertain guests, Conestoga View.  
Homemaker's Christmas Program, Farm and Home Center.

Saturday, November 17

2 p.m. - Farm Women Society 8 meeting, Lutheran Church, Mount Joy.

7:45 p.m. - Farm Women Society 27 Bowling night, Clearview Bowling Lanes.

Farm Women Society 3 meeting, Salem Lutheran Church, Ephrata.

Farm Women Society 18 meeting, home of Mrs. David E. Buckwalter.

### Ham For Party

Chopped ripe olives or sweet pickles blended with minced ham may be served in a mound on a lettuce leaf for an appetizer. Surround with saltines or wheat crackers. Or, hollow out cherry tomatoes and fill with minced ham seasoned with dill weed, celery seed or cut chives.

Lancaster Farming, Saturday, November 10, 1973-27



Ladies,  
Have  
You  
Heard?



By Doris Thomas,  
Extension Home Economist

Doris Thomas

### Think Bread

When you think of buying bread, you probably visualize a loaf of bread. But, bread doesn't always come in loaves.

Do you ever top a casserole dish with buttered bread crumbs? These days you can just open a package of crumbs and eliminate the job of making your own.

Maybe you like croutons to top your soup or salad. Open a container, if you like the extra convenience.

Or if you like stuffing with your poultry, open a package of poultry stuffing, add broth or hot water, and you have stuffing.

Melba toast is made from bread sliced very thin and toasted until it's crisp.

You may want to compare the costs of these convenience items with those you can make yourself. If you do compare, you may find they do cost more. But you are buying time and convenience. You have to decide which is more important.

### Processed Leathers

Leathers that stretch and are drycleanable may be in your future. Scientists at the United States Department of Agriculture's Agricultural Research Service have developed a process that gives leather new and improved properties. This development promises many advantages for the consumer.

The process consists of forming a synthetic compound within the leather by a chemical reaction. This process within the leather improves its physical characteristics permanently and to a much greater extent than the conventional surface treatments used today.

By varying conditions of treatment and the compound used in the treatment, the ARS scientists say many of leather's natural characteristics can be enhanced or suppressed--depending on the end use of the leather.

Most of the treatments were used, however, to produce a material of more uniform thickness. Leathers modified by the process were generally stronger. The scientists say some treated leathers will be drycleanable because the chemical reactions formed within the leathers can't be removed by drycleaning solvents.

With research continuing into the technical and economic feasibility of the new process, the textile industry may soon feature leather that is stretchable, firm, soft, strong, uniform and drycleanable.

### Pork Plus Potatoes

Oven-brown potatoes for a delicious platter-mate for pork loin roast. Simply cook, uncovered, in the pan with the roast for the last hour. Then, after the roast is removed and waiting to be carved, turn up the heat to 375°F, cover the pan and continue cooking the potatoes until tender, turning in the drippings several times.

More farmers each month prefer to buy their

- EAR CORN
- HAY ● STRAW

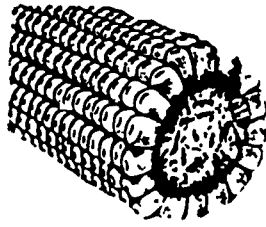
from us for better value and all around satisfaction. At farm or delivered, any quantity as your requirements may be

Area Code 717 687-7631

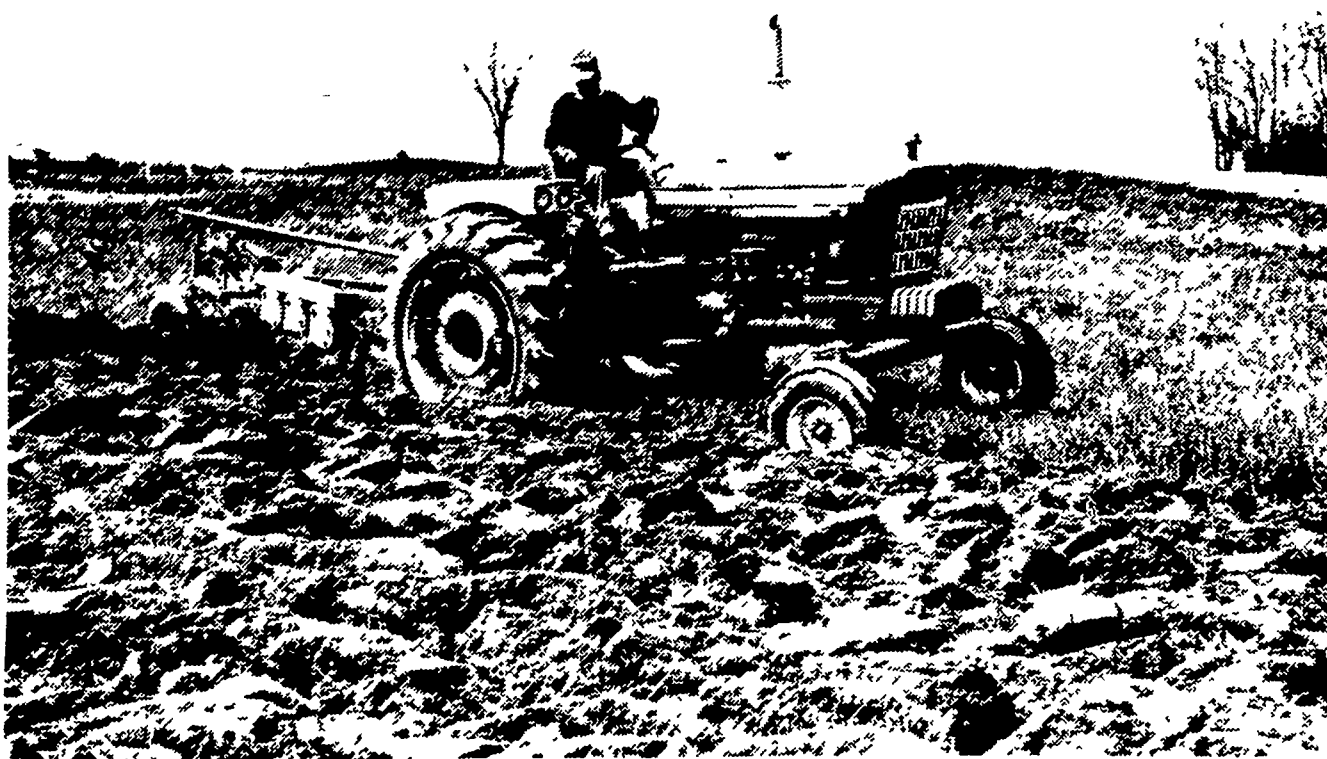
**ESBENSHADE TURKEY FARM**

"America's Oldest"

PARADISE, PA.



You can save money  
by doing your spring planning  
along with your fall plowing.



Now's the time to plan your needs for spring. You can make a better deal on equipment, take advantage of early order discounts on seed and fertilizer if you buy during the off season. Here's where a Farm Credit loan will enable you to save money.

But that's not the only way you save with a Farm Credit loan. Farm Credit calculates interest on the actual amount of

money in use (the unpaid balance of your loan). Furthermore, Farm Credit will cooperate with you in scheduling repayment of your loan to coincide with peak income periods. For over 50 years, Farm Credit has been financing every farm and farm family need on the same attractive terms. Why don't you take advantage of them, too? Call Farm Credit today.



411 W. ROSEVILLE RD.,  
LANCASTER  
PH. 393-3921

AGWAY BUILDING,  
LEBANON  
PH. 273-4506

## Wickes CLEAR SPAN Buildings

- Professionally engineered structures, wide clear spans.
- Rust-free aluminum or corrosion-resistant steel siding and roofing. Beautiful colors.
- Free planning service.

COMPARE OUR QUALITY.  
CHECK OUR LOW PRICE.



EPHRATA, PA.  
(717) 733-2312