



Rugged Construction
Solid Concrete Walls
Steel Reinforced

STAR SILOS

INTERNATIONAL
STAR SILO ASSOCIATION, Inc.
R D 1 MYERSTOWN PA 17067

DIAL (717)-866-5708 Write for FREE BOOKLET



Grind-in

A Grind-In is comparison at its best. You run a Mix-All. On your farm. With your grain. Note the finer, more uniform grind that results with lower tractor-power. Find out about the features and options that are important to you.

A SELF CONTAINED, SEALED HYDRAULIC DRIVE IS AVAILABLE



GEHL[®]
Gets into your system

A. L. HERR & BRO.

Quarryville, Pa. Phone 786-3521

Family Day Set Sunday At International Livestock Expo

Another Family Day program is set for this year's edition of the Keystone International Livestock Exposition. The mammoth event, which attracts nearly 4,000 head of sheep, swine, beef cattle and saddle horses from more than half of the 50 states, will run November 8-13 at the Farm Show.

Family Day in the past was on the Sunday immediately preceding the start of most of the judging. This year Family Day will still occur on Sunday, Nov. 11, but with the revamped schedule of events, it is caught up right in the middle of the six days and nights of activity.

Family Day is an open invitation from the Pennsylvania Livestock and Allied Industries Association and the Pennsylvania Department of Agriculture, co-sponsors of the Keystone International, to everyone—particularly non-farm residents—to come to the Farm Show buildings and learn firsthand that there is more to putting meat on the table than just making a purchase from your favorite butcher.

All of the events start at noon on Sunday with a twin feature in the main arena that has a distinct flavor of the old West. Simultaneously, judges will be making decisions on the merit of registered Quarter Horses, a cowboy's favorite, and beef cattle breeding stock. The latter will be Herefords and Polled Herefords.

Sheep and swine judging will be for market-ready animals only with all of the entrants consigned to the slaughterhouse the following morning. The swine will be shown in the small arena while sheep judging will be in a special enclosure on the main exhibition floor.

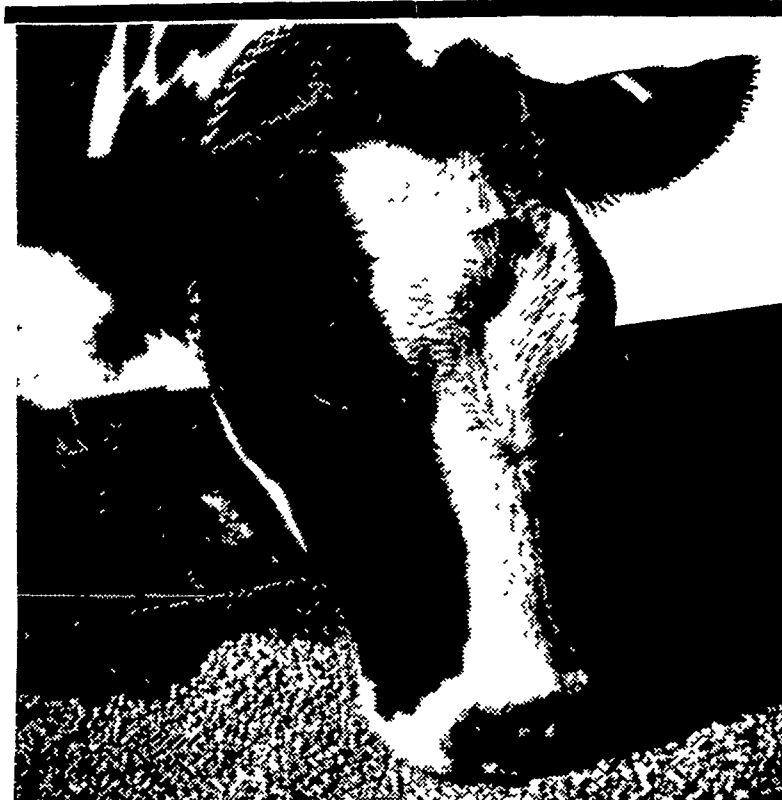
For those staying on until the evening, the Quarter Horses will take over the entire main arena for performance classes. At approximately 8 p.m., the Quarter Horse show will be interrupted for the Ladies Lead Class. In this event, more than a dozen young ladies will show ewe lambs specially trained to be led with a halter. The contestants costume must be like that of their animals, that is, 100 percent wool.

And don't leave the youngsters at home. A special exhibit will be assembled just for them. Known as Barnyard Babies, the young

Care of Stainless Flatware

Stainless steel flatware occasionally stains if you don't wash off certain foods promptly. Salt, fruit and fruit juices, tomatoes, vinegar, and dairy products are the worst offenders. These foods corrode the surface by breaking through the thin, transparent, protective film of chromium and nickel oxides on the steel surface. Oxygen from the air heals minor breaks in the film after the utensil has been cleaned and set aside. If you allow food to remain on the flatware, the air can't reach the break to heal it and corrosion will take place each time the steel becomes wet. Dark marks may respond to treatment with detergent.

offspring of more than a dozen animals found on most farms will be there for the kids to look at, and in a few instances, play with. Family Day at the Keystone International Livestock Exposition, Sunday, November 11, will have something for everyone.



For high efficiency at low cost feed your cows Checkerboard Dairy

You can take advantage of present high milk prices by getting your cows to produce at their bred-in ability—at a low cost. Checkerboard Dairy is the milking ration for the dairyman who wants a highly efficient, yet a low-cost ration for his herd. Checkerboard Dairy has a balance of vitamins, minerals and protein cows need for top performance. And it's a complete milking ration, high in molasses for added palatability and pelleted for easy handling and feeding.

Put your herd on Checkerboard Dairy. See us today—and let Checkerboard Dairy help your cows produce all the milk that's bred into them—and let you take advantage of today's good milk prices.

John J. Hess, II, Inc.
Ph: 442-4632
Paradise.

James High & Sons
Ph: 334-0301
Gordonville

West Willow Farmers Assn., Inc.
Ph: 464-3431
West Willow

Wenger's Feed Mill Inc.
Ph: 367-1195
Rheems

Ira B. Landis
Ph: 665-3248
Box 276, Manheim RD3

John B. Kurtz
Ph: 354-9251
R D. 3, Ephrata



Challenge your present hybrid with an NK Superstar

The Challenge

You know the challenge of getting higher yields can only be met with an open mind and a willingness to try new practices and new hybrids.

Northrup King Superstar hybrids challenge your present hybrid—on yield and overall performance. Plant an NK Superstar. Compare. We think your NK corn will do better. Fair enough?

Corn profits hinge on productive seed! Northrup King has devoted almost a century to the science of unlocking seed productivity. The result is corn hybrids that can meet every challenge—with yields so high they topped the nation for three straight years.

Highest yield in nation three of the last four years

For three consecutive years (1969, 1970 and 1971) NK corn hybrids and growers have produced the highest yield in the nation in a contest sponsored by the National Corn Growers Assn., Boone, Iowa.

Increasing corn yields is a goal that challenges every producer. That's why so many no-nonsense growers are rethinking their hybrid selections—balancing the evidence... and ordering NK hybrids. Think it over.

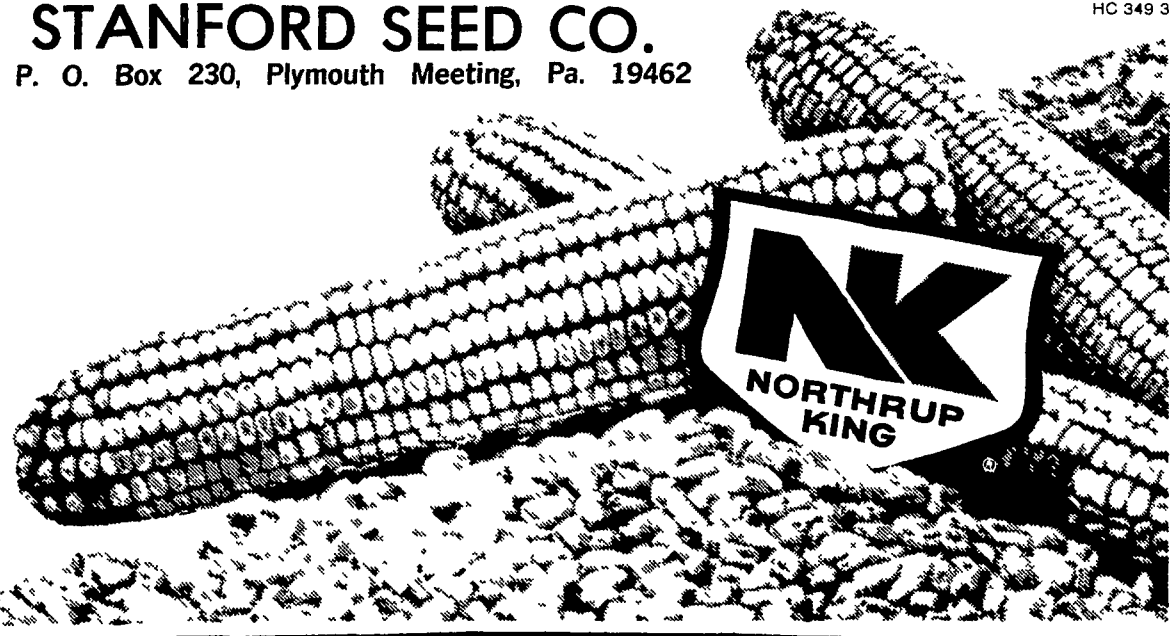


Accept the challenge... order your NK corn

See Your Local NK Dealer OR WRITE

STANFORD SEED CO.

P. O. Box 230, Plymouth Meeting, Pa. 19462



HC 349 3