

# Hog Prices

## Lancaster Market

Monday, Oct. 29

Barrows and gilts 1.00-2.00 lower; sows scarce.

**BARROWS AND GILTS:** US 1 200-240 lb. 44.50-45.00, few 45.50; US 1-2 200-240 lb. 43.50-44.00; US 2-3 195-260 lb. 42.50-43.50, mainly 43.00-43.25.

## Vintage Auction

Saturday, Oct. 27

**HOGS 813:** Compared with last Saturday's market. Barrows & Gilts: Steady to 25 cents lower, spots 75 cents lower. US No. 1-2 205-240 lbs. 45.25-45.75, No. 1-3 200-245 lbs. 44.75-45.25, No. 2-3 205-270 lbs. 42.25-43.75, No. 2-4 120-180 lbs. 38.00-43.00. **SOWS:** US No. 1-3 375-615 lbs. 36.00-39.00. **Boars:** 36.00-39.00.

Wednesday, Oct. 31

**HOGS 700:** Compared with last Wednesday's market. Barrows & Gilts: Mostly 75 cents to \$1 lower. US No. 1-2 200-240 lbs. 44.00-44.50, No. 1-3 200-250 lbs. 43.25-44.00. **SOWS:** US No. 1-3 300-550 lbs. 37.00-39.00. **Boars:** 35.00-36.00.

## Lancaster Auction

Wednesday, Oct. 31

Barrows and gilts mostly steady.

**BARROWS AND GILTS:** US 1 230-240 lb. 45.00-45.25; US 1-2 195-240 lb. 44.00-44.35; US 2-3 200-240 lb. 43.50-44.00; 240-260 lb. 42.60-43.35; US 3-4 265-275 lb. 40.35-42.10.

## New Holland Auction

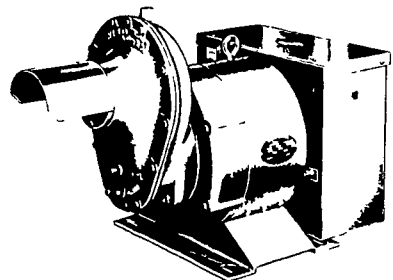
Monday, Oct. 29

**HOGS 1308:** Compared with last Monday's market. Barrows & Gilts: Weak to \$2 lower. US No. 1-2 200-240 lbs. 43.50-44.50, No. 1-3 200-245 lbs. 42.75-43.50, No. 2-3 225-

## U. S. Inspected Livestock Slaughter

Estimated Daily Livestock Slaughter Under Federal Inspection

	CATTLE	HOGS	SHEEP
Week To Date	497,000	1,191,000	156,000
Same Period Last Week	436,000	1,024,000	138,000
Same Period Last Year	494,000	1,377,000	163,000



BUY OR LEASE  
YOUR WINPOWER ALTERNATOR TODAY  
CALL 717 733-7911  
FOR AN APPOINTMENT ON YOUR FARM  
L. J. EDWARDS  
FARM SALES MGR.



**ELECTROMECH**  
ELECTROMECHANICAL SERVICE  
ROUTE 222, EPHRATA, PA. 17522  
PHONE (717) 733-7911

LP-NATURAL GAS  
GASOLINE  
DIESEL  
ENGINE GEN.  
SETS TO  
200,000 WATTS

ELECTRIC MOTOR • GENERATOR • POWER TOOL SPECIALISTS

## New York Dressed Meats

Thursday, November 1

Daily Distributive-Less Than Carlot Meat Trade -

Compared with Wednesday: Steer and heifer beef mostly weak; veal, calf and lamb steady to weak; port loins and other listed pork cuts unchanged.

Relatively poor outlet and prices for beef chucks influencing weakness for carcass beef structure. Veal, calf and pork loins at low time of week and going mostly at low quotations for these. Chain outlets purchasing very light.

### Steer Beef

Prime 600 - 900 pounds 68.50 - 70.00; Choice 600 - 700 68.00 - 69.50; 700 - 800 66.00 - 67.50; 800 - 900 62.00 - 65.00; Good 500 - 800 59.50 - 65.00.

### Heifer Beef

Choice 500 - 700 pounds 66.00 - 68.00.

### Calf (Skin Off)

150-350 pounds  
Choice 110.00 - 112.00; Good 105.00 - 109.00; Standard 100.00 - 102.00.

### Veal (Skin Off)

Choice 90 - 150 pounds 122.00 - 125.00; Good 60 - 90 118.00 - 122.00; Standard 60 - 120 102.00 - 110.00.

### Lamb

Choice and Prime: 30 - 55 pounds 68.00 - 70.00; 55 - 65 66.00 - 69.00.

### Choice Beef Cuts

Hinds (Steers) 145 - 190 pounds 78.00 - 81.00; Arm Chucks 90 - 105 58.00 - 62.00; Ribs (7-Rib) 34 - 40 - 80.00 - 83.00; Loins (Trmd) 50 - 70 98.00 - 103.00; Loins (Trmd) 50 - 70 95.00 - 103.00; Full Plates 41.00 - 42.00; Hinds (heifer) 75.00 - 78.00.

### Fresh Pork Cuts

Loins (Regular) 8 - 14 pounds 80.00 - 82.00; 14 - 17 77.00 - 80.00; Picnics (Regular) 4 - 8 57.00 - 60.00; Boston Butts 4 - 8 65.00 - 69.00; Spareribs 3 pounds down 75.00 - 78.00; Hams (Skinned) 14 - 17 79.00 - 81.00; 17 - 20 77.00 - 80.00.

## Peoria Cattle

Thursday, November 1

Receipts This Week 4600  
Last Week 4300  
Year ago 4800

Compared with last weeks close, slaughter steers 50-1.00 lower. Slaughter heifers mostly 50 lower, Cows 1.00 lower. Bulls scarce steady. Supply mostly Choice 1000 1150 pound slaughter steers.

**SLAUGHTER STEERS:** Couple loads Choice and Prime 1250-1290 pounds 3-4 39.00-40.75; Choice 950-1200 2-4 39.50-42.00 several lots 950-1000 2-3 43.00; load 1350 pounds 3-4 38.00; mixed Good and Choice 900-1200 38.50-40.00; Good 38.00-39.00; load Standard and Good Holsteins 38.00.**SLAUGHTER HEIFERS:** Choice and Prime 950-1050 pounds 3-4 39.50-40.00; Choice 800-1000 2-4 39.00-40.50; load 40.75. Choice 950-1100 3-5 37.00-38.50 mixed Good and Choice 750-1150 38.00-39.00; Good 35.00-38.00.**COWS:** Utility and Commercial 28.00-33.00; high-dressing Utility 34.00 early up to 35.00. Cutter 27.00-31.00; Canner 25.00-27.00.**BULLS:** Yield grade 1-2 1100-1800 pounds 38.00-42.00; few yield grade 1 43.00-44.50.

SELL ★  
YOUR  
BUTCHER  
HOGS  
DIRECT  
Now accepting Hogs on  
Grade and Yield basis.

## Ezra W. Martin Co.

Garden Spot Quality Meats

Call AL SHAFFER At

Lancaster, Pa

717-397-5113

Evenings (215) 779-3847

## Futures Trading

(Closing bids as of Thursday, November 1st)

	Chicago Cattle	Chicago Hogs	New York Maine Potatoes	Chicago Fresh Eggs
November			5.86	59.45
December	43.45	44.50		59.65
January '74				53.45
February	47.40	46.10		49.05
March			6.74	47.00
April	47.95	44.80	7.09	44.20
May			8.05	43.25
June	48.10	45.80		
July		46.00		
August	47.70	44.00		
October	47.10	41.90		

Trend — Cattle are Higher, Hogs are Higher, Potatoes are Higher, and Eggs are Higher.

a-asked     b-bid     n-normal

Markets provided by Commodity Dept., Reynolds Securities, Inc.

## New Holland Horse Auction

Monday, October 29

Reported receipts of 523 head of horses, mules and ponies; market steady with last weeks market.

Load Kansas riding horses, 155 - 320.

Load North Carolina riding horses and work horses; riding horses, 185 - 385; work horses, 310 - 470.

Load Kentucky riding horses, 140 - 235.

Load Virginia riding horses, 205 - 275.

Local work horses, 285 - 360; mules, 115 - 250; driving horses, 140 - 330; riding horses, 140 - 210; better horses, 240 - 440.

Killers: lightweight 8 - 11; heavyweight 15 - 20.

Mare ponies 15 - 30; colts 5 - 8; geldings 10 - 25; larger ponies 40 - 65.

## New Holland Dairy Auction

Dairy Show

Wednesday, October 31

296 Cows Sold

Grand Champion Cow, shown by H. D. Mast, Ephrata, sold to Obie Snider, Imler, Bedford County, for \$8,600. Helderidge Graduate Bonne, a 5-year-old, was sired by UNH Burke Ideal Graduate; dam, Helderidge Sears Bonami.

Reserve Champion — 4-year-old Astronaut daughter, shown by Melvin Kolb and Marvin Eshleman, was purchased by Obie Snider for \$5000.

First place mixed breed, shown by Norman Kolb, sold to Daniel K. King for \$900.

Second place mixed breed, consigned by Kolb and Eshleman, sold to Irvin Rhodes for \$1300.

First place Guernsey, shown by Kolb and Eshleman, was purchased by Charles Myers for \$525.

Second place Guernsey was bought for \$510 by Walter Risser; consigned by Norman Kolb.

### Average Prices

First 10 cows - \$3785  
20 cows - \$2960  
30 cows \$2590  
100 cows - \$1632.

## Ag Weather Report

The Crop Reporting Service discontinued its weekly services the last full week of October. The 1974 weekly crop and weather round-up reporting will begin early next spring.

## Oklahoma City

Thursday, November 1

Estimated Receipts 9,700  
Same Day Last Week 9,311  
Same Day Last Year 6,424

Moderately active, feeder cattle and calves uneven, offerings below average choice 50c to 1.00 lower with some good offerings 2.00 lower; average to high Choice and Prime cattle generally steady, instances; stronger; majority receipts Good to low Choice 350-750 pound steers and 350-650 pound heifers; fairly large attendance buyers.

**FEEDER STEERS:** Choice, few Prime 300-400 pound 62.50-69.50; 400 - 500 59.00-65.75, two short loads 402-436 at 66.80 and 67.80; 500-600 53.25-57.40, part load 515 pound at 65.70; 600-700 50.00-53.50, part load 605 pound at 55.10; 700-800 47.90-52.20; 800-905 46.60-49.20, part load 799 pound at 50.90; mixed Good and Choice 300-500 54.50-60.50; 500-650 47.00-52.50; 740-998 43.75-46.25; Good 350-500 49.75-56.25; Good 640-935 43.00-45.25.**FEEDER HEIFERS:** Choice, few Prime 300-400 pound 49.50-55.00; 400-500 47.25-50.70, two part loads 417-432 55.00-55.40; 500-650 46.25-48.90; mixed Good and Choice 300-500 44.50-49.00; 500-600 44.00-46.25; Good 390-600 40.25-44.50.**FOR THE WEEK:** Feeder cattle and calves uneven compared to late last week, offerings below average Choice 50c to 1.00 lower, some good cattle 2.00 lower; average to high Choice and Prime offerings steady, instances stronger, cows under extreme pressure late and 50c to 1.00 lower; bulls mostly 1.00-1 50 lower, some 2 00 lower Salable receipts near 23,700 head compared to 24,558 last week and 12,444 the comparable period a year ago. Cows 13 percent cattle receipts; feeders 88 percent of total.

## Regional Hay Prices

Monday, October 29, 1973

(All hay No. 2 and better prices paid by dealers at the farm price per ton.)

Hay & Straw steady.	
Alfalfa	50.00-60.00
Mixed Hay	35.00-50.00
Timothy Hay	30.00-45.00
Straw	32.00-40.00
Mulch	12.00-25.00

### Sea Or Lake?

Lake Superior is second in size only to the salty Caspian Sea, which is also a lake by definition — being completely surrounded by land