

Hog Prices

Lancaster Market

Monday, Oct. 22
Market not reported due to Holiday.

Vintage Auction

Saturday, Oct. 20
HOGS 666: Compared with last Saturday's market. Barrows & Gilts: Mostly 50 cents higher. US No. 1-2 200-235 lbs. 45.50-45.85, No. 1-3 200-250 lbs. 44.60-45.50, No. 2-3 245-295 lbs. 39.00-44.50, No. 2-4 170-185 lbs. 40.35-44.00, Sows: US No. 1-3 300-590 lbs. 35.00-38.75. Boars: 36.25-39.75.

Wednesday, Oct. 24

HOGS 600: Compared with last Wednesday's market. Barrows & Gilts: \$1 lower. US No. 1-2 200-235 lbs. 45.00-45.75, No. 1-3 200-250 lbs. 44.00-45.00, No. 2-4 250-290 lbs. 42.00-42.50. Sows: US No. 1-3 300-560 lbs. 36.50-39.50.

Lancaster Auction

Wednesday, Oct. 24
Barrows and gilts 75-1.00 lower. BARROWS AND GILTS: US 1 210-235 lb. 47.00; US 1-2 200-240 lb. 45.25-45.50; US 2-3 200-250 lb. 44.75-45.25; US 3-4 250-260 lb. 44.00-44.75.

New Holland Auction

Monday, Oct. 22
HOGS 1057: Compared with last Monday's market. Barrows & Gilts: Fully \$1 higher. US No. 1-2 200-235 lbs. 45.50-46.50, No. 1-3 200-245 lbs. 44.75-45.50, No. 2-3 230-265 lbs. 43.00-44.75, No. 2-4 140-190 lbs. 42.00-44.75, SOWS: US No. 1-3 300-550 lbs. 37.50-40.00. Boars: 37.50-40.00

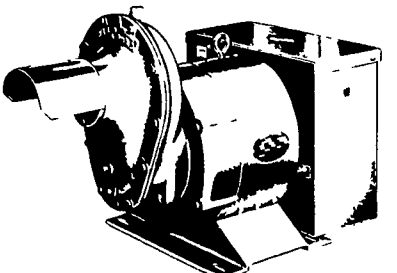
U. S. Inspected Livestock Slaughter

Estimated Daily Livestock Slaughter Under Federal Inspection

	CATTLE	HOGS	SHEEP
Week To Date	416,000	991,000	130,000
Same Period Last Week	473,000	1,143,000	152,000
Same Period Last Year	474,000	1,169,000	143,000



TRACTOR DRIVEN ALTERNATORS



BUY OR LEASE
YOUR WINPOWER ALTERNATOR TODAY
CALL 717 733-7911
FOR AN APPOINTMENT ON YOUR FARM
L. J. EDWARDS
FARM SALES MGR.



ELECTROMECH
ELECTROMECHANICAL SERVICE
ROUTE 222, EPHRATA, PA. 17522
PHONE (717) 733-7911
ELECTRIC MOTOR • GENERATOR • POWER TOOL SPECIALISTS

St. Louis Auction

HOGS: 5500.
Barrows and gilts fully 50 lower.
BARROWS AND GILTS: US 1-2, 80 head 44.25; US 1-3 200-240 lb. 43.50-44.00.

Peoria Auction

HOGS: 3500.
Barrows and gilts opening steady.
BARROWS AND GILTS: US 1-2 200-230 lb. 43.50-44.00; US 1-3 200-250 lb. 43.00-43.50.

Indianapolis Auction

HOGS: 1500.
Barrows and gilts steady to 25 higher.
BARROWS AND GILTS: US 1-2 200-230 lb. 44.00-44.25; US 1-3 200-250 lb. 43.50-44.00.

Lebanon Valley Auction

Tuesday, October 23
300 Hogs
Barrows and Gilts 25 cents to \$1 lower.
U.S. 1-3 190 - 245 pounds 45.00 - 45.75; 2-3 220 - 255 44.50 - 45.25; one lot 2-4 185 pounds 41.35.
Sows: U.S. 1-3 350 - 400 pounds 40.25 - 41.25; few 2-3 350 - 650 38.50 - 40.25.
BOARS: 34.50 - 35.25.
23 Feeder Pigs
U.S. 1-3 35 - 45 pounds 25.00 - 29.50 per head.

Green Dragon Hay

Friday, October 19
13 loads hay, including: Few loads Alfalfa 59.00 - 71.00; few loads Timothy 51.00 - 57.00; few loads Mixed hay 37.50 - 56.00; one load Clover 52.00.
Seven loads straw 40.00 - 44.50.
One load corn 74.00.
One load corn fodder 37.50.

Omaha Cattle

Thursday, October 25
Compared with previous week's close: closing prices on slaughter steers and heifers 50c higher, instances 75c higher. Cows 1.00-1.50 lower. Bulls strong to 1.00 higher. Feeder cattle 50-1.00 higher, supply largely two-way steers.

Four days receipts 18,400 as compared 19,100 previous week and 16,700 a year ago. Slaughter steers approximately 28 percent, heifers 32 percent, cows 8 percent, and feeders 32 percent including those consigned for Friday auction. Moderate price upturn in fed cattle prices influenced by higher carcass trade even in the face of fairly liberal marketings and a non slaughter holiday in some plants on Monday. Canadian buyers fairly aggressive for high-Good and Choice 950-1125 pound steers yield grade 2-3 as well as heifers on yield grade 2-3 mainly 900-950 pounds. Some difficulty still encountered in securing transportation for livestock movement. Overall supply steers and heifers attractive with liberal percentage Choice and many of the steers fell in the preferred 975-1100 pound weight range. Steers over 1250 pounds in relatively small supply but still met with narrow demand.

STEERS: Two loads Choice 1100-1125 pounds grade 2-3 43.00, moderate volume Choice and Prime 975-1125 3-4 42.65-43.00, same grade 1225-1344 3-5 40.00-40.25, load 1429 pounds 4-5 37.50. Choice 950-1125 2-4 41.50-42.50, Choice 1125-1250 mainly yield grade 3-4 40.50-41.50. Mixed Good and Choice 950-1225 40.50-41.75. Good 39.00-40.50. Standard and low-Good 38.00-39.00.

Average cost slaughter steers first three days 41.45 average weight 1104 pounds as compared 41.31 and 1114 pounds previous week and 34.77 and 1142 pounds a year ago.

HEIFERS: Two loads Choice 1031-1047 pounds yield grade 2-3 41.25, moderate volume high-Choice and Prime 827-1074 3-4 40.50-41.00. Choice 825-1050 2-4 39.00-40.50. Mixed Good and Choice 750-1000 38.00-39.25. Good 36.50-38.00. Standard and low-Good 35.00-36.50.

COWS: Utility and Commercial 31.50-33.00, a few 33.25-34.00. Canner and Cutter 29.00-32.00, mixed Cutter and low-Utility 32.25-32.50.

BULLS: Yield grade 1-2 1400-1800 pounds 38.00-42.00, moderate number yield grade 1 43.00-44.00.

FEEDERS: Prices 50-1.00 higher under good demand, supply largely fleshy two-way steers. Outshipments 2,800 from regular market trade as compared 2,000 previous week.

STEERS: Four loads Choice 490 pounds 60.00. Part load mostly Choice 812 pounds 47.50. Choice 844-1075 42.50-43.00. High-Good and Choice 902-1060 41.25-42.25, two loads Good 912-1050 39.25-40.50.

HEIFERS: Two loads Choice 465 pounds 55.00. Few Choice 556-567 53.00. Several loads Good and Choice 460-489 49.50-50.00, two loads same grade 604 pounds 44.50, load 886 pounds 39.50.

Regional Hay Prices

Monday, October 22, 1973
(All hay No. 2 and better prices paid by dealers at the farm price per ton.)
Hay & Straw steady.

Alfalfa	50.00-60.00
Mixed Hay	35.00-50.00
Timothy Hay	30.00-45.00
Straw	32.00-40.00
Mulch	12.00-25.00

Futures Trading

(Closing bids as of Thursday, October 25th)

	Chicago Cattle	Chicago Hogs	New York Maine Potatoes	Chicago Fresh Eggs
November			5.76	56.60
December	43.65	43.65		56.80
January '74				51.00
February	47.15	44.35		47.40
March			6.72	45.40
April	48.10	44.15	7.07	44.50
May			8.04	
June	48.70	46.05		
July		46.00		
August	48.60	44.10		
October	47.90			

Trend — Cattle are Lower, Hogs are Lower, Potatoes are Lower, and Eggs are Higher.
a-asked b-bid n-normal
Markets provided by Commodity Dept., Reynolds Securities, Inc.

Lebanon Valley Auction

Tuesday, October 23
305 Head Cattle
Compared with last weeks market, slaughter cows weak to \$1.75 lower. Slaughter bulls 25 cents to \$2 higher.

STEERS: Choice (few) 43 50 - 45.25; Good (few) 43.10 - 45.25; Standard (few) 40.00 - 42.35.

COWS: Utility and High Dressing Cutter 35.00 - 38.00; Cutters 34.25 - 36.50; Canners 32.00 - 34.60; Shells down to 27.00.

BULLOCKS: Choice (few) 45.35 - 46.85; Good 44.00 - 46.00; Standard 42.75 - 43.85.

BULLS: Yield grade 1-2 900 - 1200 pound slaughter bulls 40.00 - 43.60; 1200 - 2075 45.00 - 47.10.

284 Head Veal Calves
Choice and Prime (few) 70.00 - 72.00; Good 65.00 - 68.00; Utility 90 - 120 pounds 50.00 - 57.00; 70 - 85 43.00 - 48.00.

Farm Calves: Holstein bulls 70 - 85 pounds 50.00 - 60.00; 90 - 135 64.00 - 89.00; Holstein heifers 70 - 85 50.00 - 65.00; 90 - 135 80.00 - 100.00; beef cross bulls and heifers 75 - 110 50.00 - 70.00.

23 Head Sheep
Good and Choice (few) 85 - 100 pound wooled slaughter lambs 33.00 - 34.00; slaughter ewes (few) 12.00 - 15.00.

New Holland Horse Auction

Monday, October 22
Reported receipts of 577 head of horses, mules and ponies; market steady with last weeks market.

Load Ohio riding horses and work horses; riding horses 200 - 255; work horses 265 - 360.

Load North Carolina riding horses and work horses; riding horses, single, 140 - 255; work horses, pairs, 800 - 1100.

Load Virginia riding horses 175 - 285.
Load Kansas riding horses 165 - 340.

Load Virginia riding horses 225 - 325.
Local work horses 250 - 355; mules 125 - 220; driving horses 180 - 350; riding horses 150 - 230, better horses 245 - 960.

Killers - lightweight 8 - 11; heavyweight 15 - 20.
Mare ponies 25 - 40; colts 8 - 12; geldings 20 - 30; larger ponies 50 - 75.

New York Dressed Meats

Thursday, October 25
Daily Distributive - Less than Carlot Meat Trade -

Compared with Wednesday: Prices steady and quotations unchanged for all fresh meats. Wholesale business people trying to hold meat dollars together as poor service margins and decreased weekly turnover creating hardship. Normal supplies clearing slowly with pork loins meeting resistance at current price levels. Beef chucks under pressure but moderately broad inquiry for steak cuts.

Steer Beef
Prime 600 - 900 pounds 67.50 - 69.00; Choice 700 - 800 65.00 - 66.50; 800 - 900 61.00 - 65.00; Good 500 - 800 59.00 - 65.00.

Heifer Beef
Choice 500 - 700 pounds 65.00 - 67.00.

Calf (Skin Off)
150 - 350 Pounds
Choice 110.00 - 112.00; Good 105.00 - 109.00; Standard 100.00 - 102.00.

Veal (Skin Off)
Choice 90 - 150 pounds 122.00 - 125.00; Good 60 - 90 118.00 - 122.00, Standard 60 - 120 102.00 - 110.00.

Lamb
Choice and Prime: 30 - 55 pounds 68.00 - 70.00; 55 - 65 67.00 - 69.00.

Choice Beef Cuts
Hinds (Steer) 145 - 190 pounds 78.00 - 81 00; Arm Chucks 90 - 105 61.00 - 65.00; Ribs (7-Rib) 34 - 40 75.00 - 78.00; Loins (Trmd) 50 - 70 103.00 - 107 00; Rounds (Steer) 70 - 95 80.00 - 42.00; Full Plates 41.00 - 42.00; Hinds (Heifer) 120 - 170 75.00 - 78.00.

Fresh Pork Cuts
Loins (Regular) 8 - 14 pounds 81.00 - 83.00; 14 - 17 79.00 - 82.00; Picnics (Regular) 4 - 8 56.00 - 59.00, Boston Butts 4 - 8 62.00 - 66.00; Spareribs 3 pounds down 75.00 - 78.00; Hams (Skinned) 14 - 17 79.00 - 81 00; 17 - 20 76.00 - 79.00.

TURN ON

WHAT SHOULD I DO IN CASE OF A NUCLEAR WAR?

JUST GO DOWN TO A FINANCE COMPANY AND TAKE OUT A \$25,000 LOAN AND RELAX. THEY'LL MAKE SURE NOTHING HAPPENS TO YOU