

Poultry Market Reports

Egg Market

Wednesday, Oct. 10
Philadelphia Eggs

Prices unchanged. Demand mixed ranging only fair to occasionally good where features involved. Offerings irregularly distributed but adequate overall. Undertone steady.

Prices to retailers: Sales to volume buyers, consumer grades white eggs in cartons, delivered: Store Door A Extra Large 71-72½; A Large 70-71½; A Medium 63½-65

Wednesday, Oct. 10

Baltimore Eggs

Market unsettled. Demand only fair. Supplies plentiful on all

sizes. Cartoned eggs: Prices to retailers, state graded, minimum one case sale A Large 73-80, mostly 73-76; A Medium 69-74, mostly 69-71.

Eastern Pa. and N. J.
Wednesday, Oct. 10

Live Poultry

Prices lower on light type hens. Offerings fully adequate for a pair demand. Slaughter plants operating full time with heavy broilers often being killed. Offerings of heavy type hens fully adequate for a light demand.

Prices paid at farm: Light type hens 15-19½, mostly 19-19½ in Pa., mostly 18-19 in N.J. Heavy type hens TFEWR.

Fogelsville

October 9, 1973

(Prices paid dock weights cents per lb.)

Hens, light type 12-20; Hens, heavy type 16-32, mostly 20-26; Pullets 45-51, mostly 45-48; Roasters 44-50; Ducks 41-56, mostly 44-47; Drakes 41-52, mostly 48-52; Geese 55½; Rabbits 40-61, mostly 50-60; Guineas 80-1.01; Pigeons (per pr.) 80-2.55, mostly 80-1.00;

Total coops sold 421.

Poultry received Monday 7 p.m. to 10:30 p.m. Tuesday 7 a.m. to 12 Noon. Sale at 11:30 a.m.

Directions — Take Rt. 22 thruway. Exit at Fogelsville Exit. North on spotlight in Fogelsville, Turn left, proceed 1 mile.

Oklahoma City

Thursday, October 11

Estimated Receipts 7,000
Same Day Last Week 6,551
Same Day Last Year 14,887

Fairly active, feeder cattle and calves generally steady; majority receipts Good and Choice 350-800 pound steers and 300-650 pound heifers; fairly large attendance buyers; salable receipts curtailed due to overnight rains in the marketing area.

FEEDER STEERS: Two part loads Choice 372-373 pound 68.00; Choice 400-500 61.75-68.25; 500-600 56.50-60.50; 600-700 53.25-57.50, load 599 pound at 60.00; 700-800 52.00-55.00; 800-916 47.25-52.80; mixed Good and Choice 300-500 57.00-66.00; 500-700 50.00-56.75; 700-866 45.00-50.25; Good 300-500 50.25-58.75; 500-615 49.50-52.00; 700-783 45.20-46.75.

HOLSTEIN STEER: Small lot Good 490 pound 51.75; Good 700-842 42.00-44.80.

Weekly New York Egg Market

From Tuesday, Oct. 9th to Friday, Oct. 12th

	Mon.	Tues.	Wed.	Thurs.	Fri.
WHITE					
Fcy. Ex. Large	H	71	71	71	69
Large	O	66	66	66	65
Mediums	L	61½	61½	61½	62½
Pullets	I	47	49	49	51
Peewees	D	36	37	37	39
BROWN	A				
Fcy. Large	Y	68	68	68	
Mediums	Unquoted				
Pullets	Unquoted				
Peewees	Unquoted				
Off Grade Large		60	60	60	59
Checks		45	45	45	45

Long Tone — Small sizes firm, large unsettled.

Copyright 1973 Urner Barry Publications

New England Weekly Shell Egg Report

Tuesday, October 9

Prices paid per dozen Grade "A" brown eggs in cartons delivered to retail stores:

	EX LARGE	LARGE	MEDIUM	SMALL
MASS+	70-80	68-74	67-74	47-53
Mostly	71-74	69-72	68-71	48-51
NEW HAMP.	70-77	68-75	67-74	47-54
Mostly	72-73	70-71	69-70	49-50
R. I.	76-77	72-73	69-70	47-48
Mostly				
VERMONT	82-85	79-83	4-78	TOO FEW
Mostly				
MAINE	76-78	74-76	73-75	53-55
Mostly				

+Includes Central & Western Sections Only.

FEEDER HEIFERS: Choice 300-400 54.75-57.30; 400-500 52.00-56.10; 500-600 48.75-52.80; 600-700 47.75-48.50; mixed Good and Choice 300-500 46.25-53.75; 500-700 44.25-47.75; 700-755 fleshy 41.50-45.50; Good 300-500 44.75-49.75; 500-650 41.50-44.25.

FOR THE WEEK: Feeder steers over 600 pound generally steady compared to late last week; feeder steers under 600 pound, feeder heifers and all calves 1.50-3.00 lower, some calves 5.00 lower. Liberal supply slaughter cows under extreme pressure and 4.00-4.50 lower; slaughter bulls 50 cents to 1.00 lower. Salable receipts near 22,300 head compared to 12,884 last week and 22,608 head the comparable period a year ago. Cows 14 percent cattle receipts; feeders 87 percent of total.



Peoria Cattle

Thursday, October 11
Cattle Receipts This Week: 5100
Last Week: 4100
Year Ago: 4000

Compared with last weeks close, slaughter steers under 1150 pounds 50-1.00 lower, with heavier weights 2.00-3.00 lower, most decline on yield grade 3-5. Slaughter heifers closed mostly 50c lower. Cows 2.00-4.00 lower. Bulls scarce not enough for a comparison. Local receipts largely Choice 950-1100 pound slaughter steers, and Choice 800-900 pounds. Slaughter heifers.

SLAUGHTER STEERS: Three loads Choice and Prime 1275-1310 pounds yield grade 3-5 37.00-39.00; Choice 900-1150 2-4 42.00-43.50; couple loads Choice 900-1000 2-3 44.00; four loads Choice 1300 pounds 3-5 37.00-40.00; mixed Good and Choice 900-1200 41.00-42.50; Good 40.00-41.00.

SLAUGHTER HEIFERS: Choice 800-1000 pounds yield grade 2-4 41.50-42.00; three loads Choice 950-1000 3-5 40.00-41.25; mixed Good and Choice 750-950 pounds 40.50-41.000; good 38.50-41.00.

COWS: Utility and Commercial 30.00-34.00; high-dressing Utility 35.00-35.25; Cutter 28.00-32.00; Canner 25.00-28.00.

BULLS: Few yield grade 1-2 1100-1500 pounds 37.00-41.00.

Lancaster Farming

P.O. Box 266 - Lititz, Pa. 17543
Office: 22 E. Main St., Lititz, Pa. 17543

Record-Express Office Bldg. Phone: Lancaster 717-394-3047 or Lititz 717-626-2191

Richard E. Wanner, Editor
Subscription price: \$2 per year in Lancaster County; \$3 elsewhere

Established November 4, 1955
Published every Saturday by Lancaster Farming, Lititz, Pa.

Second Class Postage paid at Lititz, Pa. 17543

Members of Newspaper Farm Editors Assn., Pa. Newspaper Publishers Association, and National Newspaper Association.



sustain top production with the **BABCOCK B-300**

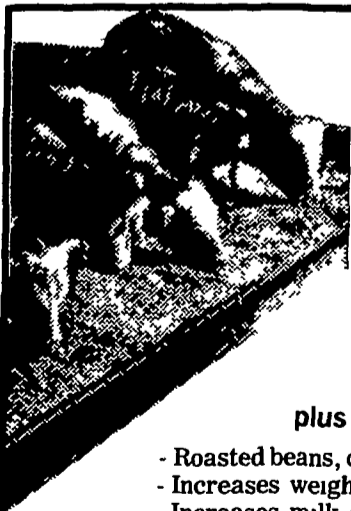
Keeping production up... costs down... is the profit key in poultry operations. And more and more records on commercial flocks of Babcock B-300's... "The Businessman's Bird"... show sustained production of top quality eggs... often with an additional 20 to 30 eggs per bird housed over other strains. Come in... look at the records and the B-300... "The Businessman's Bird".



BABCOCK FARMS, INC.

Telephone (717) 626-8257

Telephone (717) 626-8561



NEW

"ON THE FARM" Roasting

For peak feeding value, have your soybeans, corn and other grains roasted by a

Portable **mix-mill** Rota-pulse grain roaster

plus these additional benefits.

- Roasted beans, corn and other grains have higher feeding value.
- Increases weight gain for beef and hogs.
- Increases milk and egg production.
- Eliminates hauling to mill and back again to farm.
- Feed your own grown beans and grain (not exchanged with others).
- Roasted beans and grain is cooled, ready for storage.
- Roasted beans and grain can be stored for months without losing any feeding value.

For More Information Contact

DALE L. SCHNUPP

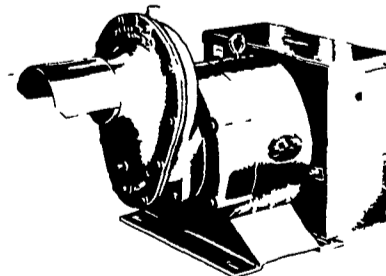
R.D.2, Lebanon, Pa. 17042

Phone 717-865-2534

AVAILABLE THIS FALL



TRACTOR DRIVEN ALTERNATORS



BUY OR LEASE

YOUR WINPOWER ALTERNATOR TODAY

CALL 717 733-7911

FOR AN APPOINTMENT ON YOUR FARM

L. J. EDWARDS

FARM SALES MGR.



ELECTROMECH

ELECTROMECHANICAL SERVICE

ROUTE 222, EPHRATA, PA. 17522

PHONE (717) 733-7911

LP-NATURAL GAS
GASOLINE
DIESEL
ENGINE GEN.
SETS TO
200,000 WATTS

ELECTRIC MOTOR • GENERATOR • POWER TOOL SPECIALISTS