



SPECIAL SALE

FRIDAY, OCTOBER 26
7:30 P.M.

All Weights Steers, Calves, and Cows.

Charolais, Angus and Hereford calves and yearling steers and heifers. No paint marks or hip tags on any of these cattle. All cattle weighed on sale day.

Beef breeds and some holstein steers—Sorted in uniform lots

For further information, contact:
J. FRANCIS TINSMAN

LEESBURG LIVESTOCK MARKET

Leesburg, Virginia

Phone 777-1411

Phone 777-3521

Regular Sale Day every Monday 2:00 P.M.

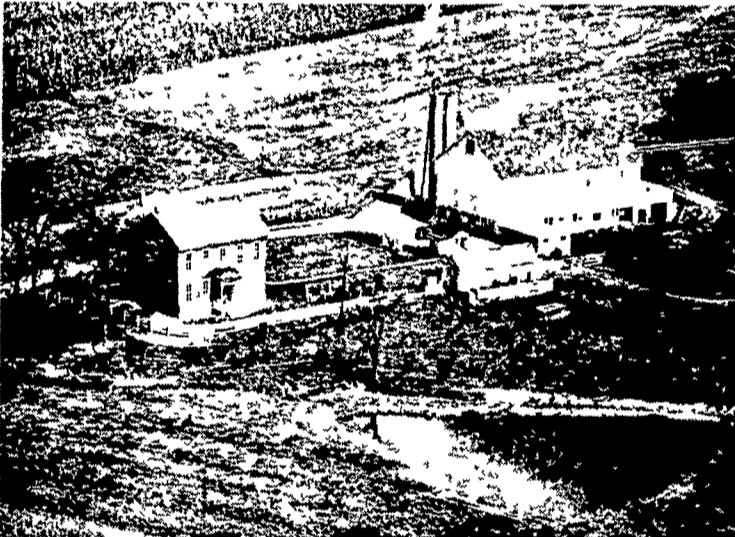
Plan now to attend this sale, as quality pays in many ways

PUBLIC AUCTION

OF VALUABLE 122-ACRE FARM
WEDNESDAY, OCTOBER 17, 1973

AT 2:00 P.M.

Location: Approximately two miles northwest of Myers-town, one mile north of Route 422 and directly north of the Lebanon Valley Air Park. Also between Reading and Lebanon, just north of Route 422, Jackson Township, Lebanon County, Pennsylvania:



122-ACRE FARM

95 ACRES TILLABLE — 20 ACRES PASTURE
Balance Woodland and Orchard; Three Streams
Pond, Spring

LARGE TEN-ROOM BRICK HOUSE

Containing five rooms on first floor including kitchen with large fireplace and built-in dry sink. Second floor contains five bedrooms, some with built-in closets and one full bath. Third floor attic. Also TWO-STORY FRAME SUMMER HOUSE with fireplace. Full basement under house and summer house. Myers Pressure System; Cistern, hand-dug well, water heater.

LARGE FRAME BANK BARN

WITH 32 STANCHIONS

Two Drive Floors and Two Mows; also Scaffolding in Barn. 45x20 2-STORY EXTENSION attached to barn with Heifer Pens on ground floor and Storage on second floor. 19x17 BLOCK MILKHOUSE attached to barn. STARLINE BARN CLEANER, 4 years old.

20x60 CORN BARN

16x24 PIG STABLE — 10x50 CONCRETE SILO
APPLE AND PEAR ORCHARD

North End of this Farm borders on a large Dam known as "Strack's Dam".

This Property is zoned Agriculture or Class A, permitted uses include single family dwellings. Conditions of sale 10% down day of sale, settlement on or before April 1, 1974.

Sale time, 2 00 P M Sale by order of

MARK W. BURKHOLDER

Executor of the Raymond M. Burkholder Estate
Myerstown R.D.2, Pa. - 717-866-5273

Henry Steiner, Attorney

JOHN E. AND PAUL E. MARTIN

Auctioneers

717-733-3511 or 733-3305

Public Sales Register

(Continued From Page 48)

WED. OCT. 10 - 7:30 P.M. Special Feeder Cattle Sale of Steer and Heifer Calves only at Terra Alta Stockyards, Inc., Terra Alta, West Virginia.

WED. OCT. 10 - 2 P.M. Complete Nichols Acres View Farm Dispersal at New Holland Sales Stables, Inc., New Holland, Pa. 76 Head Holsteins. Consigned by Fite Bros.

THURS. OCT. 11 - 11 A.M. Louis & Anna Pektor & Sons Dispersal (All over 6 mos. selling) at the farm 5 miles east of Hellertown on Easton Rd. 5 miles west from Raubsville, Pa. 12 miles from Allentown, 9 miles from Easton and just south of Bethlehem, Pa. Louis & Anna Pektor & Sons, owners, Hellertown, RD1, Pa.; R. Austin Backus Inc., Sale Mgrs. & Auctioneers, Mexico, N. Y. and Penna. Hol. Assoc., 839 Benner Pike, State College, Pa.

FRI. OCT. 12 - 8 P.M. Public Sale of 80 Holstein Dairy Cattle to be held at the Aberdeen Sales Co., Inc. in the dairy barn arena located on Md. Rt. 22, Churchville, Harford Co., Md., 6 mi. east of Bel Air, Md. or 6 mil. west of Aberdeen, Md. From Cecil Co. take Rt. 1 to Poplar Grove; turn left on Md. Rt. 136 to Churchville intersection. At traffic light; go east ¼ mile. Sale by Aberdeen Sales Co., Inc., P. O. Box C, Aberdeen, Md. 21001.

FRI. OCT. 12 - 12:00 Public Sale of 62 Head Registered and Grade Holstein Dairy Cattle located 2 miles south of Elverson off Rte. 82. Sale by Jacob S. Stoltzfus; J. Everett Kreider and Carl Diller, Auctioneers.

SAT. OCT. 13 - 11:00 a.m. Public Sale of Fine Household Goods, some Antiques, Boat, Trailer, Shotgun . . . Sale by Edgar W. Montell, London Bridge Farm at Millington, Md. H. Rudnick & Sons, Auctioneers

DRAFT HORSES AND MULES

This is the largest selection of draft horses and mules to be found anywhere.

If you are looking for horses or mules with quality and size we have them.

PAUL S.

WALTERMYER

Jonestown RD1, Pa. 17038
Phone 717-865-2234

SAT. OCT. 13 - 9 A.M. Public Auction of valuable antiques which have been in the family for generations of the late Erma B. Myers on the premises on Ridge Avenue near Main Street in the Borough of Delta, York Co., Pa. Charles W. Shrodes and David W. Shrodes, Auctioneers.

SAT. OCT. 13 - 10:30 A.M. Blue Ridge Ranch Registered Hereford Auction located 2 miles from Rte. 11 at New Milford, Pa. (Exit 67 from Interstate 81) or leave Rte. 29 North of Montrose, Susquehanna County. Jim Adriance, Auctioneer, Montrose, Pa.

SAT. OCT. 13 - 1:30 Public Sale of 200-250 Feeder Pigs located 1 mile south of Richland; 3 miles south of Myerstown on 501, turn east at Country House Restaurant, follow sale signs. Sale by Paul M. Zimmerman, Myerstown RD2; John E. and Paul E. Martin, Auctioneers.

SAT. OCT. 13 - 10 A.M. Public Sale of Real Estate, Antiques, Coins, and Household Goods located 12 & 14 Bridge St. in the Boro of Christiana, Bart Twp. Sale by the order of Betty Maye

(Continued On Page 58)

TWO DAY PUBLIC SALE

FULL LINE OF MODERN FARM MACHINERY 100 DAIRY CATTLE

7 miles East of Hughesville, 1 mile East of Lairdsville, Pa. just off Route 118.

100 HIGH GRADE DAIRY CATTLE
DAIRY EQUIPMENT; PRODUCE AND ENSILAGE

Tuesday, October 9 Starting 11 A.M.

Wednesday, October 10 Starting 10 A.M.

FULL LINE OF MODERN MACHINERY

Cattle Include: 55 milking age, 50 holstein and 5 colored cows; including 10 Kingpin and 6 Gent daus; year round freshening, lot of first and second calf heifers; 15 holstein ABS bred heifers due to calf throughout fall and early winter; 21 ABS heifers from 3 months to one year old; this herd has a lot of 80 lb. cows; 30 day TB and bangs tested; good Bow-Matic 4 unit pipe line milkers, dairy cool ice bank 650 gal. bulk tank; 8,000-9,000 bales of mixed clover and timothy hay; wheat and oats straw.

Following Items Selling on Wednesday:

1971 Case 870-B with cab, air conditioning, fully loaded, WFE and only 935 hrs.; 1970 Case 970 WFE fully loaded, with only 1300 hrs., JD 620 G Tractor, 3 point hitch, power steering, good rubber; Gehl Hyda Cat 2500 loader, only 214 hrs.; Case 5-16" semi mount plow with automatic reset; Oliver No. 575 4-16" reset plow; MS 410 diesel 12' self propelled combine; NH 276 baler with No 58 PTO thrower; NH 510 PTO Spreader; NH 469 haybine; NH 36 flail chopper; JD 495 4-row corn planter; JD 3.12' roller harrow; Ontario 15-8 hoe drill; NH 717 4H harvester with corn head and windrow; NH 56 rake; NI 38' PTO elevator; Ford 1963 No 350 cattle truck; 1972 No. 640 TNT skrimobile; dual wheel dump trailer. Many other items selling

Auctioneers: Fraley, Diller & Kreider

This is a complete sell out. Plan to attend this good sale!

Owner:

Mary E. Phillips

Phone 584-3184

THE NEW OWNERSHIP OF

LANCASTER STOCKYARDS INC.

WILL CONTINUE THE POLICY OF A

STOCKER AND FEEDER AUCTION SALE

EVERY FRIDAY DURING OCTOBER

NEXT SALE OCTOBER 12, 1973

SALE STARTS AT 1:00 P.M.

All Grades, Breeds, Weights

Load Lots — Small Lots

Lancaster Stockyards, Inc.

LANCASTER, PA.

PH. 717-394-2611

MEMBER DEALERS

WALTER M DUNLAP & SONS
J. M HOOBER & SON
LOUIS LYONS & SON

JOHNSON CATTLE CO
MERTON W McCOY
WM. W. McCOY

T G KREIDER
EDW L BROWN
S. L. HEILBRON & SONS