

# Poultry Market Reports

## Fogelsville

October 2, 1973  
(Prices paid dock weights cents per lb.)  
Hens light type 12-20; Hens heavy type 16-31, mostly 20-26; Pullets 26-47, mostly 40-46; Roasters 20½-45, mostly 40-45; Drakes 45-50; Rabbits 40-90, mostly 60-75; Pigeons (per pr.) 50-2.50, mostly 1.05-1.10.  
Total coops sold 288.  
Poultry received Monday 7 p.m. to 10:30 p.m. Tuesday 7 a.m. to 12 Noon. Sale at 11:30 a.m.  
Directions — Take Rt. 22 thruway. Exit at Fogelsville Exit. North on stoplight in Fogelsville, Turn left, proceed 1 mile.

## Eastern Pa. and N. J.

Wednesday, Oct. 3  
Live Poultry  
Prices on light type hens unchanged to lower. Offerings ample for fair demand. On turkeys, moderate sales volume developed on 25 lb. average weight young toms at 50 cents.  
Prices paid at Farm: Light type hens 16-21½, mostly 19-21¼ in Pa., Mostly 19-21 in N. J.

## Peoria Cattle

Thursday, October 4  
Receipts This Week 3900  
Last Week 4000  
Last Year 3700  
Compared with last weeks close slaughter steers 4.00-5.00 higher. Slaughter heifers 3.50-4.50 higher. Cows 3.00-4.00 higher. Bulls 1.00-2.00 higher. Supply about 60 percent slaughter steers 20 percent slaughter heifers, balance mostly cows  
SLAUGHTER STEERS: Choice 900 pounds yield grade 2-4 43.00-44.50, couple loads Monday 1000-1150 2-3 45.00, few 45.50; Choice 1150-1250 3-4 42.00-43.00, load Choice and Prime 1332 pounds 4-5 38.00; several loads high-Choice 1995-1398 3-5 40.00-42.25, mixed Good and Choice 900-1200 42.00-43.00; Good 40.00-42.00; several Standard and Good Holsteins Monday 38.75 to mostly 40.00  
SLAUGHTER HEIFERS: Choice 800-1000 pounds yield grade 2-4 42.00-43.00, closing 42.00-42.50, mixed Good and Choice 750-1000 41.00-42.00; Good 38.50-41.00.  
COWS: Utility and Commercial 34.00-36.50, high-dressing Utility 37.00; Cutter 31.00-34.00; Canner 28.00-31.00.  
BULLS: Yield grade 1-2 1100-1800 pounds 37.00-43.00; couple yield grade 1 44.00-44.50.

## Lebanon Valley Auction

Tuesday, October 2  
228 Head Cattle  
Compared with last weeks market, slaughter cows \$3 to \$4.50 higher  
STEERS: Choice (few) 45.50 - 46.85, Good 44.00 - 46.00, Standard 39.50 - 43.00.  
HEIFERS: Choice (few) 43.00 - 44.25, Standard (few) 40.25 - 41.50, Utility (few) 39.00 - 40.50.  
COWS: Utility and High Dressing Cutter 37.75 - 39.35, individual at 40.00, Cutters 35.25 - 37.60, Canners 33.00 - 35.00, Shells down to 29.75  
BULLOCKS Good (few) 43.50 - 46.60, Standard (few) 41.85 - 43.25 yield grade 1-2 1200 - 1550 pounds 42.85 - 45.85  
303 Head Veal Calves  
Prime (few) 71.50 - 74.50, Choice 69.00 - 71.00 Good 65.00 - 70.00 Utility 90 - 120 pounds 53.00 - 59.00 70 - 85 45.00 - 50.00

## Egg Market

Wednesday, Oct. 3  
Philadelphia Eggs  
Market unsettled on large, steady on medium. Demand good on medium and supplies are light. Interest fair on large for ample stocks. Prices to retailers: Sales to volume buyers, consumer grades white Eggs in cartons, delivered: store door A Extra Large 71-72½; A Large 70-71½; A Medium 64-65½.

Wednesday, Oct. 3  
Baltimore Eggs  
Market about steady with only large occasionally 1 cent lower. Movement of mediums on feature good. Demand in other outlets irregular but generally fair.  
Cartoned eggs: Prices to retailers, state graded (min one case sale) white Grade A Large 74-80, mostly 74-77; Grade A Medium 69-74, Mostly 69-71.

## Delmarva

Wednesday, Oct. 3  
Broiler-Fryer Market  
Ready to cook demand irregularly good for immediate shipment, only fair for next week. Live supplies generally ample.  
Pool trucklot prices for Thursday arrival US Grade A 43-47, mostly 44; Plant Grade 43-45, mostly 43-44.

Farm Calves: Holstein Bulls 70 - 85 pounds 44.00 - 59.00; 90 - 125 53.00 - 68.00; Holstein Heifers (few) 70 - 85 pounds 49.00 - 65.00; 90 - 145 73.00 - 94.00.  
13 Head of Sheep  
One lot Choice 100 pound woolled slaughter lambs 33.00; Good (few) 85 - 95 30.50 - 31.50.



sustain top production with the **BABCOCK B-300**

Keeping production up...costs down...is the profit key in poultry operations. And more and more records on commercial flocks of Babcock B-300's... "The Businessman's Bird"... show sustained production of top quality eggs... often with an additional 20 to 30 eggs per bird housed over other strains. Come in... look at the records and the B-300... "The Businessman's Bird".



**BABCOCK FARMS, INC.**

Telephone (717) 626-8257  
Telephone (717) 626-8561

## Weekly New York Egg Market

	From Monday, Oct. 1st to Friday, Oct. 5th				
	Mon.	Tues.	Wed.	Thurs.	Fri.
<b>WHITE</b>					
Fcy. Ex. Large	72	71	71	71	71
Large	67	66	66	66	66
Mediums	61	61	61	61½	61½
Pullets	46	46	46	47	47
Peeweese	35	35	35	36	36
<b>BROWN</b>					
Fcy. Large	68	68	68	68	68
Mediums	Unquoted				
Pullets	Unquoted				
Peeweese	Unquoted				
Off Grade Large	61	60	60	60	60
Checks	47	47	46	46	46

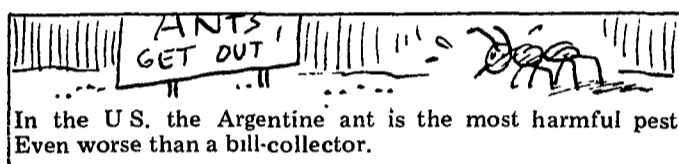
Long Tone — Large irregular, balance steady to firm.  
Copyright 1973 Urner Barry Publications

## New England Weekly Shell Egg Report

Tuesday, October 2  
Prices paid per dozen Grade "A" brown eggs in cartons delivered to retail stores:

	EX LARGE	LARGE	MEDIUM	SMALL
MASS+	72-80	68-75	65-73	42-49
Mostly	73-76	69-72	66-69	43-46
NEW HAMP	72-79	68-75	65-72	42-49
Mostly	74-75	70-71	67-68	44-45
R. I.	76-77	72-73	69-70	46-47
Mostly				
VERMONT	82-85	79-83	74-78	TOO FEW
Mostly				
MAINE	78-80	74-76	71-73	48-50
Mostly				

+Includes Central & Western Sections Only.



In the U.S. the Argentine ant is the most harmful pest. Even worse than a bill-collector.

Even a neat smoker misses occasionally. If you should get match streaks on your clothes, rub them out with half a lemon. But test the fabric first to make sure it won't bleach.

Here's a method of removing mercurochrome stains. To remove stains from washable fabrics, soak them overnight in a solution of four tablespoons of ammonia to a quart of water. Sponge articles requiring dry cleaning with alcohol until the stain disappears. You can also use alcohol on acetate. But it should be diluted with two parts water to one part alcohol. For stubborn stains, leave an alcohol saturated cotton pad on the spot and keep it wet until the stain vanishes. When you use alcohol, always test your fabrics first to see if they are colorfast.

## TRY A CLASSIFIED AD

### Lancaster Farming

P.O. Box 266 - Lititz, Pa. 17543  
Office: 22 E. Main St., Lititz, Pa. 17543  
Record-Express Office Bldg. Phone: Lancaster 717-394-3047 or Lititz 717-626-2191  
Richard E. Wanner, Editor  
Subscription price: \$2 per year in Lancaster County; \$3 elsewhere

Established November 4, 1955  
Published every Saturday by Lancaster Farming, Lititz, Pa.  
Second Class Postage paid at Lititz, Pa. 17543  
Members of Newspaper Farm Editors Assn., Pa. Newspaper Publishers Association, and National Newspaper Association

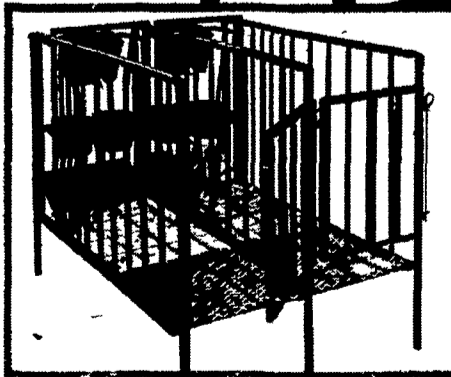
**STARCRAFT**

## CALF STALL

It's built to outlast and outperform any other stall... at a cost that's easy to live with!



2 STARCRAFT Model CS-10 Calf Stalls plus 1 CS-10P Calf Stall end panel



Rear view of Calf Stalls

When you see the quality and the convenience features we've engineered and built into the new STARCRAFT Calf Stall... along with its economical cost we believe you'll see why STARCRAFT is the leader in livestock equipment

STARCRAFT Calf Stalls are made of prime quality structural steel tubing and tough angle iron. Flooring is of PVC plastic coated expanded metal and treated wood for strength, long life and calf comfort. And, not only is the flooring included with every STARCRAFT stall, but each stall is complete right down to the hay rack, feed buckets and nurser

Order your STARCRAFT Calf Stalls today and give every one of your valuable calves a 100% chance to develop to its full potential

Model	Code No	Overall Height	Height from Floor	Overall Length	Width	Weight
CS-10	12 2022	46"	12"	61"	20"	100 lbs
CS-10P	12 2023	46"	12"	61"	—	40 lbs

1 CS-10P End Panel required for each group of stalls

WE SELL, SERVICE AND INSTALL

**E. M. HERR EQUIPMENT, INC.**

R. D. 1, Willow Street

717-464-3321