

# Congeniality

(Continued From Page 1)

and Mrs. Charles F. Her-  
shberger.

All of the contestants previously were acclaimed Dairy Princesses in local contests. Two represent two-county areas, a third is from the Penn State Dairy Science Club and the other 30 have county titles. All are daughters of dairy farm families.

Not only was the 33 contestants a record number for a Pennsylvania Dairy Princess contest, seven more than previous high set just last year, but a record number also entered at the local level, 236.

Presiding at the coronation ceremony was the 1972 Dairy Princess Rose M. Winkelbauer, a sophomore at Edinboro State College in her native Erie County.

# Poultry Market Reports

## Fogelsville

September 25, 1973

(Prices paid dock weights cents per lb.)

Hens, light type 12-22; Hens, heavy type 16-32, mostly 20-27; Pullets 25-49, mostly 44-47; Roasters 20-47, mostly 42-45; Ducks 46-49; Drakes 45-50; Rabbits 42-75, mostly 55-65; Pigeons (per pr.) 70-2.05, mostly 1.00-1.05.

Total coops sold 448.

Poultry received Monday 7 p.m. to 10:30 p.m. Tuesday 7 a.m. to 12 Noon. Sale at 11:30 a.m.

Directions — Take Rt. 22 thruway. Exit at Fogelsville Exit. North on stoplight in Fogelsville. Turn left, proceed 1 mile.

## Delmarva

Wednesday, Sept. 26  
Broiler-Fryer Market

Ready to cook demand fairly good. Offerings no more than adequate with only an occasional plant not fully booked for the balance of this week. Prices trended higher in most quarters. Live supplies ample and rate of growth is advancing under ideal weather conditions.

Pool trucklot prices for Thursday arrival US Grade A 40-45, mostly 40½-41; Plant Grade 39½-43, mostly 40.

## Omaha Cattle

Thursday, September 27

Compared with last week's close: closing prices on slaughter steers 3.00-4.00 lower with maximum decline on yield grade 4-5 1200-1350 pound. Heifers 2.00-3.00 lower. Cows steady after early decline recovered. Bulls 1.00-2.00 lower. Scattered feeder sales 2.00-3.00 lower with trade poorly tested.

Four day receipts 11,200 as compared 19,900 previous week and 15,600 a year ago. For sixth successive week, prices on slaughter steers and heifers pointed downward as one of the most severe declines in history of cattle industry continued with current prices 14.00-18.00 below August peak. Most of current downturn on opening session when more than 60 percent of four day total counted in and prices at wholesale level plunged downward. Weight and yield grade major price determining factors with yield grade 2-3 Holstein steers often selling well above high-Choice 1300-1350 pound yield grade 4-5. Price differentials in carcass trade ranged up to 15.00 between various weight and yield grade carcasses.

**STEERS:** Load high-Choice and Prime 1148 pounds Grade 3 40.50, moderate volume 1000-1278 3-4 39.50-40.00. Choice 975-1300 2-4 38.00-39.50, some yield grade 2-3 1000-1050 39.75-40.00, and several loads high-Choice 1325-1350 4-5 34.50-35.00. Mixed Good and Choice 950-1250 37.25-38.25. Good 36.00-37.50, yield grade 2-3 Holsteins 36.00-36.50.

Average cost slaughter steers first three days 38.33 average weight 1117 pounds as compared 44.86 and 1143 pounds previous week and 34.94 and 1123 pounds a year ago.

**HEIFERS:** Four loads high-Choice and Prime 980-1015 pounds 3-4 39.50-39.75, others same grade 884-1062 38.50-39.00, load 1115 pounds 4-5 36.00. Choice 850-1075 2-4 closed 37.50-39.00. Mixed Good and Choice 800-1000 36.00-37.50 Good 34.50-36.00. Standard and low-Good 33.50-34.50

## Egg Market

Wednesday, Sept. 26  
Philadelphia Eggs

Prices unchanged. Demand good for mediums, fair to good for large and only fair on smalls. Some feature activity building for next week. Offerings and supplies ample on large and smalls, adequate on mediums.

Prices to retailers: Sales to volume buyers, consumer grades white eggs in cartons, delivered: store door A Extra Large 72-73½, A Large 71-72½, A Medium 64-65½.

Wednesday, Sept. 26  
Baltimore Eggs

Prices unchanged to 1 cent lower. Demand fair. Supplies of large ample and mediums adequate. Cartoned eggs: Prices to retailers, state graded (min one case sale) White Grade A Large 75-82, mostly 75-78; Grade A Medium 69-75, mostly 69-71.

## Eastern Pa. and N. J.

Wednesday, Sept. 26  
Live Poultry

Undertone weak and prices are lower on new bookings. Offerings fully adequate. Much price resistance has developed on further processed items.

Prices paid at farm: Light type hens 18-29, mostly 21-21¼ in Pa., Mostly 21-23 in N. J. Heavy type hens TFEWR.

## New Holland Horse Auction

Monday, September 24

Reported receipts of 495 head of horses, mules and ponies; market steady with last weeks market.

Load New York riding horses 175 - 235.

Load Illinois riding horses and driving horses; riding horses 160 - 375; driving horses 195 - 440.

Load Kansas riding horses 140 - 315.

Load North Carolina riding horses 195 - 345.

Local work horses 185 - 400; mules 125 - 170; driving horses 160 - 600; riding horses 135 - 225; better horses 255 - 295.

Killers: Lightweight 8 - 11; heavyweight 15 - 20.

Mare ponies 10 - 30; colts 3 - 8; geldings 10 - 20; larger ponies 40 - 70.

**COWS:** Utility and Commercial 30.00-32.00, few 32.25-32.50. Canner and Cutter 26.50-30.00, mixed Cutter and low-Utility 30.25-31.00.

**BULLS:** Yield grade 1-2 1300-2100 pounds 34.00-38.00, few yield grade 1 39.00-40.00 early. Few Good and Choice 1100-1300 bullocks 37.00-39.00.

**FEEDERS:** Limited sales 2.00-3.00 lower in sympathy with sharp downward trend on slaughter cattle but supply hardly sufficient for good market test. Outshipments 1000 head compared 1600 previous week.

**STEERS:** Approximately eight loads Choice 599-644 pounds 51.50-52.50. Four loads Choice 966 pounds fleshy steers 39.50, part loads Choice 1010-1063 38.50, most high-Good and Choice 950-1050 fleshy 37.50-38.00.

**HEIFERS:** Part load Choice 286 pounds 50.00, three loads Choice 510-528 47.00-48.25.

## Weekly New York Egg Market

From Monday, Sept. 24th to Friday, Sept. 28th

	Mon.	Tues.	Wed.	Thurs.	Fri.
<b>WHITE</b>					
Fcy. Ex. Large	73	72	72	72	72
Large	69	67	67	67	67
Mediums	62	61	61	61	61
Pullets	46	46	46	46	46
Peeweese	35	35	35	35	35
<b>BROWN</b>					
Fcy. Large	72	70	68	68	68
Mediums	Unquoted				
Pullets	Unquoted				
Peeweese	Unquoted				
Off Grade Large	62	61	61	61	61
Checks	49	49	47	47	47
Long Tone — Still irregular.					

Copyright 1973 Urner Barry Publications

## New England Weekly Shell Egg Report

Tuesday, September 25

Prices paid per dozen Grade "A" brown eggs in cartons delivered to retail stores:

	EX LARGE	LARGE	MEDIUM	SMALL
MASS+	72-83	68-79	65-71	42-49
Mostly	74-77	70-73	67-70	44-47
NEW HAMP	71-83	67-79	64-71	41-49
Mostly	74-75	70-71	67-68	44-45
R. I.	78-79	74-75	69-70	46-47
Mostly				TOO FEW TO REPORT
VERMONT	85-88	81-84	75-80	48-50
MAINE	78-80	74-76	71-73	
Mostly				

+ Includes Central & Western Sections Only.

## Special Feeder Sales

Ewing, VA  
Tuesday, September 25

430 Head Sold  
Steers

Choice and Fancy: 300 - 400 pounds 60.25; 405 - 500 51.00-51.25; 505 - 600 44.50 - 47.00.

Good: 300 - 400 pounds 55.00 - 60.50; 405 - 500 50.50 - 58.75; 505 - 600 43.00 - 46.00.

Medium: 505 - 600 pounds 43.00 - 46.00; 405 - 500 42.00 - 48.50; 505 - 600 42.00.

Heifers

Choice and Fancy: 300 - 400 pounds 42.00 - 44.00; 405 - 500 44.00 - 45.00; 505 - 600 38.00 - 40.50.

Good: 300 - 400 pounds 40.25 - 42.00; 505 - 600 37.25 - 40.00.

Medium: 300 - 400 pounds 42.00; 405 - 500 38.50 - 43.25.

Abingdon, VA  
Tuesday, September 25

426 Head Sold  
Steers

Choice and Fancy: 300 - 400 pounds 56.00 - 57.50; 405 - 500 56.50 - 57.50; 505 - 600 50.25 - 52.00.

Good: 405 - 500 pounds 56.00 - 56.25; 505 - 600 51.00.

Medium: 405 - 500 pounds 55.00 - 55.25; 505 - 600 46.25 - 48.50.

Heifers

Choice and Fancy: 300 - 400 pounds 45.50 - 47.25; 405 - 500 45.50 - 47.75; 505 - 600 45.00 - 46.50.

Good: 300 - 400 pounds 44.75 - 45.00; 405 - 500 43.00 - 47.75; 505 - 600 43.75 - 46.00.

Medium: 300 - 400 pounds 43.50; 405 - 500 41.00 - 42.75; 505 - 600 41.25.

Orange, VA  
Tuesday, September 25

778 Head Sold  
Steers

Choice and Fancy: 300 - 400 pounds 65.50 - 66.00; 405 - 500 58.50 - 67.00; 505 - 600 54.75 - 59.75.

I've Heard Everything Now!

That new house I bought has six rooms and 1 and ¾ bathrooms That fractional bathroom is really something else. It has a sink, a bowl, a tub — but no pipes! And the furnishings! Wall-to-wall carpeting, air-conditioning and 'ack-to-the-wall payments'

## My Neighbors



"Stall him a minute, Hon — I'll go fetch a rope."

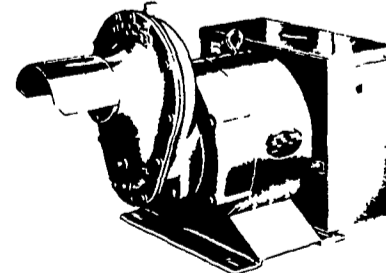
## Lancaster Farming

P.O. Box 266 - Lititz, Pa. 17543  
Office: 22 E. Main St., Lititz, Pa. 17543  
Record-Express Office Bldg.  
Phone: Lancaster 717-394-3047 or Lititz 717-626-2191  
Richard E. Wanner, Editor  
Subscription price: \$2 per year in Lancaster County; \$3 elsewhere

Established November 4, 1955  
Published every Saturday by Lancaster Farming, Lititz, Pa.  
Second Class Postage paid at Lititz, Pa. 17543  
Members of Newspaper Farm Editors Assn., Pa. Newspaper Publishers Association, and National Newspaper Association.



TRACTOR DRIVEN ALTERNATORS



WORLD'S LARGEST MFG. OF TRACTOR-DRIVEN ALTERNATORS with 45 years continuous experience to give you the best quality unit for long years of service, and to protect your family against huge losses due to power outages, and brown outs.

BUY OR LEASE  
YOUR WINPOWER ALTERNATOR TODAY  
CALL 717 733-7911  
FOR AN APPOINTMENT ON YOUR FARM  
L. J. EDWARDS  
FARM SALES MGR.



ELECTROMECHANICAL SERVICE  
ROUTE 222, EPHRATA, PA. 17522  
PHONE (717) 733-7911

LP-NATURAL GAS  
GASOLINE  
DIESEL  
ENGINE GEN.  
SETS TO  
200,000 WATTS

ELECTRIC MOTOR • GENERATOR • POWER TOOL SPECIALISTS