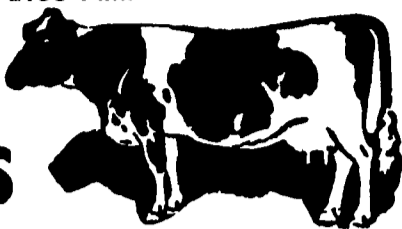


2 HERD DISPERSAL

at New Holland Sales Stables, Inc.
WEDNESDAY, SEPT. 19, 1973

1:00 P.M.

60 HEAD HOLSTEINS



1 VIRGINIA HERD

Consisting of 8 fresh, 16 springing, balance in all stages of lactation. Cows are real sharp with a lot of type. 20 head fresh and close cows from a Maryland herd. A real showy group.

Farmers, if you need milk this group of cows are the right type.

Make plans to see them sell.

CONSIGNED BY
FITE BROS.
 QUARRYVILLE, PA.

GABELACRES HOLSTEIN DISPERSAL

NEWPORT, PA.

FRIDAY, SEPTEMBER 21, 1973

AT 10:30 A.M.

Located in Perry Co., 2½ miles northwest of Newport, Pa. Take Rt. 849 west out of Newport 1 mile, then keep right, after crossing creek keep left.

145 Registered & Grade Holsteins

30 DAY HEALTH TESTS PREGNANCY CHECKED
 OVER ½ ARE REGISTERED D.H.I. RECORDS

105 Cows and Heifers in milk, nearly all are young, majority 2 - 3 and 4 yrs. Fresh cows, springers, and all stages, some to freshen every month.

20 bred heifers, 20 from yearlings to calves. A very good group of Kingpin daughters. Others sired by Lucky Typeblazer, Transmitter, Charm, Emperor, Rockman, Lassie Leader Wis Achievement, etc.

Services are to Sire Power, mostly premium sires, 4 good Red and White grades milking. Latest Rolling Herd Avg. 14,025 milk, 508 fat, 3.6 percent.

A REAL SELECTION TO CHOOSE FROM

LUNCH SALE UNDER COVER CATALOGS

JOHN R. GABEL,
 OWNER
 R.D.1, NEWPORT, PA. 17074

V. ART KLING, Auct.
 RALPH HORST, Auct.
 FRED NAUGLE, Pedigrees
 R. 7, Carlisle, Pa. 17013

Public Sales Register

SAT. SEPT. 15 - 12:30 P.M. Dairy Sale due to health reasons, located ¼ mile South of Clifford, Pa. on the Tompkinsville road, 8 miles west of Carbondale, Pa. and approx. 4 miles east of the Tompkinsville or Lenox exits of Interstate Rt. 81, Susquehanna County, Clifford Township. Sale by Richard Wells, Clifford, Pa. Watson Dayton, Auctioneer, RD5, Montrose, Pa.

SAT. SEPT. 15 - 10 A.M. Public Auction of Farm Machinery; milk equipment; standing field corn; truck; auto; chickens; steers; household goods; antiques; tools; misc items. Located 2½ miles South east of Parkton, Md. Turn off of Route 83 at Middletown Road exit, then turn on Falls Road, go 1 mile in Baltimore Co., Md. Charles W. Shrodes and David W. Shrodes, Auctioneers, R.D.1, Fawn Grove, Pa.

SAT. SEPT. 15 - 9:30 A.M. Public Sale of Valuable Real Estate. Antiques and Household Goods located on the corner of Route 24 and, the road from Olphins Garage to Cross Roads, approx. midway between Red Lion and Stewartstown near Wintertown, in York County, Pa. Sale by Ella and Thomas A. Miller. Robert L. Sechrist, Auctioneer. Luther Miller and Son, Clerks.

SAT. SEPT. 15 - 11:30 A.M. Public Sale of 30 Holstein Fresh and Springing Heifers located on Old Route 1 between Route 896 and Jennersville Hospital, Lincoln University, Pa. Sale by J. Willis Hickman, owner; Lee Moore and Lloyd Kreider, Auctioneers and ringman.

SAT. SEPT. 15 - 2 P.M. Raymond P. Gible Estate valuable 114 acre limestone farm, beautiful all limestone 12 room farm house located in Heidelberg Twp. along Rte. 897, 1 mile west of Schaefferstown, Pa. Mark W. Heisey, Auctioneer.

MON. SEPT. 17 - 7:00 P.M. DST. Annual Fall Special Feeder and

Replacement Cattle Sale to be held at Woodstock Livestock Market, Inc., U.S. Route 11, Woodstock, Va.

MON. SEPT. 17 - 12:30 P.M. Spicer Farms Milking Herd Dispersal at the farm located 9 miles Northeast of Gettysburg, Pa., ¼ mile South of Heidelberg on Rte. 234 between old and new Rte. 15. Sale by William S. Spicer, Gettysburg, Pa., owner; Ralph W. Horst, Auctioneer.

TUES. SEPT. 18 - 7:30 P.M. Public Sale of 50 Registered and Grade Holstein Cows and Bred Heifers. Sale by Howard S. Leaverton, Jr. to be held at

(Continued On Page 40)

Chester County Schedules Dairy Feeding Meeting

An important meeting on dairy feeding will be held at 8 p.m. Wednesday, September 19 at the Central Chester County Vo-Tech School in the cafetorium.

Richard Adams, Penn State dairy feeding specialist, will present the topic "Dairy Feeding-A New Ball Game". Emphasis will be on surviving the feed price situation, protein substitutes and non-protein-nitrogen additives, hazards of protein deficiency in the ration, least-cost grain rations, and balancing the feeding program. Dr. Adam's presentation will be followed by a question and answer session.

Central Chester Vo-Tech School is located east of Coatesville. From Lincoln Highway (old Route 30) turn at the entrance to the Veteran's Hospital. The school is located immediately on right.

Night Sale BIG GUERNSEY SALE Night Sale

Thursday, September 20th — 6:30 P.M.

At the Ass'n. Sales Pavilion, Lancaster, Pa.

55 top selections in the Pa.—Maryland State Sale plus 23 head from Jarrett Everett, Maryland, who has the high herd in the State for successive years.

Three bulls. The females are mostly all fresh or due very soon. Some with as good records as we have ever had in a sale at Lancaster. Many by top bulls represented. For example, 8 by "Master Chief", 8 by "Darimost", and 6 by "May Rose Prince".

These cattle come from the best known Guernsey herds in Penna. and surrounding States. You will have a terrific selection. We will have to sell them fast so be sure and get there early to look them over.

SALE MANAGED BY:
 PENNA. GUERNSEY BREEDERS' ASS'N.
 P.O. BOX 458 CAMP HILL, PA., 17011
 AND
 THE MERRYMAN COMPANY, SPARKS, MD., 21152

PUBLIC SALE OF HOLSTEIN DAIRY CATTLE

Long Meadow Farms Holstein Dispersal. Location: 1½ miles south of Oxford on Old Route 1, between Oxford and Nottingham, opposite the Orthodox Presbyterian Church.

FRIDAY, SEPT. 28, 1973

12:00 Noon

65 HEAD OF HIGH GRADE HOLSTEINS 65

20 of this number are first calf heifers, several due again this fall.

This is a young herd.

Calving Schedule:

- 8 July
- 7 August
- 12 Sept.
- 7 Oct.
- 4 Nov.
- 2 Dec.

15 years of A.B.S. breeding

Per Cow Average from Milk Plant
 12,000 M, and 3.85 Test.

Daus. of these sires rep.: Don Augur Promise, Ivanhoe Sizzler, Bootmaker, Belshazzer, Melody Master and others.

Foundation stock for this herd came from Francis Grubb farm.

Don't miss this sale if you are looking for quota milk.

TB and Bangs cert. vac. 30 day chart
 500 gal. Mojonnier vacuum tank, Walker stamp with 40 ft. 2 in. glass pipeline, 4 Magnetic breaker cup milker units, Sarge Almo 50 plus milker pump, double SS tubs, 1 40-lb. unit, Stewart clippers.

Terms By
WALTER W. & WILLIAM SHEPHERD

Kreider & Diller, Aucts.

Lunch by Oxford Grange 1460

THE NEW OWNERSHIP OF LANCASTER STOCKYARDS INC.

WILL CONTINUE THE POLICY OF A

STOCKER AND FEEDER AUCTION SALE

EVERY FRIDAY DURING SEPTEMBER

NEXT SALE SEPT. 21, 1973

SALE STARTS AT 1:00 P.M.

All Grades, Breeds, Weights

Load Lots — Small Lots

Lancaster Stockyards, Inc.

LANCASTER, PA.

PH. 717-394-2611

MEMBER DEALERS

WALTER M. DUNLAP & SONS
 J. M. HOOBER & SON
 LOUIS LYONS & SON

JOHNSON CATTLE CO
 MERTON W. McCOY
 WM W. McCOY

T G KREIDER
 EDW L BROWN
 S. L. HEILBRON & SONS