

# Hog Prices

## Lancaster Market

Monday, Sept. 3  
No market report available due to Labor Day holiday.

## Vintage Auction

Wednesday, Sept. 5  
HOGS 435: Compared with last Wednesday's Market.

Barrows & Gilts: Mostly \$2 to \$3 lower.

US No. 1-2 200-240 lbs. 49.00-49.50; US No. 1-3 200-250 lbs. 48.00-49.00; US No. 2-4 250-275 lbs. 47.00-48.00

Sows: US No. 1-3 300-575 lbs. 41.50-43.00

## Lancaster Auction

Wednesday, Sept. 5  
Barrows and gilts 5.00-5.50 lower.

BARROWS AND GILTS: One lot US 1 225 lb. 48.00; US 1-2 200-240 lb. 47.35-47.85; US 2-3 190-260 lb. 46.35-47.25.

## New Holland Auction

Monday, Sept. 3  
HOGS 825: Compared with last Monday's market.  
Barrows & Gilts: \$5 to \$5.25 lower.

US No. 1-2 200-240 lbs. 51.75-52.00; US No. 1-3 200-250 lbs. 51.25-51.75; US No. 2-3 245-280 lbs. 50.00-51.75; US No. 2-4 150-190 lbs. 50.00-51.75

Sows: US No. 1-3 300-575 lbs. 46.00-48.00  
Boars: 44.00-46.00

## Lebanon Valley Auction

Tuesday, September 4  
192 Head of Hogs  
Barrows and Gilts \$4 lower.  
U.S. 1-3 195 - 230 pound barrows and gilts 49.85 - 50.50; 2-3 195 - 250 48.35 - 50.10.

Sows: U.S. 1-3 250 - 350 pounds (few) 43.00 - 44.25.  
Boars: (Few) 35.25 - 40.10.

## Indianapolis Auction

HOGS: 2500.  
Barrows and gilts 4.00-4.50 lower, trading slow.  
BARROWS AND GILTS: US 1-2 200-235 lb. 42.50-43.00; 40 head at 43.25; US 1-3 195-240 lb. 41.00-42.75.

## St. Louis Auction

HOGS: 5000.  
Barrows and gilts 4.50 lower, several unsold.  
BARROWS AND GILTS: US 1-3 200-240 lb. 42.50-43.00.

## Peoria Auction

HOGS: 4500.  
Barrows and gilts opening 3.00 to mostly 4.00 lower.  
BARROWS AND GILTS: US 1-2 200-240 lb. 42.00-42.50; early 225 head at 43.00, 30 head at 43.50; US 1-3 195-250 lb. 41.50-42.00.

## Local Grain

Thursday, September 6  
These prices are made up of the average prices quoted by five participating local feed and grain concerns. It should be noted, however, that not every dealer handles each commodity. All prices are per bushel except ear corn which is per ton.

The average local grain prices quoted Thursday, September 6, 1973, are as follows:

	Bid	Offered
Ear Corn, Old	67.33	78.00
Shelled Corn	2.28	2.58
Oats, Local	1.05	1.27
Oats,		
Western	1.47	1.62
Barley	1.90	2.20
Wheat	3.76	3.98

+Bid is the price the dealer will buy from the farmer delivered to the mill. Offered is the price the dealer will sell for at his mill.

**Weed Damage Measured**  
Only in recent years has research made it possible to accurately measure crop damage resulting from weeds. Latest study shows that one pigweed per row foot in soybeans cut yields by one-fourth.

## Omaha Cattle

Thursday, September 6  
Compared with last weeks close -

Closing prices slaughter steers 50-1.50 lower, the least decline on yield grade 2-3 975-1100 pounds mainly for Canadian shipment. Heifers 1.00-1.50 lower, trading on both classes generally slow. Cows steady to 50 cents lower, bulls 50-1.00 lower. Small feeder supply 50-1.00 lower.

Three day receipts 9600 as compared 14,600 previous week and 14,000 a year ago. Slaughter steers approximately 31 percent, heifers 36 percent, predominance Good to average-Choice, modest number high-Choice and Prime. Cows near 17 percent, feeders 11 percent. Despite modest supplies following Labor Day Holiday, trading generally slow with most buying interests not particularly aggressive for numbers. However, fairly good demand for high-Good and low-Choice 975-1100 pound steers yield grade 2-3 for shipment to Canada with these frequently selling at prices equal to high-Choice 1150-1250 pounds yield grade 3-4. Most slaughterers still operating on a custom kill basis at less than capacity and it was pretty much a period of marking time until expiration of Phase IV limitations on September 12. Widespread optimism so prevalent a few weeks ago has been considerably tempered by developments over the past three weeks.

**STEERS:** Load high-Choice and Prime 1091 pounds 3-4 51.50 early, modest volume same grade 1076-1310 3-4 50.25-51.25 on later sessions. Choice 975-1300 2-4 closed mainly 48.50-49.50, some Choice and Prime 975-1025 49.50, few loads Low and average Choice 2-3 49.75-50.00. Mixed Good and Choice 950-1225 47.50-48.50. Good 44.50-47.50. Standard and low-Good, mostly grade 2-3 Holsteins 43.00-44.50.

Average cost slaughter steers for two days 49.10, average weight 1108 pounds as compare 50.85 and 1099 pounds previous week and 34.33 and 1111 pounds a year ago.

**HEIFERS:** Early, high-choice and Prime 956-1039 pounds 3-4 49.50-50.00, same grades at close 898-1107 3-4 48.50-49.00. Choice 825-1050 2-4 47.00-48.50. Mixed Good and Choice 750-1000 46.00-47.00. Good 43.00-46.00. Small lots Standard and Good 42.00-43.00.

**COWS:** Utility and Commercial 35.50-37.50, Canner and Cutter 32.50-35.50, mixed Cutter and low-Utility 35.75-36.25, occasionally 36.50. Shelly Canner 29.00-32.00.

**BULLS:** Bulk grade 1-2 1400-2100 pounds 42.00-45.00, few grade 1 1500-1800 46.50-48.00.

**FEEDERS:** Outshipments from regular market trade 1000 as compared 1500 previous week. Trade slow, prices 50-1.00 lower, supply mainly fleshy two-way steers.

**STEERS:** High-Good and Choice 1020-1112 pounds 48.00-49.25, load Good 848 pounds 47.00. Load low-Good 1136 pounds Holsteins 43.50.

**HEIFERS:** Load Choice 555 pounds 57.50. Load mostly Choice 854 pounds 47.50. Load Good and Choice 813 pounds 45.00.

# Futures Trading

(Closing bids as of Thursday, September 6)

	Chicago Cattle	Chicago Hogs	New York Maine Potatoes	Chicago Fresh Eggs
September				65.85
October	46.45	42.27		66.10
November			5.00	70.00
December	48.30	43.15		71.25
January '74				67.00
February	50.30	43.55		62.10
March			6.10	60.25
April	50.00	41.52	6.45	
May			7.25	
June	49.80	42.70		
July		43.10		
August	49.50	42.45		
October	49.50			

Trend—Cattle are Lower, Hogs are Lower, Potatoes are Higher, and Eggs and Higher.

a-asked b-bid n-normal  
Markets provided by Commodity Dept., Reynolds Securities, Inc.

## Oklahoma City Peoria Cattle

Thursday, September 6  
Estimated Receipts 3200  
Same Day Last Week 9604  
Same Day Last Year 8246

Compared to late last week, feeder cattle and calves strong to 1.00 higher; majority receipts Good and Choice 400-800 pound steers and 350-650 pound heifers with quality not as attractive as recent Thursday as offerings include a larger percentage of good grade cattle; moderate attendance buyers.

**FEEDER STEERS:** Few Choice 335-366 pound 72.50-80.00; 400-500 67.50-74.80; 500-600 60.75-66.10; 600-675 58.00-61.00; 700-800 54.25-57.80; 800-909 51.90-56.60, load 813 pound at 56.60; mixed Good and Choice 300-500 60.50-71.80; 500-700 55.00-61.25; Good 400-500 54.50-58.00; 500-700 49.50-57.00.

**HOLSTEIN STEERS:** Small lot Good 420 pound 53.50; Good 544-673 50.60-52.00; Good 733-914 47.50-50.40

**FEEDER HEIFERS:** Choice 400-500 pounds 56.00-57.25; 500-600 50.75-54.00; 600-660 50.00-51.70; mixed Good and Choice 300-500 52.00-57.25; 500-600 48.25-49.75, Good 400-550 47.00-52.00.

## Growing Degree Days, Rainfall

A report from Penn State of weekly crop and weather roundups with a report on weather conditions for the week ending September 3.

In Lancaster, the average temperature for the week was 82 degrees, 12 degrees above the normal average for the time of year; weekly high was 99 degrees, low 65 degrees.

Growing degree days from April 1 for crops that start at 50-degrees totaled 2636, or 112 more than normal in an average year.

Rainfall for the week totaled .15 inch; rainfall from April 1 totaled 19.11 inches, or -2.54 inches less than normal

Thursday, September 6  
Receipts this 4 day period 3200, compared to last week 5600, and to last years 4 day period 4600.

Compared with last weeks close. Slaughter steers 50-1.00 lower, erasing Tuesdays advance. Slaughter heifers steady to 50 lower.

Cows and bulls steady. Supply 70 percent slaughter steers, 25 percent heifers and the balance mostly cows.

**SLAUGHTER STEERS:** Choice and Prime 1225-1385 pounds 3-4, 49.00-50.00; early, load same grade 1188 pounds 51.75. Choice 950-1150 2-4, closed 49.25-50.50; load 50.75; Tuesday, package 1150 pounds 52.00. Choice 1150-1320 3-4, 48.00-49.25. Mixed Good and Choice 900-1300 47.00-48.50. Good 46.00-47.00. Package Standard and Good Holsteins 42.50.

**SLAUGHTER HEIFERS:** Choice 800-1000 pounds 2-4, 47.50-50.50. Closing 49.00. Three loads Tuesday 51.00. Mixed Good and Choice 750-1025 46.00-48.50; late, 46.00-47.50. Good 45.00-46.00.

**COWS:** Utility and Commercial 35.50-38.00. High Dressing Utility 39.00. Cutter 34.50-36.50. Canner 32.00-34.50.

**BULLS:** Yield Grade 1-2 1100-1700 pounds 40.00-46.00; Few yield grade 1 47.00-47.50.

## New York Dressed Meats

Thursday, September 6  
Compared with Wednesday: General character of meat trade no different than for last few weeks with outlet holding narrow from local wholesale into retail channels and purchases mainly piece meal. Going conversation however points up fact that offerings of dressed carcass meat were more liberal on mid-session with shippers endeavoring to secure orders for arrival subsequent to September 12 but nothing of record in happenings.

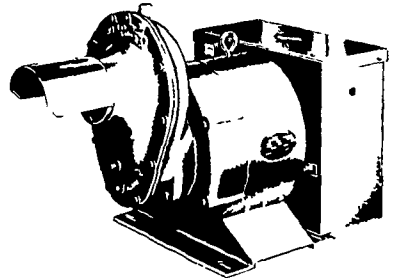
## U. S. Inspected Livestock Slaughter

Estimated Daily Livestock Slaughter Under Federal Inspection

	CATTLE	HOGS	SHEEP
Week-to-date	327,000	798,000	120,000
Same period last wk	400,000	922,000	135,000
Same period last yr	405,000	909,000	127,000



TRACTOR DRIVEN ALTERNATORS

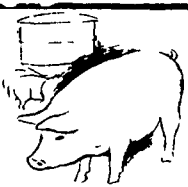


BUY OR LEASE YOUR WINPOWER ALTERNATOR TODAY  
CALL 717 733-7911  
FOR AN APPOINTMENT ON YOUR FARM  
L. J. EDWARDS  
FARM SALES MGR.

**ELECTROMECH** LP NATURAL GAS GASOLINE DIESEL ENGINE GEN SETS TO 200,000 WATTS  
ROUTE 222, EPHRATA, PA. 17522  
PHONE (717) 733-7911  
ELECTRIC MOTOR • GENERATOR • POWER TOOL SPECIALISTS

**WORLDS LARGEST MFG. OF TRACTOR-DRIVEN ALTERNATORS** with 45 years continuous experience to give you the best quality unit for long years of service, and to protect your family against huge losses due to power outages, and brown outs.

SELL YOUR BUTCHER HOGS DIRECT



Now accepting Hogs on Grade and Yield basis.

**Ezra W. Martin Co.**  
Garden Spot Quality Meats  
Call AL SHAFFER At Lancaster Pa 717 397 5113 Evenings (215) 779 3847