

HARRISBURG MEMO . . .

To: *The People of Pennsylvania*
 From: *Milton J. Shapp, Governor*



On a recent tour of strip mine operations in Western Pennsylvania, I stood with a farmer on a hill covered with clover, alfalfa and timothy.

Our eyes scanned fields which once had been the site of a large strip mine operation. The change from the strip mine to farm field was spectacular.

I remarked then and there and along a 200 mile tour of striping operations that Pennsylvania has the finest strip mine reclamation

program in the nation. And I found agreement with farmers and strip mine operators.

The strip mine tour I found it necessary to take so that I could personally get a look at this problem. By talking with people in different parts of the state I find out much more than I can by sitting at my desk in Harrisburg.

Those I did talk with agreed that we don't want to see our state mines reclamation program harmed by federal

legislation.

It is a fact that federal legislation now before the House Interior Committee could permit virtually uncontrolled strip mining in other parts of the country. A federal law such as this would put Pennsylvania coal producers at a real disadvantage.

Coal is vital to this nation and to this state if we are to solve our present energy crises. Here in Pennsylvania we must continue to promote the use of coal because it is the one logical answer to our energy needs.

The issue of good strip mine reclamation is extremely important to all Pennsylvanians. It affects three major groups of people.

One group, the conservationists and the sportsmen, want to keep our environment as clean as possible for all kinds of recreational activities. The second group is the coal producing industry, so vital to our future. The third, in light of the energy crisis, is the consumer.

Planning Meals

Keep color in mind when planning meals. Consider contrasting colors in the foods you serve. That's a reminder from Extension foods and nutrition specialists at The Pennsylvania State University. Color is also a key in selecting foods rich in vitamin A. The darker the green or the deeper the yellow, the more vitamin A the vegetable contains.

WANT ADS

PHONE 394-3047 or 626-2191

WHITE WASHING
 with
DAIRY WHITE

- Dries White
- Does Not Rub Off
- No Wet Floors
- Is Compatible With Disinfectant

MAYNARD L. BEITZEL

Witmer, Pa.

392-7227

HIGH PRESSURE WASHING

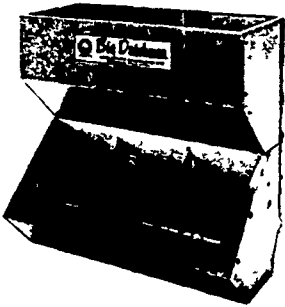
OF POULTRY HOUSES AND VEAL PENS

BARRY L. HERR

1744 Pioneer Road, Lancaster, Pa.
 Phone 717-464-2044

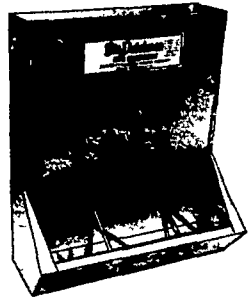
Formerly operated by Maynard L. Beitzel

**Big Dutchman.
 HOG FEEDERS**



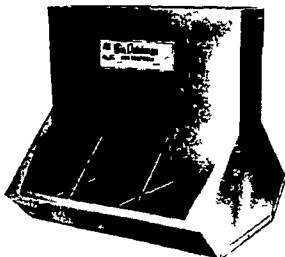
3 PLACE FINISHING FEEDER

Height: 30 inches
 Width: 15 inches
 Length: 31 inches
 Capacity: 150 lbs.



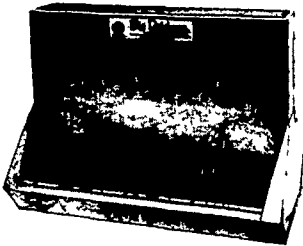
3 PLACE CREEP FEEDER

Height: 20 inches
 Width: 7 inches
 Length: 16 inches
 Capacity: 25 lbs



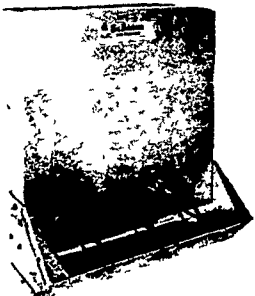
6 PLACE FINISHING FEEDER

Height: 30 inches
 Width: 27 inches
 Length: 31 inches
 Capacity: 100 lbs.



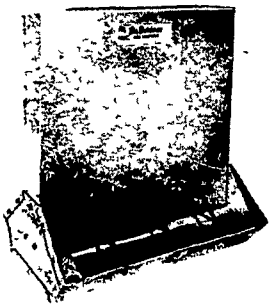
8 PLACE FINISHING FEEDER

Height: 30 inches
 Width: 27 inches
 Length: 41 inches
 Capacity: 130 lbs.



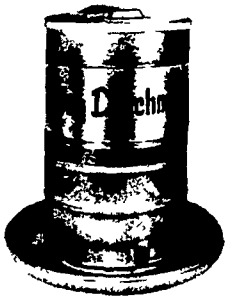
4 PLACE NURSERY FEEDER

Height: 29½ inches
 Width: 12 inches
 Length: 28 inches
 Capacity: 60 lbs.



8 PLACE NURSERY FEEDER

Height: 30½ inches
 Width: 20 inches
 Length: 28 inches
 Capacity: 75 lbs.



8 BUSHEL ROTARY CONFINEMENT FEEDER

This low priced 8 bushel Hog Feeder is ideal for Automatic system and confinement feeding. A versatile feeder, it is small enough to start nursery pigs on creep feed and large enough to finish large hogs.

HERSHEY EQUIPMENT CO.

215 Diller Ave.

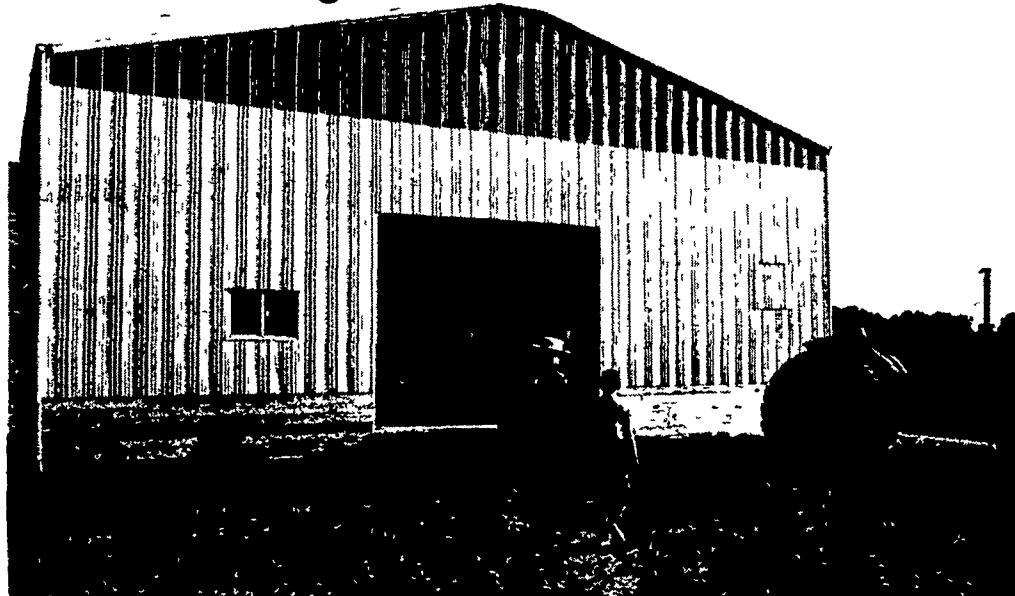
New Holland, Pa.

Phone (717)354-5168 or (717) 872-5111

AUTHORIZED
Big Dutchman.
 DISTRIBUTOR

AGWAY

Twenty years from today
 he'll still remember why
 you put Alcoa Temper Rib sheet
 on this building.



Begin by telling him that Alcoa® Temper Rib® sheet is competitive with galvanized, both in strength and price. Then explain how much erection time you saved because lightweight aluminum was easy to handle and cut (a power saw can cut several sheets at once). Now tell him why you won't have to paint this building . . . because aluminum resists corrosion all by itself and doesn't need the protection of paint. You might even figure out how much several coats of paint would cost over a 20-year period

and how much you'll be saving. Finally, get into the added comfort of aluminum . . . how aluminum's reflectivity reduces summer stress on livestock and poultry, results in better feed-conversion rates and increased profits. In 20 years, your son may own this farm, but he'll remember what you said. And you'll both agree that, thanks to Alcoa Temper Rib sheet, this building doesn't owe either of you a thing. For more information, see your local Agway outlet.

Change for the better with
 Alcoa Aluminum



Super Temper Rib
 Temper Rib

SALE PRICE

\$19.60 /sq.

\$14.49 /sq.

Regular Price

\$24.50 /sq.

\$19.30 /sq.



SUPPLY CENTER

1027 Dillerville Road, Lancaster
 24 Hour Service Daily — Ph: 717-397-4761