

All-American Dairy Show Will Include Dairy Princess Pageant

The Tenth Annual Pennsylvania All-American Dairy Show will be held at the Farm Show, September 24 through 28, under the joint sponsorship of the Pennsylvania Dairy and Allied Industries Association and the Pennsylvania Department of Agriculture.

The All-American is now recognized as a full-fledged member of the top circuit of international dairy shows. In recent years exhibitors from more than half of the 50 states and Canada are entered for each show and at one time or another virtually every state in the union has been represented.

A new honor for the All-American this year is the sanctioning of the Brown Swiss breed show as the Eastern National show of the Brown Swiss Cattle Breeders' Association. For a number of years the Holstein-Friesian Association has designated the All-American as its Eastern National show.

Another highlight of the 1973 All-American will be the Dairy Princess pageant. Thirty-three young ladies, previously winners of county Dairy Princess titles, will compete for the crown to be vacated by Princess Rose M. Winkelbauer, a sophomore at

Edinboro State College. The number of contestants is seven more than the previous record set just last year.

All six breeds of dairy cattle will conduct separate shows within the All-American. Invitational sales will also be sponsored by a trio of breed associations - Ayrshire, Brown Swiss and Holstein.

Two trial innovations from last year's schedule have been retained for the 1973 format. Sunday, the day before the official opening, will again be Family Day, an invitation for visitors, particularly non-farm visitors, to come to the cattle

barns at the Farm Show and get a look at the behind-the-scenes activity of a big-time agricultural exposition.

The other event back for a second year is "railbird" judging. Twice each day a group of six dairy cattle from the same class will be paraded around the main ring before they are judged officially. Spectators will be given scorecards and an opportunity to place them as they see it. Those coming closest to the actual final placing will receive a trophy.

The opening day of the All-American is dedicated to young

Record 175 Entries in NEPPCO Market Egg Show

The NEPPCO Market Egg Show closed last week with a record-breaking 175 entries from ten Northeastern states. The previous record was 163 entries in the 1971 show held at the Concord Hotel in New York State. In 1968 - The last year a NEPPCO Exposition was held in Harrisburg - there were 107 entries.

As might be expected, Penn-

sylvania boasts the largest number of entries this year - 82 - but Maine is in second place with 39. Other entries came from Connecticut, Delaware, Maryland, New Hampshire, New Jersey, New York, Ohio and West Virginia.

The entries are now being judged by state egg inspectors who arrive unannounced at the packing room of the entrants and select six dozen cartoned eggs of each class entered for judging and scoring. Score cards are then sent to NEPPCO where a committee will review the scores and select the Blue Ribbon and Honorable Mention winners.

Cartons of all entries with winning ribbons will be displayed at the NEPPCO Convention and Exposition in Hershey October 30 thru Nov 1.

In 1954 State government employed 62,102 persons. That figure has now grown to a record high of approximately 124,300

people with state champion 4-H and FFA teams competing in the Invitational Youth Dairy Cattle Judging Contest. There is also an intercollegiate division with about 15 colleges and universities represented. At the same time, district and regional winners of 4-H and FFA dairy shows will be showing their prize stock in the Pennsylvania Junior Dairy Show.

Although regular registration closed August 24, late entries will be accepted through September 5 if they are accompanied by an additional fee.

Farmer's Share

Farmers received an average of 44 cents out of every dollar spent by consumers in retail stores for market basket foods during the second quarter of 1973, according to USDA's Marketing and Transportation Situation report issued recently. That's the same as the first quarter, but up five cents from a year earlier.

Moreover, the farmer's share was 45 cents during June. That's the highest since 1953.

LANCO BEDDING FOR POULTRY & LIVESTOCK WOOD SHAVINGS

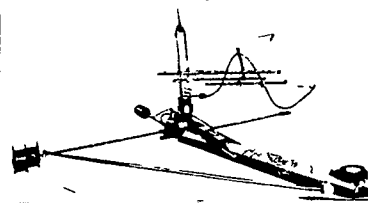
Bag or Bulked

Complete Distribution by Your Specification in Poultry House by blower.+
+5 Ton of More Order.

CALL 299-3541

BEFORE YOU BUY ANY SILO OR SILO EQUIPMENT....

- + Starline Unloaders
- + Auto. Belt Feeders
- + New Roller Mills
- + Used 24' Badger unloader with 24" fan \$1,000.
- + Used Kool 54" blower \$350.
- + Used Jamesway 20 ft. unloader
- + Starline Water Bowls
- + All types of conveying systems
- + New round hay racks

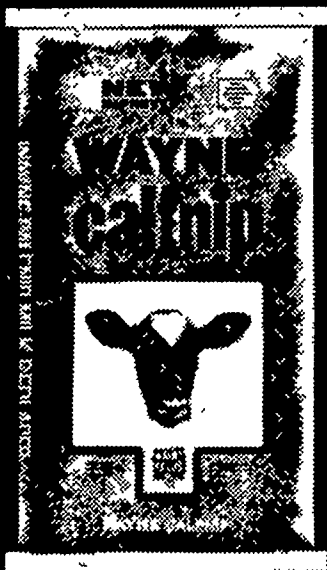


We Service What We Sell

LANCASTER SILO CO., INC.

2436 Creek Hill Road or
2008 Horseshoe Road, Lancaster, Pa.

**NEW
IMPROVED**



WAYNE CALFNIP® MILK REPLACER

NEW All milk protein. New Calfnip is high in milk products. No cereal filler. Better digestibility.

NEW High fortification. New Calfnip delivers vitamins A, D, B₁₂, K, thiamine, niacin and C, plus a new blend of essential minerals. Also contains methionine, a vital building block of protein.

PLUS Many other improvements that you will see in the calves you raise on new Wayne Calfnip.

USE WAYNE ANIMAL
HEALTH AIDS TO KEEP
YOUR LIVESTOCK AND
POULTRY HEALTHY



**CHARLES E. SAUDER
& SONS**
R D 1, East Earl

HERSHEY BROS.
Reinholds

WHITE OAK MILL
R D 4, Manheim

**STEVENS FEED MILL,
INC.**
Stevens, Pa

PARADISE SUPPLY
Paradise

POWL'S FEED SERVICE
R D 2, Peach Bottom

GRUBB SUPPLY CO.
Elizabethtown

**H. M. STAUFFER
& SONS, INC.**
Witmer

**JE'MAR FARM
SUPPLY INC.**
Lawn—Ph 964-3444

ROHRER'S MILL
R D 1, Ronks

HAROLD H. GOOD
Terre Hill

**MOUNTVILLE
FEED SERVICE**
R. D 2, Columbia

**DUTCHMAN FEED
MILLS, INC.**
R. D 1, Stevens

No time like the present
No time like **BAKER'S**
AG * LIMESTONE



HARRY FREESE
Oxford - 932-9762

AMOS EBY
Paradise - 687-6091

CLIFFORD HOLLOWAY
Peach Bottom - 548-2640

FRANCIS WENGER
Quarryville - 786-2678

CLYDE K. ESHLEMAN & SONS
Washington Boro - 872-7391

F. H. BUCHER
Rothville - 626-6504

... is the very best time to spread limestone. It then has all winter - through rain, snow, freezing and thawing - to seep to root depths. Lime needs time to unlock vital nutrients and sweeten the soil so the fertilizers you apply in the Spring will do all you expect them to. Give you bigger, healthier crops.

Baker's agricultural limestone is available in two types, high-magnesium or high-calcium. Both sweeten acid soil, raise pH and unlock vital plant nutrients. For fast, efficient delivery, call your dealer or Baker today.

| | Calcium Oxide | Magnesium Oxide |
|---|---------------|-----------------|
| Conestoga Valley balanced limestone from our Ephrata quarry | 53.5% | .5% |
| Prime Lime dolomite limestone from our Gap quarry | 30% | 20% |
| Hy-Mag limestone from our Paradise quarry | 30% | 20% |

Products of The J. E. Baker Co.
Call collect - (717) 354-4202