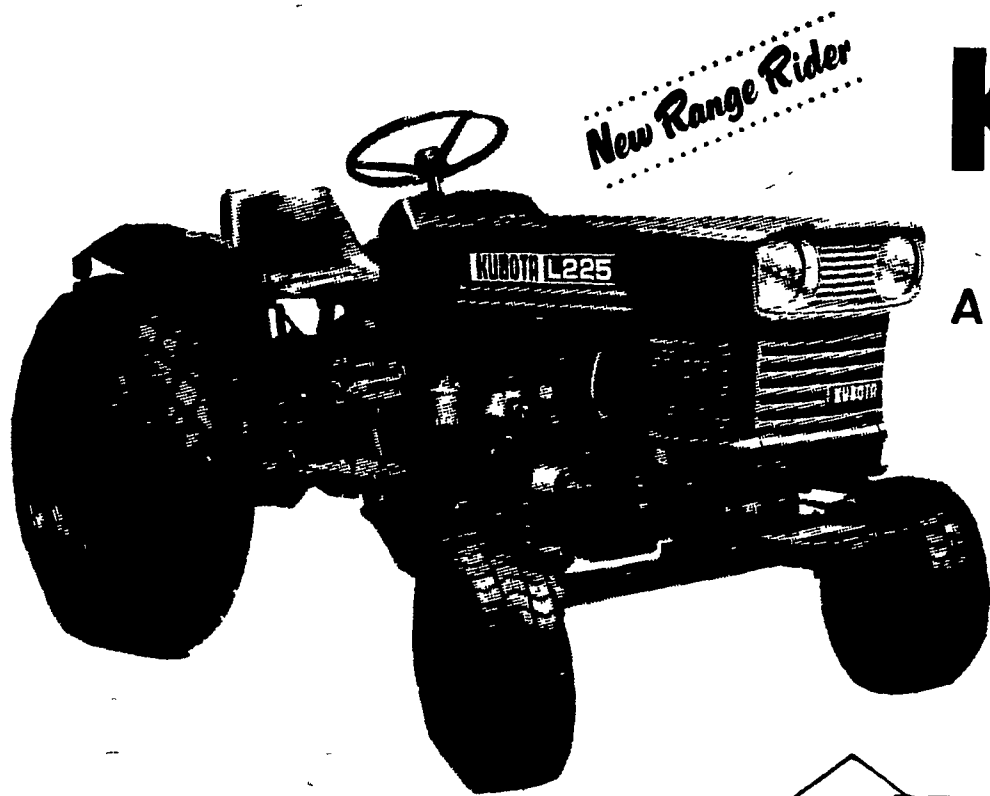


SALE!



Never has so much been done for so little.



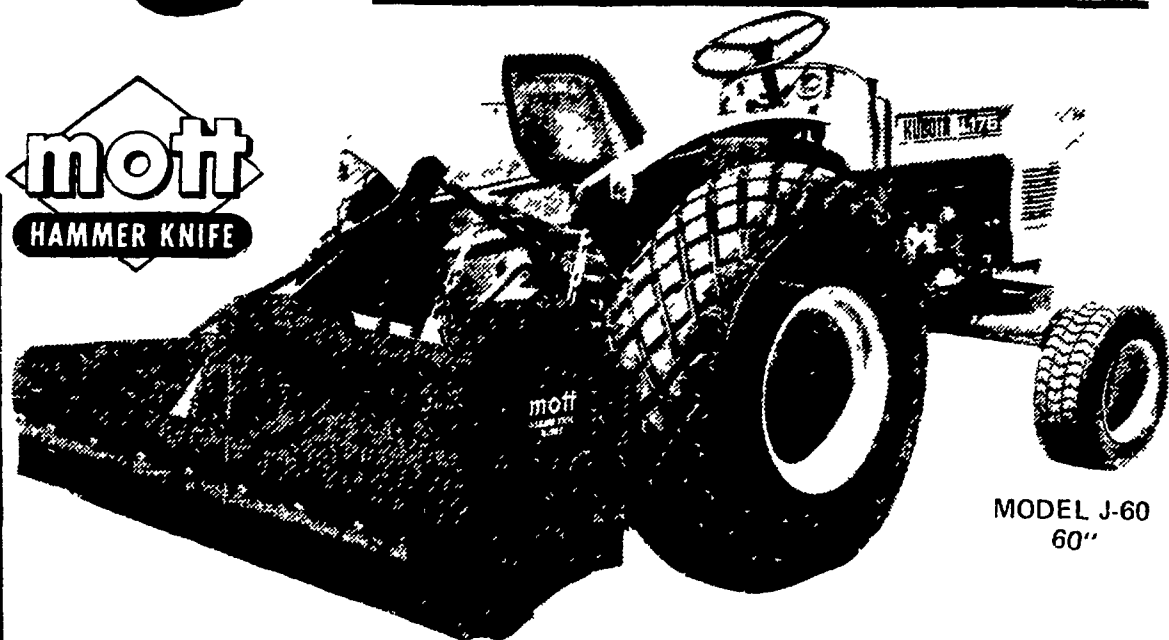
KUBOTA TRACTOR

Model **L225** 24HP diesel

A new and different breed of tractor to fill your work gap!

- 3 cylinder quieter Diesel power with economy and dependability.
- A wide choice of job types with 8 forward, 2 reverse and 2 PTO speeds (rear).
- Category 1 3-point hitch.
- The versatile L225 is an all year performer.

Built to accommodate a full line of implements for MOWING, CULTIVATING, TILLING HAULING, LIFTING, SNOW THROWING, FRONT-LOADING and many others



MODEL J-60
60"

MOTT HAMMER KNIFE SAFETY FLAIL MOWERS

CUTS BETTER—SAFER!

The knife-like flails of the MOTT system, with their edge-wise slicing action, cut cleaner and use less power than other type flails

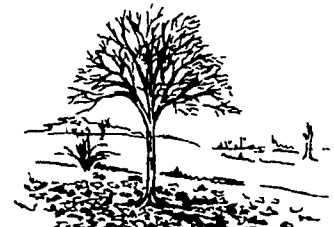
Being light weight and free swinging, they fold back when hitting obstructions, absorbing the force of impact—and thus minimizing the danger of throwing struck objects.



SHRED WEEDS



MOW LAWNS



MULCH LEAVES

**COMPLETE LINE OF
PARTS & SERVICE**

SEE US AT AG-PROGRESS DAYS AUG. 28-29-30 AT OLIVER BOOTH.

FARMERSVILLE EQUIPMENT, INC.

HOURS:
Mon. & Thurs. - 8 a.m. to 9 p.m.
Tues., Wed., Fri. - 8 a.m. to 6 p.m.
Sat. - 8 a.m. to 5 p.m.

R.D. 2, Ephrata, Pa.

Located in Farmersville

Phone 354-4271