

# Public Sales Register

**SAT. AUG. 25 - 11 A.M.** Public Auction of 150 Holstein Cows and Open Heifers, full line of farm machinery. Sale by Thomas H. Hunter at Hermitage Farm, Centreville, Md. H. Rudnick & Sons, Auctioneers.

**SAT. AUG. 25, 12 Noon** Raymond B. Nolt Holstein Dispersal Sale of 62 High Grade Holstein Dairy Cattle located on Route 422 east from Lebanon to Womelsdorf then Route 419 North, past Four Points Hotel, to Rehrersburg to Strausstown Road, turn right, first farm on left; or 419 South off Route 22, second road left, first farm on left. Watch for sale signs. Terms by Raymond B. Nolt, Bethel RD1, Pa. John E. and Paul E. Martin, Auctioneers.

**SAT. AUG. 25 - 11 A.M.** Public Sale of Farm Machinery and Complete Holstein Dispersal

located on the farm on Woodland Way near Myersville, in Frederick County, Maryland, 12 miles east of Hagerstown and 12 miles west of Frederick. Turn north off Route 40 onto Easterday Road and follow sale signs. Sale by Ray Kline, owner, Myersville, Md.; A. Doty Remsburg, Sale Mgr. and Auctioneer, Jefferson, Maryland.

**MON. AUG. 27 - 12:30 P.M.** Holstein Dairy Sale located in Cumberland County, just south of Newville, Pa., along Big Spring road. Use Newville Exit off Int. 81. Turn north on 233 to Newville, then left along Big Spring. Sale by William Aukema, owner, RD1, Newville, Pa. Ralph Horst, Auctioneer.

**WED. EVE. AUG. 29 - 6:30 Sharp** Public Sale of Household Items and Antiques located near

Christiana. Travel out W. Broad St. about ¼ mile, watch for arrow at MYERS LANE. Sale by Frank W. Myers, Diller and Kreider, Auctioneers.

**THURS. AUG. 30 - 12:30 Noon P.M.** Guernsey Sale at the Ass'n. Sales Pavilion, Lancaster, Pa. Sale Managed by Penna. Guernsey Breeders' Ass'n. P.O. Box 458, Camp Hill, Pa. 17011

**THURS. NIGHT AUG. 30 - 8 P.M.** Public Auction - Dairy Sale located 5 miles North of Route 222 along 897, 2 miles North of Reinholds. Sale by Vernon and Ray Kline, owners; Randal Kline, Auctioneer.

**FRI. AUG. 31 - 1:00** Rockwell's Livestock "Harvest Special Dairy Cattle Auction" located 3

(Continued On Page 33)

## July Eggs same as June Production

Laying hens in Pennsylvania produced 291 million eggs during July according to the Crop Reporting Service. This was about the same as last month but two percent less than a year ago.

The average number of layers on hand during July was 14.7 million, the same as last month and one percent less than the number on hand a year ago.

The average daily rate of lay was 63.9 eggs per 100 layers in July, compared with 65.8 in June and 65.0 a year ago.

United States egg production during July was 5,455 million eggs, one percent more than June, but six percent less than last July's production. Layers on hand during July averaged 281.3 million, one percent less than the June average, and six percent less than a year ago. The average rate of lay was the same as a year ago.

## Two Honored For 25 Years Service

Sperry New Holland Division of Sperry Rand Corporation is honoring two of its employees who have completed twenty-five years of service with the company this month.

Raymond H. Little, 325 Riverview 4 West, Great Falls, Montana, Field Serviceman at Branch 70; and Melvin D. Riker, New Holland RD2, Toolmaker A in the Toolroom.

### NOTICE

### AUCTIONEERS!

We print sale bills.

Call 394-3047 for price.

## BUTLER ALL-STEEL FARM BUILDINGS

**M. K. HOKE ESTATES**  
148 SO MAIN ST  
Manheim, Pa  
665-2266

## FEEDER PIG SALE 600 HEAD

**SATURDAY, SEPT. 1, 1973**

One mile North of Goodville, East Earl Twp., Lancaster Co., Pa.

SALE NO. 1 1:00 P.M.

360 Head of York, Hampshire

and Duroc Feeder Pigs

3 way Cross Breeding

All breeding stock used from Certified Boars.

ALSO 12 HEAD OPEN GILTS.

Terms by

John J. Zeiset

SALE NO. 2 - 3:00 P.M.

240 Head of York, Hampshire

and Duroc Feeder Pigs

Terms by

Paul M. Zeiset

Information furnished day of sale or call 215-445-6298.

Elton Horning, Auctioneer

## PUBLIC SALE OF HOUSEHOLD ITEMS and ANTIQUES

**LOCATION:** Near Christiana. Travel out W. Broad St. about ¼ mile, watch for arrow at MYERS LANE.

**Wednesday Evening 6:30 Sharp**

**AUGUST 29, 1973**

ANTIQUES include: old fashion dentist drill; old oak extension table; (2) piano stools (claw foot); cane chair; pair oak love seats; old pine bench; oak chest of drawers; record cabinet; oak drop-leaf table; plank chairs; small oak library table; (2) pot belly stoves; dressers; old Large Mirror; milk kettles; pump-tough; lantern; English saddle.

Sofa Bed (like new); (2) Bamboo reclining chairs; other reclining chairs; platform rocker; studio couch; double beds with mattresses; floor and table lamps; comforts; covers; 12 x 12 rug; throw rugs; pots; pans; skillets; dishes; set of fiesta ware; other kitchen wares; good metal desk; small cabinet desk; base cabinet; typewriter stand; Kelvinator Ref. (good); Admiral Ref.

Lawn and garden tools including rakes; hoe; water and sprinkling hose; fert. spreader; shovel; ½ ton chain hoist; deep well submersible pump.

Many items too numerous to mention. Items for sale can be viewed afternoon of sale, all items to be moved same evening. Owners have moved out of state making sale necessary.

Sale by **Frank W. Myers**

Aucts.: **Diller & Kreider**

C. H. WOLGEMUTH & SONS

## FALL FARM EQUIP. SALE Wed., Sept. 12, 1973

AT 10:00 A.M.

Located: 4 Miles West of Manheim. Lancaster Co. Pa. Take Hossler Rd. to Valley Rd. Watch for sale signs.

**SPECIALIZING IN FALL HARVESTING EQUIP.**

**TRACTORS—HARVESTERS—PICKERS**

Large equip. of all kinds. Tools—Hardware etc. Cousin with Dry Goods.

Notice Bring in your equip. before Sale day. Open to receive goods from AUG. 29 TILL SALE DAY. Items brought in last will be sold last. Good used machinery is scarce and selling strong. Turn your surplus into cash. We sell on commission. If planning a fall sale, see me for rates and dates. Sellers—Buyers—or Visitors—All invited.

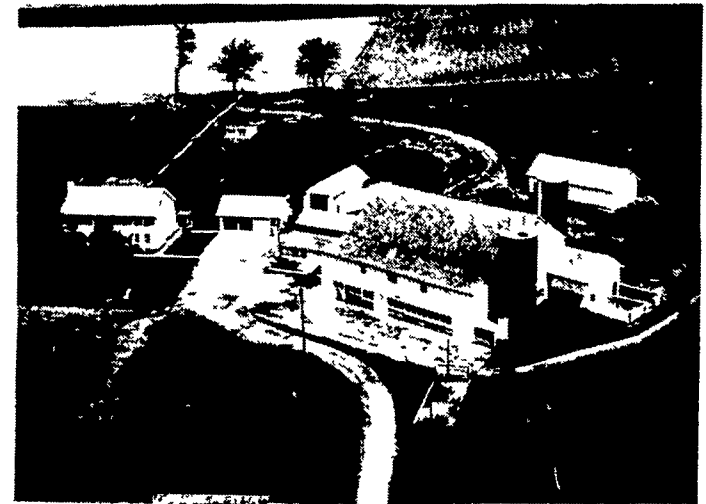
**LUNCH AVAILABLE—TERMS CASH—CLOSED SUNDAYS FOR INFORMATION CALL C. H. WOLGEMUTH, SALE MANAGER PH. (717) 665-5664 MANHEIM, PA.**

## PUBLIC SALE

**VALUABLE 114 ACRE LIMESTONE FARM SATURDAY, SEPTEMBER 15, 1973**

at 2 P.M.

Located in Heidelberg Twp. along Route 987, 1 mile West of Schaefferstown.



This is the actual picture of farm, beautiful all limestone farm house with 12 rooms, stone fireplace, house has two baths, at present is laid out for two families with 2 modern kitchens, 2 stairways, 2 outside entrances on south side, enclosed porch on north east and entrance for both sides, cellar under all of house, hardwood floors, Losch coal furnace with radiator vapor heat, 190 ft. never failing well, cement block 3 car garage with shop bench in front, 10,000 bu. potato cellar which can be used to store machinery, corn shed 50' by 24' with 4' crib on each side, 2 other corn cribs 45' long one 5' wide, other 6' wide, large barn facing south with 2 dens to drive in, set up for dairy, 3 rows stanchions for 45 cows, rest of barn in heifer pens, barn cleaner in good condition with new 5 HP motor, 2 barn fans, 1 on east side and 1 on west, cement barnyard, bull pen, milk house 16' by 16', double stainless steel wash tubs with stainless steel pipeline to dairy barn for dumping station, 600 gal. Unico milk tank, 2 tile silos, 1 14' by 43', 1 12' by 50', 52 gal. hot water heater, water softener for milk house and house, 280 gal. diesel fuel tank, electric pump with 20 amp meter, 200 amp double throw switch, 20 ft. grain auger used for coal conveyor in house cellar, macadam lane 3-10 of a mile, farm has 25 acres in good Alfalfa, 17 acres in permanent pasture, the rest in corn, this is a beautiful fertile limestone farm for dairy or beef cattle or has great building opportunities with public roads on three sides.

Inspection of farm Aug. 25-1 to 4 P.M., Sept. 1 and 8, 1 to 4 P.M. or by appointment. Call 949-3348 or 272-9757.

Condition of sale - 10 percent day of sale, settlement within 60 days after sale.

### RAYMOND P. GIBBLE ESTATE

MARK W. HEISEY, Auctioneer  
Egli, Walter, Reilly & Wolfson - attys. at law