

Witmer

(Continued From Page 1)

"It looks like I'll be coming right back to the farm after I graduate," Peter says. "I had considered doing other things for awhile - the Peace Corps, veterinary school - but I think I want to start farming right away. And I know I want to start with, and stay with, Guernseys."

In addition to his formal college training, Peter is getting some practical business experience at Penn State as treasurer of Alpha Zeta, the honorary fraternity for agriculture and biology students. "Every term I'm responsible for about \$13,000. That's a lot of bills to pay and a lot of books to keep. I'm learning a lot about handling money, and I'm glad for the opportunity."

While Peter has temporarily dropped out of the local dairy scene, he is still very active at Penn State. His most recent honor there was being elected to the Coaly Society, an honor bestowed on only a very few outstanding ag students. He was also on the college dairy judging team, assistant editor of the Penn State Dairyman, member of the American Dairy Science Association, vice-president of the Penn State Dairy Science Club, and chairman of the Dairy Exposition Banquet Committee. Recently, he represented the

Kathy Early Named Lebanon's Poultry Queen



Kathy Early

Penn State Dairy Science Club at the National Dairy Science Association convention in Pullman, Washington.

Kathy Early is the new Lebanon County Poultry Queen. The 18-year-old graduate of Annville-Cleona High School is the daughter of Mr. and Mrs. Lloyd R. Early, Lebanon RD4. She is a student at the National Legal Secretarial School in Hagerstown, Md.

She was crowned last Saturday night during a Poultry Queen Pageant at Boscov's Department Store in Lebanon.

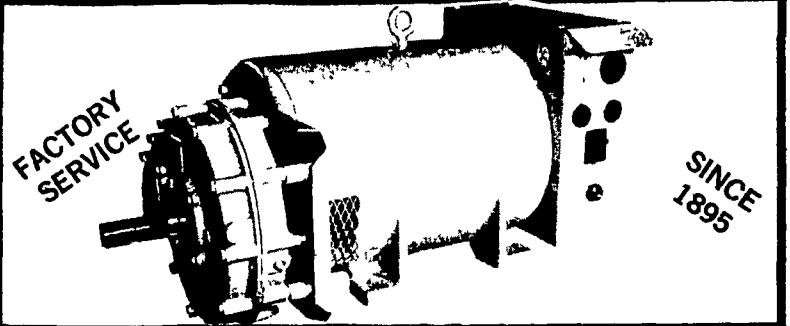
Kathy was active in school, church and 4-H activities. She

was a member of the South Mountain 4-H Club for six years and held the offices of secretary, treasurer and social chairman. She is a member of the Cornwall United Methodist church where she plays piano and organ, and sings in the choir.

In high school, she was an honor student and a member of the field hockey team, tennis team, varsity club, senior high chorus, glee club and the year-book staff.

Among the many honors she's received, Kathy numbers a Girl of the Year award from the Lebanon County Federation of Women's Clubs, and a listing in Who's Who of American High Schools.

FIDELITY ALTERNATOR BUILT IN LANCASTER



LOADSTAR

WHY ACCEPT A LIGHT DUTY "STAND BY" GENERATOR WHEN YOU CAN HAVE FIDELITY'S CONTINUOUS HEAVY DUTY LOADSTAR INDUSTRIAL ALTERNATOR

Super Motor Starting Capability
All Helical Gear Drive - No Chains or Belts

FREE DEMONSTRATION on Your FARM without obligation

Buy one FIDELITY LOADSTAR Alternator in your life time,

It's the only one you'll ever need.

FIDELITY ELECTRIC COMPANY INC
332 NORTH ARCH STREET
LANCASTER PENN 17603
TEL 717 397-8231

In the Kitchen

POTATO PANCAKES

- 1 pkg. (12-oz.) frozen Idaho shredded potatoes
- 3 tbsps. chopped chives
- 1 tsp. salt
- 2 eggs, lightly beaten
- caviar (optional)
- sour cream (optional)

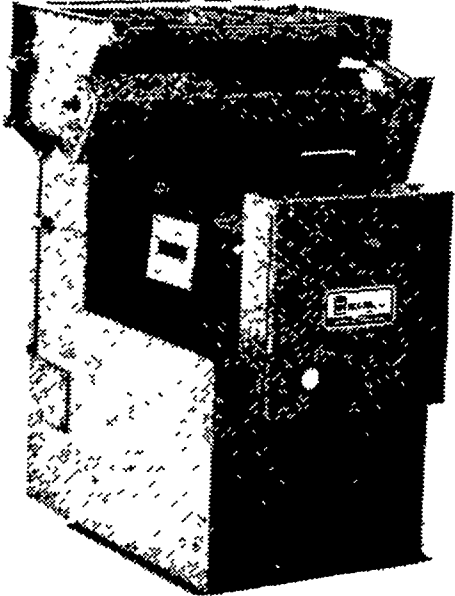
Let potatoes thaw, drain well on paper towels. Mix with chives, salt and eggs. Drop by tablespoon into about 1-inch cooking oil (hot), flattening slightly with spatula. Cook until golden brown on both sides. May be served hot as hors d'oeuvres with caviar and sour cream.

MIX-MILL®

AT
AG PROGRESS DAYS '73

HERSHEY, PA.

AT THE
MIX-MILL®
EXHIBIT



See a modern automatic farm feed factory and grain roaster in operation. Also on display will be a grain and feed storage and transport equipment.

A MIX-MILL FARM FEED SYSTEM IS:

- +AUTOMATIC - Starts with the push of a button, turns itself off when finished.
- +ACCURATE - Meters and blends as it grinds - 98 percent accuracy.
- +VERSATILE - Turn dials for different ingredient ratio mixes.
- +ECONOMICAL - 5 cents a ton power cost to grind and mix.
- +SAFE - Magnets trap tramp steel, motor shuts off for overload or interruption of ingredient flow.
- +PROFITABLE - Home or locally-grown grain, freshly processed each day or feeding. Financing or leasing available.

L. H. BRUBAKER, INC.
350 Strasburg Pike
Lancaster, Pa.

ROY A. BRUBAKER
700 Woodcrest Ave.
Lititz, Pa.

MR. FARMER:



ARE YOU
INTERESTED IN
COMPLETE
SERVICES?



Your Independent RED ROSE Dealer Offers a
COMPLETE FARM SERVICE PROGRAM
INCLUDING

- RED ROSE Dairy, Beef, Poultry, Swine and Pet Food Needs.
- AGRICO Fertilizers and Farm Chemicals
- FARM SEEDS including WL305 Alfalfa, Northrup King and Pioneer Seed Corn.

ALSO: A COMPLETE SELECTION OF HOME, FARM AND GARDEN NEEDS.
GRAIN STORAGE AND MARKETING SERVICE AVAILABLE.
FOR COMPLETE COURTEOUS SERVICE GIVE USA CALL.



RED ROSE FARM SERVICE

N. Church St.
Quarryville, Pa.
786-7361

Buck, Pa.
284-4464