

Sale Register

(Continued From Page 35)
Bethel RD1, Pa. John E. and Paul

E. Martin, Auctioneers.

WED. EVE. AUG. 29 - 6:30 Sharp
Public Sale of Household Items
and Antiques located near

FARM FOR SALE

Located in Pillow Pa.

136 ACRES, approx. 100 acres clear,

balance in Woodland

9-ROOM FRAME DWELLING with Automatic Oil-Fired Hot Water Heat, Bathroom, & other conveniences. LARGE BANK BARN equipped for Beef & Hogs with Automatic Bulk Feeder, 2 Concrete Silos, 1 10 x 50 ft.; John Deere Silo Unloader, used 2 season; Large 40 x 140-ft. Warehouse, designed for Bulk & Bag Fertilizer Storage; also, 20-ft. Drive-On Scale under roof, Loading Dock & Office, Six 16-ft. and 18 x 60 Concrete Grain Silo with Aeration System, M.C. Model 600B L.P. Gas-Fired Continuous Flow Grain Dryer with 60-ft. Cardinal Bucket Elevator and all other necessary Elevators for the complete Grain Drying Operation, also, Two 1,000-bu. Metal Grain Bins with Unloading Augers, Large 3-Story 32 x 80 Block Chicken House with Heated Work Shop on first floor, Machinery Sheds and other Outbuildings. The above listed will be offered as a complete working unit, making this an opportunity for Beef Cattle, Hog & Grain Operation. FARMLAND is in high state of cultivation, suitable for irrigation if needed, as it borders along the Mahantango Creek. More than ample Water Supply for dwelling and other buildings from Deep Well and Spring.

Price ~~\$152,000.00~~
\$153,000.00

Lloyd J. Wenger - 717-866-2138 days
717-933-8692 nights

Christiana. Travel out W. Broad St. about 3/4 mile, watch for arrow at MYERS LANE. Sale by Frank W. Myers, Diller and Kreider, Auctioneers.

SAT. SEPT. 1 - 10 A.M. Public Sale of Real Estate, Farm Machinery, Purebred Hogs, Growing Corn, Feed, Hay, Straw, Household Goods and Antiques. Located approx. 1 1/2 miles west off old Rt. 111 (Susquehanna Trail), turning at Albrights Trailer Court, along Glen Valley Rd., only minutes from Exit 2 (Glen Rock Exit) of Rt. 83 Expressway in Shrewsbury Twp., York Co., Pa. Watch for arrow leading to sale. Terms by Mr. & Mrs. Richard Boyd, Glen Rock, RD1, Pa.; Robert L. Sechrist, Auctioneer.

SAT. SEPT. 2 - 9:30 A.M. EDST Public Sale of Real Estate and Household Goods located along Rte. 322 in Hinkletown. Large lot with 3 buildings. 2 1/2 story frame dwelling, 1 1/2 story frame dwelling, 2 story frame barn with 3 car garage. Terms by Aaron and Anna Horst; Robert E. Martin and Frank L. Steller, Auctioneers; Wentz and Weaver, attys.

FRI. SEPT. 7 - 11:00 A.M. 108 Registered Guernseys in the Onahill Farm Complete Dispersal at the farm - Bordentown, New Jersey. Sale by Wm. Von Thaden, owner, Bordentown, New Jersey. Sale managed by The Merryman Company, Sparks, Maryland.

THURS. SEPT. 13 - 10 A.M. Public Sale of Farm Equipment, Household Goods, and Antiques located at 1902 Millport Road, 1/4 mile South of Rte. 30, turn on Strasburg Road. Terms by Harry H. Nissley and Reba B. Nissley; Frank L. Steller and Robert E. Martin, Auctioneers.

SAT. SEPT. 15 - 2 P.M. Raymond P. Gible Estate valuable 114 acre limestone farm, beautiful all limestone 12 room farm house located in Heidelberg Twp. along Rte. 897, 1 mile west of Schaeferstown, Pa. Mark W. Heisey, Auctioneer.

SAT. OCT. 6 - 2 P.M. Public Sale of Valuable Limestone Farm of 104 acres and 52 Perches, Macadam Road frontage on two

sides. Sale by Mrs. Paul M. Binner, located in South Lebanon Twp., Lebanon Co. along Corn-wall to Schaefferstown Road, Route 419, 1 mile west of Alcoa Plant. Mark W. Heisey, Auctioneer.

RAYMOND SNOW CATTLE & MACHINERY DISPERSAL

The following personal property & livestock will be offered for sale at public auction, located on the Thompson-Gelatt Road 3 Mi. S. of Thompson, Pa. 3 Mi. N. Gelatt, Pa. and 2 Mi. E. of Jackson, Pa. Watch for Dayton Auction Arrows.

SAT., AUG. 18, 1973 10:30 A.M.
38 Holsteins 28

This year around herd consists of 23 Milch Cows - 5 Recently fresh, 10 due this fall, and 9 Winter & Spring 4 bred heifers, 6 open heifers, and 5 started calves. These animals are of good size and Mr. Snow has been breeding with Eastern & ABS services since 1956. All T.B. & Blood Tested, and interstate charts will be available day of sale.

MACHINERY: 3 TRACTORS 3

A.C. D17, (2) A.C. WD One wide front end and one with bucket, A.C. Baler No. 303 with kicker, A.C. Hay Conditioner, A.C. 7' mower, J.D. No. 480 9' Hay Bine, N.H. Rollbar Side Del. Rake, (4) 4 wheel wagons, one with high racks, A.C. 11 Hoe Grain Drill, A.C. 2 Row Corn Planter, (2) A.C. Field Choppers with Corn & Grass Heads, A.C. Blower with pipe, 85" OMC Mow conveyer system with 3 HP Motor, A.C. 3B Plows, 130 Bu. NH Spreader (like new), NH Barn Clearner with 230' Chain, Gehl Power Unit, 12' Pittsburg Harrow, Lime Spreader, 2 Wheel Trailer, Air Compressor, Vent-o-Matic Barn Fan

14' x 40' Concrete Stave Silo & App. 30' Grass Silage

Jamesway 425 Gal. Bulk Tank (like new), Strainers, Milk Pails, 6 Unit Surge Milker Pump, 4 Surge Units, Wash Vats, Elec. 60 Gal. Water Heater, Space Heater, Metal Cabinet, Shovels, Fords, 36' Ext. Ladder (wood), Feed Cart, Cow Clippers Etc.

AUCTIONEER:

Watson Dayton
R.D.5, Montrose, Pa. 18801
934-2309

Lunch

Tent

Raymond Snow
R.D.1, Thompson, Pa.

CALL Elmer Beiler



**BUY A CADET TRACTOR
and Take advantage of
our Everyday Low Prices**

**Some Last Year Models
Available**

CALL Leroy Zook

WEAVERLINE FEED CARTS

EARLY DISCOUNT on Lancaster Silo and Unloaders. Ryder Barn Equipment

Call Bob & Les

USED EQUIPMENT

Farmall 460 G Tractor
Farmall Super M Tractor
A & C Cultivators
Farmall 400 Tractor
New SP International Combines
J. D. Fertilizer Spreader
Grimm Hay Tedder
816 Mower Conditioner \$1,000.00
5 ft. Rotary cutter tow type \$375.00
234 Corn Picker
700 - 6 Bottom Plow
I.H. 470 Disc Harrow with Wings
540 4-Bottom Plow
New Idea Uni-System Model 702 Power Unit with V6 engine 18.4 x 26 tires and combine attachment.
Ask Us For a Demonstration on a 990 Mower-Conditioner

PARTS DEPARTMENT

CALL Dick Bomberger

CALL US! IT COULD BE WE HAVE IT.

Genuine I.H. Baler & Binder Twine

Starbar Simax
Dairy and Beef Cattle Dust
\$3.40 per Bag

CHECK YOUR

**INTERNATIONAL CORN
HARVESTER SUPPLIES NOW**

Good Inventory on Hand

CALL Titus Burkholder

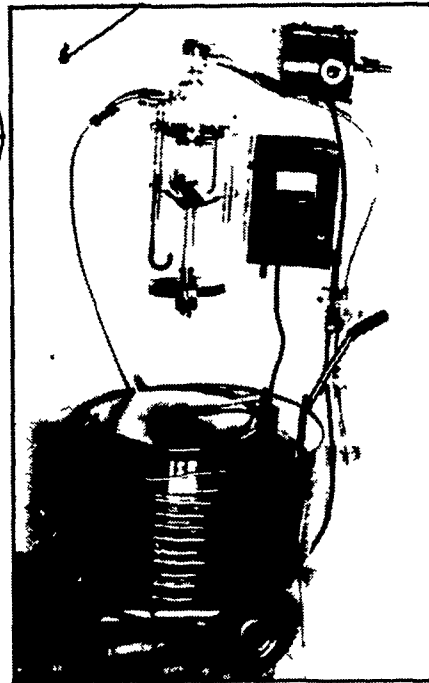
FOR SALES—SERVICE—PARTS



ELIMINATE
EXTRA HELP

GET FASTER
MILKING

INCREASE
PRODUCTION



Model JRT Milkmoover Cylindrical releaser jar for use with 100'-5/8" plastic tubing. Milk moving capacity of ~900 pounds per-hour. Vacuum consumption less than ICFM.

FOR COMPLETE DETAILS CALL TITUS
USED BULK TANKS

D2 1000 gal. Girton	350 gal. Esco
D2 500 gal. Girton	500 gal. Mueller
500 gal. Esco	545 gal. Sun Set.

USED DIESELS

6-1 Lister 6 H.P. Slow Speed Radiator Cooled
8 H.P. Faryman with Electric Start
AXA Petter Air Cooled 12 H.P. Completely Reconditioned
SR2 Lister Air Cooled 12 H.P. Reconditioned
HR2 Lister with Haas Clutch 25 H.P. Electric Start
AVA1 Petter Air Cooled 5 H.P. Good Condition



C. B. HOOBER & SON

INTERCOURSE, PENNA.

PHONE 768-8231

RADIO CONTROLLED FOR BETTER SERVICE