

Penn State Site for Horse Field Day Aug. 11

A new event for Horse Owners, Horse Field Day, will be held at Penn State beginning at 10 a.m. Saturday, August 11.

The itinerary for the day includes:

10 a.m., Horse Selection; 10:30, The Sound Horse; 11 a.m., Judging (2 classes); 1 p.m., Horse Identification; 1:30 p.m., Grooming and Halter Showmanship, Arabians and Quarter Horse; 2 p.m., Training.

Site for the day's activities is near the "Old Horse Barn" adjacent to the Football Stadium.

Participating in the program are Pat Faity, Pocono Farms, Inc., Mt. Pocono; Wayne Hipsley, field secretary, Arabian Horse Registry Ass'n, Englewood, Colo.; Everett Shea Jr., Windfall Arabians, St. Marys; and from Penn State University - Jame P. Gallagher, J. F. Kavanaugh, Tom Merritt, and W. W. Studebaker Jr.



Harry E. Maclay

Pa. Broiler Up 13 pct. Maclay Named

NAMA Public Relations Head

Placements of broiler chicks in the Commonwealth during the week ending July 21, 1973 were 1,177,000. The placements were 13 percent above the corresponding week a year earlier, and 12 percent below the previous week. Average placements during the past 10 weeks were 10 percent above a year earlier.

Settings for broiler chicks were 2,174,000 - 6 percent above the previous week and 17 percent above the comparable period a year earlier. The current 3-week total of eggs set is 12 percent

above the same period a year ago.

Inshipments of broiler-type chicks during the past 10 weeks averaged 1,000 compared with 51,000 a year ago. Outshipments averaged 300,000 during the past 10 weeks, 12 percent above a year earlier.

Placements in the 21 States were 55,139,000 - 3 percent above the previous week and 7 percent below the same week a year earlier. Average placements during the past 10 weeks were 3 percent below a year ago.

Harry E. Maclay, 100 North Custer Avenue, New Holland, public relations manager for Sperry New Holland has been named public relations chairman for the National Agri-marketing Association. (NAMA)

NAMA is a national organization of leading corporations that produce and market products for farmers.

During his year-long assignment, Maclay will head a committee which will promote the image and interests of the NAMA group as well as further the public understanding of agribusiness and the occupation of farming.

Maclay, a native of Belleville, Pennsylvania, has been a member of the Sperry New Holland communications and promotions department since coming to the company in 1956.

Settings were 72,792,000 - 2 percent above the previous week and 3 percent below a year earlier. The current 3-week total of eggs set is 5 percent below and comparable period a year ago.

Help Us Serve You

Don't assume we know about your farm organization's meeting. To get your meeting on our Farm Calendar, it's safer to assume we don't know.

Remind us by calling 394-3047 or 626-2191 or by writing to Lancaster Farming, 22 E. Main St., Lititz, Pa. 17543. You'll be helping us to serve you better.

P.S. - If you're not sure you told us already, we don't mind hearing from you again.

PREMIERE SHOWING of the

1973 MUSICAL VERSION

of

"TOM SAWYER"

ALL PROCEEDS TO 4-H

Wednesday, August 1, 1973

ERIC THEATER, LANCASTER

TIME: Evening Show

COST: \$2.50 for adults

\$1.00 for children under 12

- GOLDEN MARLIN FLY BAIT
- FLY SPRAYS 5-30-50 gallon lots
- ELECTRIC FOGGERS
- FLY & LICE DUST KITS
- POR-A-STOOL

Also Batteries and Electric Fencers

--- Special Prices on ---

- Penstrep and Combiotic Injectables
- Furox Dispension

AARON S. GROFF

Farm & Dairy Store

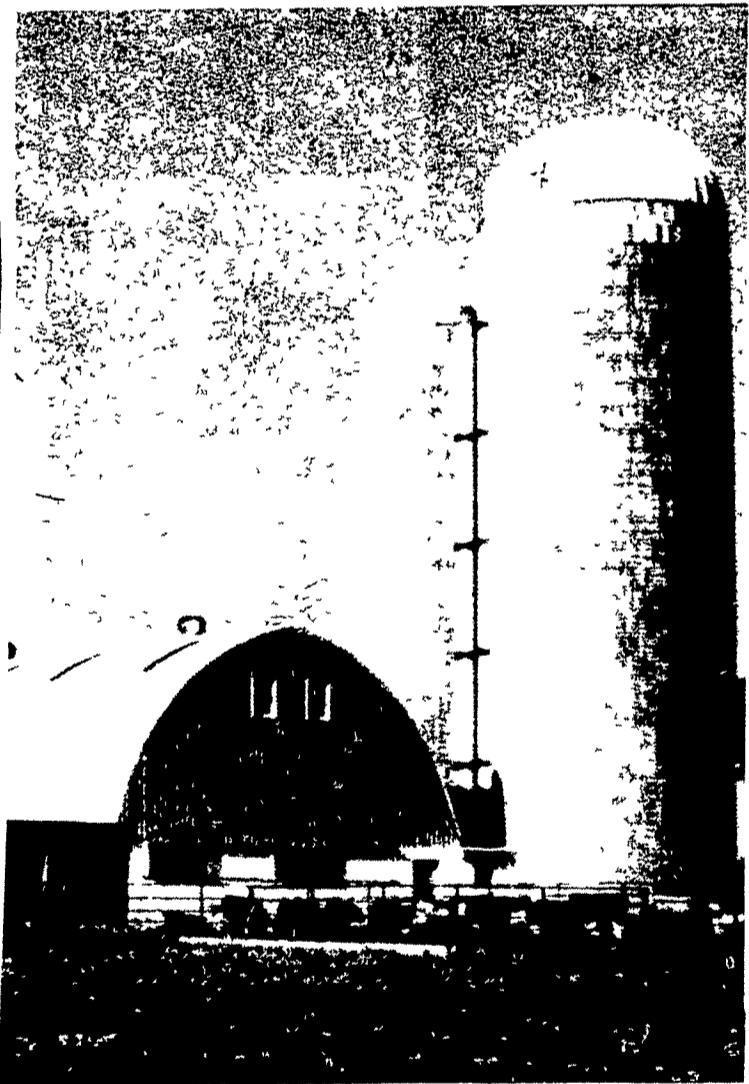
R D 1, Ephrata, Pa 17542 (Hinkletown)

Phone 354-0744

Store Hours 7 A.M. to 9 P.M.

Closed Tues. & Sat. at 5:30 P.M.

TERRE HILL SILOS



DO YOU NEED A SILO?

The TRI RIB STAVE SILO gives you more where it is needed.

SUPERIOR INTERIOR FINISHES

Write or Call NOW AND SAVE
Free Information and Prices on

SILOS — BUNK FEEDER TROUGHS

SILO UNLOADERS

TERRE HILL SILO CO., INC.

Terre Hill, Penna. 17581

Phone: (215) 445-6736

Quality and Service Since 1927
ASK THE MAN WHO OWNS ONE

LIMING PAYS and BAKER'S

AG * LIMESTONE

pays off
best!

Liming pays off in healthier soil, better crops, stronger and more productive animals. In fact, it has been estimated that each \$1 invested in limestone returns from \$3 to \$10 in bigger and better yields.

Baker's agricultural limestone is your best choice because you can use the type that best fits the needs of your land. Choose high calcium to sweeten acid soil, raise pH and unlock vital plant nutrients. Use high magnesium to do all those jobs plus adding vital magnesium. Both types prepare your land to make full use of the fertilizers you apply. Call your dealer or Baker.

	Calcium Oxide	Magnesium Oxide
Conestoga Valley Hy Cal limestone from our Ephrata quarry	53.5%	5%
Prime Lime dolomite limestone from our Gap quarry	30%	20%
Hy Mag limestone from our Paradise quarry	30%	20%

LANCASTER BONE FERTILIZER

Quarryville - 786-2547

CHEM GRO FERTILIZER

East Petersburg - 569-3296

GEHMAN FEED MILL

Denver - 267-5585

HEISTAND BROS

Elizabethtown - 367-1504

HENRY B. HOOVER

Ephrata - 733-6593

POWL'S FEED SERVICE

Peach Bottom - 548-2376

Products of The J. E. Baker Co.

Call collect—(717) 354-4202

