

beating until light and fluffy. Add melted chocolate and blend well. Sift together dry ingredients and add alternately with water to chocolate mixture. Pour batter into three 8-inch layer pans which have been greased and lined with waxed paper. Bake in moderate oven at 350 degrees 30 to 35 minutes.

Fudge Frosting

2 cups sugar
1 cup light cream
2 (1-ounce) squares unsweetened chocolate, grated

Combine all ingredients in a heavy saucepan. Boil over high heat three minutes without stirring. Reduce heat and continue cooking until it reaches soft ball stage (238 degrees). Cool. Beat until creamy and of spreading consistency. Add cream if too thick.

Barbara Ann Stoltzfus
RD2
Narvon

XXXX
Pecan Pie
9-inch unbaked pie shell

3 eggs
2-3 cup granulated sugar
1-3 teaspoon salt
1-3 cup butter
1 cup dark corn syrup
1 cup pecan halves
Beat together all ingredients except pecans with a rotary beater until well mixed. Stir in pecan halves. Pour into unbaked pie shell and bake at 350 degrees until set and browned. Time varies between 50 - 75 minutes depending upon the quality of pecans used and the amount of beating.

—Serve best at room temperature, plain or a la mode.

Mrs. Ira Davis
RT1
Quarryville

XXXX
White Chiffon Cake

2½ cups flour
2 cups sugar
3 teaspoons baking powder
A little salt

Make a hole in the flour, then add ½ cup oil, 5 egg yolks and ¾ cup cold water. Beat till smooth. Then take 1 cup egg whites and 1 teaspoon cream of tartar. Beat till it stands in peaks. Add egg mixture. Bake 55 minutes.

(Miss Burkholder suggests if you have no oil, use water instead.)

Miss Ella Mae Burkholder
RD2
New Holland

XXXX
Banana Nut Cake

2½ cups flour
1 2-3 cups granulated sugar
2-3 cups shortening
1¼ teaspoons baking powder

1 teaspoon soda
1 teaspoon salt
3 mashed bananas
2-3 cup buttermilk or thick milk
2 large eggs
2-3 cup chopped nuts.

Stir shortening; add sugar, baking powder, buttermilk and bananas. Beat. Put in flour, soda and salt. Beat two minutes. Add eggs, beat. Last fold in chopped nuts.

Bake at 350 degrees for 30 to 35 minutes.

"This is a moist cake."
Mrs Harvey Reiff
RD1
Leola

XXXX
Wacky Cake

Mix in loaf pan:
3 cups flour
2 cups granulated sugar
2-3 cup cocoa
½ teaspoon salt
2 teaspoons baking soda

Then add and mix:
1 cup cold coffee
1 cup water
2-3 cup cooking oil
2 teaspoons vinegar
1 teaspoon vanilla
Bake at 350 degrees about 30 to 35 minutes.

Miss Mary Hoover
RD1
Denver

County Council Plans Sub Sale

The 4-H County Council held its July meeting at the Black and White Holstein Farm on July 11 at 7:30 p.m. The 4-H Michigan exchange guests attended with their hosts.

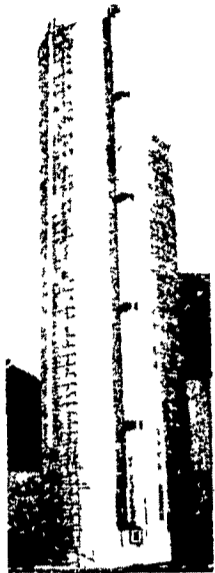
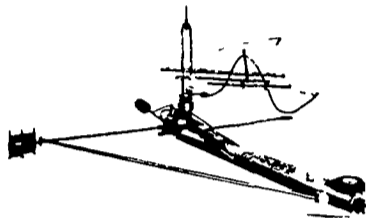
It was decided that to raise money the 4-H County Council will have a sub-sale on August 11. A report was given on the State Leadership School at Penn State

Following the meeting, several members performed a skit. Then everyone participated in a Square Dance called by Bert Wittenberg.

Judy Risser,
Secretary

BEFORE YOU BUY ANY SILO OR SILO EQUIPMENT....

- + Starline Unloaders
- + Auto. Belt Feeders
- + New Roller Mills
- + Used Jamesway 24 ft. unloader
- + Used Jamesway 20 ft. unloader
- + Starline Water Bowls
- + All types of conveying systems
- + New round hay racks

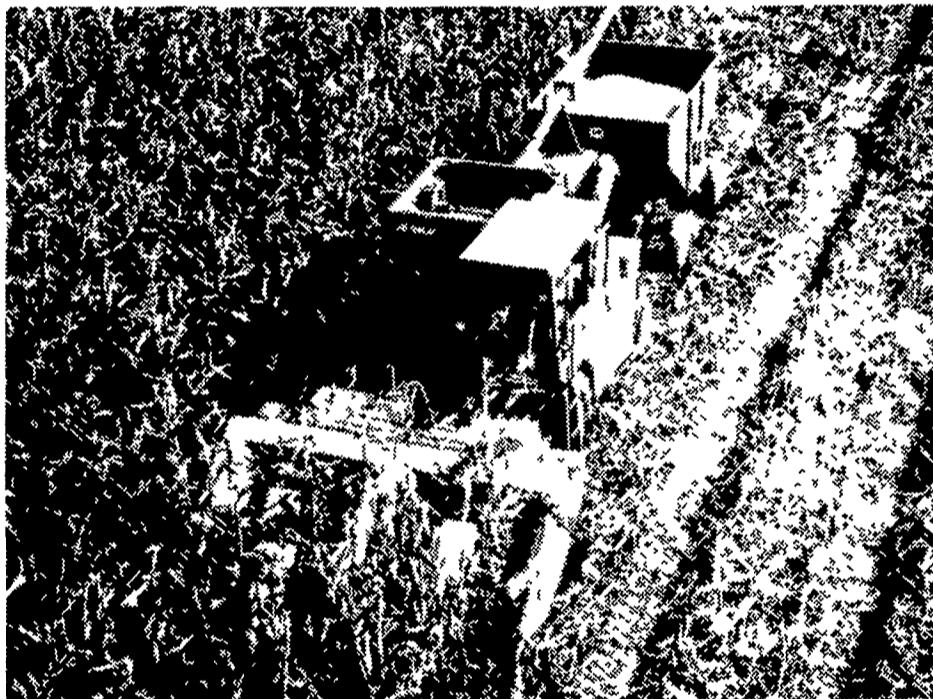


We Service What We Sell

LANCASTER SILO CO., INC.

2436 Creek Hill Road or
2008 Horseshoe Road, Lancaster, Pa.

New Idea's Uni-Combine



Uni-Combine.

rugged simplicity that gets the job done.

When you're shelling corn, the heavier the cylinder/concave, the better. Uni's heavy 36" cylinder was designed to handle those hard ears with ease. With good flywheel action. Resists distortion at high speeds. Handles 2-, 3-, or 4-row cornheads and lets you harvest wide or narrow rows.

Optional Uni Bin-Stretcher transfer auger moves grain from the grain

tank to a trailing wagon. As you move through the field you can shell in ½-mile long fields without stopping to unload.

Uni-System is the system of self-propelled harvesters—each one carried and powered by the one interchangeable Power Unit.

And the Uni-Combine is one reason why we say



Just plain makes more sense!

A. L. HERR & BRO.
Quarryville

KINZER EQUIP. CO.
Kinzer

LONGENECKER
FARM SUPPLY
Rheems

CHAS. J. McCOMSEY
& SONS
Hickory Hill, Pa.

LANDIS BROS., INC.
Lancaster

ROY H. BUCH, INC.
Ephrata, R.D.2

N.G. HERSHEY & SON
Manheim

STOLTZFUS
FARM SERVICE
Cochranville, Pa.

Penn Willow 4-H Holds Splash Party

The Penn Willow 4-H Club held its monthly meeting July 13, 1973 at the Conestoga Community Pool. The meeting was called to order by President Greg Martin. Brenda Huntzinger led the club in the 4-H Pledge and Pledge of Allegiance. Pat Gilner had roll call and the minutes of the last meeting were read. Kathy Huber then gave the treasurer's report which was followed by new business on upcoming events. Joan Huber gave comments on Dress Revue and Margot Martin gave comments about the local Round Up for sewing and cooking which will be held on August 6, 1973.

Pat Gilner and Kathy Huber will represent Penn Willow 4-H in the running of Lancaster County 4-H Club Queen contest.

Pat Gilner will represent the Club as Jr. Queen. Pat is the daughter of Mr. & Mrs. William Gilner of Main Street, Conestoga. Pat has been in 4-H 3 years and has taken 3 years of sewing, 3 years of cooking and Jr. Leadership.

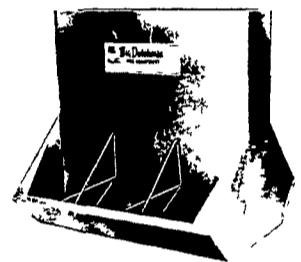
Kathy Huber will represent the Club as Sr. Queen. Kathy is the daughter of Mr. and Mrs. Wayne Huber of Conestoga, RD2. Kathy has been in 4-H 4 years and has taken 4 years of Cooking, 3 years of Sewing and Jr. Leadership.

Following the meeting the club could swim or listen to a local rock group called Cotton. Refreshments were then served.

The next monthly meeting of the Penn Willow 4-H Club will be held August 10, 1973 which will be a field trip to Hershey Park.

News Reporter,
Ronald Walton

Controlled HOG confinement Systems



Big Dutchman offers you the professional hog producer COMPLETE FACILITIES

We provide all systems that make up a confinement operation (unlike any of our competitors) therefore we are able to guarantee you reliability control cost savings and one source service.

Contact us for personalized information and service concerning

- Aluminum Slat Flooring
- Farrowing Units
- Finishing Systems
- Gestation Stalls
- Nursery Systems
- Feeding Systems

HERSHEY EQUIPMENT CO.

215 Diller Ave
New Holland, Pa

Ph. (717) 354-5168

OR

(717) 872-5111

AUTHORIZED

Big Dutchman.

DISTRIBUTOR

CUSTOM TRUCK BODIES

for hauling

Cattle & Horses

D. K. HOSTETLER, INC.

BELLEVILLE, PENNA. 17004

PHONE 717-935-2151