

# Farm Women Societies

## Society 6

Farm Women Society 6 voted to give \$75 to the County Project at their monthly meeting on July 7 at the home of Margaret Haines, 212 Highlawn Ave., Elizabethtown.

The group also heard Nancy Tischler, a professor from Capitol Campus, Middletown speak on "Pilgrim's Progress". It was announced that the Homemaker's Camp will be held

Aug. 26-28 at Camp Swatara.

The next meeting will be at 6 p.m. August 4 at the Milton Grove Sportsmen's Club. It will be a covered dish picnic.

## Society 11

Farm Women Society 11 held its regular monthly meeting in the Social room at Octorara Presbyterian Church.

In the morning the ladies were permitted a tour of the Shrine Church with Rev. Tanguay

directing after which he gave a history of the founding of the church in the 17th century.

In each of the cemeteries around the two churches are graves with special engravings marking the names and founders of days gone by.

After a delightful box lunch at noon in the dining room of the main church, the business meeting was called to order by the president, Mrs. Ammon Huber. The group participated in Bible reading, Prayer, and the Salute to the Flag after which a hymn, very suitable to the place, "Faith of Our Fathers" was sung.

Mrs. Huber called attention to some things of interest coming up in the summer months. Each member answered roll call by telling of some history connected with the neighborhood in and around Quarryville.

Many pictures were on display. The next meeting will be at the

home of Mrs. Helen Wagner in Quarryville.

## Society 27

Farm Women Society 27 held a family covered dish picnic at noon on June 24 on the farm of Mr. and Mrs. Galen Benner. There were 20 members present, and with husbands and children 82 attended.

It was announced that the picnic for the County Farm Women will be August 1 at the Central Manor Camp Grounds.

The next meeting will be a luncheon at the Candle Glo Restaurant in Palmyra at 12:00 on July 24, followed by a tour of Hershey Medical Center and Founders Hall at Hershey.

## Society 30

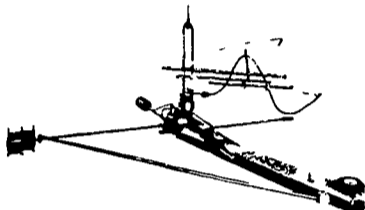
Farm Women Society 30 will hold its next meeting July 17 with a picnic at Hershey Park. Members are to pack a picnic lunch and meet at the entrance of the park at 10:30 a.m.

The next family picnic will be held at 6:30 p.m. Aug. 20, at the home of Mrs. Carl Weaver, New Holland RD1. Participants should bring a covered dish, place settings and lawn chairs.

The volume of food eaten, per person, in the United States, is expected to hit a record high in 1973, up seven per cent from 10 years ago.

## BEFORE YOU BUY ANY SILO OR SILO EQUIPMENT....

- + Starline Unloaders
- + Auto. Belt Feeders
- + New Roller Mills
- + Used Jamesway 24 ft. unloader
- + Used Jamesway 20 ft. unloader
- + Starline Water Bowls
- + All types of conveying systems
- + New round hay racks

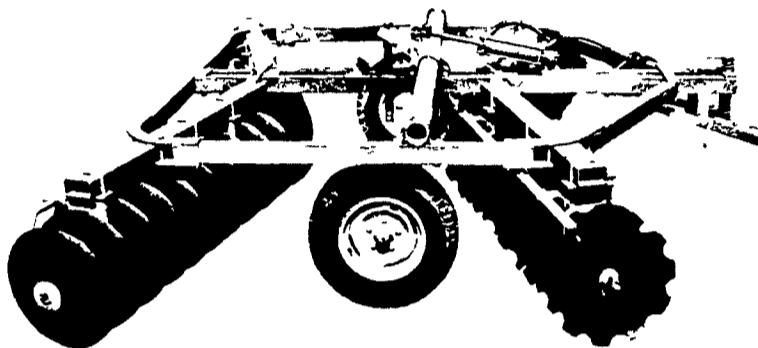


We Service What We Sell

## LANCASTER SILO CO., INC.

2436 Creek Hill Road or  
2008 Horseshoe Road, Lancaster, Pa.

## WHEEL DISC



Farm Tools Division

**PITTSBURGH**

5 Ft. to 12 ft. Models

## Binkley & Hurst Bros.

Lititz RD4, Pa.

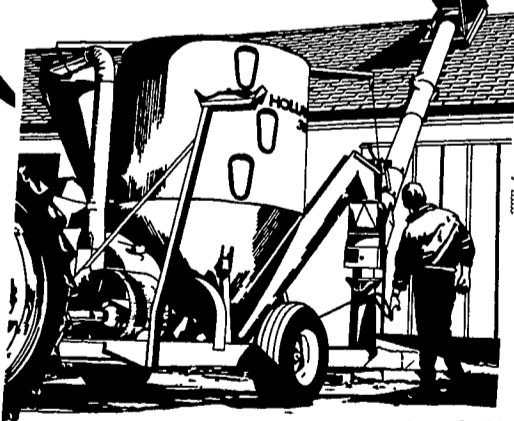
Ph. 626-4705

On Rothsville Station Road

SPEERRY NEW HOLLAND

**Offers Fast Unloading... Long Reach!**  
In a Complete Line of **GRINDER-MIXERS!**

80/100/120 BUSHELS



MODELS 357/354/352

**Get The Job Done Fast**

Get a load of this! This is the grinder-mixer that does it all. You have your choice of three models to fit your operation. Each has an advanced unloading system featuring hi-speed, 8-inch diameter, fold-back unloading augers in your choice of 13-, 17-, or 20-ft. lengths to give you that long reach! For transport they swing back to a neat 10-feet. See them today at...

Free Finance Till Oct. 1, 1973

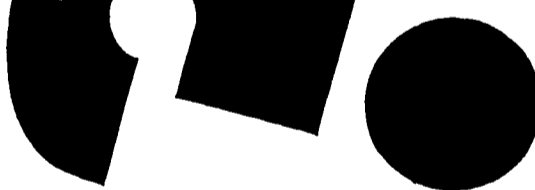
**Roy A. Brubaker**  
700 Woodcrest Ave.  
Lititz, Pa.  
Tel. 626-7766

**L. H. Brubaker**  
350 Strasburg Pike  
Lancaster  
397-5179

**C. E. Wiley & Son, Inc.**  
101 S. Lime St., Quarryville  
786-2895

**A.B.C. Groff, Inc.**  
110 S. Railroad Ave.  
New Holland  
354-4191

**ARE HIGH SUPPLEMENT PRICES GETTING YOU DOWN**



Switch to Mol-Mix liquid supplements. . .the money-saving way to insure maximum feed efficiency. Puts low-cost gains on your beef cattle and sheep, gets top production from your dairy herd.

Mol-Mix is a cane molasses-based supplement . . . a powerhouse of energy, protein, vitamins, and trace minerals. . . all in liquid form for quicker digestion and use. Mol-Mix is easier to handle, too. . . saves you trouble, time, and labor costs.

**NOW FORTIFIED**

with a new combination of power-packed ingredients.

**Distillers Solubles Phosphoric Acid  
Condensed Fermented Corn Extractives  
Ammonium Polyphosphate**

Join the crowd. Join the trend. Join the growing number of satisfied Mol-Mix customers.  
For more information see us today.

## JOHN Z. MARTIN

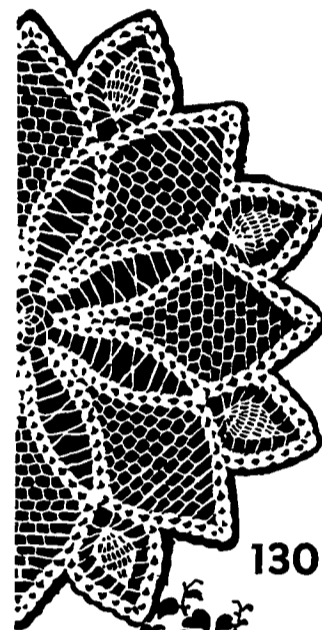
New Holland R#1

Phone 717-354-5848

**Mol-Mix**  
liquid supplements

the liquid leader

## Needle Arts By NANCY SEWELL



130

### Cobweb Lace

Lovely flower centerpiece in cobweb lace. Use snow-white cotton for a cool-look. No. 130 has full crochet directions.

TO ORDER, send 60¢ for each pattern with name, address with Zip code and pattern number to **NEEDLE ARTS**, P.O. Box 5251, Chicago, Ill. 60680.

## BACKHOES and Payloaders FOR SALE

Cat 922B Loader  
Terex Articulated loader  
Michigan 125 Payloader  
Case W9 payloader  
Lorain payloader  
(3) Case 1537 Unloaders  
(2) Case 1530 Unloaders  
Melroe 600 bobcat  
(3) Melroe 500 bobcats  
Owattona Mustang  
Universal Unloader  
Case 580CK loader  
Backhoe (150 hours)  
3-Case 580CK loader Backhoe  
2-Case 530 CK loader Backhoe  
Case 680CK loader  
Ford 4500 loader Backhoe  
Ford 3400 loader Backhoe  
Case 420 loader backhoe  
3 Huber Maintainers

MORE ARRIVING DAILY

## WENGER'S FARM MACHINERY, INC.

So. Race St.  
Myerstown, Pa.  
Ph. 717-866-2138