

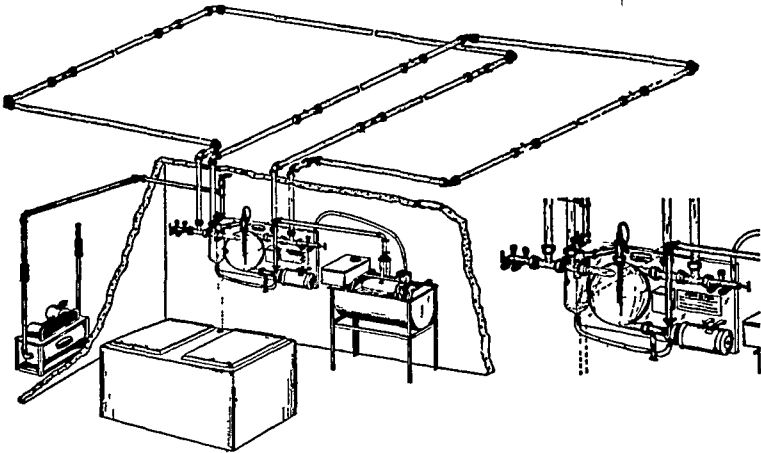
# AGWAY

## STA-RITE Can Put A Pipeline In Any Barn WHY BUY A PIPELINE?

For An Average  
40 Cow Herd

You Can . . .

1. Save walking 100 miles a year.
2. Save carrying 292 tons of milk a year.
3. Save 200 hours per year on an average herd.
4. Produce higher quality milk.
5. Increase your milk production.



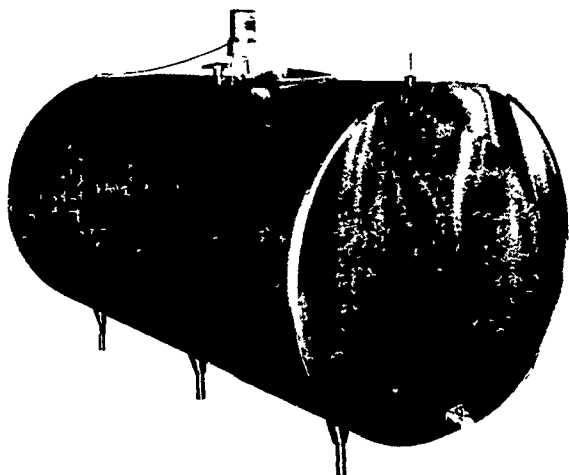
### WHY BUY A STA-RITE PIPELINE?

1. Engineered for the modern dairy farm of today as well as the dairy farm of tomorrow. Around the barn pipelines and milking parlors.
2. The only milkhouse control unit that is assembled at our modern new factory on a stainless steel panel. Pretested for trouble free operation, self-draining with patented washing features.
3. Built and guaranteed by Sta-Rite Industries, Inc., of Delavan, Wisconsin, a recognized leader in home water systems and agricultural components.

- 24 Hour Milking Equipment Service
- Installation and Service

CALL TODAY AND ASK FOR AN APPOINTMENT

### MOVE UP TO THE NEW SUNSET "SPACE SAVER"



Move up in convenience as you add capacity. The "SPACE SAVER'S" shape, with its single positive-closing cover makes it ideal for automatic Sunset Spin-Clean washing. It's easier, more thorough, more economical, with no overspray.

The Latest Development in  
Stainless Steel Milk Coolers  
for the Expanding Dairyman.

Move up in capacity without adding space. This efficient atmospheric cooler with the modern, elliptical shape gives up to 50 per cent more capacity in the same floor space.

Move up in versatility. "SPACE SAVERS" are "Advanced Evaporator" models which can be installed with one or two compressors, controlled from a dual refrigeration system. These "AE" designed coolers permit buying for your present production needs and allow future expansion at lowest cost.

Four "SPACE SAVER" sizes: 600, 800, 1,000 and 1,500 gallons.

**10% Discount**

on 1,000 & 1250 Gal. Tanks in Stock



## SUPPLY CENTER

1027 DILLERVILLE ROAD, LANCASTER  
24 HOUR SERVICE DAILY PH: 717-397-4761

NOW OPEN FRIDAY NIGHTS 'TIL 9 P.M.

## County Council To Meet

The Lancaster 4-H County Council met recently at the Farm and Home Center. Newly-elected officers of the organization are: Mike Peiffer, Manheim, and Anne Spangler, Marietta, Co-presidents; Robin Fellenbaum, Lancaster, recording secretary; Judy Risser, Leola, corresponding secretary; Darryl Bollinger, Manheim, treasurer.

A film produced by a state 4-H member about National 4-H Congress, Chicago was viewed as part of the program. Council members participated in recreation activities for use at project meetings.

4-H County Council will meet regularly on the third Wednesday of each month. The next

scheduled meeting will be Wednesday, June 20th at 7:30 in the Farm and Home Center.

Judy Longenecker, a former 4-H'er and International Farm Youth Exchange delegate will discuss the IFYE program and her visit to England through a slide presentation.

Executive Committee members are reminded to meet at 7 p.m. in the Extension Office. The Michigan Interstate Exchange Committee will meet at 6:45 p.m. to finalize plans.

All 4-H County Council representatives are urged to attend. Each 4-H Club should have at least one representative present.

## "Bits And Bradoon" Club Chooses Name

The meeting of the Bits and Bradoon 4-H Club was called to order by Dana Norquist, president.

Roll call was said and dues were paid. The report of the secretary was read by Jenny Weber. Tim Stauffer, Club treasurer, reported \$3 in the treasury. The Club Pledge was recited.

The Club name was decided on. Out of seven names given, four were nominated. The votes, given by raising of hands, decided on

the name "Bits and Bradoon."

The grooming and showmanship horse show was discussed.

A show for the benefit of the Club will be held September 16 at Manor View Acres. The rain date is September 23.

Membership cards were passed out.

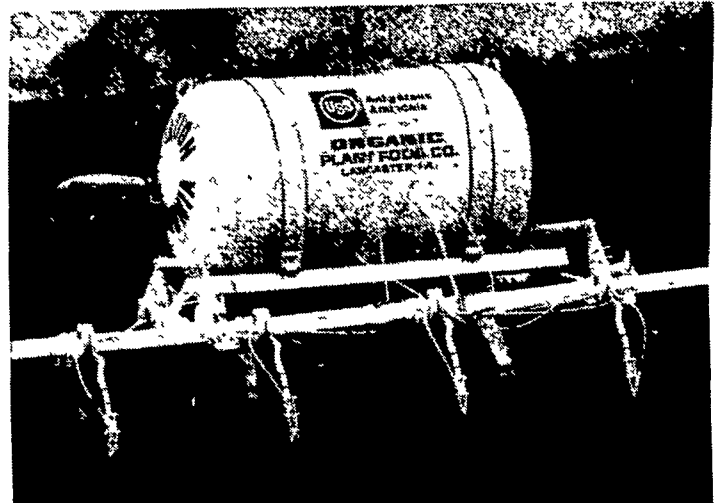
The next meeting will be held July 10 at the Tumble farm.

News Reporter  
Lesley Winpenny

### Fabric Care Labeling

Help for home sewers is provided by the Federal Trade Commission's regulation on care labeling. Mrs. Ruth Ann Wilson, Extension clothing specialist at The Pennsylvania State University, says this means that when making yardage selections, a permanent fabric care label for

each fabric and for as many garments you expect to sew should be included. Stitch the care label into completed garments and you have a built-in laundering guide. Mrs. Wilson reminds you to be sure to choose thread, trims and linings that conform to the same care as the fabric itself.



## SIDE DRESS CORN

UP TO 18 INCHES

If You Missed Your Nitrogen Early Ammonia can be applied Between the Rows With our Rental Equipment.

**TOP DRESS ALFALFA AFTER FIRST CUTTING.**

We offer a complete line of Insecticides and Weed Killers for corn and Alfalfa.



BULK BLENDS

**MASTER FARMER**

ANHYDROUS AMMONIA

**ORGANIC PLANT FOOD CO.**

2313 NORMAN ROAD  
LANCASTER, PA.

PH: 397-5152