

National Rural Development Leaders School Planned

A national rural development leaders school will be held Aug. 5-11 in Lincoln, Nebr., the U.S. Department of Agriculture announced today.

Purpose of the school is to provide rural development leaders an opportunity to improve their knowledge and skills and to study developmental strategies. There will be general sessions and small discussion and participation groups.

Eligible applicants include persons actively involved in rural development. The size of this first

session is limited to 120 students, who will be selected to represent a broad segment of rural America. More sessions are planned later, according to the Department's Rural Development Service, sponsor of the school.

The course is particularly suitable for people who are:

— Engaged in development in their rural communities as citizens, elected officials, or professionals.

— Developing and implementing comprehensive plans

on human, economic, and physical resources for rural communities.

— Interested in training and developing local rural leaders.

Faculty members will come from government, business, industry, education, and public interest groups.

Site of the school is the Nebraska Center for Continuing Education on the campus of the University of Nebraska.

Persons who wish to attend the school are invited to write the Rural Development Service, U.S. Department of Agriculture, Washington, D.C. 20250, or call (202) 447-2573 for more information.

My Neighbors



"But it's a lovely afternoon for an eight mile hike—up and down cleaning out the attic."

Set-Aside Date June 29

"Effective farm programs depend on quality of acreage set aside," said Fred G. Seldomridge, Lancaster County Agricultural Stabilization and Conservation Committee chairman.

Program participants are required to certify to set aside acreage quality and size by June 29, the chairman added. June 29 is the date by which participants state that they have complied and will continue to comply with all 1973 set-aside program requirements.

Set-aside quality should be equal to or better in productivity than the balance of the farm cropland.

Set-aside acreage size requirements are: Whole fields shall be designated as set aside. Field and contour strips are considered whole fields regardless of size. Parts of fields may be designated providing plots are a minimum of 5 acres and not less than 132 feet in width. Smaller areas may be designated when the area represents all required set aside for the farm or the balance of the required set aside.

Participants are permitted to hay, graze, green chop or make silage from eligible conserving

cover on set-aside acres in 1973. Program payments will be reduced by 30 percent on acres used under this option. Approval by the county ASC committee is required prior to using set aside for this purpose, chairman Fred G. Seldomridge cautioned.

Program payments are expected to be made in July. Proper certification and compliance with program provisions are necessary for earning full payment.

More Refineries Are Necessary to Meet Domestic Fuel Needs

"There is just not sufficient refining capacity in the U.S. to meet the total needs of the American public for petroleum products," the president of the American Petroleum Institute said recently to a Senate committee. "That is one of the basic reasons for the gasoline shortage."

Frank N. Ikard added that a contributing factor was the need for refineries to produce maximum volumes of home heating fuels last winter at the expense of gasoline output.

He said increased refining capacity requires construction of new refineries, "yet none is currently under construction in the U.S." He cited four major problems inhibiting the building of new refineries: Siting, complicated by environmental opposition, the sources and kinds of crude oil that can be run in refineries, petroleum product specifications, and the economics of refinery construction.

After 25 years of dramatic increases, both consumer and business bankruptcies declined in 1972 to the lowest levels since 1965.

Aerial Ladder Equipped

FARM PAINTING

We Spray it on and Brush It In!

FOR FREE ESTIMATES
CALL COLLECT 717-393-6530

OR WRITE
HENRY K. FISHER

2322 Old Phila. Pike
Lancaster, Pa. 17602

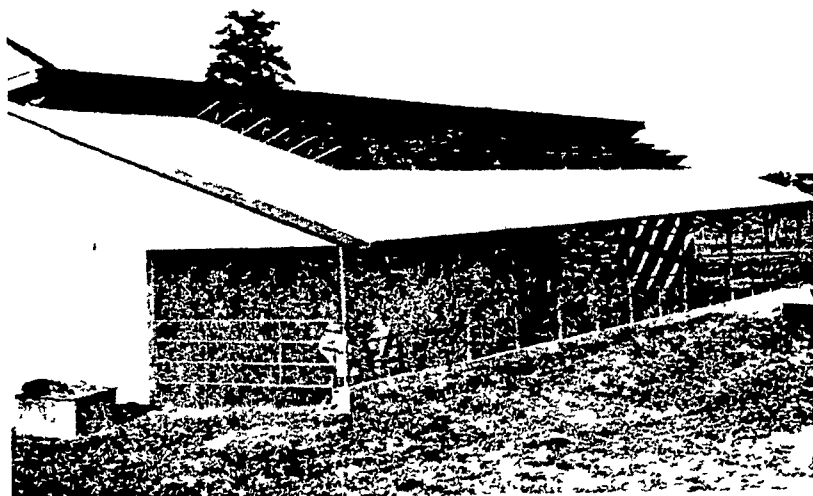
PUT YOURSELF INTO THE FUTURE!
LET THE SUNSHINE IN WITH...

SOLAIR SYSTEMS

SOLAIR COW BAY WITH THE "SUN SENSOR"

FEATURES THE FOLLOWING:

1. Storm-and fire-resistant construction.
2. Rapid evaporation and dehumidification through "solar thermo" circulation.
3. Engineered for expansion.
4. Designed for either beef or dairy cattle.
5. Straight line scrape areas.
6. "Quick dry" floor areas.
7. North side ventilation—summer only.
8. Three sided wall structure—open South.
9. "Jalousie type" Southern roof provides direct sun rays on 80 per cent of floor — OPTIONAL.
10. "Sun Sensor" control automatically opens and closes optional jalousie roof for maximum winter comfort.
11. Complete herd grouping accommodations.
12. Automated feed control.

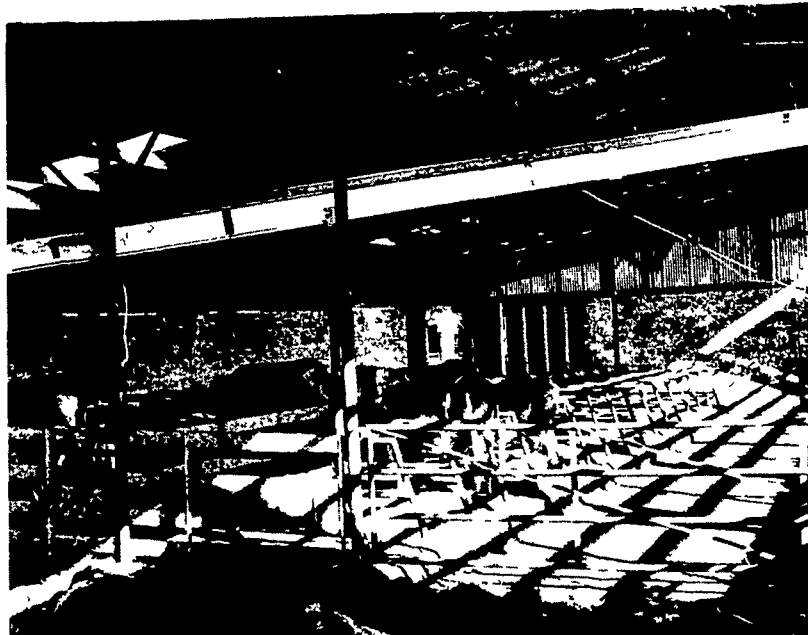


WE'RE INTERESTED IN ECOLOGY!

With our completely covered lots and a sun roof with an open peak, rain water does not enter the bay area and maximum evaporation of animal liquids is obtained. An "all-drained" floor system is installed and a curbed fence line keeps manure in place to be scraped into a liquid pit or a push-off loading system. By preventing manure run-off the surrounding area is not polluted.

Yes, since your urban neighbors and government fathers are interested in ecology, we are ready to help you build a system that will put you ahead on the pollution problem.

And, low moisture levels in Solair Systems results in less bacteria action and fewer odors.



DISTRIBUTORS FOR:

• VAN DALE, INC.

• VAUGHAN

• PAMLIN

• MADISON SILOS

• MECHANIZED FEED LOT SYSTEMS

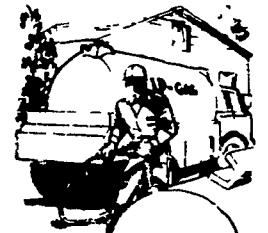
CALEB M. WENGER, INC.

R. D. 1 Drumore Center, Quarryville, Pa.

Phone 548-2116

DEPENDABLY
YOURS

**LOW PRICED
GAS**



**We Deliver
LP-Gas**

No matter where you live, you can count on us to service LP-Gas needs fast and efficiently.

AGWAY

LP-GAS

AGWAY
Petroleum Corporation
Box 1197 Dillerville Road
Lancaster, Pa.
Dist. 717-397-4954