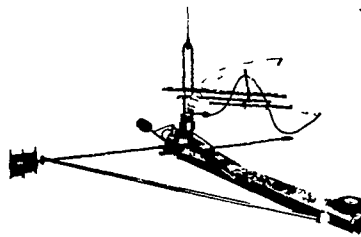
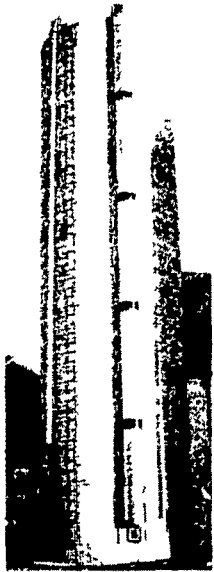


BEFORE YOU BUY ANY SILO OR SILO EQUIPMENT....

CHECK WITH YOUR LOCAL REPRESENTATIVE

- C. B. HOOBER
- JOHN KREIDER
- J. SAMUEL SHERER
- EUGENE HELLER

New and 1 demonstrator Starline roller-mills; used 24' rebuilt Jamesway Unloader and used 20' rebuilt Jamesway Unloader, both with 5 HP motors. We will install.



- ★ STARLINE UNLOADER
- ★ AUTOMATIC BELT FEEDERS
- ★ WE SERVICE WHAT WE SELL.

LANCASTER SILO CO., INC.

2436 Creek Hill Road or
2008 Horseshoe Road, Lancaster, Pa.

Get Your Plants Off To A Good Start

FOR BIGGER YIELDS ON Tomatoes & Tobacco

Add To Your Transplanter Water
ORTHO-GRO LIQUID FERTILIZER 8-16-8

Use one quart to 50 gal. barrel

ORTHO-GRO is a proven organic liquid fertilizer giving plants that extra push they need to "start," and protect them against transplanting shock.

5 gallon can . . . \$14.50

ISOTOX TRANSPLANTER SOLUTION



Use 4 ounces per 50 gal. barrel

ISOTOX TRANSPLANTER is a Lindane solution that mixes readily with water and is designed especially for use in the transplanter. Gives low cost protection against wire worms, maggots and certain other soil insects.

1 pint . . . \$1.85

1 quart . . . \$3.48

Get Your Supply From

P. L. ROHRER & BRO., INC.

Smoketown, Pa.

397-3539

Safety Spokesmen Warn Against Double Bottoms

"Pennsylvania highways should not be allowed to look like railroad tracks, and that could happen if the trucking industry has its way."

"Highway safety—particularly the well-being of the motorist—will suffer a major defeat if House Bill 740 passes the Pennsylvania General Assembly," according to Roy D. Hanshaw, chairman of the Insurance Federation of Pennsylvania's Highway Safety Committee.

HB 740 would permit one cab to pull two trailers. Such a combination, known as a "double bottom", would increase to 65 feet the length of such a vehicle, ten feet longer than the present limit. Adding further to the hazards presented by such a rig, Hanshaw asserts that legislation would permit a double bottom to travel on any four-lane highway in the state and on local roads within a three-mile radius of major highways.

"The dangers of having these combination rigs traveling Pennsylvania highways at high speeds and the nuisance of their detrimental effects on already-congested city streets are but two of the serious problems which this piece of legislation fails to acknowledge," says Hanshaw.

Furthermore, he added, "with a growing trend toward smaller cars, the larger truck increases the already hazardous road conditions. Practically every motorist has experienced the blinding spray from heavy trucks while attempting to pass. . . the gusty winds they displace. . . and the seemingly endless period of time it takes to pass the huge trucks. All these conditions and more will be greatly aggravated by making the double bottoms even longer."

Hanshaw stated that the combination of the state's hilly and curvy roads offer great potential for auto accidents. "The question now remains, how much more hazardous will our highways become if we must contend with even longer "double-jointed truck trains."

The Insurance Federation's Highway Safety Committee is composed of police, auto club, chamber of commerce and insurance industry safety leaders. Recently re-organized, the group will carry forward important road safety leadership previously accomplished by the Pennsylvania Action Committee for Highway Safety.

The Insurance Federation of Pennsylvania is a non-profit,

professional association representing a cross-section of the industry whose companies write 85 percent of the state's premium volume.

Eshelman To Speak On June 8

Congressman Edwin D Eshelman will be the speaker at a luncheon sponsored by the Women's Republican Club at the Dutch Town and Country Inn on Friday, June 8, at noon. He will be introduced by Mrs. Daniel W. Moyer, Jr., secretary of the Republican County Committee.

The meeting is open to the public including that area of Chester County which Congressman Eshelman represents. Reservations should be made by calling Mrs. Howard P. Gordy at the clubrooms by Monday, June 4.

DAR Founding

The Daughters of the American Revolution was founded in 1890 in Washington, D.C. The organization chose the first lady Mrs. Caroline Scott Harrison, wife of President Benjamin Harrison, as its first president-general. * * *

ERTH-RITE MAXICROP

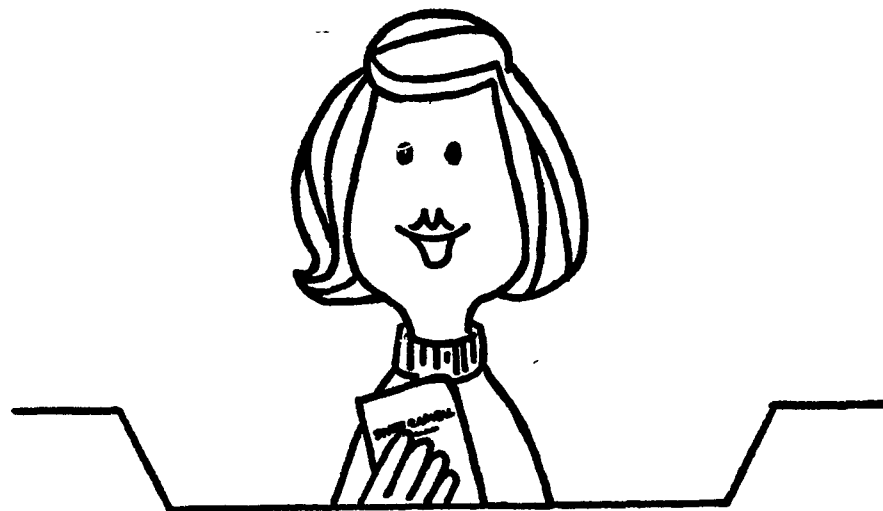
(Formerly Sea-Born)

ALGIT

ZOOK & RANCK, INC.

R.D. 1 Gap, Pa. 17527
Phone 717-442-4171

Free.



Up to 10 days' extra earnings.

No, it's not a one-month-only special. It's been happening for years with our passbook savings, the ones that earn the big 5% a year. If you invest by the 10th of any month, earnings are paid as if you did it by the first, and they're paid right up to the day you withdraw—all of which helps your money grow fast. And for even faster growth or more income, try our Savings Certificates which pay 5¼%, 5¾% and 6% per year on terms of 6 months, 1 year and 2 years. Earnings are paid from day in to day out. So why not open your account and start saving today, the extra-earning State Capital Savings way.

Our Camp Hill Shopping Center and Harrisburg East Mall offices are open evenings to 8:30, Saturdays to 4 P.M.

STATE CAPITAL SAVINGS

AND LOAN ASSOCIATION

108 N. Second Street, Harrisburg 17105
Camp Hill Shopping Center • Harrisburg East Mall
And Other Pennsylvania Cities And Towns



Member Federal Home Loan Bank System
Insured up to \$20,000 by Federal Savings and Loan Insurance Corporation