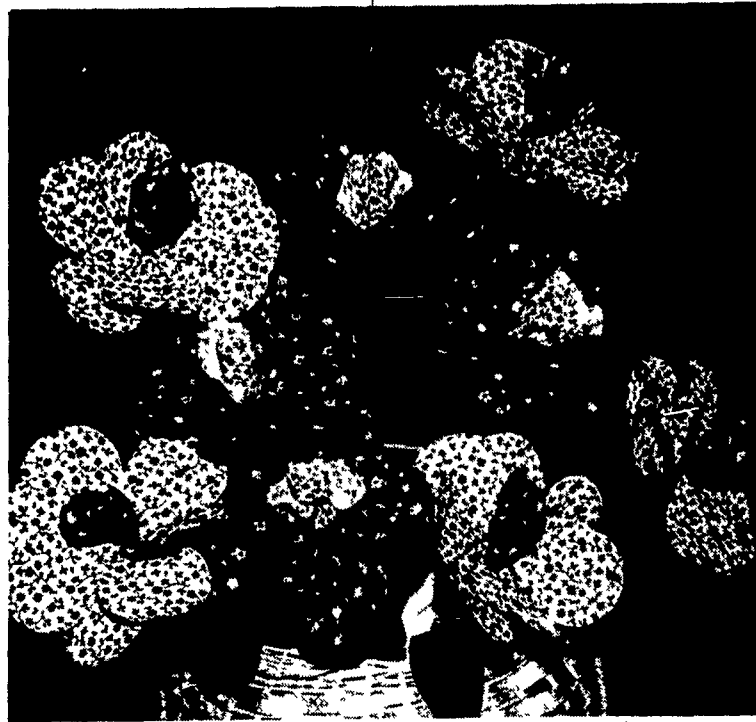


Fabric Flowers

(Continued From Page 22)

- as many as you want. If you're using green wire, you only need to wrap to the end of your last leaf. Now your first flower is completed

Another kind of flower Kathy suggests making is one in which the petals have been shaped with wire. For this flower you cut your petals as described before, leaving them 1/4 inch larger than you desire. You then stitch them together with a 1/4 inch seam, leaving the stem end of the petal open. Then turn and press. Now insert the thin wire which should be double and a little longer than the petal. The wire does not need to be the same shape as the petal to give a nice effect. After all the petals have been sewn and shaped, they can be fastened together with a pipe cleaner in the same fashion as the other flowers



Here is one of Kathy's finished products -- a basket of fresh flowers. The flowers are inserted in florist foam to stay in place. The fabric was pasted together to form these flowers.

At this point the stem is added and wrapped with florist tape as described before. Leaves can be made with wire in the same way, and added where desired.

Kathy also makes candle rings, and for some of these she makes "puffy" flowers. Petals for these are cut 1/4 inch larger than desired, then stitched, turned and pressed. They are then stuffed with "sterilized cotton, quilt stuffing, nylon stockings or whatever you have," Kathy says.

Again, Kathy says, "the petals can be any shape or size." When all the petals are finished you can sew them together with heavy duty thread. The centers can be sewn in or pasted on, and can be rick-rack, lace, ball fringe or any trim. Leaves can be sewn on or pinned in place, or they can be made with a double piece of felt, glued together with a piece of pipe cleaner sandwiched between the leaves. This can then simply be twisted around the ring.

Or the flower petals can be glued together as described before, with short pipe cleaner stems, and they can be wrapped with the florist tape to the wire ring.

Kathy suggests using a candle ring you presently have to measure the size of your wire. She says you can use any wire which is firm enough. She used double picture wire.

When sewing the flowers on the wire, she suggests doing it loosely. They can easily be arranged in proper position around the candle. Again she recommends using an odd number of flowers on the ring.

If you want to make all the flowers for your candle ring with the same fabric, Kathy says you must plan to use about 1/4 yard of 45 inch fabric, remembering that all the petals are double. Of course, for variety and

interest you can use different, coordinating fabrics.

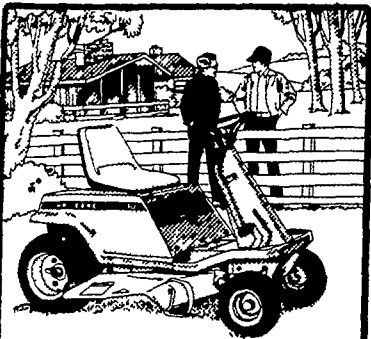
Kathy got the idea to make these lovely fabric flowers from a women's magazine, but she developed the variations herself. She said repeatedly that you should try using "anything around the house" to achieve the type flowers you want. Her goal is to try to make forsythia!

If figures, of course, that Kathy enjoys sewing and makes most of the family's clothes. She also is

"learning to quilt" and enjoys reading and hand paints her Christmas cards. Kathy is a graduate of Lampeter-Strasburg High School and Manchester College in North Manchester, Indiana where she majored in art education. She taught for several years before becoming a full time

homemaker. The Buchers have a four year old daughter, Beth, and spend most of their free time restoring their farm house, which dates from the early 1800's.

Fabric flowers can be a real home-brightener, and are easy to care for. Kathy says vacuuming them will take off the dust.



John Deere Electric Rider gives you quiet, carefree lawn care

The John Deere Electric 90 Riding Mower is not only super quiet, but it requires little maintenance. No spark plugs, oil, or oil filters to change. No tuneups required. No fuel to mix or store. Just switch it on and go. See it today at our store.



EDWIN HURST INC.
Adamstown, Pa. 215-484-4391

A. B. C. GROFF, INC.
New Holland 354-4191

WENGER IMPLEMENT, INC.
The Buck 284-4141

M. S. YEARSLEY & SONS
West Chester 696-2990

LANDIS BROS. INC.
Lancaster 393-3906

SHOTZBERGER'S
Elm 665-2141

PROTECT YOUR BARN AGAINST DETERIORATION!

LET US PAINT IT INEXPENSIVELY THIS NEW SCIENTIFIC WAY . . .

You can save big money by contracting with us to paint your barn. New Hydra-elevation equipment eliminates expensive scaffolding. Fast, new air-friction painting penetrates pores in addition to brush coverage. Send postcard for details and free estimate. No obligation.

SEALCRETE, INC.

R.D.2 EPHRATA, PA.

Phone 717-859-1127



PAUL'S MOBILE & MODULAR HOMES

PRESENTS

THE HARTFORD HOUSE

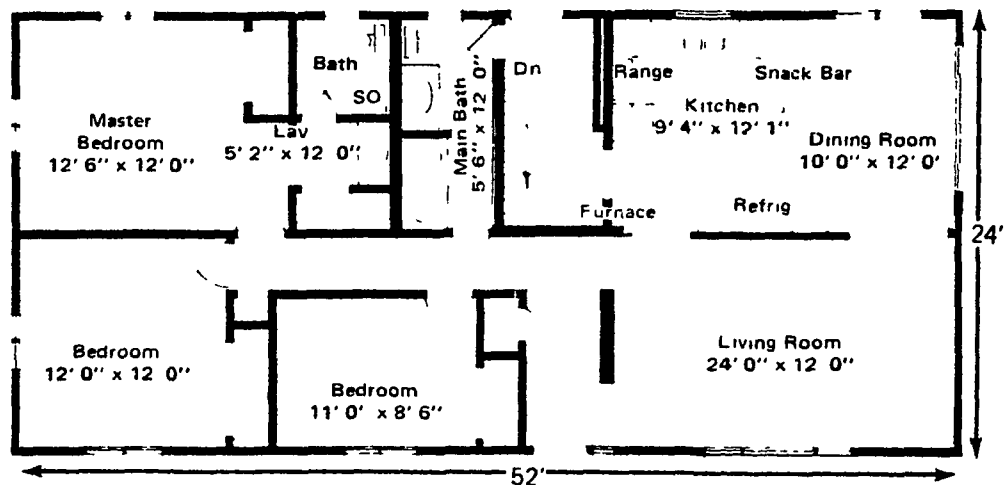


FHA APPROVAL No. SE399

BOCA APPROVAL No. RA 70-20

Exceeds Farm Home Administration Specs.

24x52' - 1248 sq. ft — 3 bedrooms — 1 1/2 Baths — Foyer



- ★ FHA Approved Aluminum Windows
- ★ 52 gal. Elect. H.W.H.
- ★ 30" Delux Gas Range
- ★ 14 cu. Ft. Refrig.
- ★ Stainless Steel Sink
- ★ Custom Kitchen Cabinets
- ★ Snack Bar
- ★ Carpet L/R, Hall, Bedroom
- ★ One Piece Fiberglass Bathtub
- ★ One Piece Fiberglass Shower
- ★ 7" Insulation Ceiling
- ★ 4" Insulation Sidewalls
- ★ Heavy Gauge Aluminum Exterior
- ★ Metal Insulated Doors
- ★ 2"x8" Floor Joists 16" O.C.
- ★ 1/2" Vinyl Drywall & Paneling
- ★ Extra Large Windows
- ★ Loads of Storage Space
- ★ Penna. Tax included

Delivered & Erected on your Foundation
all for only \$17,950

PAUL'S MOBILE HOMES, Inc.

W. Main St. (Rt. 230) Mount Joy, Pa.

653-1476

OPEN 9-9 Daily — 9-5 Sat.



MYER'S METERED GAS SERVICE, INC.



**PIG BROODERS
CHICK BROODERS
GAS SPACE HEATERS & FURNACES**

CHECK OUR PRICE ON
AUTOMATIC BULK DELIVERY OF L.P. GAS

**WE HANDLE A COMPLETE LINE
OF GAS AND ELECTRIC APPLIANCES**

Maytag - Caloric-Amana
and Other Well Known Brands

P.O. BOX 71
MANHEIM, PA 17545
Telephone (717) 665-3588