

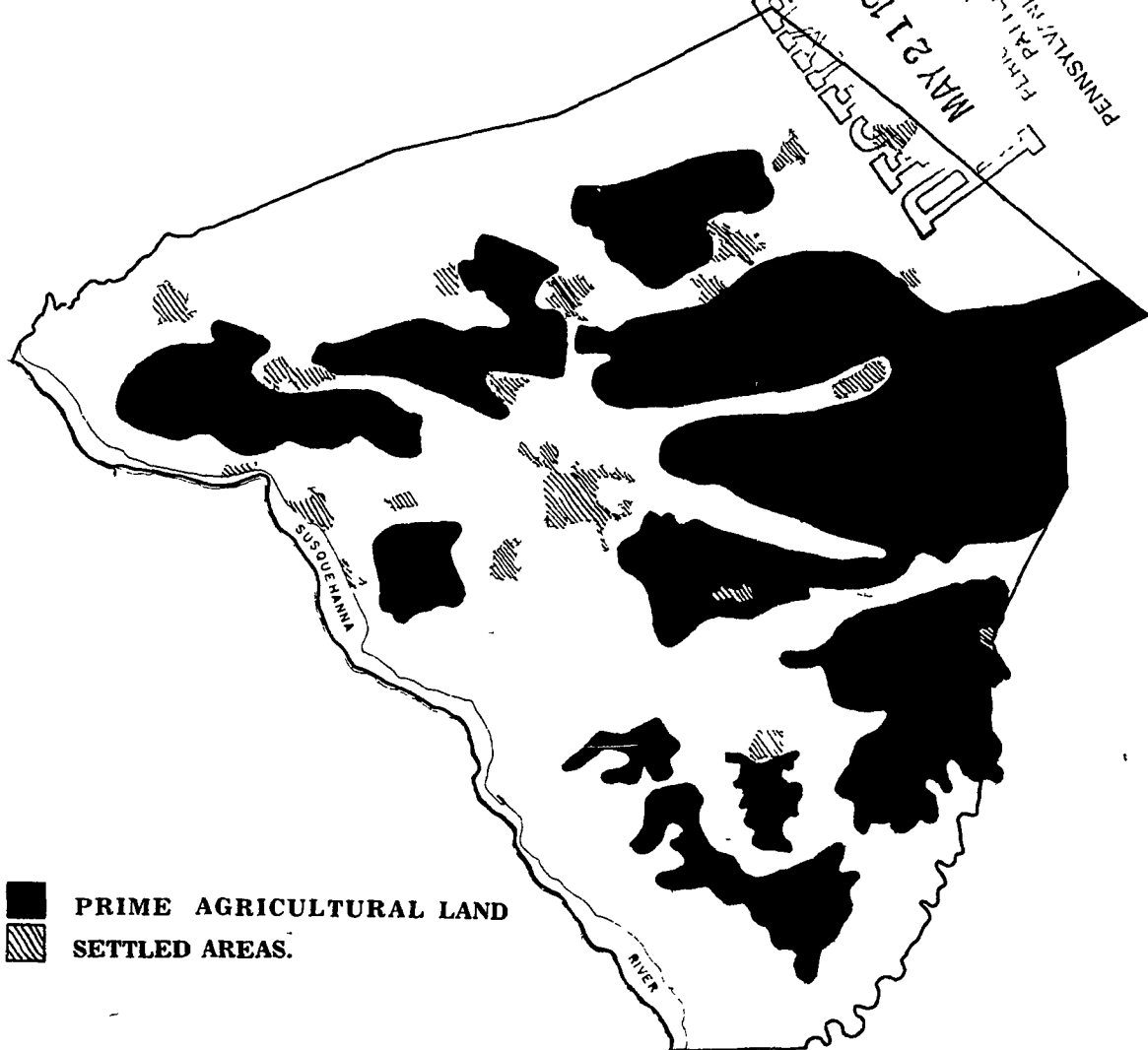
Ag.

Lancaster Farming

VOL. 18 No. 26

Lancaster Farming, Saturday, May 19, 1973

\$2.00 Per Year



The Lancaster County Planning Commission's sketch plan map showing the

location of all Class I and II soils in the county.

Farmers and Land In Lancaster Co.

Last Tuesday at the polls, Pennsylvania voters passed by an overwhelming margin a constitutional amendment which will permit preferential tax treatment for farmland.

Farmers will feel no immediate effect from the change. Legislation must still be drawn up to spell out which lands should be eligible for special tax rates, and how those rates are to be computed. The Pennsylvania State House agriculture committee has announced that it plans to hold public hearings on the matter before drafting any laws.

Locally, the amendment and any resulting legislation will probably work hand in hand with an already existing overall plan designed to guide County development away from prime agricultural lands. These lands are indicated in black on the map accompanying this article. The map was taken from a Sketch

Plan drawn up over two years ago by the Lancaster County Planning Commission.

Farmers in Lancaster County are the biggest users of land here. Policies affecting land use will therefore affect farmers more than any other group. Lawmakers, special interest groups and private citizens are becoming increasingly aware of land as a more or less limited resource, and there are moves afoot to preserve open spaces, including farmland.

These movements are making themselves felt in new laws. State-wide, there is environmental legislation on the books aimed at compelling farmers to adopt conservation measures. Both urban and rural voters throughout the state voted last Tuesday to change the constitution.

Locally, a home rule charter for the county is a definite

(Continued On Page 5)

Ray Martin Wins Speech Contest

Numerous area FFA members were successful in bringing home top honors when they met at Lehigh Valley Community College Tuesday for the Regional Public Speaking and Parliamentary Procedures Contests. Competition was with 120 FFA members from 19 Eastern Pennsylvania counties, who had previously won in county and area contests.

Ray Martin, Grassland Chapter, was successful in edging out 10 other contestants in the Public Speaking with his speech entitled "The Food Dilemma". Martin was followed in second place by Robert Hershey, Manheim Chapter, speaking on "Our Vanishing Wildlife". Harold Berkheiser, Blue Mountain Chapter, Schuylkill County was third with "Rising Prices - Feast or Famine"; Dan Mueller, Damascus, Wayne County, fourth, and Karen Loch, Lehigh County Vo-Tech, fifth.

The top three winners in this contest will be entered in State competition during FFA Week at Penn State June 27 to 29.

In the Parliamentary Procedures Contest, students assume the various offices of the FFA. The team must conduct a meeting using proper procedures, situations are presented to the team which must be handled using parliamentary law.

Northern Lebanon Chapter,

Fredericksburg, placed first. The team is comprised of the following members, and the positions they assumed:

Dale Maulfair, president; Glenn Ulrich, vice-president; Shawn Hernley, secretary; Daniel Hostetter, treasurer; Douglas Martin, reporter; Jeffrey Werner, sentinel; James Tyrpin, chaplain; Robert Shuey, student advisor. J. Ray Bickel is coach.

The Grassland Chapter at New Holland were second place winners. This team is made up of the following members and their positions:

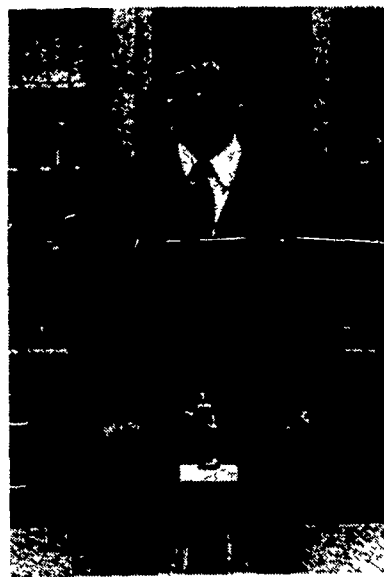
Scott Steffy, president; Donald Weaver, vice-president; David Smeltz, secretary; Clair Martin, treasurer; Donald Weiler, reporter; Larry Weber, sentinel; Lloyd Hoover, chaplain; Arthur Horst, student advisor. Cliff Day serves as coach for this team.

Third place winner was Lehigh County Vo-Tech Chapter, and the Tunkhannock Chapter placed fourth.

The top two teams will be competing during FFA Week for State honors.

Judges for both the Parliamentary Procedures and Public Speaking Contests were: Robert Edwards, Chief of Operations Division, and Carl Herr, Consultant, Adult and Post-Secondary Education, both with the Bureau of Vocational and Technical Education, Penn-

(Continued On Page 11)



Ray Martin

Farm Calendar

Monday, May 21

7 p.m. - Soil Erosion meeting, Commonwealth National Bank Auditorium, Lancaster Shopping Center.

7:30 p.m. - New Holland 4-H Baby Beef Club meeting, Robert Martin farm, New Holland RD1

8 p.m. - Red Rose DHIA Quarterly Directors meeting, Farm and Home Center.

Wednesday, May 23

Poultry Processing Conference, Penn State University, May 23-24.

Thursday, May 24

1 p.m. - Land Judging Contest, Ephrata.

7:30 p.m. - Mountville 4-H Club Organizational meeting, Mountville Church of the Brethren.

Lancaster County Swine Producers Board of Directors meeting, Farm and Home Center.

We Salute Dairy Industry June 2

Dairying is nearly a \$50 million a year business in Lancaster County, and it's an important industry in surrounding counties, too. Chester and Berks Counties each produce about \$20 million worth of milk annually, and York and Lebanon Counties each come close to the \$11 million mark.

LANCASTER FARMING will recognize the area's dynamic dairy industry in its June 2 Special Annual Dairy Issue.

We extend a special invitation to dairy groups and organizations, as well as individuals, to submit articles and news on dairying for the Dairy Issue.

Advertisers are invited to make their own appeal to a large segment of the Southeastern Pennsylvania dairy market.

To be sure to make the Dairy Issue, please submit all material by Wednesday, May 30.

Call us at 394-3047 or 626-2191 (ask for Lancaster Farming). Or write to Lancaster Farming, P.O. Box 266, Lititz, Pa. 17543.

With a Pool Yet...

The James Mimm Hilton for Horses

The James Mimm farm just outside Christiana is a bit different from most farms in this area. For one thing, the farm's main business is boarding race horses. And for another thing, the equine tenants have their very own indoor swimming pool.

Actually, all the horses boarded at the farm are standard bred used for racing. And the

pool is a therapeutic device used for training animals with sore legs or feet.

According to Mimm, the horses that exercise by swimming get just as much of a workout as the ones that run around the track. Those that swim, though, aren't subjecting their sore limbs to the pounding they'd get on the track.

The pool, which was installed three years ago, is 15 feet deep and some 35 feet in diameter. It's circular, and the horses are led around the pool by trainers

(Continued On Page 30)

Saturday, May 26
Cherry Fair, Lobachville (Oley Valley) May 26, 27, 28.