



Lancaster Farming Photo

Lancaster County home economist, Doris Thomas, offers funnel cakes to the Extension workers from Michigan. From left, Mrs. Mary Denlinger, Farm Women County president; Mrs. Opal Ruhl, committee chairman; Cathy Gallagher, Extension home economist, Wayne County, Michigan; Mrs. Doris Thomas; Janice Kukar, Extension home economist, Oakland County, Michigan.

egg cheese, homemade bread, funnel cakes and shoo fly pie. All the foods were made and donated by Farm Women Societies, and recipes were given to the visiting homemakers.

The women had traveled to Berks County on Tuesday evening and spent Wednesday visiting a mushroom farm, a growing operation and cannery. They also saw a milk juggling operation, visited the Pagoda, toured the 1815 Moxon home, restored and furnished with antiques.

They had lunch at Stokesay Castle and the Kutztown Grange prepared supper for them. They had a speaker early in the day on Berks County history and culture, and they spent some time at the Leesport Auction.

After their lunch at the Farm and Home Center Thursday, the Michigan homemakers visited Landis Valley Farm Museum and the National Wax Museum. From there they toured the Amish countryside, on a tour arranged by Mrs. Pauline Stoltzfus, Ronks, a Farm Women Society member who takes tours with the Mennonite Information Center. As they toured, they learned the history of Lancaster County and the Amish. Several stops were made on the tour.

They topped off their busy day with dinner at the Good and Plenty Restaurant, and left for home at about 9:30 p.m.

Before they left they extended a warm invitation to the homemakers of Berks and Lancaster Counties to visit them on a similar trip next year.

The Michigan women were very enthusiastic about their trip to the Pennsylvania Dutch

country, and they hope this will be the first of many such extension study tours to help them learn to know our own country better.

## PROTECT YOUR BARN AGAINST DETERIORATION!

LET US PAINT IT INEXPENSIVELY THIS NEW SCIENTIFIC WAY . . .

You can save big money by contracting with us to paint your barn. New Hydra-elevation equipment eliminates expensive scaffolding. Fast, new air-friction painting penetrates pores in addition to brush coverage. Send postcard for details and free estimate. No obligation.

**SEALCRETE, INC.**

R.D.2 EPHRATA, PA.  
Phone 717-859-1127



## Homemakers

(Continued From Page 24)

coordinated by Extension Home Economist Doris Thomas and County President Mrs. Mary Denlinger.

Committee members were Mrs. Opal Ruhl, president of Society 19 and committee chairman; Mrs. Dorothy Elmer, county secretary; Mrs. Nora Herr, president, Society 14; Mrs. Edna Buckwalter, president, Society 18; Mrs. Emily Greenwalt, president, Society 15.

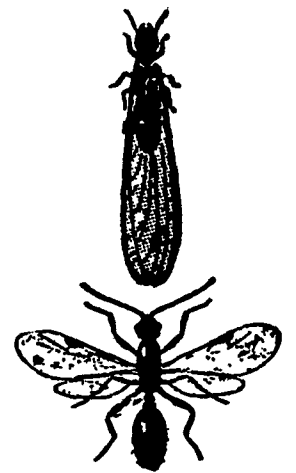
The menu for the lunch included chicken corn soup, snitz and knepp, chicken pot pie, chow chow, red beet eggs, apple butter,

GARBER OIL CO.



Fuel Chief HEATING OIL

& OIL HEATING EQUIPMENT  
AIR CONDITIONING  
MOUNT JOY, PA.  
Ph. 653-1821



## Which Bug is the Termite?

The top one, the bottom bug is a flying ant. Notice its narrow waist. The termite has a broad waist. They're quite different, actually. If you have termites or suspect them in your home, call us.



**J. EHRlich** Co. Inc.  
1278 Loop Road  
Lanc., Pa. 17601  
Phone 717-397-3721

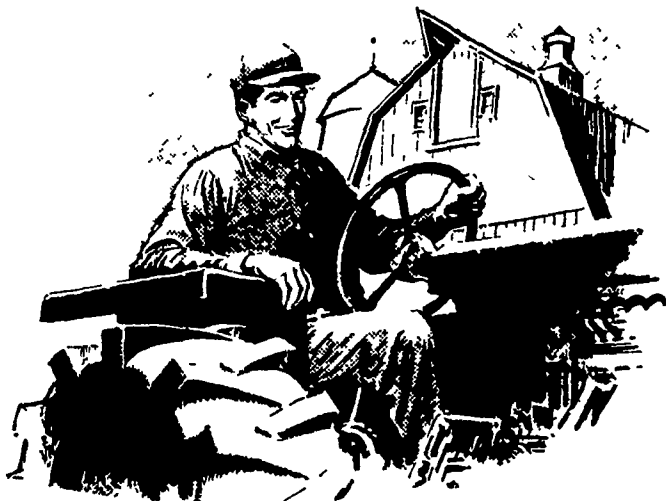
# FARM



# CREDIT

DO YOU NEED NEW

## farm machinery?



When you try to make obsolete equipment do for "one more season" you're asking for trouble. Like inefficient operation endless repairs and costly downtime. New equipment takes money. But this need be no problem for you. Farm Credit loans are readily available . . . at reasonable rates of interest, with repayment scheduled at times most convenient to you. See Farm Credit for financing the equipment you need today.



411 W. ROSEVILLE RD.,  
LANCASTER  
PH. 393-3921

AGWAY BUILDING,  
LEBANON  
PH. 273-4506

