

# Survival

(Continued From Page 20)

ruthless economic pressures of disastrous overproduction.

Many in agriculture strongly support national policy that (a) helps him avoid overproduction and unfair prices, (b) helps him get credit on reasonable terms, (c) makes new technology available to him and (d) encourages the development of readily available, competitive markets for his products.

Let us all salute the American farmer... the world's most important businessman. His amazing ability to produce has been a strong and positive force in the world economy.

U. S. Department of Agriculture (USDA) laboratories found 64 violative residues out of 3,385 samples of meat and poultry products tested during the first quarter of 1973.

A total of 18,400 tests were run on these samples, according to meat and poultry inspection officials of USDA's Animal and Plant Health Inspection Service (APHIS).

USDA's residue survey is a continuing program that helps assure the wholesomeness of our food supply. When above-tolerance residues of antibiotics, growth promotants or other

drugs are found, the test results, portions of the sample and the name and address of the owner of the animals or birds involved are turned over to the Food and Drug Administration. FDA has legal authority over animal feed additives and drugs.

APHIS conducts a three-pronged drive to prevent violative residues from getting into the food supply. The first prong is a national random sample testing program to monitor normal slaughter operations. Results of this survey give an indication of residue problems in the total livestock and poultry population. The second prong is similar to the first but is conducted in limited areas where the national survey has indicated there is the greatest chance of finding a specific residue. This phase of the monitoring program is not representative of the national situation.

The third prong is the APHIS requirement of proof of compliance for each flock or herd prior to slaughter if residues have been found in either of the survey programs. All such testing is at the owner's expense and continues until APHIS is sure that no residue problem exists.

In addition, selective samples are taken for analysis when an inspector finds an injection site or other sign that makes him suspect that a residue might be present.

During the quarter, APHIS took samples of liver, kidney, fat and muscle from bulls, steers, cows, heifers, calves, hogs, lambs, young and mature chickens and turkeys. Each sample was tested for one or more possible residues of pesticides, growth promotants, antibiotics or other animal drugs.

DES -- APHIS continued to monitor for diethylstilbestrol even though its use as a feed additive for cattle and lambs was banned by FDA on Jan. 1. It's use as an implant also was banned recently. Of 1,547 samples taken in selected areas up to April 21, nine contained DES residues. All

residues were found in steer livers. No DES residues were found in steer muscle, lamb liver or lamb muscle.

ARSENIC -- APHIS found residues of organic arsenicals in the livers of about 14 percent of the young chickens tested nationally last year. The sampling rate was increased to detect any widespread misuse of these feed additives. Of 902 samples analyzed during the first quarter of 1973, 5.3 percent (48) contained above one part per million of arsenic in liver tissue -- the tolerance set by FDA for this animal drug. No violative residues were found in swine.

In addition to DES and arsenic, APHIS found residues above tolerance levels of antibiotics in two calves, and five chlorinated hydrocarbon pesticide residues in various classes of livestock.

Allowable residues of DDT and other chlorinated hydrocarbons continue to be found in the fat of all classes of animals and birds. Nearly all of these residues are in amounts less than one-half of one part per million -- well under the tolerance set by FDA for these chemicals. Tolerance for DDT, for example, is seven parts per million.



"Even a woodpecker owes his success to the fact that he uses his head"—Tony Beebe, The Spencerville (Ohio) Journal News.

## Southeastern Penna. Tractor Pull Association ANNOUNCES THEIR FIRST TRACTOR PULL for the 1973 SEASON.

To be Held on May 19, 1973 -  
8:00 A.M. to 5:00 P.M.

At the Rough and Tumble Historical Assoc. Grounds  
Route 30 (13 miles East of Lancaster) Kinzer, Pa.

All Classes and Types of Pull used  
under P.T.P.A. Rules

5-7-9-12 & 15 Thousand Pound Classes in Stock and  
Super Stock and 7 and 9 Thousand Pound Class for  
Modified. P.T.P.A. Point Rules To be used.

All Entries Will Operate Under the Pa. Tractor  
Pull Association Inc. Rules

For Further Information and  
Complete Set of Rules Contact

## SOUTHEASTERN PENNA. TRACTOR PULL ASSOCIATION

PROMOTIONAL COMMITTEE BOX 142

Kinzer, Pa.

Ph. 717-354-9793

## Big Dutchman.

### HANDLES THE FOLLOWING EQUIPMENT, SUPPLIES, AND PARTS

- HART CUPS
- PLASTIC CHICK FOUNTS
- FOX VALVES
- SOLENOID VALVES
- TIME CLOCKS
- THERMOSTATS
- TIMERS
- PRESSURE REGULATORS
- WATER FILTERS
- EGG ROOM COOLERS
- EGG ROOM DOORS
- AUGER PAN FEEDERS
- 8' HANGING WATERERS
- SUSPENSION ACCESSORIES
- WINCHES & PULLEYS
- FOX—O—LENE TUBING
- FANS
- MANURE DRYERS
- TURKEY RANGE FEEDERS
- LAYER & CHICK CAGES
- ROUND HANGING WATERERS
- MOTORS
- SCREW HOOKS & CHAIN
- NESTS
- HOG HOUSE VENTILATION
- HOG WATER BOWLS
- HOG NIPPLE DRINKERS
- HOG HOUSE HEATERS
- CATALYTIC HEATERS
- FARROWING CRATES
- HOG SLATS
- HOG FEEDERS
- EGG WASHERS
- EGG CARTS
- BROODERS
- CAGE FEEDERS
- CURTAIN MATERIAL
- GAS & WATER HOSE
- STAINLESS & GALV CABLE
- INCINERATORS
- CABLE PIT CLEANERS
- BULK FEED BINS
- FLEX AUGER FILL SYSTEMS
- EGG COLLECTORS
- CAGE NIPPLE DRINKERS
- MANURE AUGERS
- HANGING FEEDERS
- SWISH WATERERS
- VIBRATORS
- LIGHT DIMMER
- FEED METER SCALE
- EGG GRADERS 20-70 Cases



## Big Dutchman.

A Division of U.S. Industries, Inc.

EASTERN BRANCH

215 Diller Ave., New Holland, Pa 17557



Phone 717-354-5168

# Residues Found In Meat And Poultry

**BRUNING**  
PAINT

DANIEL S. ESH

Box 351, RD 1

Ronks, Pa.

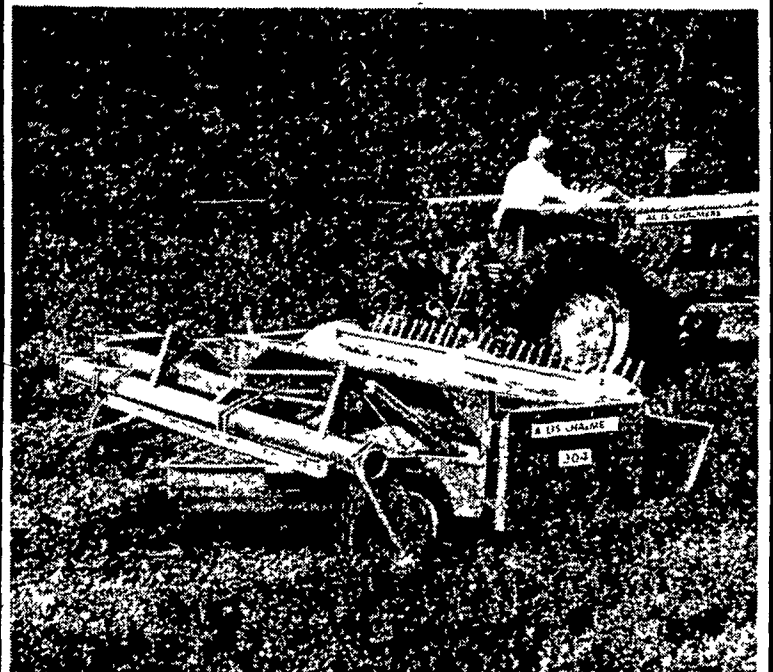
## COMPLETE BARN AND INDUSTRIAL PAINTING

Water proofing on block walls  
(5 year guarantee)

Write for Free Estimates and Service.

## 904 MOWER CONDITIONER

ALLIS-CHALMERS



## MOW, CONDITION, WINDROW with an ALLIS-CHALMERS 904 MOWER CONDITIONER

The 904's King-size 9-foot swath means fewer passes... important field-time savings. There's a time-reducer in the conditioning action, too. Both rollers have identical peripheral speed. There's no grabbing or threshing of your hay... the steel against rubber composition of unit has a gentle, cushioned touch. This action fractures the stems in staggered splits for fast, uniform curing, early storing. The same gentle, cushioned performance guards the leaves and tips against shattering, retaining more natural protein in every bale or load.

**BHM Farm Equipment, Inc.**

Annville RD 1, Pa

**Grumelli Farm Service**

Quarryville, Pa

**L. H. Brubaker**

Lancaster, Pa

**Roy H. Buch, Inc.**

Ephrata RD 2

**Nissley Farm Service**

Washington Boro, Pa



**ALLIS-CHALMERS**  
AGRICULTURAL EQUIPMENT