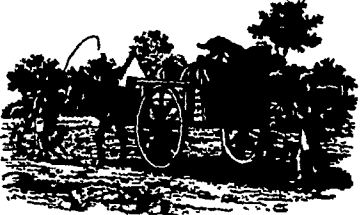




APRIL 30 - MAY 6

Blossoms come, bees hum.

Dig dandelion greens now . . . Casey Jones killed April 30, 1900 . . . New Moon May 2 . . . Meteor showers expected May 4 (observe after midnight) . . . Average length of days for week, 14 hours, 10 minutes . . . Kentucky Derby May 5 (first one held 1875) . . . Ostriches are mating . . . Stan Musial hit five home runs May 2, 1954 . . . Adhesive postage stamps invented May 6, 1840 . . . Corregidor surrendered May 6, 1942 . . . Envy never enriched any man.
Old Farmer's Riddle: What is bought by the yard and worn by the feet? (Answer below.)



Ask the Old Farmer: As a boy a long time ago we used to have a sort of relish called "pork scraps." They were pieces of pork scraps and came in a mass about the size of a potato chip, but thicker. Can you give me any information? E. F. W., Los Angeles.

These pork scraps were what were left after making lard. We have enjoyed them many a time. Some packing houses still make them and good as they are, they do not taste like the home-made variety.

Home Hints: To remove ceiling cobwebs in high, hard-to-get-at corners, try putting old socks onto the end of yardstick . . . For easier oven cleaning, sprinkle salt immediately on spills then scrape up and wipe when oven is cool . . . *Riddle answer:* A carpet.

OLD FARMER'S WEATHER FORECASTS

New England: Rain to start, then becoming heavy rain; considerably cooler latter part.
Greater New York-New Jersey: Week begins rainy, then moderately heavy rain by midweek; end of week very cool.
Middle Atlantic Coastal: Rain at first, then heavy rain and cold; very warm for weekend.
Southeast Coastal-Piedmont: Rain for most of week; warm temperatures latter part.
Florida: Cloudy and hot to start, then rain; end of week clear and warm.
Upstate & Western N.Y.-Toronto & Montreal: Light rain to start, then clear and cool; warm temperatures for weekend.
Greater Ohio Valley: Rain and cool through midweek; clear and very warm latter part.
Deep South: Week begins clear and warm, then rain after midweek; end of week clear.
Chicago and Southern Great Lakes: Rain to start, then mostly clear; very warm latter part.
Northern Great Plains-Great Lakes: Clear and warm all week except for rain in west on weekend.
Central Great Plains: Good weather all week: clear with highs in 80s.
Texas-Oklahoma: Rain at first, then clear and warm; becoming very warm for weekend.
Rocky Mountain Region: Cloudy to start, then hot by midweek and showery; light rain and cool latter part.
Southwest Desert: Week begins very warm with scattered showers, then rain; end of week partially clear and cool.
Pacific Northwest: Clear at first, then scattered showers; light rain and cool latter part.
California: Cloudy and cool to start, then light rain; end of week clear and warm.

(All Rights Reserved, Yankee, Inc., Dublin, N.H. 08444)

USDA Sees Continuing Record Farm Exports To Communist Countries

U.S. farm exports to communist countries set a new record in calendar 1972, and even greater sales are likely this year, the U.S. Department of Agriculture said recently.

In its annual review and outlook report on the agricultural situation in communist countries, USDA's Economic Research Service said that in 1972 the United States sold approximately \$284 million in farm products shipped directly to Eastern Europe, plus a sizable but still unknown amount through transshipments and interzonal trade, and \$58 million to the People's Republic of China (PRC). U.S. farm exports to the Soviet Union amounted to about \$434 million.

The report said that during fiscal 1972-73, U.S. farm exports to the Soviet Union alone are estimated at more than \$1 billion. Current estimates also indicate sharp increases in exports to Eastern Europe and the PRC, making it likely that the 1972-73 U.S. farm exports to all these countries will approach \$2 billion.

For the Soviet Union, grains—especially wheat—will comprise the highest percentage of the 1972-73 agricultural exports.

Though future Soviet grain purchases are not likely to match the huge 18 million ton sale of last summer, a continuing important need for grain imports is foreseen. More buying of soybeans is also likely.

In Eastern Europe, the record amounts of U.S. grain now being delivered will push the value of U.S. farm exports to the region up sharply. Monetary realignment, making U.S. exports less

expensive in most East European countries, is also expected to favorably affect the U.S. farm trade picture there.

The 1972 shipments of grain and vegetable oil to PRC were the first U.S. agricultural exports to the area in 2 decades. They apparently were needed to supplement reduced PRC production of several basic farm commodities due to bad weather.

A copy of "The Agricultural Situation In Communist Areas. Review of 1972 and Outlook for 1973," ERS-Foreign 350, is available free on postcard (please include zipcode) or telephone (447-7255) request from the Division of Information, Office of Management Services, U.S. Department of Agriculture, Washington, D.C. 20250

Need . . .

HAY - STRAW - EAR CORN

Buy Now and Save!

More and more farmers are buying from us for better value and all around satisfaction

DELIVERED — ANY QUANTITY

Phone Area Code 717 687-7631

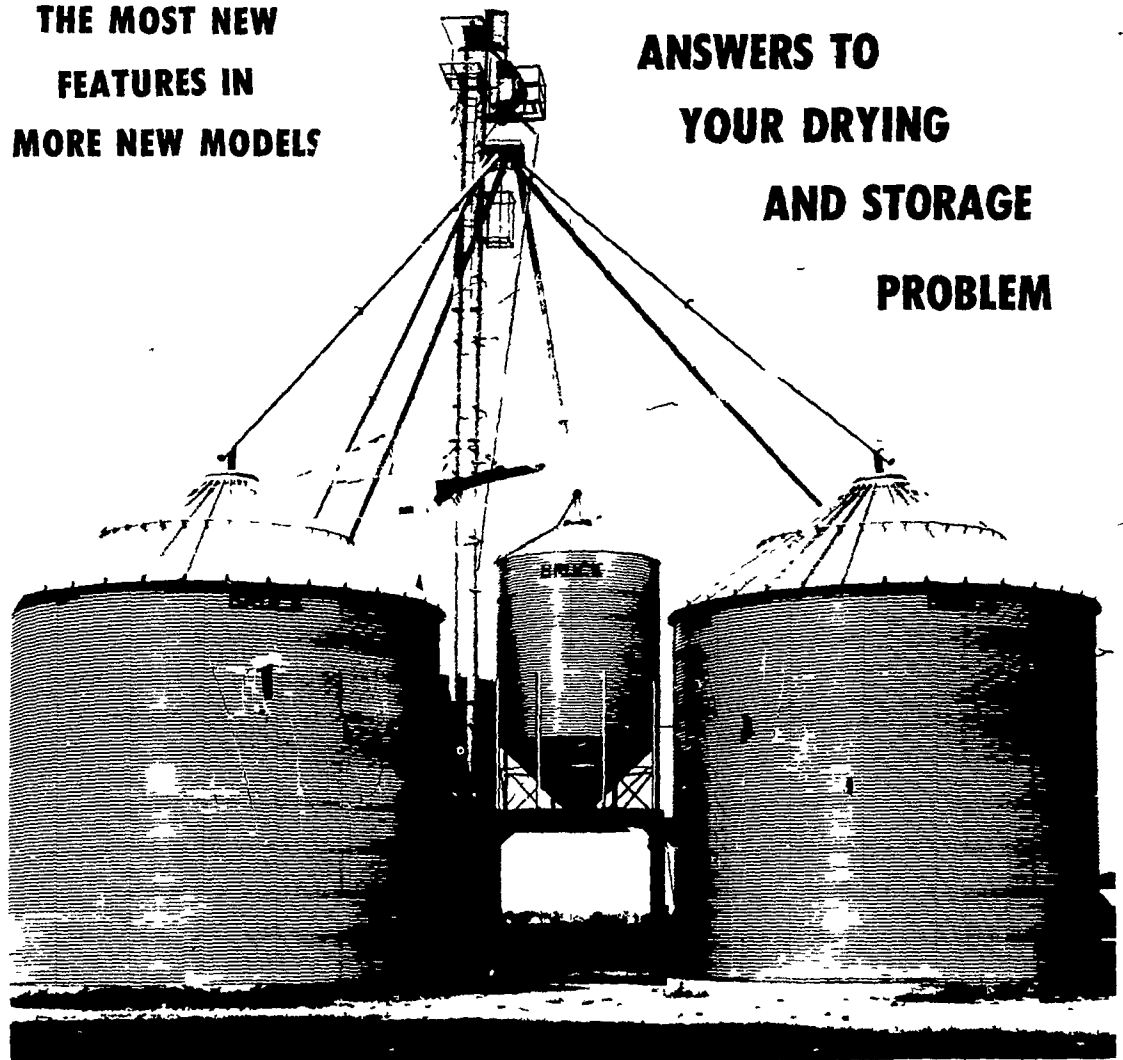
Esbenshade Turkey Farm

PARADISE, PA.

BROCK GRAIN BINS

THE MOST NEW FEATURES IN MORE NEW MODELS

ANSWERS TO YOUR DRYING AND STORAGE PROBLEM



130 MODELS
 12 TO 48 FOOT DIAMETER BINS
 CAPACITY FROM 1700 TO 75,000 BUSHELS
 SEE US FOR COMPLETE DESIGN & LAYOUT
 TAILORED TO FIT YOUR NEEDS.

Order Now to Earn Early Order Discount.

WE SELL, SERVICE AND INSTALL

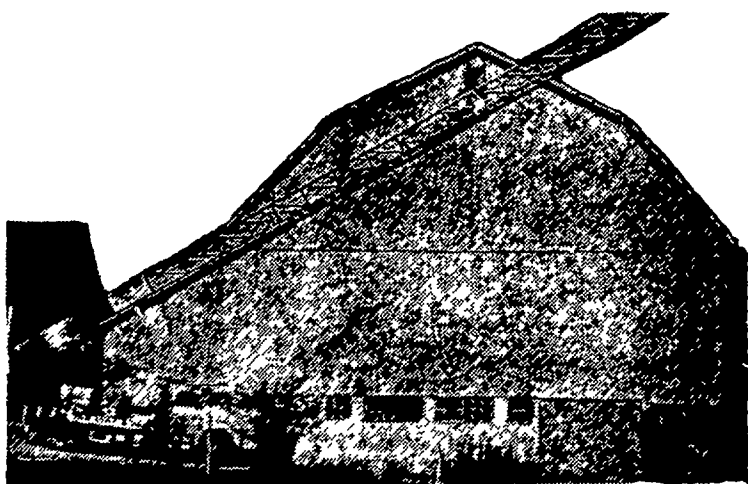
E. M. HERR EQUIPMENT, INC.

R. D. 1, Willow Street

717-464-3321



WE USE
BRUNING QUALITY PAINT
 AND IT DOES STAY ON!!!



Aerial Ladder Equipment Used To Paint Your Farm Buildings

- Modern and Efficient Method
- Reasonable Prices
- Over 16 Years Experience
- Spray-on and Brush-in Method Has Proven Satisfactory On Over 1500 Barns Of Our Well Pleased Customers.

C. RALPH MILLER

Spray-On and Brush-In Painter

R. D. 4, Manheim, Pa. 17545

Ph. 665-3388