

## Chocolate-Chocolate-Chocolate Cake



A superlative triple-decker chocolate cake using both melted chocolate and fudge chips adds up to stunningly rich flavor. Cream cheese—both in the cake and the frosting—lends tender melting moistness to each bite. Chocolate-Chocolate-Chocolate Cake also deserves accolades for its wholesomeness. The enriched flour used in the batter makes this dessert an important source of these essential nutrients: the B-vitamins, thiamine, niacin and riboflavin, and the mineral, iron.

### Chocolate-Chocolate-Chocolate Cake

- |  |  |
|--|--|
| three (8-inch) layers                  |  |
| 3 to 4 teaspoons prepared cocoa mix    | 2 teaspoons baking soda                              |
| 1/2 cup butter, softened               | 1 teaspoon salt                                      |
| 1/2 cup (4 oz.) cream cheese, softened | 2 cups milk  |
| 1 1/4 cups sugar                       | 4 squares (1 oz. each) unsweetened chocolate, melted |
| 2 eggs                                 | 1 package (6 oz.) fudge chocolate pieces             |
| 1 teaspoon vanilla extract             | Creamy Chocolate Frosting                            |
| 3 cups enriched flour*                 |  |

Grease three 8-inch round cake pans. Dust with cocoa; set aside. Cream together butter, cream cheese and sugar until light and fluffy, about 5 minutes. Beat in eggs, one at a time. Blend in vanilla. Stir together flour, soda and salt. Thoroughly blend flour mixture into creamed mixture, alternately with milk, beginning and ending with flour.

Thoroughly blend melted chocolate into batter. Pour half the batter into prepared pans. Sprinkle fudge pieces evenly over batter in pans. Pour remaining batter over. Bake in preheated 350° oven 20 to 25 minutes, or until cake tester comes out clean. Cake tester may hit a fudge piece and come out sticky, if so, clean tester and try again. Cool 10 minutes before removing from pans. Cool thoroughly before frosting.

### Creamy Chocolate Frosting

- |  |                                   |
|--|-----------------------------------|
| 1 package (6 oz.) fudge chocolate pieces | 4 cups sifted confectioners sugar |
| 1 tablespoon oil                         | 1 teaspoon vanilla extract        |
| 1/2 cup (4 oz.) cream cheese, softened   | 1 egg                             |
| 1/3 cup butter, softened                 | 1 tablespoon milk, about          |

Melt chocolate pieces with oil. Beat together cream cheese and butter until fluffy. Gradually blend in sugar and vanilla. Blend in chocolate. Beat in egg. Add milk, a teaspoon at a time, until of spreading consistency.

\*Spoon flour into dry measuring cup; level. Do not scoop.  
NOTE: If self-rising flour is used, omit salt.

## Cooperation Needed For Energy Solution, Oil Executive Says

A top oil executive has urged America's leaders and spokesmen for the general public to join together to try to solve the nation's energy-environment problems.

P. N. Gammelgard, senior vice president for public and environmental affairs, the American Petroleum Insti-

tute, said in a Dallas, Tex., meeting that the conservationists, "are going to have to recognize—sooner, not later—that, if successfully delaying these projects that the country must have can be called victories at all, they may well turn out to be very limited victories of short duration. Time is running out. The energy gap that exists now is a potential energy crisis.

"For our part, we in industry are going to have to realize that the ball game is changing. I am not saying that we can ignore the im-

portance of things like operating efficiency, the production of quality goods and services carrying reasonable price tags, a strong competitive position, and economic laws in general. These are the business basics which can mean the difference between a company's surviving and perishing. I am saying that to these basics we can add another that is equally important—environmental consciousness."

TRY A CLASSIFIED AD!

## Automated Plywood Said to Reduce Costs

A highly automated method for manufacturing plywood, developed by Georgia-Pacific Corp. for its own plants to reduce unit costs, increase production, and improve wood utilization, is now being offered to other manufacturers on a royalty basis.

The machinery and techniques, including special company-developed thermo-setting resin adhesives, has resulted in "substantial savings at G-P plants in both the West and South," and can be custom engineered to fit individual plant production and space needs, the firm said.

## Aerial Ladder Equipped

# FARM PAINTING

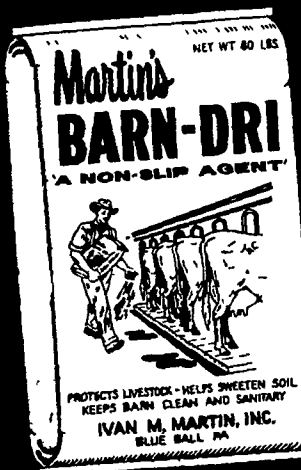
We Spray it on and Brush It In!

FOR FREE ESTIMATES  
CALL COLLECT 717-393-6530

OR WRITE  
**HENRY K. FISHER**

2322 Old Phila. Pike  
Lancaster, Pa. 17602

Protects livestock



keeps barns  
clean & sanitary

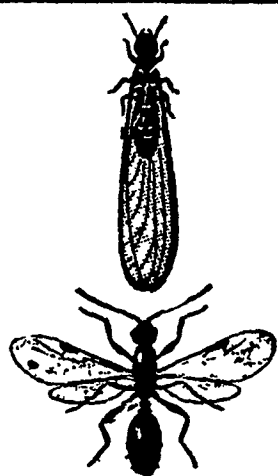
# MARTIN'S BARN-DRI

Use in any stable or animal pen that has a tendency to become slippery when wet.

- Cow Stables and Runways
- Hog Pens
- Sheep Stables
- Dog and Cat Kennels
- Chicken Houses
- Other damp areas

See your local dealer.

**IVAN M. MARTIN, INC.**

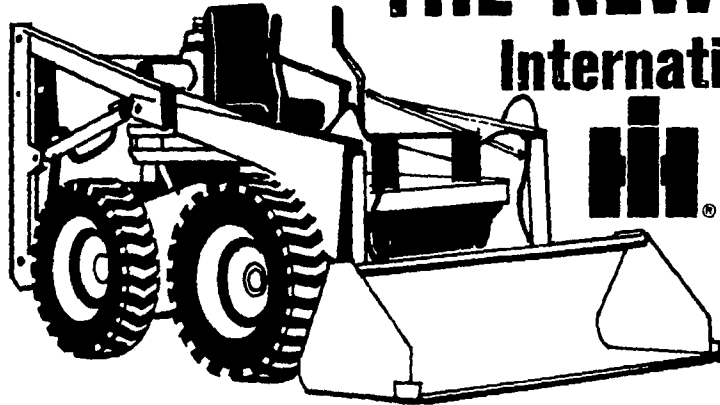


## Which Bug is the Termite?

The top one, the bottom bug is a flying ant. Notice its narrow waist. The termite has a broad waist. They're quite different, actually. If you have termites or suspect them in your home, call us.



**J. EHRlich Co. Inc.**  
1278 Loop Road  
Lanc., Pa. 17601  
Phone 717-397-3721



## THE NEW COMPACT LOADER

### International 3200A Loader Tractor

A truly compact loader

- Forward or reverse speeds from 0 to 8 MPH
- Four wheel drive . . . 30 BHP engine
- Exclusive oscillating axles for stable movement over rough terrain

Two 3200 A Compact Loaders From Our Rental Fleet Can be Purchased at Tremendous Savings.

NOW IS THE TIME

To Take Advantage of our Extra Special Discounts on all Farm Equipment.

- ★ TRACTORS
- ★ BALERS
- ★ COMBINES
- ★ FORAGE HARVESTORS
- ★ MOWER CONDITIONERS
- ★ WE HAVE A FEW AUTOMATIC PLOWS READY FOR DELIVERY

**BE SURE TO SEE US BEFORE YOU BUY AND SAVE**

# INTERNATIONAL HARVESTER

SALES & SERVICE

1054 S. State St. Ephrata, PA. Pa. Ph. 733-2283

Free rotary mower with purchase of a new 1973 CADET TRACTOR.

