

SAVORY POTATO SAMOSAS

(Deep-fried Indian Turnovers)

Potato Filling:

- ½ pound (carton or plastic bag) frozen full straight-cut or crinkle-cut French fried potatoes
- ½ cup frozen green peas
- 2 tablespoons vegetable oil
- ½ teaspoon mustard seed
- ½ cup finely chopped onion
- 1 tablespoon water
- 1 teaspoon each, ground coriander and fennel seed
- ½ teaspoon each: curry powder and ground ginger
- ¼ teaspoon each: ground cumin and ground turmeric
- ⅛ teaspoon cayenne or red pepper

Pastry:

- 1 package (11 oz.) free-flowing pie crust mix

Fat or oil for frying
Thaw frozen potatoes and peas; cut French fries into ½-

inch pieces. In a heavy 10-inch fry pan, heat oil; add mustard seed and cook till seeds begin to burst. Add onion and fry, stirring constantly, till golden. Stir in potatoes, peas, water and remaining 7 spices. Cover and simmer, stirring occasionally, for 10 minutes or till potatoes and peas are fork-tender. Turn potato mixture out onto a plate and let cool. Prepare pastry as package directs. On a lightly floured surface, roll out half of pastry; cut into 7 or 8 5-inch circles. Spoon 1 tablespoon Potato Filling on half of each circle. Moisten circular edges with water. Fold pastry over filling; press edges closed with finger or fork. Slit or prick tops. Repeat with rest of pastry. Fry several Samosas at a time in deep hot fat (375 degrees on deep-frying ther-

mometer) for 3 to 4 minutes or till golden brown on both sides. Drain on paper towels; keep warm in a 200-degree

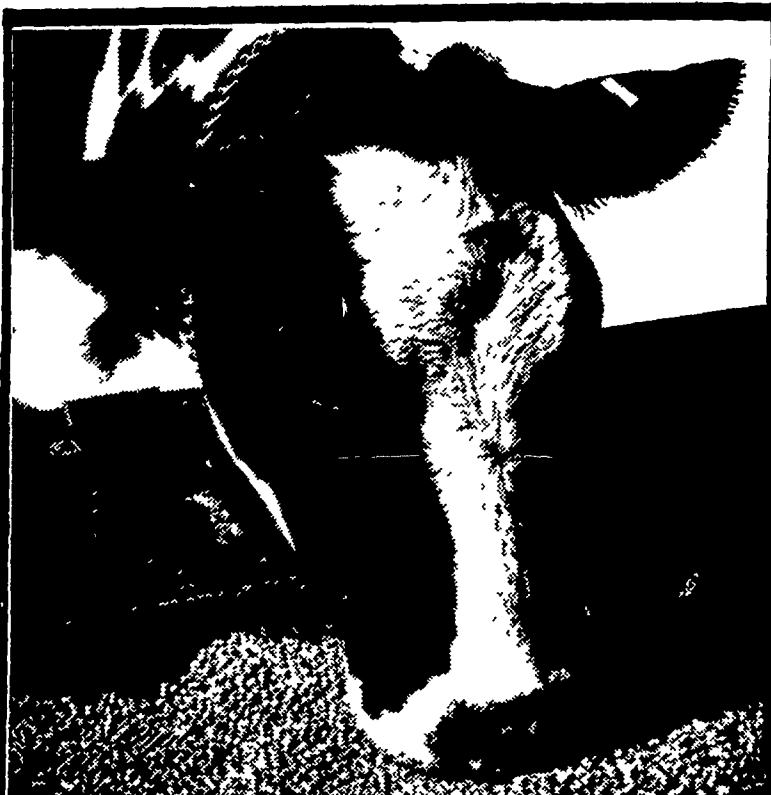
oven. Serve with banana chips for a snack or with chutney for a light meal. Yield: about 15 turnovers.

BACKHOES FOR SALE

J.D. 500 loader Backhoe
Ford Major loader Backhoe
3-Case 530CK loader Backhoe
4-Case 530CK loader Backhoe
Case 420 loader Backhoe
Case 680CK loader
Ford 4500 loader Backhoe
Ford 3400 loader Backhoe
Ford 800 loader Backhoe
Int. 3444 loader Backhoe
MORE ARRIVING DAILY

WENGER'S FARM MACHINERY, INC.

So. Race St.
Myerstown, Pa.
Ph. 717-866-2138



For high efficiency at low cost feed your cows Checkerboard Dairy

You can take advantage of present high milk prices by getting your cows to produce at their bred-in ability—at a low cost. Checkerboard Dairy is the milking ration for the dairyman who wants a highly efficient, yet a low-cost ration for his herd. Checkerboard Dairy has a balance of vitamins, minerals and protein cows need for top performance. And it's a complete milking ration, high in molasses for added palatability and pelleted for easy handling and feeding.

Put your herd on Checkerboard Dairy. See us today—and let Checkerboard Dairy help your cows produce all the milk that's bred into them—and let you take advantage of today's good milk prices.

John J. Hess, II, Inc.
Ph: 442-4632
Paradise

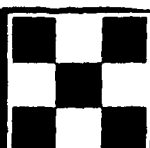
James High & Sons
Ph: 354-0301
Gordonville

West Willow Farmers Assn., Inc.
Ph: 464-3431
West Willow

Wenger's Feed Mill Inc.
Ph: 367-1195
Rheems

Ira B. Landis
Ph: 665-3248
Box 276, Manheim RD3

John B. Kurtz
Ph: 354-9251
R. D. 3, Ephrata



PURINA CHOWS

Recycling Art Is 66 Years Old

The re-cycling of aluminum, considered a new environmental art by conservationists, is in reality more than sixty-six years old. Industry has been gathering and re-cycling the nation's waste aluminum since 1904.

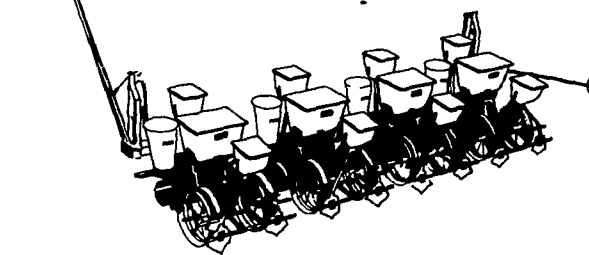
In that year, the U. S. Reduction Company of East Chicago, Ind., first began to take the cast-off portion of aluminum and to melt it down for re-use in manufacturing.

Today a handful of aluminum smelting companies supply more than a fifth of the country's total aluminum needs. In 1971, they will sustain this flow by re-cycling a major slice of an estimated 2 billion pounds of new and old scrap aluminum from the nation's growing scrap pile, equal to more than 14 per cent of the total scrap generated by the country since 1960.

YOUR LASSO DISTRIBUTOR ROYSTER CO.

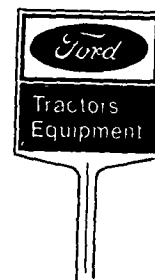
500 Running Pump Road Lancaster, Pa.
Phone 717-299-2541

FORD 309 PLANTER



For Any Size Farm,
Most Any Kind of Seed.
Ford 309 Stands for Speed
and Accuracy.

- Capacity for Long Runs
- Precision At High Speeds
- Durability To Work For Years
- Fully Tractor Mounted
- Convenience You'll Like



ALLEN H. MATZ, INC.

505 E. Main St.
New Holland, Pa.
Ph. 354-2214

AGWAY

CORN growers GRAIN growers

Take advantage of this Agway time saver



Put Agway Certified Spreader Service to work for your plow-down fertilizer needs.

You get this hard to beat combination. Fast, accurate application by skilled Agway operators in their Certified truck spreaders. Economical Agway bulk blend fertilizer produced to your specification with no waste, no filler.

Have your own gravity grain trailers or truck? You can haul your own bulk blend right from the nearby Cedar Lane Agway plant at East Earl.

Don't get caught short this spring. Call Agway now for Complete details on bulk blend fertilizer and Agway spreading service.

- Certified Spreader Service • Agway Corn Starter • Nitran Application Service



Ephrata
Henry Hoover
717-733-6593
Gordonville
M M Good & Son
717-768-3781

Lancaster
717-394-0541
New Holland
717-354-2146

Pomeroy
215-857-5545
West Chester
215-696-1700