

Poultry Market Reports

Fogelsville

Tuesday, April 3
Heavy type hens 11-40, mostly 20-30; Pullets 33-42, mostly 36-40; Roasters 31-49, mostly 38-47; Capons 52-59; Ducks 45-46; Drakes 43-50; Turkeys-hens 43; Rabbits 65-80, mostly 75-76; Guineas 75-80; Pigeons (per pr.) 50-3.80.

Total coops sold 284.
Auction every Tuesday. Poultry received Monday 7 p.m. to 10:30 p.m., Tuesday 7 a.m. to 12 Noon, Sale at 11:30 a.m.
Directions - Take Rt. 22 thruway. Exit at Fogelsville Exit. North on stoplight in Fogelsville. Turn left, proceed 1 mile.

Tuesday, April 3
Pullets 34-45, mostly 42-45; Ducks 49-52; Drakes 42-57½; Geese 38½; Rabbits 65-79, mostly 75-77; Guineas 84-95, mostly 90-95; Pigeons (per pair) 1.59-2.80. Total coops sold 224.

Delmarva

Wednesday, April 4
BROILER-FRYER MARKET
Ready to cook movement irregular, ranging light and disappointing at some terminal markets while good elsewhere. Slaughter schedules generally well maintained. Less than

trucklot prices unchanged on both plant and US Grade A. Live supplies adequate: Undertone unsettled.

Negotiated trucklot prices 2-3 lb. ready to cook broiler-fryers for delivery this week Plant Grade 44. Pool trucklot prices for Thursday arrival; U.S. Grade A 47-49½, mostly 47; Plant Grade 46-47½, mostly 46.

Eastern Pa. and N. J.

Wednesday, April 4
LIVE POULTRY
Prices 1c higher on light type hens. Occasional unconfirmed sales reported slightly higher. Demand good for, barely adequate to short offerings. Offerings of heavy type hens adequate for a fairly good demand. Prices paid at farm: Light type hens 8-12, mostly 11½-12 in Pa., mostly 11-12 in N.J. Heavy type hens TFEWR.

Egg Market

Wednesday, April 4
Baltimore Eggs
Market Steady. Movement good on large where featured but only fair through other outlets. Supplies are adequate. Carton eggs: Prices to retailers, state graded (Min One Case Sale) White

Weekly New York Egg Market

(From Monday, April 2nd to Friday, April 6th.)

	Mon.	Tues.	Wed.	Thurs.	Fri.
WHITE					
Fcy. Ex. Large	49	36	49	51	51
Large	49	49	49	51	51
Mediums	46	46	46	48	48
Pullets	35	35	35	35	35
Peeweese	25	25	25	25	25
BROWN					
Fcy. Large	47	48	48	50	51
Mediums	Unquoted				
Pullets	Unquoted				
Peeweese	Unquoted				
Standards	45	45	45	45	45
Checks	32	32	32	32	32

Longtone - Full steady.
Copyright 1973 Urner Barry Publications

New England Weekly Shell Egg Report

New England Weekly Shell Egg Report
Tuesday, April 3
Prices paid per dozen Grade "A" brown eggs in cartons delivered to retail stores:-

	EX LARGE	LARGE	MEDIUM	SMALL
MASS+	54-60	52-58	48-56	32-40
Mostly	55-57	53-55	49-51	33-35
NEW HAMP	55-63	53-61	49-57	33-41
Mostly	57-58	55-56	51-52	35-36
R.I.	56½-57½	54½-55½	51½-52½	35-36½
MOSTLY				
VERMONT	63-68	60-65	55-58	TOO FEW
Mostly				
MAINE	59-61	57-59	53-55	37-39
Mostly				

INCLUDES CENTRAL & WESTERN SECTIONS ONLY.

Grade A large 56-64, Mostly 57-60.
Grade A Medium 53-61, Mostly 55-58.

Philadelphia Eggs

Wednesday, April 4
Philadelphia Eggs
Prices steady, demand fair to good where widespread feature activity involved. Offerings of all sizes continue fully adequate to adequate for needs. Prices to retailers: Sales to volume buyers, consumer grades white eggs in cartons, delivered: store door A Extra Large 54-55½; A Large 53-54½; A Medium 48½-50

Omaha

Thursday, April 5
Cattle: compared with last week's close: After a period of very uneven trading, closing prices on slaughter Steers barely steady with late previous week under very narrow demand. Heifers steady to 50 lower. Cows 3.00-4.00 higher and bulls strong to 1.00 higher. Feeders 50-1.00 higher early but trade not well tested late.

Four day receipts only 9,000 as compared 17,400 previous week and 16,600 a year ago. For second successive week, trading on slaughter steers and heifers wildly erratic Supplies sub-

stantially below normal as heavy weekend rains made early livestock movement over secondary roads difficult and deteriorated feedlot conditions. Steers made up approximately 30 percent, and heifers 42 percent, predominance good to average. Choice and mud quite prevalent. Cows near 15 percent, feeders 10 percent.

Lancaster Farming

Lancaster County's Own Farm Weekly
P.O. Box 266 - Lititz, Pa. 17543
Office: 22 E. Main St., Lititz, Pa. 17543
Record-Express Office Bldg. Phone: Lancaster 717-394-3047 or Lititz 717-626-2191
Richard E. Wanner, Editor
Subscription price: \$2 per year in Lancaster County; \$3 elsewhere

Established November 4, 1955
Published every Saturday by Lancaster Farming, Lititz, Pa.
Second Class Postage paid at Lititz, Pa. 17543
Members of Newspaper Farm Editors Assn., Pa. Newspaper Publishers Association, and National Newspaper Association.

GET A GOOD FEELING...

Plant Funk's G-Hybrids!

G-4646 G-5757



A. H. HOFFMAN SEEDS, INC.
Landisville, Pa. 898-2261

Funk's is a Brand Name
Numbers Identify Varieties
PURITY GUARANTEED
INTERNATIONAL, INC.
International Headquarters
Bloomington, Illinois 61701

The limitations of warranty and remedy as the tag attached to each bag of Funk's G-Hybrid seed is a part of the terms of sale thereof.

DEPENDABLE HYBRIDS FROM DEPENDABLE PEOPLE

New York Dressed Meats

Compared with Wednesday, prices steady for beef, veal and calf. Pork cuts, lamb mostly \$1.00 lower.

Small supplies of fresh meats adequate throughout as movement into retail channels is disappointingly slow. Lamb chucks on a peddling basis and offered out 15c to 20c lower than week previous.

STEER BEEF

Prime 600-900 pounds 72.50-74.00; Choice 600-700 72.50-74.00; 700-800 72.50-73.50; 800-900 72.00-73.00; Good 500-800 70.00-71.00.

HEIFER BEEF

Choice 500-700 72.00-73.00.
CALF (SKIN OFF)
150-350 Pounds
Choice 83.00-89.00; Good 80.00-86.00; Standard 76.00-79.00.

VEAL (SKIN OFF)

Choice 90-150 pounds 110.00-114.00; Good 60-90 107.00-110.00; Standard 60-120 89.00-92.00.

LAMB

Choice 30-55 pounds 76.50-78.00; 55-65 74.00-76.00.

CHOICE BEEF CUTS

Hinds (Steer) 145-190 pounds 82.00-84.00; Arm Chucks 90-105 66.00-68.00; Ribs (7-Rib) 34-40 88.00-92.00; Loins (Trmd) 50-70 102.00-105.00; Rounds (Steer) 70-95 75.00-80.00; Full Plates 52.50-53.00; Hinds (Heifer) 120-170 81.00-83.00.

FRESH PORK CUTS

Loins (Regular) 8-14 pounds 77.00-79.00; 14-17 76.00-78.00; Picnics (Regular) 4-8 49.00-50.50; Boston Butts 4-8 67.00-70.00; Spareribs 3 pounds down 78.00-81.00; Hams (Skinned) 14-17 70.50-74.00; 17-20 69.50-71.00.

KOSHER MARKET

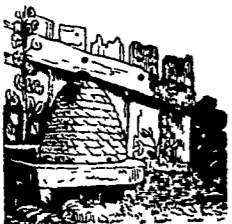
KOSHER STEER BEEF AND LAMB: Prices unchanged mid week outlet fair.



APRIL 9-15

Temperature drop might kill some apple crops.

Income taxes due on the 15th . . . Moll Pitcher died April 9, 1913 . . . First quarter of the Moon April 9 . . . Walrus mating now . . . Average length of days for week, 13 hours, 16 minutes . . . Titanic sank April 15, 1912 . . . Plant shrubs now . . . Green meteor seen from Maine to Delaware April 11, 1949 . . . Pony Express started April 9, 1860 . . . Maine sardine season opens . . . Let thy vices die before thee.
Old Farmer's Riddle: What's the difference between a high mountain and a spoonful of castor oil? (Answer below.)



Home Hint: To avoid odor when cooking cabbage, put a heel of bread on the cabbage before covering to cook . . . Keep ants out by putting talcum powder along their favorite entrances . . . Riddle answer: One's hard to get up and the other is hard to get down

OLD FARMER'S WEATHER FORECASTS

New England: Cool to start, 2-4" snow in mountains, then rain; rain, heavy at first, continuing through end of week.
Greater New York-New Jersey: Light rain and cool all week.
Middle Atlantic Coastal: Warm with intermittent rain at first, then heavy rain; Cloudy and cold latter part, then showers.
Southeast Coastal-Piedmont: Week begins cloudy and warm, then rain and cold; clear and warm end of week.
Florida: Cloudy and warm to start, then rain in central region and along coast; clear and cool latter part.
Upstate & Western N.Y.-Toronto & Montreal: Light rain at first, then heavy rain and cold; rain mixed with snow in east and light snow in west latter part
Greater Ohio Valley: Week begins clear and cool, then rain; 3-5" snow in east at week's end, clear and warm in west
Deep South: Cloudy and warm to start, then heavy rain and cold; end of week generally; clear and becoming hot.
Chicago and Southern Great Lakes: Intermittent rain mixed with snow for most of week; end of week clear and unseasonably warm with 3-5" snow in southeast.
Northern Great Plains-Great Lakes: Light snow and cold to start, then partly cloudy and cool; clear and warm latter part, then rain.
Central Great Plains: Clear and cold at first, then rain; end of week clear and unseasonably warm, then rain.
Texas-Oklahoma: Week begins clear and warm, then rain and cool; clear and hot latter part
Rocky Mountain Region: Rain to start, then clear and warm; end of week very warm, then light rain and cool.
Southwest Desert: Clear and hot, highs in 90s, most of week; cloudy and cooler for weekend.
Pacific Northwest: Most of week clear and warm; cloudy and cooler latter part
California: Clear to start, then very warm by midweek; light rain latter part, then cloudy and cool by weekend.

(All Rights Reserved Yankee Inc., Dublin, N.H. 03444)

BABCOCK

Was and Still

is No. 1



1st Place Winner

in
Pennsylvania
Random Sample
Egg Laying Test
25c more income over
closest competitor.
For more detailed
figures contact



BABCOCK FARMS, INC.

Telephone (717) 626-8257

Telephone (717) 626-8561