

Hog Prices

Lebanon Valley Auction

Tuesday, March 6
300 Head of Hogs
Barrows and Gilts 25c to mostly 75c higher.
BARROWS AND GILTS: U.S. 2-3 200 - 245 pounds 40.25 - 40.85; 2-4 215 - 255 40.10 - 40.35.
SOWS: U.S. 1-3 300 - 450 pounds 32.00 - 34.00; 2-3 400 - 500 31.25 - 32.50.
BOARS: 27.00 - 29.50.
22 Head of Feeder Pigs
U.S. 1-3 40 pounds feeder pigs 25.50 per head; lot 1-3 100 pounds 35.00 per head.

Lancaster Market

Monday, March 5
Barrows and gilts strong to 25 higher; sows scarce.
BARROWS AND GILTS: US 1 200-240 lb. 41.00-41.50; US 1-2 200-240 lb. 40.25-40.50; US 2-3 190-255 lb. 39.75-40.25; US 3-4 260-280 lb. 38.50-39.50.

Peoria Auction

HOGS-3,000. Trading active. Steady to 25 higher.
US 1-2 200-240 lbs. 40.00-40.50 (100 head at 40.75) (70 head at 41.00). US 1-3 200-270 lbs. 39.50-40.00.

New Holland Auction

Monday, March 5
Hogs 1028: Barrows & Gilts: Strong to \$1 higher. US No. 1-2 200-240 lbs. 40.75-41.50; US No. 1-3 200-245 lbs. 40.25-40.75; US No. 2-4 230-265 lbs. 39.50-40.25; US No. 2-4 160-195 lbs. 38.00-40.25.
Sows: U S No. 1-3 300-550 lbs. 29.50-32.75
Boars: 29.75-30.50.

U. S. Inspected Livestock Slaughter

	CATTLE	HOGS	SHEEP
Week to date	486,000	1,213,000	134,000
Last week	482,000	1,210,000	139,000
Last year	463,000	1,409,000	150,000

The Lancaster Livestock Yards, Inc.

AND
Rosenthal and Co.
(Commodity Brokers)

Are Proud to Announce a "Livestock Futures Seminar"

- Topics to be Discussed -

How Hedging Works for the Livestock Producer!
How to Decide When to Hedge!
How you can Place a Hedge!
How you can Lock In PROFITS Through Hedging!

Date: Thursday, March 22
Time: 7:30 P.M.
Place: Auction Pavilion
Lancaster Livestock Yards, Inc.

For Reservations call collect
Rosenthal and Co., 215-821-8111 or mail coupon below

Name

Address

Phone

Rosenthal and Co.

2200 Hamilton St. Allentown, Pa. 18105
Phone 215-821-8111

Lebanon Valley Auction

Tuesday, March 6
385 Head of Cattle

Compared with last weeks market, slaughter steers about steady. Slaughter cows steady to \$1 higher. Slaughter bulls unevenly steady.

STEERS: Choice 1050 - 1200 pound slaughter steers 44.10 - 46.10; Good 41.25 - 43.85; Standard 39.00 - 41.00; Utility (few) 37.85 - 38.85.

HEIFERS: Good and Choice 39.50 - 42.85, individual at 43.35; Standard (few) 39.50 - 39.85.

COWS: Utility and High Dressing Cutter 33.50 - 36.00; Cutters 31.50 - 33.60; Canners 29.00 - 31.75; Shells down to 26.85.

BULLS: Choice (few) 43.75 - 44.00; Good 40.75 - 43.50; Utility and Commercial 38.85 - 43.25; Cutters (few) 35.00 - 37.85.

268 Head of Veal Calves
Prime (couple) 71.50 - 72.50; Choice (few) 68.00 - 71.00; Good 64.00 - 66.00; Utility 90 - 120 pounds 45.00 - 51.00; 70 - 85 pounds 41.00 - 44.00.

FARM CALVES: Holstein Bulls 85 - 120 pounds 58.00 - 79.00; Holstein Heifers 85 - 140 60.00 - 119.00.

New Holland Horse Auction

Monday, March 5

Reported receipts of 527 head of horses, mules and ponies; market steady with last weeks market

Load Kansas riding horses, 170-295.

Load Illinois driving horses 295-660; few riding horses 195-225.

Load North Carolina work horses 210-370.

Load Ohio work horses, single, 280-335; pairs 610-630.

Load Ohio riding horses 175-660.

Load Kansas riding horses 140-335.

Local work horses 275-380; mules 175-330; driving horses 175-700; riding horses 160-220; better horses 265-520; lightweight killers 9-14; heavyweight killers 15-17.

Mare ponies 15-35; colts 5-8; geldings 10-30; larger ponies 40-65.

Futures Trading

Closing bids as of Thursday, March 8

	Chicago Cattle	Chicago Hogs	New York Maine Potatoes	Chicago Fresh Eggs
March			7.35	46.95
April	46.10	37.75	8.05	51.70
May			8.85	48.30
June	46.00	37.75		50.50
July		37.60		52.90
August	44.95	35.70		53.50
September				58.15
October	44.05	33.35		54.75
November			3.57	56.75
December	43.65	32.65		56.75
February '74	43.55	32.75		
April	43.65	30.25		

Trend—Cattle are stronger, Hogs are lower, Potatoes are stronger, and Eggs are weaker.

a-asked b-bid n-normal

Markets provided by Commodity Dept., Reynolds Securities, Inc.

Pa. Auction Summary

This week begins a new LANCASTER FARMING feature, the Pennsylvania Auction Summary. This weekly summary is a report of 19 Pennsylvania Livestock markets compiled by the Pennsylvania Department of Agriculture.

March 2, 1973

CATTLE 7750

Compared with 5835 head last week, and 6436 head a year ago. Slaughter steers mostly 50c to 75c higher. Slaughter cows uneven, averaging about steady. Slaughter bulls uneven, mostly strong to \$1.50 higher.

STEERS: High Choice and Prime 45.75-47.00; Choice 43.50-46.30; Good 40.50-43.85; Standard 37.75-41.50; Utility 36.00-38.00.

HEIFERS: Choice 42.00-43.50; Good 38.00-42.00, Standard 36.00-39.50

COWS: Utility and High

Dressing Cutter 32.50-36.75; Cutters 30.50-33.85; Canners 28.00-32.00; Shells down to 25.00.

BULLS: Choice 42.00-43.85; Good 40.00-42.00; Utility and Commercial 36.75-42.50; Cutters 33.75-36.75.

FEEDER CATTLE: Choice 350-550 pounds feeder steers 50.00-55.00, few to 65.00; Good 400-700 41.00-50.00; Medium 400-800 35.50-45.00.

CALVES 4153

Compared with 3927 head last week, and 5003 head a year ago. Vealers mostly steady to \$1 higher.

VEALERS: Prime 72.00-76.50; Choice 68.00-73.50; Good 61.00-69.00; Standard 53.00-68.00, Utility 90-120 pounds 45.00-54.50; 70-85 pounds 40.00-46.00. Farm Calves: Holstein bulls 85-120 pounds 48.00-76.00; Holstein heifers 80-145 pounds 60.00-111.00, few to 115.00.

HOGS 6897

Compared with 6887 head last week, and 8898 head a year ago Barrows & Gilts \$1.75 to \$2 higher.

Barrows & Gilts: US 1-2 200-235 pounds 40.00-40.60; 2-3 190-245 39.10-40.00, 2-4 180-260 38.00-39.35, 2-4 120-185 32.00-37.85

SOWS: US 1-3 300-550 pounds 30.00-34.50; 2-3 300-650 29.00-32.00 BOARS 24.50-28.75

FEEDER PIGS 701

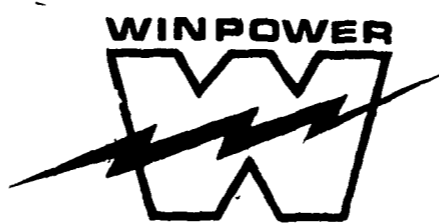
Compared with 736 head last week, and 1074 head a year ago US 1-3 20-35 pounds 15.00-25.00 per head; 1-3 35-50 21.00-31.00; 1-3 50-75 28.50-35.00 per head

SHEEP 477

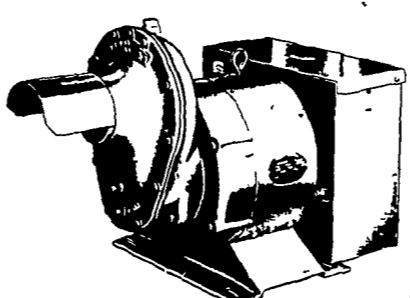
Compared with 412 head last week, and 613 head a year ago. Woolled slaughter lambs 50c to \$4 higher.

Choice 70-100 pounds woolled slaughter lambs 38.50-41.00; Good 60-100 32.00-39.00; Utility 55-85 28.00-31.50

Slaughter ewes 8.00-18.00.



TRACTOR DRIVEN ALTERNATORS



WORLD'S LARGEST MFG. OF TRACTOR-DRIVEN ALTERNATORS

PTO Units Available From 7 KW to 60 KW 20 Year Warranty

POWER WHEN YOU NEED IT MOST

1800 RPM

INSURE YOUR FARM OPERATION AGAINST POWER OUTAGES. HAVE EXPERIENCED PEOPLE INSTALL & SERVICE.

CALL NOW

INSIST on a FREE WINPOWER DEMONSTRATION at YOUR Farm

Before You Buy ANY Tractor Driven Alternator

L. J. EDWARDS
FARM SALES, Manager



ELECTROMECH
ELECTROMECHANICAL SERVICE

ROUTE 222, EPHRATA, PA. 17522

PHONE (717) 733-7911

LP-NATURAL GAS GASOLINE DIESEL ENGINE GEN. SETS TO 200,000 WATTS

ELECTRIC MOTOR • GENERATOR • POWER TOOL SPECIALISTS



SELL YOUR BUTCHER HOGS DIRECT TO
Ezra W. Martin Co.
Garden Spot Quality Meats
Call AL SHAFFER At
Lancaster, Pa.
717-397-5113
Evenings (215) 779-3847