

Poultry Market Reports

Eastern Pa. and N. J.

Wednesday, February 21
LIVE POULTRY

Prices of light type hens unchanged though firm. Demand good for adequate through lighter offerings than past several weeks. Offerings of heavy type hens short of a fairly good demand.

Prices paid at farm: Light type hens 6-9½, mostly 9-9½ in Pa., mostly 8-9 in N.J. Heavy type hens TFEWR

Delmarva

Wednesday, February 21

BROILER-FRYER MARKET

Ready to cook movement fair to good though occasionally less aggressive than last week in some terminal markets. Slaughter schedules fairly well maintained. Less than trucklot prices mostly unchanged on both plant and US Grade A Live supplies short of full needs at desirable weights. Undertone very firm.

Negotiated trucklot prices 2-3 lb ready to cook broiler-fryers for delivery to next week; Plant Grade 42 Pool trucklot prices for Thursday arrival US Grade A 41-44, mostly 41-42; Plant Grade 40-42, mostly 40-41.

Weekly New York Egg Market

(From Monday, February 19th to Friday, February 23rd)

	Mon.	Tues.	Wed.	Thurs.	Fri.
WHITE					
Fcy. Ex. Large	46½	46½	47½	47½	47½
Large	45½	45½	46½	46½	46½
Mediums	41½	41½	42	42	42
Pullets	38	38	38	38	38
Peewees	28	28	28	28	28
BROWN					
Fcy. Large	47	47	48	48	48
Mediums	Unquoted				
Pullets	Unquoted				
Peewees	Unquoted				
Standards	40	40	41	41	41
Checks	29	29	29	29	29

Long Tone — Full steady.

Copyright 1973 Urner Barry Publications

Correction

The Egg Prices on white large last week should have been 45½ cents each day from Tuesday, February 13th to Friday February 16th instead of 46½ cents. These prices were quoted to Lancaster Farming incorrectly by Urner Barry Publications, Inc.

Egg Market

Tuesday, February 20
NATIONAL EGG MARKET
ATA GLANCE

The sentiment is steadier under a little improvement in movement. Some stocks are moving towards retailers on a pre-committed basis and these selling prices are competitive. New buying interest is irregular and lacks real aggressiveness. Mediums are ample in numerous Eastern quarters but clearing closer in the Far West with parts of the South in better balance. Large are unevenly distributed but fully adequate overall for inter-area shipments.

NORTH ATLANTIC: Prices were unchanged in New York, Pennsylvania, and New Jersey, advanced 1c on brown extra large in New England. Terminal market stocks were lighter due partly to the three day weekend. Country point offerings were sufficient but lighter than last week. Supplies of large was mostly adequate with mediums slightly surplus. Movement is fair but mostly based on prior commitments.

BALTIMORE - Cartoned Eggs, Prices to Retailers, State Graded - Minimum One Case Sale
Large 52.5-58 M 53-55 Medium 48 5-55 M 49-51

Regional Hay Prices

Monday, February 19, 1973
(All hay No. 2 and better prices paid by dealers at the farm price per ton.)

Hay and Straw steady.	
Alfalfa	50.00-70.00
Mixed hay	35.00-55.00
Timothy hay	30.00-45.00
Straw	25.00-32.00
Mulch	15.00-25.00

Lancaster Farming

Lancaster County's Own Farm Weekly
P.O. Box 266 - Lititz, Pa. 17543
Office: 22 E. Main St., Lititz, Pa. 17543
Record-Express Office Bldg.
Phone: Lancaster 717-394-3047 or Lititz 717-626-2191
Richard E. Wanner, Editor
Subscription price: \$2 per year in Lancaster County; \$3 elsewhere

Established November 4, 1955
Published every Saturday by Lancaster Farming, Lititz, Pa.

Second Class Postage paid at Lititz, Pa. 17543
Members of Newspaper Farm Editors Assn., Pa. Newspaper Publishers Association, and National Newspaper Association.

Farmers Urged to File Crop Reports

The Lancaster County Agricultural Stabilization and Conservation committee held its annual information meeting for farmers on Wednesday afternoon at the Farm and Home Center.

Miss Dorothy Neel, director of the local ASCS office, explained the key changes in this year's wheat and feed grain programs. Nationally, the program is being administered to set aside some 17 million acres of feed grains land, and another 3 million acres of wheat. This compares with approximately 55 million acres set-aside in 1972.

The reason for the big reduction in set-aside acreage is the need for more feedstuffs throughout the country. Lancaster County farmers have traditionally not been big recipients of large set-aside

payments. It was explained during the meeting that local farmers need the crops they grow on fields they might otherwise set aside. The economics of feeding livestock take precedence over any payments from government sources for nearly all local farmers.

It was pointed out at the meeting that in order to remain eligible for crop subsidies, farmers must supply a record of acreage devoted to crops every year. This is true whether or not the farmer applies for the subsidy money. Miss Neel pointed out that while a farmer may not be interested in government subsidies, his crop history could become an important factor if he should decide to sell his farm. A potential buyer could not apply for subsidies unless the history were kept updated yearly.

Fogelsville

Tuesday, February 20

Heavy type hens 18-30, mostly 20-25; Pullets 28-34½, mostly 32-33; Roasters 34-35; Capons 29-36; Ducks 32½-45; Geese 33-37; Drakes 25½-52; Turkeys (tom) 27; Turkeys (hen) 33; Rabbits 51-71, mostly 68-71; Guineas 49-60, mostly 55; Pigeons (per pr.) 1.61-4.55.

Total coops sold 386.
Auction every Tuesday. Poultry received Monday 7 P.M. to 10:30 P.M., Tuesday 7 A.M. to 12 Noon. Sale at 11:30 A.M.
Directions - Take Rt. 22 thruway. Exit at Fogelsville. Exit. North on stoplight in Fogelsville. Turn left, proceed 1 mile.

In the Kitchen

LOW CHOLESTEROL WHITE SAUCE

- ½ cup instant nonfat dry milk
- ¾ cup cold water
- 2 tbsps. safflower oil
- 2 tbsps. flour
- 1 chicken bouillon cube
- ¼ tsp. salt
- dash or two pepper or paprika

Combine dry milk and water. Blend oil and flour together in small saucepan. Stir in milk, crumbled bouillon cube, and seasonings. Cook and stir until sauce boils and thickens. Makes about one cup.



THE OLD FARMER'S ALMANAC

FEB. 26-MARCH 4

Stick to your winter flannels.

Don't wait until last minute, pay your income taxes now... Buffalo Bill born Feb 26, 1845... New Moon Sunday, March 4... March comes in more like a lion than a lamb... Average length of days for week, 11 hours, 16 minutes... Skunks are emerging... Lindbergh baby kidnapped March 2, 1932... First Victory ship launched Feb 29, 1944... International Iceberg Patrol starts out this week... Everybody's girl is nobody's girl.

Old Farmer's Riddle: What is everyone doing at the same time? (Answer below)



Ask the Old Farmer: How did the oldtimers forecast the weather before radio and TV weathermen? Or for that matter before The Old Farmer's Almanac? Was anything reliable? H.F., Belows Falls, Vt.

Very little. If you didn't have The Old Farmer's Almanac (and it's been around since 1792), you could have kept a pig. When he digs a hole in the ground, it's going to be hot. When he chews straw it's going to rain. The alternative was what folks used to do on Cape Cod; let her storm and think about something else.

Home Hints: A good way to stay within a food budget is to remember never go to the market hungry. To keep small bugs out of flour, try keeping it in the freezer, it never freezes. **Riddle Answer:** Growing Older.

OLD FARMER'S WEATHER FORECASTS

New England: Light snow along coast to start, then 5-7" inland; cloudy and cold with flurries latter part.
Greater New York-New Jersey: Week begins cloudy, then light snow by midweek; end of week cloudy and seasonably cold.
Middle Atlantic Coastal: Partly cloudy and mild at first, then light rain; cloudy and seasonably cold latter part.
Southeast Coastal-Piedmont: Variable cloudiness to start, then scattered showers; rain and colder by week's end, then 3-5" snow inland over weekend.
Florida: Cloudy and warm at first, then light rain; rain continues through end of week and cooler.
Upstate & Western N.Y.-Toronto & Montreal: Snow first half of week, 3-5" by midweek; latter part seasonably cold and clear in east, partly cloudy with flurries in west.
Greater Ohio Valley: Light rain to start, then rain occasionally mixed with snow; end of week clear and mild.
Deep South: Poor week; rainy and cold throughout.
Chicago and Southern Great Lakes: Light snow, mixed with rain in southeast, continues all week.
Northern Great Plains-Great Lakes: Snow, 8-10" at first, then clearing and colder; light snow latter part, then cloudy and mild.
Central Great Plains: Scattered showers to start, then partial clearing and colder; light snow latter part, then warmer.
Texas-Oklahoma: Rain throughout week, mild at first then moderately heavy latter part.
Rocky Mountain Region: Week begins cloudy and seasonably cold, then light snow by midweek; 1-3" snow latter part, then clearing.
Southwest Desert: Cooler at first, lows near freezing, then warmer; end of week clear and mild, highs near 70.
Pacific Northwest: Rain mixed with snow to start, then partial clearing; mixed rain and snow latter part, then changing to rain.
California: Light rain and cool through most of week; end of week much warmer.

(All Rights Reserved, Yankee, Inc., Dublin, N.H. 05444)

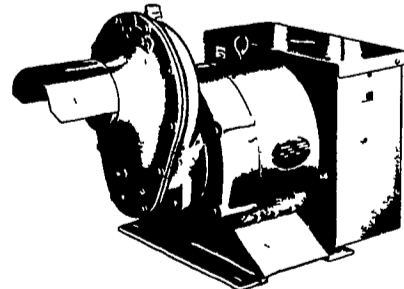
YOUR LASSO DISTRIBUTOR ROYSTER CO.

500 Running Pump Road Lancaster, Pa
Phone 717-299-2541

WINPOWER



TRACTOR DRIVEN ALTERNATORS



WORLD'S LARGEST MFG. OF TRACTOR-DRIVEN ALTERNATORS

PTO Units Available From 7 KW to 60 KW 20 Year Warranty

POWER WHEN YOU NEED IT MOST

1800 RPM

INSIST on a FREE WINPOWER DEMONSTRATION at YOUR Farm

Before You Buy ANY Tractor Driven Alternator

L. J. EDWARDS FARM SALES, Manager

INSURE YOUR FARM OPERATIONS AGAINST POWER OUTAGES. HAVE EXPERIENCED PEOPLE INSTALL & SERVICE.

CALL NOW



ELECTROMECH

ELECTROMECHANICAL SERVICE
ROUTE 222, EPHRATA, PA. 17522
PHONE (717) 733-7911

LP-NATURAL GAS GASOLINE DIESEL ENGINE GEN. SETS TO 200,000 WATTS

ELECTRIC MOTOR • GENERATOR • POWER TOOL SPECIALISTS