

Easter Seal Campaign Announced, Goal Set

The Easter Seal Society of Lancaster County has set a goal of \$65,000 for its 1973 fund-raising campaign, set to officially kickoff March 1 and run through Easter Sunday, April 22. The campaign provides funds for the rehabilitation of Lancaster County's handicapped children and adults.

Under a campaign message that asks, "Did You Ever Want Something So Bad It Hurt?", the local Easter Seal Society begins its 1973 year of service to the handicapped of Lancaster County.

As in past campaigns, this year's drive will rely on mail campaign contributions, backed by returns from Buck-A-Cup Coffee Day which is sponsored annually by the Lancaster County Restaurant Association.

Easter Seal Society officials point to a growing demand in the County for services provided by Lancaster's Easter Seal Center. In 1972, the Center treated more than 2,000 patients representing all age groups from infants to the elderly, a 15 percent increase over the previous year. The society's campaign goal last year was \$61,000.

Campaign proceeds now support a wide range of Easter Seal programs, including physical, speech and occupational therapy, amputee services, a cerebral palsy clinic, electrodiagnostic services, preschool education, a horsemanship program for handicapped children, a summer camp, boys' and girls' scouting groups and a comprehensive information referral and volunteer service program.

Animal Waste Seminar Planned for March 13

An Animal Waste Seminar will be held from 9 a. m. to 10 p. m. Tuesday, March 13 at the Farm and Home Center.

There are three identical seminars planned during the day - one at 10 a. m., another at 2 p. m., and the final one at 8 p. m. Topics to be discussed will include: Handling of Liquid Manure; Equipment for Liquid Manure; Economics of Liquid Manure; Construction of Liquid Manure Storage, and Environmental Regulations. The latest equipment for handling liquid manure will be on display.

Speakers for the event will be Roger Grout, Penn State Extension Service; Eugene Wentzel, Environmental Resources, Reading; Harold M. Zimmerman of Zimmerman Industries, Inc., Ephrata RD1; Jay Foreman, Lititz dairyman, and Lloyd Espenshade, Manheim.

The Seminar is being sponsored by Zimmerman Industries, Inc., Ephrata RD1.

TRY A
CLASSIFIED AD!

YOUR BEST CHOICE FOR THE NORTHEAST . . .

WL 305

WL 306

WL 210

Highest Yielding
Alfalfa in Penna.
and Maryland!

*Yielded 6.69 Tons of Forage in 1972
12% Moisture-3 cuttings

**Now Available through
your local dealer!**

- Resistant to Bacterial Wilt and Anthracnose
- Tolerant to Alfalfa Leaf Hopper and Pea Aphid
- Rapid growing — Stand persistent — Dark Green color — Fine Stems
- Excellent seeding vigor and stand establishment
- Developed by Waterman-Loomis Co., Specialized Alfalfa Breeders

BEACHLEY-HARDY

FIELD AND GRASS SEEDS

Shiremanstown, Pa. 17091

Dauphin Deposit Will Open Office in East Pennsboro

Dauphin Deposit Trust Company will establish a new banking office in East Pennsboro Township just south of the Summerdale Plaza Shopping Center on Routes 11 and 15.

E M Green, chairman of the board, and W. D. Lewis, president, said the new banking office was approved by the board of directors of the Federal Deposit Insurance Corporation.

They said the Pennsylvania Department of Banking approved an application to establish an office south of the Summerdale Plaza Shopping Center on December 29.

It was announced that temporary banking facilities, with drive-up banking service available, will open Monday and construction will begin immediately on a permanent, full-service bank office, expected to be open late this summer.

"Dauphin Deposit is committed to playing a major role in the accelerated development of East Pennsboro Township," Lewis said of the new banking office.

Donald L. Beers, assistant treasurer who has managed the Paxton and Colonial Park offices in recent years, will be manager of the new office.

Dauphin Deposit officials noted the new facility will be the banking firm's first in East Pennsboro Township, although it operates five other offices on the West Shore.

"We believe that offering a full range of banking service to the extended West Shore communities will be of real value and assistance to those persons and firms who are developing East Pennsboro Township, not only in providing service for them, but also in serving area residents and businesses which will be moving into the area," Lewis noted.

He said Dauphin Deposit is "confident that residential, commercial and industrial expansion will continue to occur in East Pennsboro Township," following completion of the Route 81 bridge connecting Dauphin and Cumberland counties.

"The tie-in with I-83 will undoubtedly add impetus to the township's expansion," Lewis added.

The opening of the Summerdale office will bring to 32 the number of banking offices Dauphin Deposit operates in Dauphin, Cumberland, Lancaster, Lebanon and York counties.

TRY A
CLASSIFIED AD!
PHONE 626-2191
OR 394-3047

**MORE MILK • MORE MEAT
• MORE PROFIT**

WITH

MADISON SILOS

- Feed high-quality, nutritious, corn and grass silage all year for **more milk, more meat and more profit**
- Low original cost
- Low upkeep cost
- More than 60,000 Madison Silos in use



MADISON SILOS

Div. Chromalloy American Corp.
1070 Steinmetz Rd.
Ephrata, Penna. 17522
Ph. 733-1206

LOCAL DEALERS

	Frank Snyder	
Akron		859-2688
	Caleb Wenger	
Quarryville		548-2116
	Landis Bros. Inc.	
Lancaster		393-3906
	Carl L. Shirk	
Lebanon		867-3741
	Sollenberger Farm Supply Centerport, Pa. Ph. 215-926-7671	

MORE HOUSE FOR LESS MONEY!

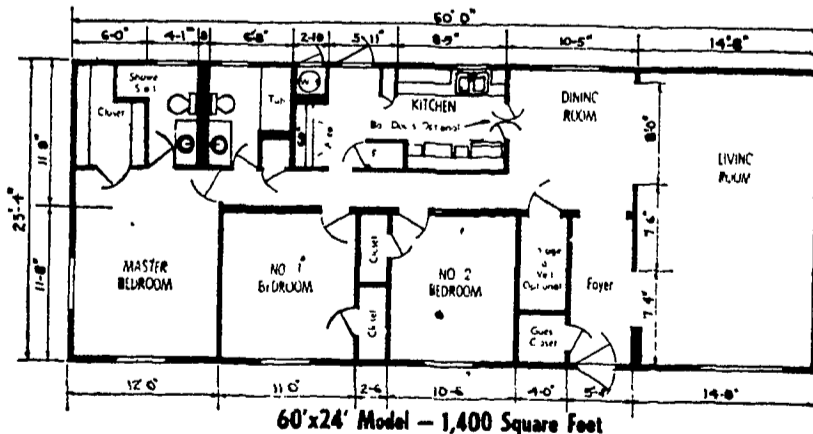
Paul's Can Deliver and Erect This

BIG This
24'x60' For
Three Bedroom Home Only



Gable optional at extra cost

Expertly Designed—Superbly Built—Economically Priced



- * Carpet in living room, dining room & hall
- * 2 Baths
- * 42 gallon H.W.H.
- * 14 cubic ft. refrigerator
- * 30" Gas range
- * Gable optional at extra cost
- * 1/4" Paneling throughout
- * Loads of storage space
- * 235# Shingled roof
- * Washer & dryer area
- * Curtains & drapes
- * Maintenance free exterior & interior

Mortgages available up to 25 years — MODEL ON DISPLAY

PAUL'S MOBILE HOMES Inc.

W. Main Street (Rt. 230)
653-1476

OPEN 9-9 Daily

Mount Joy, Pa.
9-5 Sat.