

CPA's Explain What Income Is Taxable

Is all the income one receives from all sources subject to the same Federal income tax? No, says the Pennsylvania Institute of Certified Public Accountants. Some types of income are exempt from taxation, while others are taxed at a rate different than for ordinary income.

The CPAs say the types of income to be included with salary and wages as part of one's adjusted gross income include:

Tips, bonuses, commissions and incentive payments.

Dividends (except for the first \$100 and except for so-called dividends on insurance policies, which are actually rebates of premiums and not taxable).

Supplemental payments by one's employer under a guaranteed annual wage plan.

Interest received on bank deposits, loans, etc.

Casualty or health insurance benefits over the amount of loss or the cost of treating the illness.

Gambling winnings and prizes won in contests (after subtracting gambling losses and the costs of participating in the contests).

Short-term capital gains on investments sold after being held six months or less.

One half of long-term capital gains (realized on the sale of investments held longer than six months).

The CPAs say that, with certain exceptions, the types of income that can be included from one's adjusted gross income on tax returns include:

Salary or wages up to \$20,000 earned outside the United States if the taxpayer was a bona fide foreign resident for the entire taxable year.

Sick pay up to \$100 a week if one's employer has an established wage continuation plan.

Social Security benefits.

That portion of retirement income resulting from one's own contributions to a pension fund, if the money contributed was taxed before being paid in.

Food and lodging provided by an employer, if it was for his convenience.

Unemployment benefits paid by a state or under the Railway Unemployment Insurance Act or

the program for Federal employees.

Strike benefits paid by a union under certain conditions.

Legacies. (Estate taxes are paid by the estate.)

Gifts or prizes that did not require the recipient's participation or the payment of a fee.

The CPA Society advises that, because of the many qualifications attached to some of these exclusions, care should be taken in claiming them.

Sawdust Is Good For Icy Walks

Coarse sawdust is one of the best substances to use on icy walks. It may be available at nearby sawmills and from firewood dealers, says N. Henry Wooding, Extension agricultural engineer at The Pennsylvania State University. It may be necessary to use something on icy walks to prevent serious injury - use coarse sawdust if it can be readily obtained.

Mechanical Potato Bagger Successful

Potatoes can be bagged and the bags sewn shut by machines without sacrificing market quality or incurring significant physical damage.

Mechanizing food handling methods increases efficiency while reducing physical damage, hence a less expensive, higher quality produce is placed on the market. Accordingly, several potato packing sheds in California have installed machine fillers and machine closers for bagged potatoes. The 100-pound burlap bags used for this process are somewhat larger than conventional ones, which are packed manually and closed by hand sewing.

But employing machine-filled and sewn bags worried many potato packers. The larger bag size permits tubers to move about more within the bags during transit. Such movement would cause physical damage to the tubers. Also, the larger size allows bags to "relax" more when loaded in the railcar, filling more voids in the load, and possibly affecting air movement

which in turn would affect transit temperature—a key factor in preserving potato quality.

To alleviate these apprehensions, horticulturist Joseph K. Stewart, Fresno, Calif., and plant pathologist Jacob Kaufman, Belle Mead, N.J., both of the USDA's Agricultural Research Service, compared the two handling methods in shipping tests from Kern County, Calif., to Jersey City, N.J.

The scientists shipped eight test cars, loading half of each test car with 300 machine-filled and sewn bags, the other half with 300 hand-sewn bags. All bags were loaded and placed conventionally with hand-sewn bags stacked at the car's engine end in four cars and at the brake end in the remaining four cars.

Thermometers, placed in potato bags at strategic places in each car recorded load and inside air temperatures. The scientists also measured carbon dioxide and oxygen levels in the cars at destination, and evaluated sample bags for product quality.

Test results show transit temperatures are essentially the same in both hand-sewn and machine-sewn containers. During the tests, average individual load transit temperatures ranged from 45 degrees to 52 degrees F for hand-sewn bags and 44 degrees and 54 degrees F for machine-sewn bags. All thermostat settings were 42 degrees.

In general, accumulation of respiratory carbon dioxide is not excessively high. Potato quality does not appear to be affected by the rail car carbon dioxide levels which accrue in transit. Oxygen levels are now low enough to affect the potatoes either.

The crucial question on potato market quality under the new handling conditions has been answered. Potatoes shipped in the two types of bags did not differ significantly in moderate or severe cutting or crushing, in bruising, internal blackspot, browning, or soft rot.

Since mechanized and manual potato handling provide equal product quality, potato packers can decide which bag and which system to use on the basis of economic factors and the compatibility of the handling system with their own operations.

Kreider Holstein Herd Classified

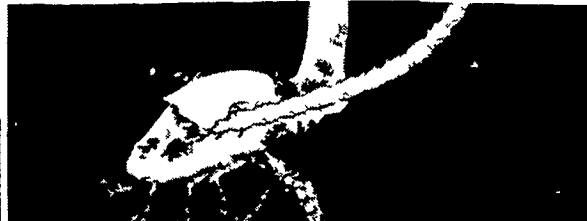
Registered Holsteins in the herd of John E. Kreider, Lancaster were recently classified for body conformation by Lloyd Boyd, an official classifier of the Holstein-Friesian association.

Including animals previously scored, the Trout-Spring herd has three Excellents, 10 Very Goods and 26 Good Pluses.

Dairymen enrolled in this herd improvement program receive a numerical score for each animal evaluated. The True-Type Holstein represents theoretical perfection and has a value of 100 points on the classification score card. Each animal is scored, receiving a rating of Excellent (90 points or more), Very Good (85 through 89), Good Plus (80 through 84), Good (75 through 79), Fair (65 through 74) or Poor (64 points or below).



CUTWORMS?



WIREWORMS?



WHITE GRUBS?



SEED CORN MAGGOT?

BELT® BASIC SOIL INSECTICIDE OF THE '70s. NEW IMPROVED GRANULES GUARANTEED TO FLOW FREELY.

GUARANTEE

EFFECTIVE INSECT CONTROL AND FREE FLOW GRANULES

Should Belt 33G fail to effectively control the soil insects listed on the label, when used specifically according to use directions shown, or should Belt 33G not flow adequately through a standard spreader that has been properly adjusted, maintained, and in good working condition, Velsicol will refund an equivalent amount of Belt 33G insecticide to that used on acreage where Belt performance was not satisfactory (verified by paid invoice showing price and quantity purchased) if the following conditions are met:

- Grower has completed and returned the guarantee registration card available at his dealer's within 45 days of Belt 33G purchase.
- Notice of dissatisfaction of product performance and handling covered by this guarantee must be submitted in writing within 60 days of application.
- A qualified Velsicol representative must be assured that the purchaser used Belt 33G according to label directions. The Velsicol representative must have the opportunity to observe insect control or handling performance to determine whether or not Belt provided economic control or was applied with properly maintained equipment.

IMPORTANT: Refund is limited to acreage on which Belt performance or handling was not satisfactory. Be sure to fill out and mail the registration card, available at your chemicals dealer, to verify your purchase of Belt 33G soil insecticide.

The broad-spectrum soil insecticide, Belt, is growing rapidly in popularity. Controls the widest range of soil insects that attack corn.

Belt protects corn till harvest, regardless of weather. Little hazard to feed, water, wildlife, when used properly, Belt is comparatively low-toxic. Its active ingredient is covered by a tolerance on corn of 0.3 ppm.

Velsicol guarantees flowability of Belt 33.3G granules. Easy to handle, it's applied and incorporated at or prior to planting.

In "no-till" planting, a once-over application proves especially effective and economical. Belt stays in the soil . . . and works!

The emulsifiable concentrate, Belt 72ECF, is also available if you prefer liquid application.

You can have confidence in Belt. It's chlordane at its best, for economical, broad-spectrum control. At your ag chem dealer's.

BELT® from VELSICOL

VELSICOL CHEMICAL CORPORATION
341 East Ohio Street, Chicago, Illinois 60611

