

# ★ Public Sales Register ★

(Continued From Page 36)  
Dry Goods, Food, Tools, etc.

SAT. MARCH 3- Public Sale of Farm Equipment located bet-

ween Ephrata and Farmersville at Metzler Road, next to Metzler's Mennonite Church. Sale by Clayton L. Oberholtzer, John E. and Paul E. Martin, Auctioneers.

THURS. MARCH 8 - 12 Noon Public Sale of Farm Machinery located 2 miles west of Route 41 at Octorara High School, 3 mile south of Atglen, Chester Co. Terms by Carl M. Horst; Kreider and Diller, Auctioneer.

Mr. & Mrs. Amos Jutzi; Frailey and Diller, Auctioneers.

SAT. MARCH 10 - 10:30 A.M. Public Sale of Valuable Farm Machinery, Butchering Equipment and Personal Property located at RD1, Windsor, Penna. in Windsor Twp. approx. 2 miles north east of Windsor Manor School. Terms by Mervin Hilt; Jacob A. Gilbert, Auctioneer.

THURS. MARCH 8- 11:30 Public Sale of Farm Equipment located 3 miles Southwest of Elizabethtown along Rte. 241 (Bainbridge Road). Sale by Clarence S. Hilsher, Raymond Miller, Auctioneer.

FRI. MARCH 9- 11 A.M. Public Sale of 66 Registered and Grade Holsteins, full line of Machinery, located 10 mile North of Danville, 2 mile North of Rte. 54. Sale by

SAT. MAR. 10- 11 A.M. Public Auction of 52 Holstein open and bred Heifers and Farm Equipment by H. Arthur Crew, owner, Kennedyville, Md. H. Rudnick and Sons, sales Managers of Galena, Md.

SAT MARCH 10 - 9 A.M. Auction of Farm Machinery, Household Goods, Hay and Straw and Donated Goods by the Gordonville Fire Co., at the Gordonville Fire House, Gordonville, Pa. Donations accepted and goods will be sold on commission. For Pickups call 768-3208 or 768-8971. Ira Stoltzfus, Auctioneer.

MON. MARCH 12- Public Auction All Day Spring Consignment Sale to be sold on the premises located from Ephrata, west on Route 322, 1/2 mile to Wood Corner Road, turn South, first farm on left. Terms by Paul Z. Nolt, Lititz RD4, Pa. John E. and Paul E. Martin, Auctioneers.

MON. MARCH 12- 10 A.M. Public Sale of New and Used Farm and Industrial Equipment located at Emigsville, Pa. 4 miles North of York-Route 181 N. Sale by York Co. Farm and Industrial Equipment Co., Inc., Box 222, Emigsville, Pa. 17318

TUES. MARCH 13- 10 A.M. Public Sale of Holstein Dairy Cows and Farm Equipment located 3 miles west of Millerstown, turn off Rt 30 west of Lancaster onto Donerville Rd. Travel South to Charlestown Road Sale by Amos M. Groff; Auctioneers Carl Diller and J. Everett Kreider.

TUES. MAR. 13- Public Sale of Farm Equipment and Household goods midway between Blue Ball and Honey Brook, 1/2 mile north of 322 at Beartown. Sale by George Weaver; Martin Auctioneers.

WED. MARCH 14 - 11 A.M. Glen-Bar Complete Registered Holstein Dispersal located 20 mile South of Lancaster, 4 mile South of Quarryville, 1 mile West of Route 222 on Black Bear Road, Lancaster Co., Pa. Terms by Harry G. Kreider, J. Everett Kreider and Carl Diller, Sales Managers.

THURS. MAR. 15- Public Sale of 2 Farm Equipment located along Rt. 222, turn South 2 miles to Richland and the Country House Restaurant along Rt. 501 turn East 2 miles to Richland Sale by Lebanon Valley Implement Co. John E. and Paul E. Martin, Auctioneers

SAT. MARCH 17 - 10:30 A.M. Public Sale of Farm Machinery and Tools located 1 mile East of Route 272 from Marron's Service Station, adjacent to Tanglewood Golf Course, 4 mile West of Quarryville Cemetery Terms by Charlie K. Herman, Kreider and Diller, Auctioneers

SAT. MAR 17- Noon Public Auction of Farm Equipment by Edgar D. Lusby, owner, Kennedyville, Md H Rudnick and Sons, Sales Managers of Galena, Md.

SAT. MARCH 17- 10 A.M. Public Sale of Farm Machinery, Car, Carpenter Tools, Building Materials and Some Antiques located approx 3 miles east of the Village of Cross Roads on the road to Laurel in East Hopewell Twp., York Co., Pa. Sale by Mrs.

(Continued On Page 38)

## QUALITY DAIRY CATTLE FOR SALE

BLACK and WHITE HOLSTEIN FARMS  
2220 Dairy Road Lancaster, Penna.

100 REGISTERED & GRADE HOLSTEINS 100 HEAD  
On hand at all times

CANADIAN—WISCONSIN—MINNESOTA

All cattle hand picked for type, conformation and perfect udder development, most of them with good production and B.F. records. NOTE: Will deliver from 4 head to a carload subject to your approval to your farm at anytime.

Pennsylvania's Largest Sales Pavilion

Dairy Cattle Auction Sale 3rd Friday Night Every Month

CHARLES C. MYERS, Owner. Phone 717-569-2106  
Park Myers, Sales Mgr. Private Sales Daily

## PUBLIC SALE

OF FARM EQUIPMENT

SATURDAY, MARCH 3, 1973

11:00 A.M.

Location: One-Fourth Mile East of Strasburg. South of Route 896 Along Bishop Road. One-Half Mile South of the Strasburg Railroad. "Watch For Sale Signs"

1964 Chevrolet Pick Up Truck with Racks. 1954 Chevrolet Truck with Good 12' Body. THE FOLLOWING INTERNATIONAL (FARMALL) EQUIPMENT: No. 706 Diesel Tractor with Wide Front, Fully Equipped, Super M Tractor with Power Steering, No. C Tractor with Cultivators and Tobacco Hoers, No. 1150 Grinder - Mixer; (Like New), No. 450 A 4 Row Corn Planter; with Gandy Insecticide Att., No. 5 Fail Chopper, No. 2 MH Corn Picker, No. 37 Wheel Carried 28 Disc, No. 411 4-6" 3 Pt. Trip Plow, Fast Hitch 3-16" Trip Plow, Fast Hitch 7' Chisel, Cultivator for No. 300 Tractor, 2 Fast-Hitch Mowers, Fash Hitch Subsoiler, No. 401 10' Spring Tooth Harrow, 10' Culti-packer, No 40 Flat Bed Wagon, No. 80 Wagon with 2' Sides, New Holland Wagon Flatbed 2 McCormick Gravity Bin Wagons, Hawk Bilt 175 Bushel Tank Spreader with Hyd. Gate; (Like New), Hawk Bilt 140 Bushel Tank Spreader, New Holland 5' Fail Chopper, New Holland Super 77 Baler, Lillinton 3 Pt. Rotary Chopper, Ezee-Flow 10' Fertilizer Drill, Cross 40' Elevator, Century Fast Hitch Sprayer, Hershey 2 row Transplanter, Meyer 7' Snow Plow, Cardinal 16' Elevator, 2 Sets 24' Single Tobacco Ladders, J.D. Hay Crimper, Tractor Mounted Seeder, 20' Green Chop Wagon, 2 Grieder Tobacco Presses, Platform Scales, 6 Ton Bulk Feed Bin, Feed Carts, 3 Brower 85 Bushel Hog Feeders, Ingersoll Rand Air Compressor, Baler Twine, 3 Ton Good Mixed Hay, 15 Ton Barley Straw, 2 Ton Shelled Corn, Assortment of Outstanding Valuable Tools and other items to numerous to mention.

SALE BY  
MRS. JAMES L. MARTIN

THE FOLLOWING ITEMS WILL BE SOLD AT THE SAME TIME AND PLACE FOR "RAYMOND D. MARTIN". THE FOLLOWING JOHN DEERE EQUIPMENT: No. 620 Tractor, 3 Pt. Hitch & Dual Hydraulic, 4 Row Front Mounted Cultivator, 4 Section 3 Pt. Rotary Hoe, 6 Row Rear Mounted Cultivator, 3 Pt. Spring Chisel, No. F125 3-16" 3 Pt. Plow, KBA 28 Disc Harrow, 3 Section Lever Harrow, 10' 20" Roll Cultipacker, No. 25 A Sprayer No. LF 10' Fertilizer Drill, No. 301 Fertilizer Spin Spreader, No. 694 AN Corn Planter with Insecticide Att., No. FB17 Disc Grain Drill with Band Seed Att., No. 50 Mower, No. 32 Hay Conditioner, No. 224 Baler with No. 5 Fail Shredder Att., 2 J.D. Flat Bed Wagons, 3 Hyd. Cylinders, All the Above was John Deere Equipment., New Idea No. 400 Rake, New Idea No. 205 Flail Spreader with Hyd. Engate, FARMHAND F-85 GRINDER MIXER with MOLASSES ATT., Snowco Grain Cart, 4" 26' Grain Auger, 5 Shendoah 75 Bushel Hog Feeders, 3 Brower 85 Bushel Hog Feeders, and many other outstanding items to numerous to mention.

"Auctioneer's Note" This Farm Equipment is in EXCELLENT CONDITION. You will Probably go a Long Way to find another Line of Farm Equipment in such Good Condition as this. "Don't Miss This Sale"

"Terms Cash"

SALE BY  
MRS. JAMES L. MARTIN

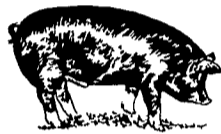
Wilbur H. Hosler, Auctioneer 717-626-5943  
Jay M. Witman AP, Auctioneer 717-665-5735  
Galebach & Hosler, Clerks.

Food By: The Farm Women

## PUBLIC SALE

TUESDAY, FEB. 13, 1973

Will be sold at Public Sale on the premises located 1 mile north of Leola, Pa., on Route 772:



## 225 HEAD OF HOGS & PIGS

100 Head Weighing 60 to 80 Pounds, 125 Head Weighing 40 Pounds, All Home Raised. 30 Head of Bred Gilts, Ready to Farrow, Gilts are Vaccinated for Erysipelas and Lepto. Sale at 1:00 P.M.

TERMS BY

DAVID A. MARTIN

FRANK L. STELLER 656-9055  
ROBERT E. MARTIN 656-7770 — Auctioneers  
DONALD STELLER — Clerk

Not Responsible For Accidents

## PUBLIC SALE

SATURDAY, FEBRUARY 17, 1973

Located 3 miles Southeast of Strasburg along Mt. Pleasant Road leading from Iva to Mt. Pleasant Church, Lancaster County, Pa.

### HOUSEHOLD GOODS AND ANTIQUES

Dining room suite with round extension table and 6 chairs; 6 fiddle back plank bottom chairs; 5 piece parlor suit; 2 blanket chests; New Capello old fashioned black kitchen range; high chair; wooden express wagon; drop leaf table, etc.

Rheems forced hot air heating system, 12,000 BTU, 1 year old; 275 gallon fuel tank; shallow well jet pump with pressure tank, Hydro-hot and GE 50 gallon electric water heaters.

### FARM EQUIPMENT

Farmall A tractor, starter, lights, cultivators, plow, weeder, 1 man tobacco hoer and fertilizer attachment; Farmall F 12 tractor with 7 ft. mounted mower; Gibson garden tractor with 9 H.P. Wisconsin engine, Cultivator tobacco hoers and scraper; John Deere "12A" combine; portable 28 disc with 2-way cylinder; McDeering side rack; 2-175 gallon gas tanks with pumps; 275 gallon water tank; Minnich tobacco press; tobacco lath; corn sheller; air compressor; shaft jack; 3 electric motors; milk cans.

### 1939 CENTURY BUICK

Also for parts or scrap iron-F12 Farmall tractor, double cultipacker, 24 and 28 disc harrows, John Deere corn binder, McDeering manure spreader.

SALE BY  
LESTER HENRY, SR.

SALE AT 12:00 NOON

Abe Diffenbach, Auctioneer  
Refreshment by W.S.C.S. of Wesley Methodist Church of Strasburg

## LLOYD H. KREIDER

AUCTIONEER  
and  
SALES MANAGER

330 West State St.  
Box 2 RD1  
Quarryville, Pa. 17566  
Ph: 786-3394