

Hog Prices

Vintage Auction

Saturday, February 3

HOGS 848: Barrows & Gilts: Mostly 25c to 50c higher. US No. 1-2 200-250 lbs. 35.75-36.00; US No. 1-3 190-240 lbs. 35.00-35.60; Few US No. 2-4 185-190 lbs. 34.50-35.25; Few US No. 2-4 280-315 lbs. 32.00-33.50.

Sows: US No. 1-3 320-550 lbs. 28.10-29.25.

Boars: 25.00-27.50.

Tuesday, February 6

Barrows and Gilts mostly steady.

BARROWS AND GILTS: US 1 200-245 lbs. 35.60-35.85; US 1-2 200-250 lbs. 35.25-35.50; US 2-3 195-255 lbs. 34.85-35.35.

New Holland Auction

Monday, February 5

HOGS 910: Barrows & Gilts: Mostly steady. US No. 1-2 200-240 lbs. 35.25-36.50; US No. 1-3 200-250 lbs. 34.75-35.25; US No. 2-4 260-280 lbs. 34.00-34.75; US No. 2-4 180-195 lbs. 33.50-34.75.

SOWS: US No. 1-3 300-590 lbs. 26.50-29.00

Boars: 26.00-27.50.

Lancaster Auction

Wednesday, February 7

Barrows and Gilts strong to 25 higher.

BARROWS AND GILTS: US 1 205-240 lbs. 36.50; US 1-2 210-235 lbs. 35.50-35.60; US 2-3 200-250 lbs. 35.00-35.50; US 2-3 190-200 lbs. 34.50-35.10.

Lebanon Valley Auction

Tuesday, February 6

162 Head of Hogs

Barrows & Gilts strong to 75c higher. US No. 2-3 190-240 pounds Barrows & Gilts 35.00-35.25, lot 36.00, 2-4 220-250 pounds 34.85-35.00.

Sows: Few US 1-3 350-500 pounds 28.85-29.85, few 2-3 400-500 pounds 28.00-29.00.

8 Head of Feeder Pigs

Lot Utility 50 pounds feeder pigs 19.75 per head.

St. Louis Auction

HOGS: 5000, 50-75 lower, slow US 1-2 200-230 lbs. 35.00-35.50; 1-3 200-230 lbs. 34.50-35.00; 230-250 lbs 34 25-34.75.

Peoria Auction

HOGS: 3500, fairly active, 25 to mostly 50 lower US 1-2 200-230 lbs. 34.75-35.25, 60 head 35.50, 1-3 210-250 lbs. 34.25-34.75; 2-3 240-270 lbs 33.50-34 25.

Lancaster Market

Monday, February 5

HOGS: Barrows and Gilts 50-1.00 higher; Sows scarce.

BARROWS AND GILTS: US 1 200-230 lbs. 36 25-36.75; US 1-2 200-240 lbs. 35.25-35.75; US 2-3 190-255 lbs. 34.75-35.25.

Indianapolis Auction

HOGS: 2000, steady, fairly active US 1-2 200-235 lbs. 35.25-35.50; 1-3 200-250 lbs. 34.75-35.25; 2-3 240-270 lbs. 33.75-34.75.



"The same men who rarely hear the shrill voice of conscience never miss the faint whisper of temptation."—Mrs. Gary Hiott, The Pickens (S.C.) Sentinel.

Lebanon Valley Auction

Tuesday, February 6

344 Head of Cattle

Compared with last Tuesday's market, slaughter steers 25c to 75c higher. Slaughter cows 25c to \$1.50 higher. Slaughter bulls mostly 75c to \$1.25 higher. Choice 1000-1250 pounds slaughter steers 40.85-43.00, Good 38.75-41.00, Standard 36.75-38.50, few Utility 35.00-36.75.

Heifers: Choice 37.75-39.10, few Good 36.25-37.85.

Cows: Utility & High Dressing Cutter 30.75-33.75, few 34.35, Cutters 28.85-31.10, Canners 26.75-28.85.

Bulls: Good 38.50-40.60, Utility & Commercial 36.50-40.00, few Cutters 33.00-35.60.

180 Head of Veal Calves

Prime vealers, individual's 69.50 and 71.00, few Choice 65.00-69.00, few Good 60.00-63.00, few Standard 50.00-56 00, Utility 90-120 pounds 43 00-47.00, 70-85 39.50-43.00.

Farm calves: Holstein Bulls 85-125 pounds 45.00-65.00; Holstein Heifers 90-130 pounds 60 00-85.00.

Omaha Cattle

Thursday, February 8

Weekly 51—Cattle—compared with last weeks close.

Closing prices on slaughter steers and heifers 75-1.00 higher than previous midweek or mostly 50c higher than closing trade on minimal volume Cows mostly 1.00 higher. Bulls strong to 1.00 higher. Small feeder supply 50-1.00 higher.

Four day receipts 19,700 as compared 15,700 previous week and 19,600 a year ago. Steers approximately 44 percent, heifers 34 percent, cows near 10 percent, feeders 7 percent. Fed cattle trade followed rather irregular course as prices advanced sharply forepart of week in reflection of higher carcass prices but part of early advance lost in later trading. Marketings quite well distributed over trading period

Overall finish was fairly attractive with moderate volume high-Choice and Prime steers and heifers included but large share carried moderate to heavy coating of mud and generally showed effects of stress conditions.

Steers: Four loads high-Choice and Prime 1188-1198 pounds 3-444 50-45 00 During the week, high-Choice and Prime 1025-1339 pounds 3-4, 43.50-44 00, 11 loads at latter price Choice 975-1325 pounds 2-4 closed 42.00-43 00. Occasionally 43.25 on clean 1050-1150 pounds while some mostly Choice but very muddy 41.50-41.75. Mixed Good and Choice 950-1250 pounds 41.25-42.00. Good 37 50-41 00, 2-3 Holsteins 1150-1350 37.50-38 25. Standard and low-Good 36.50-37.50

Average cost slaughter steers first three days 42.19 average weight 1132 pounds as compared 40 62 and 1113 pounds previous week and 36 23 and 1129 a year ago

Heifers High-Choice and Prime 888-1136 pounds 2-4 42.50-43 00, load and part loads at latter price Choice 850-1050 pounds 2-4 41 00-42 25 Mixed Good and Choice 800-975 pounds 40.00-41.00 Good 35 50-39 50 Small lots standard and good 33 50-35 50

Cows Utility and Commercial 28 00-31 00 Canner and Cutter 25 00-28 00 Mixed Cutter and low-Utility 28 25-25 00 Shelly Canner 23 00-25 00

Bulls. Utility, Commercial and

U. S. Inspected Livestock Slaughter

Estimated Daily Livestock Under Federal Inspection

	CATTLE	HOGS	SHEEP
Week to date	460,000	1,888,000	136,000
Same period last week	445,000	1,104,000	136,000
Same period last year	460,000	1,134,000	157,000

Futures Trading

Closing bids as of Thursday, February 8

	Chicago Cattle	Chicago Hogs	New York Maine Potatoes	Chicago Fresh Eggs
February	44.25	34.65		37.40
March			6.00	41.60
April	43.45	30.65	6.42	45.14
May			7.22	41.50
June	43.55	31.60		42.00
July		31.70		
August	42.80	29 50		
September				48 00
October	42 35	27 00		
November			3 36	
December	42 05	27 15		
February '74	41 90			

Trend - Cattle are stronger, Hogs are stronger, Potatoes are stronger, and Eggs are stronger

a-asked b-bid n-normal

Markets provided by Commodity Dept., Reynolds Securities, Inc.

New York Dressed Meats

Thursday, February 8

Compared with Wednesday, prices steady for all fresh meat classes with bulk sales in high side of quotation range while beef hindquarters and full plates advanced 50c.

Supplies moderate in all divisions but generally ample as outlet relatively narrow for fresh meats.

Steer Beef

Prime 600-900 pounds 68.00-69.50; Choice 600-700 68.50-69.50; 700-800 68.00-69.00; 900 67.00-68.50; Good 500-800 66.00-68.00.

Heifer Beef

Choice 500-700 67.50-69.50.

Calf (Skin Off)

150-350 Pounds

Choice 79.00-87.00; Good 77 00-84 00; Standard 72.00-76.00.

Veal (Skin Off)

Choice 90-150 pounds 100 00-109 00; Good 60-90 97.00-104.00; Standard 60-120 81.00-85.00.

Lamb

Choice 30-55 pounds 71.50-73.50, 55-65 68.50-71.50.

Choice Beef Cuts

Hinds (Steer) 145-190 pounds 76.50-79.00; Arm Chucks 90-105 66.00-69.00; Ribs (7 rib) 34-40 79.00-82 00; Loins (Trmd) 50-70 94 00-96.00, Rounds (Steer) 70-95 78 00-80 00, Full Plates 43 00-43 50; Hinds 74.00-76.00.

Fresh Pork Cuts

Loins (Regular) 8-14 pounds 75.00-78.00; 14-17 74.00-76.00; Picnics (Regular) 4-8 45.50-47 50;

Good 33 50-36 00, Commercial 1-2 36 50-38 00 Cutter and low-Utility 29 00-33 50

Feeders Prices 50-1 00 higher, supply mainly fleshy 900-1100 pound steers Outshipments near 1000 head as compared 1500 previous week

Steers: Load choice 616 pounds 51 00 High-Good and Choice 929-1097 41 00-42 00, few loads and lots Choice 843-949 pounds 42.25-43 00 Mostly low-Good 1023-1097 Holsteins 36 75-37 50

Heifers Load Choice 755 pounds 42 00, part load Good and Choice 920 pounds 39 00 Load Good and Choice 471 45 85

Stock Cows Good and Choice 29 00-32 00

Boston Butts 4-8 67.50-69.50; Spareribs 3 pounds down 79.00-82 00, Hams (Skinned) 56.50-58.50; 17-20 56 00-58 00.

New Holland Horse Auction

Monday, February 5

Reported receipts of 400 head of horses; horse market steady with last weeks market; Killer market a cent per pound more.

Load Kentucky and Tennessee mules; pairs 840-1050.

Load North Carolina work horses; singles 180-320, pairs 550-810.

Load Kansas riding horses; 145-230.

Load Illinois driving and riding; driving 195-440, riding 150-300.

Load New York work horses 275-355

Load Ohio work horses, singles 300-480, pairs 655-740

Load Ohio mules, singles 240-340.

Load New York work horses, 255-310.

Local work horses; singles 250-440, pairs 600-870; mules 165-220; driving horses 130-645; riding horses 120-190; better horses 215-460, killers, light weight 8-11, heavy weight 12-15.

Mare ponies 10-30; colts 5-8; geldings 10-20; larger ponies 40-55.

Local Grain

Thursday, February 8

These prices are made up of the average prices quoted by five participating local feed and grain concerns It should be noted, however, that not every dealer handles each commodity All prices are per bushel, except for ear corn which is per ton

The average local grain prices quoted Thursday, February 8, 1973 are as follows

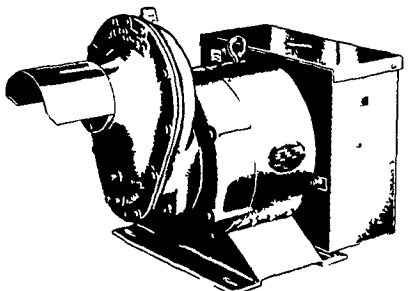
	Bid+	Offered+
Ear Corn	44	50
Shelled Corn	1 77	1 95
Oats, Local	89	1 09
Oats, Western	1 26	1 36
Barley	1 40	1 57
Wheat	1 99	2 31

+Bid is the price the dealer will buy from the farmer delivered to the mill Offered is the price the dealer will sell for at his mill.

WINPOWER



TRACTOR DRIVEN ALTERNATORS



INSURE YOUR FARM OPERATIONS AGAINST POWER OUTAGES. HAVE EXPERIENCED PEOPLE INSTALL & SERVICE.

CALL NOW

WORLDS LARGEST MFG. OF TRACTOR-DRIVEN ALTERNATORS

PTO Units Available From 7 KW to 60 KW 20 Year Warranty

POWER WHEN YOU NEED IT MOST

1800 RPM

INSIST on a FREE WINPOWER DEMONSTRATION

at YOUR Farm Before You Buy ANY Tractor Driven Alternator

L. J. EDWARDS

FARM SALES, Manager



ELECTROMECHANICAL SERVICE

ROUTE 222, EPHRATA, PA. 17522

PHONE (717) 733-7911

LP-NATURAL GAS GASOLINE DIESEL ENGINE GEN. SETS TO 200,000 WATTS

ELECTRIC MOTOR • GENERATOR • POWER TOOL SPECIALISTS