

Hog Prices

Lancaster Market

Monday, January 22
Barrows and Gilts 1.00-1.25 higher; Sows scarce.
BARROWS AND GILTS: US 1 200-240 lbs. 35.50-35.75; US 1-2 200-240 lbs. 35.00-35.25; US 2-3 195-260 lbs. 34.50-34.75.

New Holland Auction

Monday, January 22
HOGS 787: Barrows & Gilts: Strong to 75c higher. US No. 1-2 200-240 lbs. 35.25-36.50; US No. 1-3 200-250 lbs. 34.75-35.25; US No. 2-4 240-280 lbs. 33.75-34.75; US No. 2-4 160-195 lbs. 32.75-34.75.
Sows: US No. 1-3 300-580 lbs. 25.00-28.00
Boars: 23.00-26.00

Lancaster Auction

Wednesday, January 24
Barrows and Gilts weak to 25 lower.
BARROWS AND GILTS: US 1 215-225 lbs. 35.00-35.50
US 1-2 200-240 lbs. 34.60-34.50-
US 2-3 195-240 lbs. 34.10-34.60; few 240-250 lbs. 34.10-34.50.

Lebanon Valley Auction

Tuesday, January 23
197 Head of Hogs
Barrows & Gilts \$1 to \$1.25 higher. US 1-2 230 pounds Barrows & Gilts 35.85, 2-3 200-235 34.85-35.25, 2-4 240-260 34.50-34.85, one lot 3-4 290 pounds 33.00.
Sows: Few US 1-3 400-500 pounds 27.00-27.25, 2-3 450-700 25.00-27.00.
Boars: (few) 24.25-25.00.
34 Head of Feeder Pigs
Couple lots US 1-3 30-35 pounds, 16.25-16.75 per head.

St. Louis Auction

Hogs - 6000, Fully 25c higher. U.S. No. 1-2 35.25 few; U.S. No. 1-3 34.50-35.00.

Peoria Auction

Hogs - 4000. 50c lower. US No. 1-2 34.25-34.75; US No. 1-3 33.75-34.25.

Indianapolis Auction

Hogs - 2500. 25c to mostly 50c lower. US No. 1-2 34.50-34.75; US No. 1-3 34.00-34.50.

Vintage Auction

Saturday, January 20
HOGS 884: Barrows & Gilts: Mostly strong to 25c higher. US No 1-2 200-245 lbs. 34.50-35.10; US No 1-3 200-245 lbs 34.00-34.50; US No. 2-4 190-220 lbs. 33 35-33.75; Few US No. 2-4 250-290 lbs. 30.00-32 50; Few US No 2-4 165-180 lbs 29 85-33.75.

Sows: US No. 1-3 340-560 lbs. 25 75-28.00; Few US No. 2-3 300-470 lbs. 22.00-24.50.

Tuesday, January 23

Barrows and Gilts 50-75 higher. BARROWS AND GILTS: US 1 200-240 lbs. 35.35-35.60; US 1-2 195-240 lbs. 35.10-35.35; US 2-3 195-260 lbs. 34.50-35.10.

New Holland Dairy Cattle

Wednesday, January 24
Reported receipts of 95 cows, and 16 heifers, market lower than last weeks market
Load New York State cows, springers 540-550.

Load Wisconsin cows, fresh, 645-700.

Load Wisconsin cows, fresh, 635-660.

Load Pennsylvania cows, springers, 675-925

Load Canadian cows, fresh, 690-820, springers, 585-720.

Load Franklin County cows, fresh, 515-625, springers, 465-650

Load New York State cows, fresh, 410-690; springers, 450-565

Herd dispersal, Delaware cows, 25 head, all stages of production, 295-530.

Locally consigned cows 285-600

Springing heifers 490-560.

Open heifers 265-340.

Omaha Cattle

Wednesday, January 24
Compared with last week's close, closing prices slaughter steers 50-75 higher. Heifers 50-1.00 higher. Cows 1.00-1.50 higher Bulls fully steady. Small supply feeders strong to 50 higher.

Slaughter steers approximately 48 percent of three day supply heifers 37 percent, cows 8 percent, feeders 5 percent Marketing pattern disrupted by heavy wet snow over area which sharply curtailed marketings the forepart week However, a liberal mid-week supply of 7500 head met with generally good demand and early price gains retained. Mud a major price determining factor with most buyers seeking Choice and Prime steers and heifers which were

Futures Trading

(Closing bids as of Thursday, January 25)

	Chicago Cattle	Chicago Hogs	New York Maine Potatoes	Chicago Fresh Eggs
February	43.35	34.30		42 10
March			5 32	43.25
April	43.15	30.95	5 54	44 50
May			6.32	39 80
June	43 00	31.50		
July		32 05		
August	42 90	29 75		
September				45.80
October	42 95	27 20		
November			3 25	
December	42 80	27 45		
February '74	43 00			

Trend — Cattle are lower, Hogs are lower, Potatoes are steady and Eggs are lower

New York Dressed Meats

Thursday, January 25

Compared with Tuesday, Steer and heifer beef fully steady Veal, calf and lamb steady Pork loins strong, Picnics 50c lower, Butts \$3 00 higher, Spareribs \$1 00 higher, Hams steady

Moderate supplies of fresh meats meeting comparable outlet as purchasing power running light in all distributive channels Beef rough cuts clearing readily along with pork butts and spareribs Otherwise movement slow with urgency eased on beef rounds and arm chucks

Steer Beef

Prime, 600-900 pounds, 67.50-69 00; Choice 600-700 68.00-69 00, 700-800 67 50-68 50, 900 67.00-68 00, Good 500-800 65.00-67 00.

relatively clean Weight usually not a major factor. Cattle carrying moderate to heavy coating of mud sold unevenly 25 to as much as 1.00 below same grade clean animals Considerable pressure to move cattle out of badly deteriorated

(Continued on Page 7)

Heifer Beef

Choice 500-700 66 50-68 50
Calf (Skin Off)
150-350 Pounds

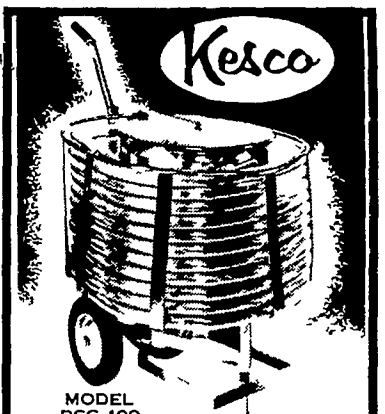
Choice 78 00-86 00, Good 75 00-82 00, Standard 70 00-74 00

Veal (Skin Off)
Choice 90-150 pounds 97 00-107 00, Good 60-90 91 00-97 00, Standard 60-120 76 00-81 00

Lamb
Choice 30-55 pounds 72 00-74 00, 55-65 70 00-73 00

Choice Beef Cuts
Hinds (Steer) 145-190 pounds 75 00-78 00, Arm Chucks 90-105 67 00-69 00, Ribs (7-rib) 34-40 76 00-79 00, Loins (Trmd) 50-70 91 00-93 00, Rounds (Steer) 70-95 78 00-80 00, Full Plates 39 50-40 00, Hinds (Heifer 120-170 73 00-76 00

Fresh Pork Cuts
Loins (Regular) 8-14 pounds 78 00-81 00, 14-17 77.00-80 00, Picnics (Regular) 4-8 46 00-48 00, Boston Butts 4-8 61.50-63 50 Spareribs 3 pounds Down 76 00-78 00, Hams (Skinned) 58 50-60 50, 17-20 57 50-59 00



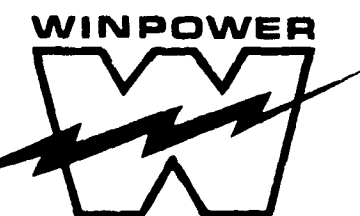
A MILKMOVER SYSTEM

gets you out of the barn sooner—with more money in your pocket! It saves your lugging heavy pails of milk from barn to cooler.

- HAS MORE MILK CAPACITY
- PERMITS FASTER MILKING
- ELIMINATES EXTRA HELP
- PROTECTS MILK QUALITY
- IS 100% SELF-CLEANING
- HAS ELECTRIC CONTROLS
- FITS INTO ALL BARN
- EASILY INSTALLED

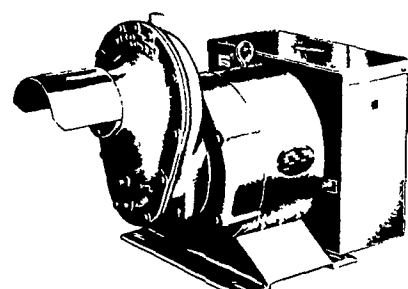
Available thru your local dairy equipment dealer or call the factory collect to arrange for a free demonstration on your farm

Manufactured by
DOUG JOHNSON
INDUSTRIES, INC
P O BOX 283 ELKTON, MD 21921
Phone 301-398-3451



WORLD'S LARGEST MFG. OF TRACTOR-DRIVEN ALTERNATORS

TRACTOR DRIVEN ALTERNATORS



PTO Units Available From 7 KW to 60 KW 20 Year Warranty

POWER WHEN YOU NEED IT MOST 1800 RPM

INSIST on a FREE WINPOWER DEMONSTRATION at YOUR Farm Before You Buy ANY Tractor Driven Alternator

L. J. EDWARDS
FARM SALES, Manager



ELECTROMECH
ELECTROMECHANICAL SERVICE
ROUTE 222, EPHRATA, PA. 17522
PHONE (717) 733-7911

LP-NATURAL GAS GASOLINE DIESEL ENGINE GEN. SETS TO 200,000 WATTS

ELECTRIC MOTOR ● GENERATOR ● POWER TOOL SPECIALISTS

U. S. Inspected Livestock Slaughter

Estimated Daily Livestock Under Federal Inspection
CATTLE HOGS SHEEP
No market report due to day declared as National Day of Mourning

WITH BUX ONLY THE ROOTWORMS HAVE TO WORRY.



BUX Corn Rootworm Insecticide controls both resistant and non-resistant rootworms. But it also has a relatively low mammalian toxicity, and it doesn't smell bad. Let us give you the full story.

P. L. ROHRER & BRO., INC.

Smoketown, Pa. 397-3539

TM'S ORTHO CHEVRON AND DESIGN BUX—REG U.S. PAT OFF AVOID ACCIDENTS READ THE LABEL AND USE ONLY AS DIRECTED