

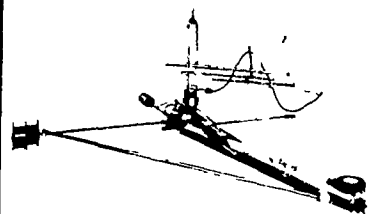
READ LANCASTER FARMING
FOR FULL MARKET REPORTS

**BEFORE YOU BUY
ANY SILO OR SILO
EQUIPMENT....**

CHECK WITH YOUR
LOCAL REPRESENTATIVE

- C. B. HOOPER
- JOHN KREIDER
- J. SAMUEL SHERER
- EUGENE HELLER

We Sell the Best
For Less



STARLINE UNLOADER

CHECK OUR FALL AND EARLY
ORDER DISCOUNTS

SPECIAL DEAL ON

STARLINE UNLOADERS

WHILE THEY LAST

AUTOMATIC BELT FEEDERS

LANCASTER SILO CO., INC.

2436 Creek Hill Road or
2008 Horseshoe Road, Lancaster, Pa.

Automating a Small Fluid Milk Plant

To automate or not to automate: this question may be answered for small fluid milk processing plant owners and managers in a new report of the U.S. Department of Agriculture (USDA)

If small dairy plant owners and managers are to continue operating, they must compete with larger automated plants. In

automating their fluid milk plants they must reduce the labor requirements for performing the processing operations without sacrificing either the safety of the quality of the finished product. However, operating costs must be reduced enough to pay for the automated equipment installed. Engineers of USDA's Agricultural Research Service,

in cooperation with food scientists of the Missouri Agricultural Experiment Station, Columbia, designed and installed in the fluid milk processing line at the University of Missouri plant an automated system that produces a 77 percent annual net savings

This system has safety features that equal or exceed those recommended by U.S. Public Health Service, and required by state and local regulations. Additions to the conventional processing line consist of

Air-actuated valves and cleaned-in-place fixtures

A two-speed sanitary centrifugal pump

A liquid level controller and a spray tube for the vacuum chamber

A control system which permits the homogenizer to be cleaned-in-place with the processing line

Reduced labor costs account for all resulting savings. Equipment costs are higher for the automated system. Approximately 65 percent of the savings involve homogenized milk

Copies of the publication, ARS-NC-2, "An Economic Analysis of Automating a Small Fluid Milk Plant," are available free from Dr. Maynard E. Anderson, Agricultural Engineering Department, Building T-12, University of Missouri, Columbia, Mo 65201. Please use zipcodes

**ORDER YOUR SPRING
FARM SEEDS NOW**

MANY FARM SEED ITEMS ARE IN SHORT SUPPLY

- Cert. Iroquois Alfalfa
- Cert. Saranac Alfalfa
- Cert. Cayuga Alfalfa
- Cert. W-L305 Alfalfa
- Cert. Vernal Alfalfa
- Cert. Buffalo Alfalfa

- Cert. Pennscott Red Clover
- Cert. Ladino Clover
- Cert. Garry Oats
- Cert. Russel Oats
- Cert. Clintland Oats
- Erie Spring Barley

Grasses

- Maine Grown Certified Seed Potatoes
- DeKalb Corn

Sudax

P. L. ROHRER & BRO., INC.

SMOKETOWN

Phone Lanc. 397-3539

**The "new settlers" are coming—
and enjoying what they find here!**

The new settlers, of course, don't come in covered wagons. Now they drive station wagons, filled with kiddies and pets and furnishings and more.

But, if the transportation is different, their reasons for choosing Southern Lancaster County are much the same as the original pioneers'. They value the clean air and water, the friendliness, the room to grow in.

And many have found, to their satisfaction, that our style of banking ("the way you'd do it") fits right in.

Inside our beautiful, new building, we operate on a first-name basis. Red tape is practically non-existent. Our employees are local persons, implementing policies set by local directors for one bank office—not four or ten.

With us, savers receive the *highest* bank interest permitted by law. Mortgages and other loans are tailored to individual needs.

And, when it comes to checking, it's free—free for everybody, with no minimum balance required.

Whether you're brand new to our vicinity, or practically an old-timer, you're welcome here. Because, from our genuine smiles to our accommodating service, we're a little part of what's nice about Southern Lancaster County.

Farmers National Bank of Quarryville

Banking the way you'd do it.

Member, Federal Deposit Insurance Corporation

