

McHale Blasts REAP Cutoff

Pennsylvania Agriculture Secretary Jim McHale has called for support from the State's Congressional delegation and from every one of its farmers in opposing the termination by the Nixon administration of the Rural Environmental Assistance program.

REAP and another conservation program, the \$10 million Water Bank Program (WPB), were declared terminated as of Dec. 22.

McHale said in the past five years 50 percent of the farmers in Pennsylvania benefited from REAP, under which the costs of liming fields, digging drainage ditches, and more recently, building animal waste pollution facilities were shared.

When REAP was launched in 1936, noted McHale, the guiding philosophy was that it was for the public good to invest in land owned by the farmer. For every dollar the public invested, it was felt the farmer would invest more in conservation with his labor.

"Now," said McHale, "USDA in announcing the death of these programs has assumed that cost sharing benefits are not an investment for the public but mere supplementary income for farmers. This is wrong."

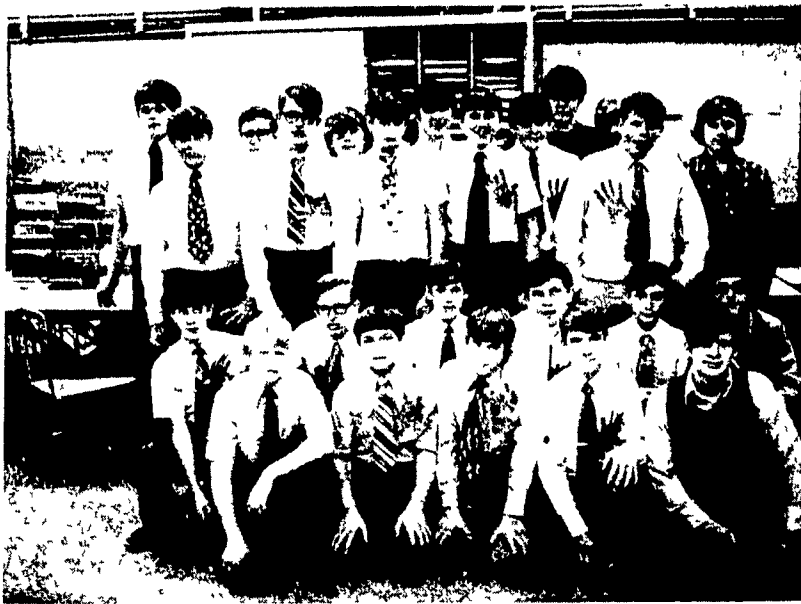
McHale said he had contacted every Pennsylvania Congressional delegate by telegram urging support for continuance of REAP and WPB. He urged every Pennsylvania farmer and farm organization to join in the effort to save the conservation programs.

In a letter of explanation to USDA employees (Dec. 27), Butz indicated that REAP and WPB had been ended as part of the administration's fight against inflation and that record income would allow the nation's farmers to protect soil and water without government help. REAP offers landowners annual payments for part of the cost of conservation and pollution control; WPB provides contracts for protection of wetlands for migratory fowl.

Termination of the programs said McHale was an insult to the Congress, a contemptuous slap at farmers who supported Butz and Nixon and a stab in the back of the conservation effort.

"Butz's picture of an \$18 billion total farm income has been challenged by his own economist - Donald Paarlberg, USDA's director of agricultural economics who now says farm income has been overestimated by \$1 billion," McHale recounted.

Manor Chapter Initiates Greenhands



Twenty-five ninth grade boys were recently initiated as Greenhands in the Manor FFA Chapter.

The Greenhands had to wear a green hand during the school day, had to have all the signatures of the FFA officers on their hand, had to wear their shirts backwards until noon, then had to roll their pants legs between the ankles and knees for the rest of the day.

Greg Landis, Chapter president, called the evening meeting to order. Each Greenhand was brought to president Landis, who asked each Greenhand some questions on the material that the Greenhands were required to know, including the colors of the FFA, the FFA motto, the five symbols on the FFA emblem, and the FFA creed.

Clair Hostetter
Chapter Reporter

Recently accepted in the Manor FFA Chapter as Greenhands were: Kneeling, left to right, Tim Miller, Bob Burkholder, Bill Walton, Bob Rohrer, Dave Harnish, Ron Hunt, Greg Delp, Joe Metzler, Steven Funk, Ralph Huber, Scott Reed; standing, Bill Hess, Jeff Funk, Chris McCarty, Jeff McMullen, Frank Nadu, Doug Reixinger, Jerre Phillips, Carroll Herr, John Sabatine, Harold Nace, Larry Lawrence, Bob Frey, and Carl Thomas. Absent is Lewis Gonzalas.

Silver Spurs Meet

The Silver Spurs 4-H Horse and Pony Club held its January meeting at the home of Randy and Jim Glick. The meeting was called to order by the president, Randy Glick.

Dues and roll were taken by the junior treasurer, Jim Glick. Secretary Richard Rehm read the minutes. They were approved as read. Fifteen members, 13 visitors and seven leaders and adults were present.

Discusses under new business was a sledding and ice skating party to be held at Circle T Ranch. It was decided to go to a roller skating party at Overlook Skating Rink on January 25,

"Further, parity percentage - the ratio of what a farmer pays to what he receives - stands in the low 70's, a level unmatched since the depression," McHale concluded.

sponsored by the 4-H County Council. A film was shown.

The next meeting will be held at Beth Robbins' at 7:30 p.m. February 2.

Cherri Gochnauer,
Patti Nauman,
Club Reporters

4-H Honey Winners

Four 4-H members shared first places in honey judging competition at the 57th Farm Show.

Rankin Montgomery, Franklin, RD2, Venango County, was winner in the white extracted class. Donna Hefferman, Franklin, RD3, won first place with her exhibit of extra light extracted honey.

Mark Bucks, Robesonia, Lebanon County, showed the top exhibit of light amber extracted honey, and Matthew L. Miller, Dover, RD3, York County, was winner in the extracted class.

DAIRYMEN'S SPECIAL

Butter **\$1.00**
Teat Dip each

- Reddy Heaters
- High Pressure Cleaners Portable 700 lb. pressure
- Cattle Tags and Chains
- Handy Hoof Trimmers
- Dairy Vac
- Maes Inflatons
- Mineral Feeders
- Cow Trainers
- Cattle Dust Bags

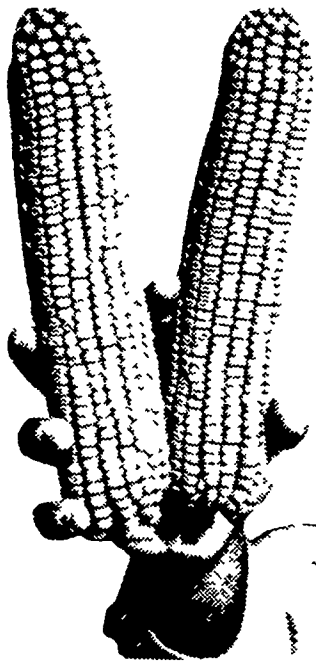
Sunbeam Clippers

THIBENZOLE + TRAMISOL
Cattle & Sheep Wormer.
TYLAN-10, SP-250, TM-50
Livestock Conditioners.

Find the Key to your
Animal Health Problems at
ZIMMERMAN'S ANIMAL
HEALTH SUPPLY

Woodcorner Rd.
Lititz RD4, Pa.
Phone 733-4466 or 656-9818

Plant Pioneer "Leader" hybrids



EARLY MATURITY:

3773 - Most popular hybrid in it's maturity in Pennsylvania.

MEDIUM MATURITY:

3571 - Top yielder of quality corn. Keeps standing till harvest.

FULL MATURITY

3368 - Excellent companion to 3369A - has many of the same characteristics plus better standability.

3369A - Frequently 10 to 20 bushels per acre better than other corns.

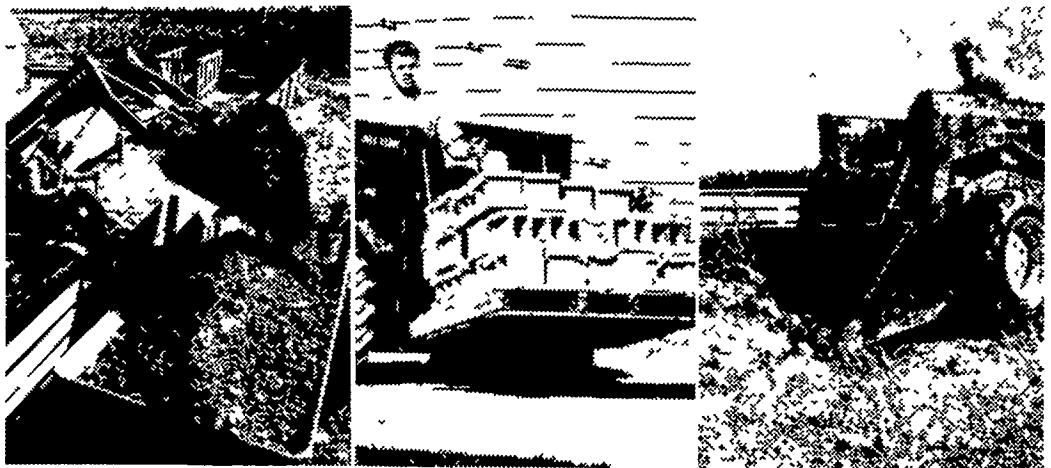
Sold by your Pioneer man



PIONEER.

CORN, SORGHUM, ALFALFA

Pioneer is a brand name, numbers identify varieties
*Reg. trademark of Pioneer Hi-Bred International, Inc.,
Des Moines, Iowa, U.S.A.



New Skid-Steer-Loaders... Jack-of-all-trades from John Deere

Buy a new John Deere Skid-Steer Loader for your manure-handling chores and you'll soon be using it for a variety of other jobs—filling feed bunks, cleaning out loafing sheds, hauling light machinery, building or grading roads. A selection of buckets and attachments—such as a pallet fork—lets you stretch uses in keeping with your needs and desires. Choose your loader from two sizes, the 25-h.p. 70 or 37-h.p. 170; both are of compact design to work easily in tight quarters. See us for more details.



LANDIS BROS. INC.
Lancaster 393-3906

A. B. C. GROFF, INC.
New Holland 354-4191

EDWIN HURST INC.
Adamstown, Pa. 215-484-4391

SHOTZBERGER'S
Elm 665-2141

WENGER IMPLEMENT, INC.
The Buck 284-4141

M. S. YEARSLEY & SONS
West Chester 696-2990