

# Hog Prices

## Vintage Auction

**Saturday, December 30**  
**HOGS 755:**  
 Barrows & Gilts: Mostly \$1 to \$2 lower. US No. 1-2 195-230 lbs. 31.60-32.00; US No. 1-3 200-250 lbs. 30.85-31.50; US No. 2-4 250-270 lbs. 29.50-30.60; US No. 2-4 185-190 lbs. 30.00-31.35  
**Sows:**  
 US No. 1-3 305-530 lbs. 22.00-23.75  
**Boars: 21.00-23.75**  
**Tuesday, January 2**  
 Barrows and Gilts 2.00-2.25 lower.  
**BARROWS AND GILTS:** US 1 200-240 lbs. 31.75-32.10; US 1-2 200-250 lbs. 31.25-31.75; US 2-3 195-255 lbs. 30.60-31.25; US 3-4 250-270 lbs. 29.35-29.85.

## New Holland Auction

**Monday, January 1**  
**HOGS 1169:**  
 US No. 1-2 200-240 lbs. 31.50-32.00; US No. 1-3 200-250 lbs. 31.00-31.50; US No. 2-4 240-270 lbs. 29.50-31.00; US No. 2-4 160-190 lbs. 28.00-31.00.  
**Sows:**  
 US No. 1-3 300-570 lbs. 23.00-26.00  
**Boars: 22.50-24.00**

## Lancaster Auction

**Wednesday, January 3**  
 Barrows and Gilts 25 higher.  
**BARROWS AND GILTS:** US 1 210-230 lbs. 32.50-32.75; US 1-3 190-255 lbs. 31.25-31.75; mainly 31.50-31.60; US 3-4 260-270 lbs. 30.75-31.00

## Lancaster Market

**Tuesday, January 2**  
 Barrows and Gilts 1.50 lower.  
**BARROWS AND GILTS:** US 1 200-230 lbs. 32.00-32.50; US 1-2 200-240 lbs. 31.50-31.75; US 2-3 195-255 lbs. 31.00-31.50.

## St. Louis Auction

**HOGS:** 3500, 2.00-2.50 higher US 1-2 195-230 lbs. 33.50-34.00; 125 head 217 lbs. 34.50; 1-3 200-240 lbs. 33.00-33.50.

## Indianapolis Auction

**HOGS:** 1000, 2.00-2.50 higher, active US 1-2 200-235 lbs. 33.75-34.00; 1-3 200-250 lbs. 33.00-33.75

## Peoria Auction

**HOGS:** 3000, active, unevenly 2.00-3.00 higher  
 US 1-2 200-240 lbs., including some up to 245 lbs. 34.50-35.00; 1-3 200-250 lbs. 34.00-34.50; 2-3 240-270 lbs. 33.00-34.00.

## Lebanon Valley Auction

**Tuesday, January 2**  
 295 Head of Hogs  
 Barrows and Gilts \$3 lower.  
**BARROWS AND GILTS:** U.S. 2-3 195 - 240 pounds 30.60 - 31.00; 2-4 230 - 260 30.00 - 30.25; one lot 3-4 360 pounds 24.00.  
**SOWS:** U.S. 1-3 300 - 500 pounds 23.25 - 24.85.  
**BOARS:** (Few) 20.00 - 21.00.

# Omaha Cattle

**Thursday, January 4**  
 Compared with last week's close closing prices slaughter steers 1.25-1.75 higher than previous midweek, instances 2.00 higher on 75-1.00 higher than late trading on limited volume. Heifers 1.25-1.75 higher than previous midweek. Cows strong to 50 higher, bulls fully steady. Modest feeder supply fully 1.00 higher.

Three day receipts 12,900 as compared 20,900 previous Holiday period and 16,400 a year ago. Slaughter steers approximately 44 percent, heifers 36 percent, cows 9 percent and feeders 11 percent. Fed cattle prices continued upward spiral which began late previous week and closing quotations at highest level since July 1972 peak. Marketings substantially reduced from previous week and a mini-blizzard at midweek encouraged buyers to acquire cattle while available. However, in recognition of poor ratio between live costs and carcass realizations, some packers chose to reduce slaughter quotas to minimum level. Mud, a continuing problem, and situation further aggravated by heavy wet midweek snow.

**STEERS:** Seven loads High-Choice and Prime 1051-1221 pounds 3-4 40.25, twenty-five loads same grade 1000-1260 2-4 39.60-40.00. Choice 975-1300 2-4 closed 38.50-39.50. Mixed Good and Choice 950-1250 37.50-38.50. Good 34.50-37.50, Grade 2-3 Holsteins 34.50-35.00. Standard and low-Good 33.00-34.50.

Average cost slaughter steers for two days 38.90 average weight 1139 pounds as compared 37.61 and 1152 pounds previous week and 34.21 and 1132 pounds a year ago.

**HEIFERS:** Two loads high-Choice and Prime 976 pounds clean predominantly grade 3 39.50 highest of record locally. Moderate volume same grade

# Futures Trading

(Closing bids as of Thursday, January 4)

|             | Chicago Cattle | Chicago Hogs | New York Maine Potatoes | Chicago Fresh Eggs |
|-------------|----------------|--------------|-------------------------|--------------------|
| January '73 |                |              |                         | 49.80              |
| February    | 41.80          | 33.25        |                         | 46.55              |
| March       |                |              | 5.81                    | 45.10              |
| April       | 41.50          | 29.30        | 5.98                    | 44.35              |
| May         |                |              | 6.67                    | 39.60              |
| June        | 41.45          | 29.75        |                         | 39.50              |
| July        |                | 29.70        |                         |                    |
| August      | 40.25          | 28.00        |                         |                    |
| September   |                |              |                         | 45.00              |
| October     | 39.35          | 26.32        |                         |                    |
| November    |                |              | 3.45                    |                    |
| December    | 39.22          | 26.37        |                         |                    |

Trend — Cattle are higher, Hogs are lower, Potatoes are lower and Eggs are lower.

a-asked b-bid n-normal

Markets provided by Commodity Dept., Reynolds Securities, Inc.

932-1236 3-4 38.40-38.75. Choice 825-1100 2-4 37.25-38.50.

**COWS:** Utility and Commercial 25.00-27.25, a few Utility 27.50-28.00. Canner and Cutter 22.00-25.00, mixed Cutter and Utility 25.25-26.00. Shelly Canner 21.00-22.50.

**BULLS:** Utility, Commercial and Good 30.00-33.00. Commercial 1-2 33.50-34.00. Cutter and low-utility 27.00-30.00.

**FEEDERS:** Prices fully 1.00 higher in reflection of upsurge in slaughter prices. Outshipments of 1200 same as previous week, supply mainly fleshy two-way steers with moderate volume heifers.

**STEERS:** Load choice 818 pounds 40.50, Choice 1014-1125 pounds fleshy 38.00-38.50, two consignments 980-998 39.00-39.25. High-Good and Choice these weights 37.50-38.50.

**HEIFERS:** Load Choice 418 pounds 44.00, two loads Choice 503-589 42.00-43.00. High-Good and Choice 760-893 36.00-37.00.

# New York Dressed Meats

**Thursday, January 4**  
 Compared with Wednesday, steer and heifer beef continues weak, veal and calf steady, lamb fully \$2 higher, pork loins, butts and spareribs steady, picnics \$1 higher, and hams steady to \$1 higher.

General outlet for fresh meats only fair at best aside from lamb which is widely featured at retail for current week. Beef chucks disappointingly slow while demand less urgent for beef rounds and ribs. Carried over beef plaguing wholesalers and undoubtedly having price impact.

**Steer Beef**  
 Prime 600 - 900 pounds 63.00 - 64.50; Choice 600 - 700 62.50 - 63.50; 700 - 800 60.50 - 61.50; 800 - 900 59.50 - 60.50; Good 500 - 800 58.50 - 60.00.

**Heifer Beef**  
 Choice 500 - 700 pounds 60.50 - 62.50.

**Calf (Skin Off)**  
 150 - 350 Pounds  
 Choice 78.00 - 86.00, good 75.00 - 82.00; Standard 70.00 - 74.00.

**Veal (Skin Off)**  
 Choice 90 - 150 pounds 96.00 - 106.00; Good 60 - 90 90.00 - 96.00; Standard 60 - 120 74.00 - 79.00.

**Lamb**  
 Choice 30 - 55 pounds 68.00 - 70.00; 55 - 65 pounds 66.00 - 69.00.

**Choice Beef Cuts**  
 Hinds (Steer) 145 - 190 pounds 73.00 - 76.00; Arm Chucks 90 - 105 48.00 - 50.00; Ribs (7-ribs) 34 - 40 78.00 - 81.00; Loins (Trmd) 50 - 70 93.00 - 95.00; Rounds (Steer) 70 - 95 78.00 - 79.00; Full Plates 33.00 - 34.00; Hinds (Heifer) 120 - 170 73.00 - 75.00.

**Fresh Pork Cuts**  
 Loins (Regular) 8 - 14 pounds 71.00 - 74.00; 14 - 17 69.00 - 71.00; Picnics (Regular) 4 - 8 42.00 - 44.00; Boston Butts 4 - 8 61.00 - 63.00; Spareribs 3 pounds down 64.50 - 66.50; Hams (Skinned) 14 - 17 58.00 - 60.00; 17 - 20 55.00 - 56.50.

**Kosher Market**  
 Kosher Steer Beef: Prices weak on mid session with lamb foresaddles strong.

## U. S. Inspected Livestock Slaughter

Estimated Daily Livestock Slaughter Under Federal Inspection

|                       | CATTLE  | HOGS      | SHEEP   |
|-----------------------|---------|-----------|---------|
| Week to date          | 352,000 | 768,000   | 106,000 |
| Same period last week | 368,000 | 894,000   | 106,000 |
| Same period last year | 431,000 | 1,143,000 | 158,000 |



## Coming... Another Fly-In



THOUSANDS AND THOUSAND OF FARMERS AND OTHER INTERESTED PARTIES HAVE VISITED THE JOHN DEERE FACTORIES KNOWING THE INSIDE STORY OF HOW JOHN DEERE CONTINUES TO MAINTAIN ITS REPUTATION FOR QUALITY.

NOW, YOU TOO HAVE THE OPPORTUNITY TO VISIT THE JOHN DEERE FACILITIES IN THE MID-WEST AND THIS TIME ITS:

### GENERATION II - FLY-IN '73

HERE YOU WILL SEE WHAT GOES INTO A JOHN DEERE GENERATION II TRACTOR ... FROM RAW MATERIAL TO FINAL PAINTING AS WELL AS MANY, MANY OTHER AMAZING SIGHTS!!

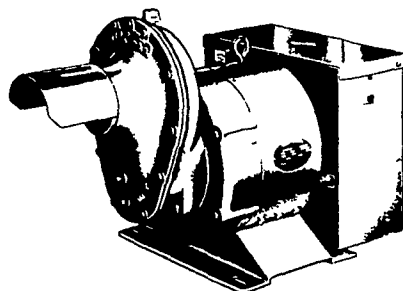
JOIN US -- YOU'LL BE GLAD YOU DID.

FOR FURTHER INFORMATION AND DETAILS SEE:

- |   |   |
|---|---|
| <b>WENGER IMPLEMENT, INC.</b><br>The Buck 284-4141        | <b>SHOTZBERGER'S</b><br>Elm 665-2141                |
| <b>M. S. YEARSLEY &amp; SONS</b><br>West Chester 696-2990 | <b>A. B. C. GROFF, INC.</b><br>New Holland 354-4191 |
| <b>EDWIN HURST INC.</b><br>Adamstown, Pa. 215-484-4391    | <b>LANDIS BROS. INC.</b><br>Lancaster 393-3906      |

## WINPOWER TRACTOR DRIVEN ALTERNATORS

TRACTOR DRIVEN ALTERNATORS



WORLD'S LARGEST MFG. OF TRACTOR-DRIVEN ALTERNATORS

PTO Units Available From 7 KW to 60 KW 20 Year Warranty

POWER WHEN YOU NEED IT MOST

1800 RPM

INSURE YOUR FARM OPERATIONS AGAINST POWER OUTAGES. HAVE EXPERIENCED PEOPLE INSTALL & SERVICE.

CALL NOW

INSIST on a FREE WINPOWER DEMONSTRATION at YOUR Farm Before You Buy ANY Tractor Driven Alternator

**L. J. EDWARDS**  
FARM SALES, Manager

Visit us at the Farm Show Booths 517-518



## ELECTROMECH

ELECTROMECHANICAL SERVICE  
 ROUTE 222, EPHRATA, PA. 17522

PHONE (717) 733-7911

LP-NATURAL GAS GASOLINE DIESEL ENGINE GEN. SETS TO 200,000 WATTS

ELECTRIC MOTOR • GENERATOR • POWER TOOL SPECIALISTS