

Hog Prices

Vintage Auction

Tuesday, December 26
Barrows and Gilts 50-75 higher.
BARROWS AND GILTS — US 1
210-235 lbs. 33.85-34.25; US 1-2 200-
245 lbs. 33.60-33.85; US 2-3 195-250
lbs. 33.25-33.60; US 3-4 250-265 lbs.
32.85-33.10.

New Holland Auction

Monday, December 25
No Auction
Christmas Day

Lebanon Valley Auction

Tuesday, December 26
302 Head of Hogs
Barrows and Gilts \$1.50 higher.
BARROWS AND GILTS: U.S.
2-3 200 - 245 pounds 33.60 - 34.25,
one lot 34.60; 2-4 190 - 260 pounds
32.75 - 33.25.
SOWS: U.S. 2-3 400 - 700 pounds
23.50 - 25.00.
BOARS: 20.00 - 23.00.

Indianapolis Auction

Hogs 2000. 2.00 lower than
Wednesday. Steady to slow, 1.00
lower than Thursday. US 1-2 200-
240 lbs. 30.50-31; 1-3 200-240 lbs.
30-30.50; 2-3 240-270 lbs. 29.25-30.

St. Louis Auction

Hogs-4000. 1.50 to 1.75 lower
than Wednesday. Fully 50 lower
than Thursday. US 1-2 200-230 lbs.
31.25; 100 head No. 1 200-210 lbs.
31.50; 1-3 200-230 lbs. 30.50-31.

Peoria Auction

No Market Report due to day
declared as National Day of
Mourning.

Lancaster Auction

Wednesday, December 27
HOGS — Barrows and Gilts 50-
1.00 lower.
BARROWS AND GILTS — US 1
210-225 lbs. 33.50-34.00; US 2-3 195-
250 lbs. 32.50-32.85; US 3-4 260-270
lbs. 31.50-32.10.

Lancaster Market

Tuesday, December 26
Barrows and Gilts 50 higher.
BARROWS AND GILTS—US 1
200-240 lbs. 34.50; US 1-2 200-240
lbs. 33.50-34.00; US 2-3 190-250 lbs.
33.00-33.50.

Show Honors

(Continued From Page 1)

Nissley, and third in fillers to Jay
Bleacher.

This was the fourth year in a
row that the Reist twins won
tobacco show honors.

Fourteen-year-old Kerry Boyd
retained his title of County 4-H
Corn King Thursday in com-
petition held in conjunction with
the tobacco contest.

The son of Mr. and Mrs. Elmer
Boyd, Ephrata R1, Kerry had the
champion corn exhibit and the
high record book score in the corn
competition.

This was the third year in a row
he has won the corn title. He also
won a top award in corn judging
at the State Farm Show in
January.

Douglas Rohrer, 1623 Book Rd.,
placed second in corn judging
and also second in record book
score.

John Yokum also judged the
corn contest.

New Cooperators

The Lancaster County Soil and
Water Conservation District
announces the following new
cooperators:

Howard Swan, Rapho Town-
ship, 10 acres; Robert L. Kauff-
man, Drumore Township, 136
acres; George C. Aument, East
Drumore Township, 55 acres; J.
Emmett Murphy, Martic
Township, 5 acres; Robert G.
Brubaker (Martin), Mount Joy
Township, 120 acres; Robert G.
Brubaker (Graham), Mount Joy
Township, 140 acres, and Zim-
merman Bros., West Cocalico
Township, 54 acres.

New Industry Funds Voted for Environment

New funds totaling \$2.65
million have been approved
by the American Petroleum
Institute for the Institute's
1973 research program on im-
provement and protection of
the environment.

These funds, together with
some \$2.25 million previously
appropriated, will bring the
total available for the 1973
research program to \$4.9 mil-
lion.

API President Frank N.
Ikard said most of the money
will be used to sponsor proj-
ects on air pollution problems
and oil spills.

Futures Trading

(Closing bids as of Wednesday, December 27)

	Chicago Cattle	Chicago Hogs	New York Maine Potatoes	Chicago Fresh Eggs
January '73				51.10
February	40.50	32.95		47.65
March			5.86	46.60
April	40.80	29.05	6.07	45.75
May			6.79	39.80
June	40.75	29.30		39.75
July		29.00		
August	39.75	27.55		40.70
September				45.50
October	38.75	25.80		
November			3.33	
December	39.00	25.85		

Trend - Cattle are higher, Hogs are higher, Potatoes are lower and
Eggs are higher.

a-asked b-bid n-normal

Markets provided by Commodity Dept., Reynolds Securities, Inc.

Nov. Egg Output Down 3 pct. in Pa.

Laying flocks in Pennsylvania
produced 321 million eggs during
November, 3 percent less than a
year ago, and 1 percent less than
October, according to a report
this week by the Pennsylvania
Crop Reporting Service.

The number of layers on hand
averaged 16.5 million during
November this year, compared
with 16.2 million a year ago and
16.0 million last month.

The December 1 rate of lay was
64.8 eggs per 100 layers, com-
pared with 63.7 a year ago and
64.6 a month ago.

The Nation's laying flock
produced 5,597 million eggs
during November, 6 percent less
than in November 1971. Layers on
hand during November averaged
306.8 million—6 percent below a
year earlier. The average rate of
lay during the month was up 1
percent from a year earlier and
partially offset the reduction in
layers. Production declines from
a year earlier of more than 5
percent occurred in Indiana,
Wisconsin, Iowa, Missouri, South
Dakota, Nebraska, Virginia,
North Carolina, Louisiana,

Oklahoma, Texas and California
while production increases of
more than 5 percent occurred in
Maine, Massachusetts, Ten-
nessee and Washington. Layers
on farms December 1, 1972 to-
taled 307.2 million, down 7 percent
from the 328.9 million a year
earlier but up slightly from
November 1, 1972. Rate of lay on
December 1 averaged 61.0 eggs
per 100 layers, up from 60.5 a
year earlier and up slightly from
the rate of 60.6 on November 1,
1972.

Hatcheries in Pennsylvania
produced 1.56 million egg-type
chicks in November, a hatch 15
percent smaller than a year ago.
January through November egg-
type hatch totaled 23.1 million
chicks, down 11 percent from the
comparable period last year.

Commercial hatcheries in
Pennsylvania hatched 5.8 million
broiler chicks in November, 16
percent less than last November.
January through November
broiler-chick hatch totaled 71.1
million, down 2 percent from the
comparable period last year.

Broiler-type chicks produced

during November totaled 251.0
million, slightly more than the
250.4 million produced during
November a year ago. The four
leading States, Arkansas, Ala-
bama, Georgia and North
Carolina produced 138.6 million
during November. This was more
than half the total U.S. produc-
tion. The accumulated January
through November hatch of
3,002.5 million compares with
2,901.0 million during the same
period last year. Broiler eggs in
incubators on December 1 totaled
219.3 million, down 1 percent
from a year earlier. Egg-type
chicks hatched during November
totaled 32.2 million—down 2
percent from the 32.9 million
hatched during November 1971.
In the three leading States,
production was down 5 percent in
California, 3 percent in Georgia
and 9 percent in Florida. The
January through November
hatch of 456.2 million was down 8
percent from the corresponding
months of 1971.

Use of man-made fibers will
increase about 9 per cent this
year, surpassing the 4.3 bil-
lion pound consumption of
1971 by 380 million pounds,
according to R. W. Rice,
president Firestone Synthet-
ic Fibers Co.

U. S. Inspected Livestock Slaughter

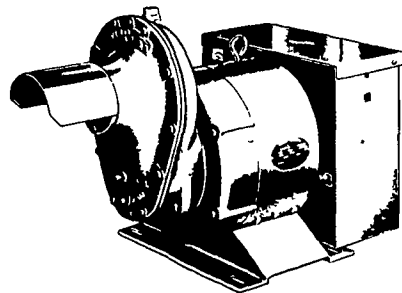
Estimated Daily Livestock Slaughter Under Federal Inspection

	CATTLE	HOGS	SHEEP
Week to date	248,000	582,000	67,000
Same period last week	346,000	888,000	102,000
Same period last year	329,000	875,000	112,000

WINPOWER



TRACTOR DRIVEN
ALTERNATORS



INSURE YOUR
FARM OPERATIONS
AGAINST POWER
OUTAGES. HAVE
EXPERIENCED PEOPLE
INSTALL & SERVICE.

CALL NOW

WORLD'S LARGEST
MFG. OF
TRACTOR-DRIVEN
ALTERNATORS

PTO Units
Available From
7 KW to 60 KW
20 Year
Warranty

POWER
WHEN YOU NEED
IT MOST

1800 RPM

INSIST on a FREE
WINPOWER DEMONSTRATION
at YOUR Farm
Before You Buy ANY Tractor
Driven Alternator

L. J. EDWARDS
FARM SALES, Manager

ELECTROMECH

ELECTROMECHANICAL SERVICE

ROUTE 222, EPHRATA, PA. 17522

PHONE (717) 733-7911

LP-NATURAL GAS
GASOLINE
DIESEL
ENGINE GEN.
SETS TO
200,000 WATTS

ELECTRIC MOTOR • GENERATOR • POWER TOOL SPECIALISTS

NOTICE TO ALL FARMERS! SPECIAL NEWS CONFERENCE

ON THE FEED CRISIS

It's Causes.. It's Future Possible Remedies
SUNDAY DEC. 31 1:00 p.m.

PARTICIPANTS

John J. Hess II - President PennAg Industries Assoc.
Don Park Exec. V.P. PennAg Industries Assoc.
Bob Mueller - Branch Manager, Cargill of Marietta.

1580 ON YOUR DIAL = WHEX RADIO COMPANY

BROUGHT TO YOU BY NEW HOLLAND SUPPLY COMPANY, WHO
ALSO SPONSORED THE HOG CHOLERA NEWS CONFERENCE 2 WEEKS AGO.

THE PENNA. FARMERS STATION

1580 WHEX