

Help Us Serve You

If your organization didn't make our farm calendar this week, it's not because we don't like you or your organization.

We may have missed it in the rush. Or maybe you forgot to tell us.

Either way, we'd like to extend our farm community service to you.

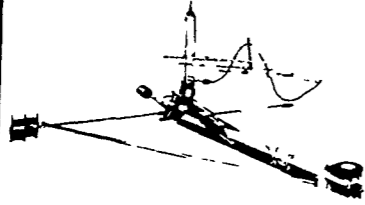
To get on the Farm Calendar, remind us by calling 394-3047 or 626-2191 or by writing to Lancaster Farming, 22 E. Main St., Lititz, Pa. 17543. And help us serve you better.

BEFORE YOU BUY ANY SILO OR SILO EQUIPMENT....

CHECK WITH YOUR LOCAL REPRESENTATIVE

- C. B. HOOBER
- JOHN KREIDER
- J. SAMUEL SHERER
- EUGENE HELLER

We Sell the Best For Less



STARLINE UNLOADER

CHECK OUR FALL AND EARLY ORDER DISCOUNTS SPECIAL DEAL ON STARLINE UNLOADERS WHILE THEY LAST

AUTOMATIC BELT FEEDERS

LANCASTER SILO CO., INC.

2436 Creek Hill Road or 2008 Horseshoe Road, Lancaster, Pa.



Participating in the extended phase of a public affairs educational program being conducted jointly by The Pennsylvania State University Cooperative Extension Service and Department of Agricultural Economics and Rural Sociology are, from left: Charles H. Rohrer, Paradise RD 1; Peter H. Norton, Extension community resource development specialist at Penn State and group coordinator; and Chris M. Lantz, 53 Logging Road, Leola. The group

of 36 people is involved in studies related to factors influencing rural development, environmental quality, the provision to services in smaller municipalities, communications, and government. Those taking part have received W. K. Kellogg Fellowships which defray costs of instruction, study materials, and room and board while at the institutes and on field trips.

Prepare Tobacco Show Entries

The annual Lancaster County Tobacco Show for adults and FFA members will be held Thursday afternoon, January 4, 1973, at the Farm and Home Center, 1383 Arcadia Road, Lancaster.

Adult entries for the show will be accepted from 12 o'clock noon until 1:30 p.m. FFA entries will

be entered from 10 to 11:30 a.m.

Classes for the show will be short and long wrappers, short and long fillers, and short and long binders. Leaf length is based upon 26 inches more or less.

A hand of tobacco shall consist of 15 leaves tied with another tobacco leaf. Only one entry per individual will be permitted in

each class.

Farm Show classes and rules will be followed in this Lancaster show. All exhibits entered will be taken to the State Farm Show the following week.

This show is sponsored by the Lancaster County Tobacco Growers Association, the Lancaster Leaf Tobacco Board of Trade, and the Cooperative Extension Service.

BEAT SPRING!! (BEAT SHORTAGE OF RAW MATERIALS) FOR BEST RESULTS IN 1973 SEASON

USE



PREMIUM FERTILIZER

FALL—WINTER FERTILIZATION SAVES YOU TIME AND MONEY

BEAT THE WET SPRING FIELDS FERTILIZE THIS FALL AND WINTER

OR TAKE ADVANTAGE OF OUR DEC. PRE-PAYMENT DISCOUNT PLAN

HIGHEST DISCOUNT PERIOD ENDS DEC. 15
SECOND PERIOD ENDS DEC. 30

COMPLETE FERTILIZING PROGRAM
COMPLETE PESTICIDE PROGRAM - NITROGEN SOLUTIONS
CUSTOM APPLICATORS

For Further Information Call 717-367-1211

FARMERS' FERTILIZER WORKS INC.



PHONE 717-367-1211 365 W. BAINBRIDGE ST. ELIZABETHTOWN, PA. 17022