

Hog Prices

New Holland Auction

Monday, November 20
HOGS 785: Barrows & Gilts: Mostly 50c higher. US No. 1-2 200-240 lbs. 30.00-31.25; US No. 1-3 200-245 lbs. 29.50-30.00; US No. 2-4 230-270 lbs. 28.50-29.50; US No. 2-4 150-190 lbs. 28.00-29.50.
Sows: US No. 1-3 300-600 lbs. 22.50-25.50.
Boars: 22.50-24.00.

Lebanon Valley Auction

Tuesday, November 21
313 Hogs
Barrows and Gilts steady to 50c lower.
Barrows and Gilts: U.S. 2-3 200-235 pounds 29.00-29.35; 2-4 195-260 28.60-28.85.
Sows: U.S. 1-3 300-400 pounds 24.00-27.75; few 2-3 300-500 23.25-23.75.
Boars: (Few) 20.00-23.00.
28 Feeder Pigs
One lot 1-3 25 pound feeder pigs 15.00 per head; one lot 1-3 60 pounds 21.00 per head.

Lancaster Market

Monday, November 20
Barrows and Gilts strong to 25 higher.
BARROWS AND GILTS: US 1 205-240 lbs. 30.00-30.25; US 1-3 195-250 lbs. 29.25-29.75; US 3-4 265-285 lbs. 28.00-28.75.

St. Louis Auction

HOGS 5000. Barrows and gilts 25 higher. US 1-3 200-220 lb. 29.00-29.25; 220-240 lb. 28.75-29.00; US 2-3 240-260 lb. 27.72-28.75.

U. S. Inspected Livestock Slaughter

Estimated Daily Livestock Slaughter Under Federal Inspection
"FIRST THREE DAYS"

	CATTLE	HOGS	SHEEP
Week to date	363,000	980,000	118,000
Last week	355,000	951,000	102,000
Last year	336,000	912,000	98,000

Vintage Auction

Saturday, November 18
HOGS 1039: Barrows & Gilts: Mostly steady. US No. 1-2 200-235 lbs. 29.60-30.10; US No. 1-3 185-245 lbs. 29.25-29.75; US No. 2-4 230-280 lbs. 28.85-29.35; US No. 2-4 130-155 lbs. 24.50-25.00.
Sows: US No. 1-3 300-600 lbs. 23.25-25.00.
BOARS: 22.85-23.50.

Tuesday, November 21
Barrows and gilts steady, instances 50 lower on US 1; sows scarce.

BARROWS AND GILTS: US 1 210-235 lb. 29.85-30.10; US 1-2 200-240 lb. 29.60-29.75; US 2-3 190-255 lb. 29.00-29.60.

Lancaster Auction

Wednesday, November 22
Barrows and gilts steady.
BARROWS AND GILTS: US 1 215-245 lb. 30.25; US 1-3 200-250 lb. 29.25-29.75.

Indianapolis Auction

HOGS: 1500. Barrows and gilts 50 to 75 higher. US 1-2 200-230 lb. 29.25-29.75; US 1-3 200-250 lb. 28.75-29.25; US 2-3 240-270 lb. 28.25-28.75.

Peoria Auction

HOGS 3000. Trading very active barrows and gilts 50-75 higher. US 1-2 200-230 lb. 29.25-29.50; 110 head 29.75; US 1-3 200-250 lb. 28.75-29.25.

Omaha Cattle

Wednesday, November 22
Compared with last weeks close slaughter steers unevenly 25-75c lower. Least decline on cattle selected for weight and yield grade for shipment to Canada. These mainly Choice 1000-1125 pound steers, yield grade 2-3. Heifers 75c lower and cows 1.50-2.00 lower. Bulls fully steady. Fleshy two-way feeder steers weak to 1.00 lower.

Three day receipts 17,000 as compared 13,600 previous week and 14,500 a year ago. Slaughter steers approximately 36 per cent, heifers 43 per cent, cows 9 per cent, and feeders 8 per cent. Fed cattle prices forced sharply downward on weeks opening session under combined impact of liberal marketings and lower carcass quotations. Supplies poorly distributed over period with more than 11,000 arriving Monday. This ninth successive week of steady to lower prices. There was considerable pressure to market cattle in view of ample available supply and extremely poor feedlot conditions with many cattle carrying a considerable amount of mud. A moderate volume of Choice 1000-1125 pound steer grade 2-3 bought for shipment to Canada.

STEERS: 12 loads High-Choice and Prime 1050-1150 pounds 3-4 relatively clean 33.10-33.50. Other High-Choice and Prime 1100-1236 3-4 32.75-33.00. Choice 975-1225 2-4 closed 32.25-33.00. Those at latter price usually clean 1000-1125, Choice 1250-1325 grade 4 31.50-32.50. Mixed Good and Choice 950-1225 31.75-32.25; Good 30.75-31.75; Holsteins included at 31.50. Standard and low Good 30.00-30.75.

Average cost slaughter steers for two days 32.28 average weights 1125 pounds as compared 33.33 and 1127 pounds previous week and 33.93 and 1117 pounds a year ago.

HEIFERS: Four loads High-Choice and Prime 922-963 pounds 3-4 32.25-32.50, moderate volume same grade 815-1028 pounds 31.75-32.00. Choice 825-1100 2-4 31.00-31.85. Mixed Good and Choice 750-1000 30.25-31.00. Good 29.00-30.25. Standard and Low-Good 28.00-29.00.

COWS: Utility and Commercial 23.00-24.75, Canner and Cutter 20.50-32.50, Mixed Cutter and

Futures Trading

(Closing bids as of Wednesday, November 22)

	Chicago Cattle	Chicago Hogs	New York Maine Potatoes	Chicago Fresh Eggs
December	34.75	29.90		36.50
January '73				37.60
February	37.30	29.25		38.00
March			4.94	
April	37.60	26.40	5.12	
May			5.68	38.30
June	37.65	26.95		
July		26.95		
August	36.75	25.05		
October	35.95	23.50		
April				37.60
May				34.60

Trend - Cattle are steady, Hogs are steady, Potatoes are stronger, Eggs are stronger.

a-asked b-bid n-normal
Markets provided by Commodity Dept., Reynolds Securities, Inc.

Low-Utility 23.75-24.00. Shelly Canner 18.50-20.00.

BULLS: Utility, Commercial and Good 29.00-32.50, Commercial 1-2 33.00-34.00, Cutter and Low-Utility 26.00-29.00.

FEEDERS: Outshipments of approximately 1500 head / as compared less than 500 head previous week. Prices weak to 1.00 lower in sympathy with downward plunge of fed cattle prices, but still fairly good demand for fleshy 950-1025 pound two-way steers which comprised bulk of supply.

STEERS: Load Choice 462 pounds 49.00. Two loads Choice 699-743 38.75-39.00. Few consignments Choice 950-975 moderately fleshed 33.00-33.50. High-Good and Choice 938-1048 32.00-32.75. Standard and Low-Good mostly Holsteins 1000-1100 30.50-31.00.

Regional Hay Prices

Monday, November 20, 1972
(All hay No. 2 and better, prices paid by dealers at the farm price per ton.)

Hay and straw steady.	
Alfalfa	50.00-55.00
	few to 65.00
Mixed hay	35.00-50.00
Timothy hay	30.00-40.00
Straw	25.00-35.00
Mulch	14.00-20.00

Green Dragon

Friday, November 17
36 loads hay, including: One load Alfalfa, 71.00; Timothy, 43.00 - 64.00; Mixed hay, 39.00 - 66.00, few 88.00 - 91.00; Couple loads Orchard grass, 43.00 and 45.00; two loads Clover, 55.00 and 84.00; one load Crown Vetch, 59.00.
17 loads straw, 34.00 - 38.00.
7 loads corn, 39.00 and 43.00, one load at 50.50.

NOW
THAT WE HAD FROST
TOP DRESS ALFALFA

with

ALFALFA PREMIUM 0-12-34

contains Mg., Boron, Sulpher

0-15-30, 0-18-36, 0-26-26 also Available

also

Chloro IPC can be incorporated in any grade for Chickweed Control

ASK ABOUT OUR WINTER DISCOUNT PROGRAM

FALL PLOWING
FOR CORN

Anhydrous Ammonia Can Be Applied

Apply P & K Needs This Fall And Save

CALL US FOR PROMPT SERVICE!



2313 Norman Rd.
Lancaster, Pa.

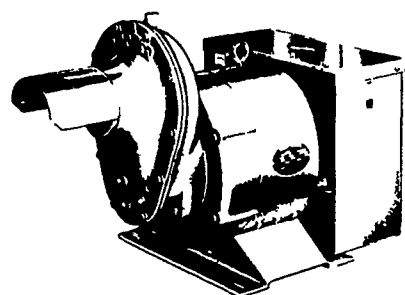
ORGANIC
PLANT
FOOD CO.

Ph: 397-5152

WINPOWER



TRACTOR DRIVEN
ALTERNATORS



INSURE YOUR
FARM OPERATIONS
AGAINST POWER
OUTAGES. HAVE
EXPERIENCED PEOPLE
INSTALL & SERVICE.

CALL NOW



ELECTROMECHANICAL SERVICE

ROUTE 222, EPHRATA, PA. 17522

PHONE (717) 733-7911

ELECTRIC MOTOR • GENERATOR • POWER TOOL SPECIALISTS

WORLD'S LARGEST
MFG. OF
TRACTOR-DRIVEN
ALTERNATORS

PTO Units
Available From
7 KW to 60 KW
20 Year
Warranty

POWER
WHEN YOU NEED
IT MOST

1800 RPM

INSIST on a FREE
WINPOWER DEMONSTRATION
at YOUR Farm
Before You Buy ANY Tractor
Driven Alternator

L. J. EDWARDS

FARM SALES, Manager

LP-NATURAL GAS
GASOLINE
DIESEL
ENGINE GEN.
SETS TO
200,000 WATTS

Dairymen to Vote On Milk Promotion

A statewide referendum on Jan. 12-26, will determine if dairymen are willing to support a milk promotion program at the rate of five cents on every one hundred pounds of milk sold.

Ballots will be mailed to all 21,500 milk producers in the state. Cooperatives will be eligible to use bloc votes for Pennsylvania members, however, individual members may choose to vote alone, in which case their vote will be deducted from the cooperative's bloc vote.

If the promotion program is approved, dairymen will be assessed at a rate of five cents per hundredweight of milk sold. Based on 1971 production figures, this would mean eligible dairymen in the state could support a \$2.5 million program, annually.

Producers paying into a federal milk marketing order promotion program would be exempt from the state program. Dairymen in the southeastern part of the state currently pay into a federal promotion program.