

# Poultry Market Reports

## Fogelsville

Directions—Take Rt 22 thruway. Exit at Fogelsville Exit North no stoplight in Fogelsville. Turn left, proceed 1 block, take next left turn. Poultry Auction 100 ft. on right

Tuesday, November 14

(Prices paid dock weights cents per pound except where noted)

Hens, light type 6-11, Hens, heavy type 7-20, mostly 8-16, Pullets, colored 26½-30, Roasters 15-28, mostly 26-28, Capons 34-44, mostly 37-43; Ducks 26-40, mostly 34-38, Drakes 52-62; Geese 30-39½, mostly 36-38, Turkeys, Hens 31-35, Rabbits 47-70, mostly 60-70, Guineas 40-56, mostly 45-55, Pigeons (per pr) 1 20-4 39

Total coops sold 560  
Auction every Tuesday Poultry received Monday 7 P M to 10 30 P M, Tuesday 7 A M to 12 Noon Sale at 11 30 A M

## Delmarva

Thursday, November 16

Ready-to-cook movement remains seasonally fair Slaughter schedules sharply reduced as occasional plant closes for a vacation period while others killing turkeys or in line with needs Less than trucklot prices unchanged on both Plant and U S Grade A Advance interest light at unchanged levels with this week Live supplies adequate though weights generally lighter than desired Undertone fully steady Negotiated trucklot prices 2-3 pound ready-to-cook broiler-triers for delivery next week

U S Grade A Plant Grade 27-27½ Pool trucklot prices for Friday arrival

U S Grade A 28½-32½ Mostly 28½-29

Plant Grade 27½-30½ Mostly 27½-28

## Eastern Pa. and N.J.

Wednesday November 15

Prices of light type hens held unchanged Demand fair though unaggressive as fully adequate supplies being offered from other producing areas to keep plants operating near capacity Trade advances indicate several producers cancelling offerings as a result of sharply advancing egg prices Heavy hens adequate for fair demand Other Holiday items adequate Light type hens 6-8½ mostly 7½-8 in Pa, 7½-8 in New Jersey Heavy type hens TFEWR

## New York Eggs

Thursday November 16

Prices generally unchanged Demand is spotty and only fair in wholesale trading Floor stocks of large adequate but irregular with some extra large mediums Smalls short with medium well cleared Shipping point offerings adequate to ample on the heavier weights receipts are restricted to anticipated needs and on shipment offerings are mainly less than top quality with occasional buyers seeking price reduction on this grade Un-

## Weekly New York Egg Market

(From Monday, November 13th to Friday, November 17th)

	Mon.	Tues.	Wed.	Thurs.	Fri.
<b>WHITE</b>					
Fcy Ex. Large	43	46	46	46	46
Large	43	46	46	46	46
Mediums	41	44	44	44	44
Pullets	37	40	40	40	40
Peewees	26	29	20	20	20
<b>BROWN</b>					
Fcy Large	51	51	51	51	51
Mediums	Unquoted				
Pullets	Unquoted				
Peewees	Unquoted				
Standards	36	38	38	38	38
Checks	19	20	20	20	20

Long Tone - Generally Steady

## Oklahoma City

Thursday, November 16

Estimated Receipts 11,000  
Same Day Last Week 13,803  
Same Day Last Year 8,450

Moderately active, compared to last last week, feeder cattle and calves under 600 pound 50c to 1 00 lower with some heifer calves 2 00-3 00 lower, feeder steers over 600 pound steady to 50c lower, not enough feeder heifers over 600 pound sold early to make an adequate test of the trade Majority receipts Good and Choice 350-700 pound steers and 300-600 pound heifers Steers over 800 pound very scarce early Fairly large attendance buyers

SALES AS OF 12:30 P.M.

**FEEDER STEERS** Choice 300-400 pound 53 00-55 50, load 342 pound at 60 00, few small lots 187-278 58 50-64 00 400-500 49 25-53 50, two small lots 400-405 54 00-54 50, 500-600 45 00-48 20 600-700 43 00-46 10 part load Prime 666 pound at 46 40 and part load 616 pound at 47 00 few 700-775 41 70-43 50, two small lots 806-843 38 25-38 30, Mixed Good and Choice 300-400 49 00-52 25 400-500 47 00-49 00, 500-600 42 25-45 00, small lot 682 pound at 42 50 Good 300-500 44 00-49 00 500-700 38 25-42 50, small lot 732 pound at 37 40, few Good 815-890 34 50-35 70, Good 542-700 Holstein Steers 36 00-40 00, 700-850 35 00-36 30

**FEEDER HEIFERS** Choice 300-400 pound 42 75-46 40, small lot 342 pound at 47 75, few 227-253 45 25-48 75 400-500 39 25-43 90, 500-600 38 50-40 50, few 600-685 38 70-41 00, Mixed Good and Choice 300-400 40 25-42 25, 400-500 37 75-39 50, 500-600 37 00-38 50, few Good 300-400 38 00-38 75, few 500-683 34 75-36 50

## LANCASTER FARMING

Lancaster County's Own Farm Weekly

P.O. Box 266 - Lititz, Pa 17543  
Office 22 L. Main St. Lititz Pa 17543

Record-Express Office Bldg  
Phone Lancaster 717-39-3047 or  
Lititz 717-626-219.

Richard E. Warner Editor  
Subscription price here \$4.00  
Lancaster County's Own Farm Weekly

Subscription price here \$4.00  
Lancaster County's Own Farm Weekly

Subscription price here \$4.00  
Lancaster County's Own Farm Weekly

Subscription price here \$4.00  
Lancaster County's Own Farm Weekly

Subscription price here \$4.00  
Lancaster County's Own Farm Weekly

## Lyng Tells

(Continued From Page 1)

an exchange of dialogue between farm and non-farm groups. The two should be able to agree on several basic facts concerning farming, he said. These would be that a prosperous farming community benefits everyone; and that there must be some government involvement in agriculture.

Mentioning other problems facing agriculture, Lyng touched on pollution controls, farm labor, the Occupational Safety and Health Act, and increased regulation of chemicals used both in food and for farming.

He called for a repeal of the Delaney amendment to the Food and Drug Act. This is the amendment which prohibits any trace, no matter how small, of any known cancer-producing agent, in any human food. Recently, the Food and Drug Administration banned the use of diethylstilbestrol (DES) in cattle feed because traces of the drug had been showing up in steer livers Lyng said increasingly effective detection methods had made the Delaney amendment obsolete.

Lyng pointed out that U.S. agriculture has been hailed as one of the wonders of the world. "Three percent of our people produce all the food for our country plus another \$10 billion worth of food for export," he said "We can do this here because our agriculture is an industry that uses massive amounts of capital and technology to replace massive amounts of labor"

There were other speakers at the dinner besides Lyng Outgoing Chamber of Commerce president Albert C. Wedge talked about the prosperous mixture of agriculture and industry which exists in the county

Three major problems confronting farmers in the county today were outlined by Daniel L. Martin, dairy farmer and a member of the chamber's agriculture committee, at the

## Feeder Sale

Abingdon, Virginia

Tuesday, November 14

There were 266 head sold.

Steers

Choice and Fancy 300 - 400 pounds 48 25 - 53 50, 405 - 500 45 25 - 48 00

Good 300 - 400 pounds 49 25 - 53 75, 405 - 500 46 75 - 47 50

Medium 300 - 400 pounds 47 50 - 53 25, 405 - 500 44 50 - 45 75.

Heifers

Choice and Fancy 300 - 400 pounds 40 50 - 42 00, 405 - 500 38 00 - 39 75

Good 300 - 400 pounds 39 70 - 41 50, 405 - 500 37 00 - 38 00

Medium 300 - 400 pounds 41 75 - 44 80, 405 - 500 37 50

Here's High Proof

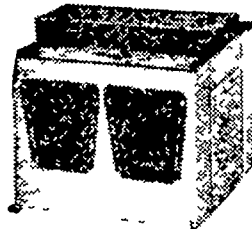
Whiskies in the United States are generally 103-proof when barreled and contain 51.5 per cent alcohol

It's a Great Lake

Of the Great Lakes only Lake Michigan is completely inside the United States. The other four are shared with Canada



THEIR THIRST COMES FIRST



WITH Ritchie AUTOMATIC LIVESTOCK FOUNTAINS

Lowest cost sparkling water-pipeline cool in summer, warm in winter for maximum consumption. Fastest gains. Quiet operation, built-in water temperature control completely automatic. 26 models. See brochure.

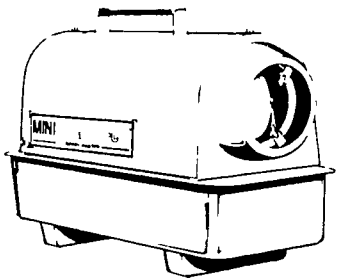
Lester A. Singer  
Lons, Pa. 687 6712

annual Agriculture Industry Banquet Thursday.

Martin said these problems include an inflating economy, which finds the farmers at the tail end; the rapid growth of the Lancaster area, which is a threat to the agricultural community; and the shadow of tax reassessment which could price farmers out of business if they are taxed on the potential use of their land, rather than its agricultural use.

County Agent Max Smith was the last speaker of the evening. He pointed to the constant pressures of urban sprawl, and the toll it takes in county farmland. He then urged the Chamber of Commerce to be as energetic in preserving agriculture here in the next ten years as it has been promoting tourism in the county and taking land out of farm production in the past ten years.

## NEW! The Mini-Furnace Portable Heater



The cold weather answer for building contractors, farmers, sportsmen, warehouse men, outside contractors anyone who needs high volume circulating heat around the clock. A truly powerful portable heater for its size. Gives you full heat instantly. Runs over 12 hours on one tankful of low cost kerosene or #1 fuel oil. Under 30 inches in length weighs 41 pounds and easily carried in the trunk of your car.

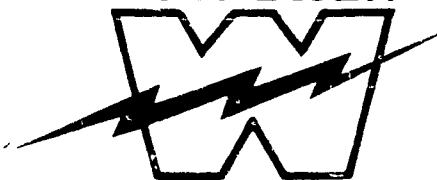
Beat the cold rush and come in for a free demonstration

REDDY HEATER

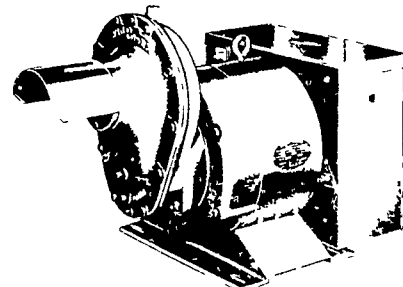
## GEHMAN BROS.

SALES & SERVICE  
1 Mile North of Terre Hill on Route 897  
East Earl, R. D. 1, Penna.  
Phone 215-445-6272

## WINPOWER



TRACTOR DRIVEN ALTERNATORS



INSURE YOUR FARM OPERATIONS AGAINST POWER OUTAGES HAVE EXPERIENCED PEOPLE INSTALL & SERVICE

CALL NOW

L. J. EDWARDS  
FARM SALES, Manager

WORLDS LARGEST MFG. OF TRACTOR-DRIVEN ALTERNATORS

PTO Units Available From 7 KW to 60 KW 20 Year Warranty

POWER WHEN YOU NEED IT MOST

1800 RPM

INSIST on a FREE WINPOWER DEMONSTRATION

at YOUR Farm Before You Buy ANY Tractor Driven Alternator

## ELECTROMECH

ROUTE 207 EPHRATA PA 17522

PHONE (717) 733-7911

LP NATURAL GAS GASOLINE DIESEL ENGINE GEN SETS TO 200,000 WATTS

ELECTRIC MOTOR & GENERATOR POWER TOOL SPECIALISTS