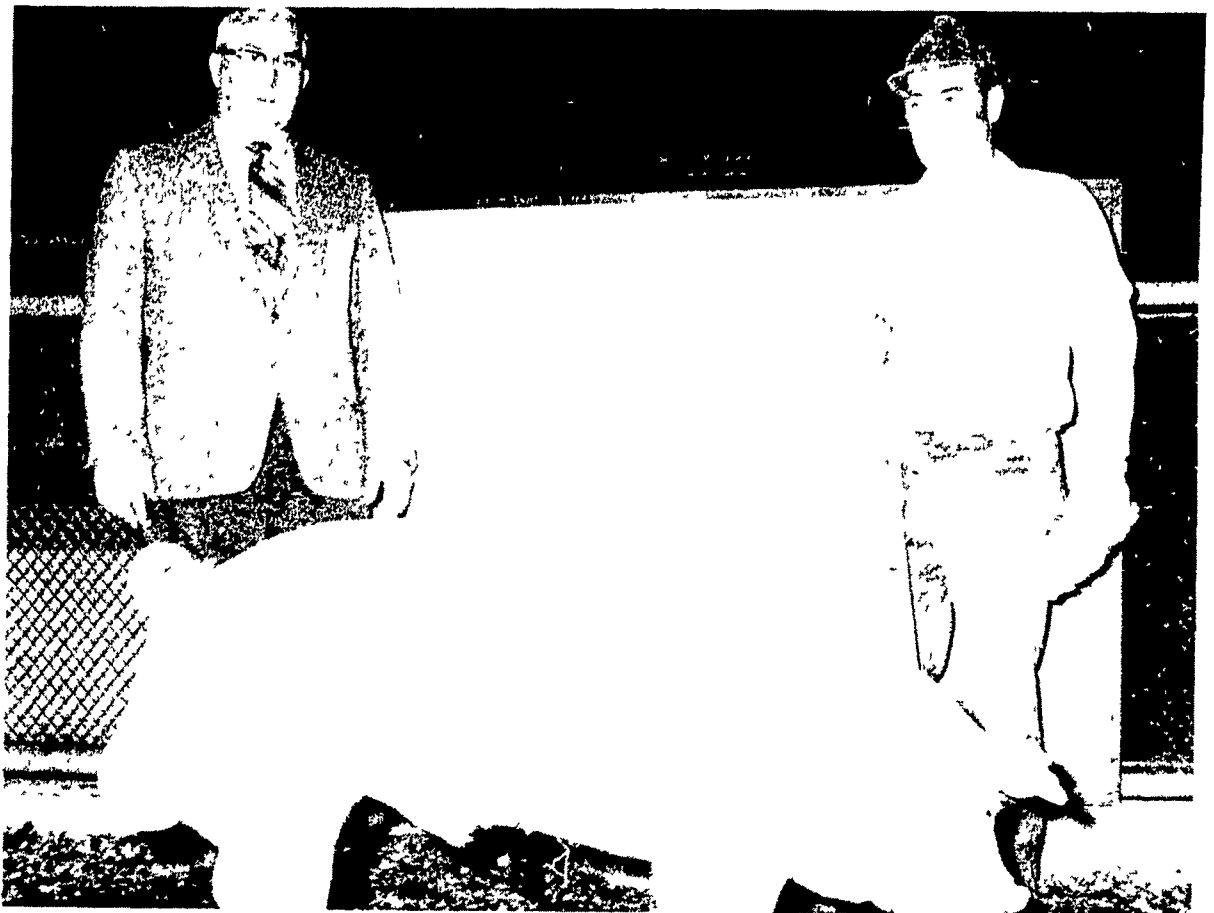


James T. Parlett, Airville, (right), was premier exhibitor of Chester White's in the breeding swine show at the Keystone Livestock Exposition at Harrisburg this week. Shown following the show are Parlett with his champion boar 'TM Mr. Fortune 19-1', and Rex Whitmore (left), judge at the show.

Parlett also exhibited the reserve champion gilt.



**Reynolds & Yellot**  
 COMPANY INC.  
 REISTERSTOWN,  
 MARYLAND  
 833-1840  
 Builders Since 1953

**Pole-type Farm Buildings**

### Weaver Promotes Glick, Lafferty

Ray S Glick, 21 Brownstone Ridge, New Holland, has been named to the position of Assistant Controller at Victor F Weaver, Inc., New Holland.

Glick, a native of Lancaster County, joined Weaver in 1968 as a Cost Accountant. In 1969 he was promoted to the position of Chief Accountant, responsible for the company's entire accounting activities.

In a related move, R James Lafferty, 73 Sunrise Avenue Lancaster, has been named to the position of Chief Accountant vacated by Glick.

Lafferty, who holds a B.S. degree in Business Administration from Elizabethtown College, joined Weaver in 1969 as a Cost Accountant. In 1971 he was named to the position of Cost & Budget Analyst.

#### Snappy Product

There are about 225 pounds of rubber products used in the average passenger automobile — only about 100 pounds of this being in the tires with the remaining pounds being used to make up over 750 component parts.



**THIS** is a hunting month — and a harvest month. Be a careful hunter. Handle your gun safely — protect yourself, your friends and your dog from injury.

**HARVEST ACCIDENTS** are too common — turn off the power before adjusting or unclogging machinery; corn pickers have taken off too many hands. Avoid wearing loose, floppy clothes which might get caught in machinery.



**Red Rose DOG FOOD**



—ideal for puppies

Red Rose is a balanced diet. All the essentials dogs need for sound growth and vigor are blended into this tasty ration—good for dogs of all ages and breeds.

- |  |   |   |   |
|--|---|---|---|
| <b>WALTER BINKLEY &amp; SON</b><br>Lititz    | <b>E. MUSSER HEISEY &amp; SON</b><br>RD 2, Mt Joy, Pa | <b>MARTIN'S FEED MILL</b><br>Ephrata, Pa. | <b>MUSSER FARMS, INC.</b><br>Columbia                           |
| <b>MOUNTVILLE FEED SERVICE</b><br>Mountville | <b>HEISTAND BROS.</b><br>Elizabethtown                | <b>G. R. MITCHELL, INC.</b><br>Refton, Pa | <b>RED ROSE FARM SERVICE, INC.</b><br>N Church St., Quarryville |
| <b>ELVERSON SUPPLY CO.</b><br>Elverson       | <b>DAVID B. HURST</b><br>Bowmansville                 | <b>BROWN &amp; REA, INC.</b><br>Atglen    | <b>CHAS. E. SAUDER &amp; SONS</b><br>Terre Hill                 |
| <b>HENRY E. GARBER</b><br>Elizabethtown, Pa. | <b>SHELLY BROTHERS</b><br>RD 2, Manheim, Pa.          | <b>E. P. SPOTTS, INC.</b><br>Honey Brook  | <b>H. M. STAUFFER &amp; SONS, INC.</b><br>Witmer                |

the **PATZ** BARN CLEANER

**RUGGED, DEPENDABLE!**  
under all operating conditions

See your PATZ Dealer today  
 CALL 717-272-0871  
**MARVIN J. HORST**  
 Dairy Equipment and Ammana Appliances  
 R.D. No. 1 (Iona)  
 Lebanon, Pa.  
 Located on Route 897 between Schaefferstown and Lebanon, over 30 years in business at same place.