

Hog Prices

Lancaster Market

Monday, October 30
Barrows and Gilts steady to 25 higher; Sows scarce.
BARROWS AND GILTS: US 1 200-230 lbs. 30.00-30.50; US 1-2 200-245 lbs. 29.25-29.50; US 2-3 190-255 lbs. 29.00-29.25; US 3-4 260-280 lbs. 28.00-28.50.

New Holland Auction

Monday, October 30
Hogs 887; Barrows & Gilts; Mostly 50c lower. US No. 1-2 200-240 lbs. 29.35-31.00; US No. 1-3 200-245 lbs. 28.75-29.35; US No. 2-4 235-270 lbs. 28.00-28.75; US No. 2-4 160-190 lbs. 27.00-28.75.
Sows: US No. 1-3 300-580 lbs. 23.00-26.00
Boars: 23.50-24.75

St. Louis Auction

HOGS: 5000, slow, steady
US 1-2 200-230 lbs. 28.75-29.00; 1-3 190-230 lbs. 28.50-28.75; 230-260 lbs. 28.00-28.50; 2-4 240-270 lbs. 27.00-28.00

Peoria Auction

HOGS: 4000, active, fully steady to strong
US 1-2 200-230 lbs. 28.25-28.75; 1-3 200-250 lbs. 27.50-28.25.

Indianapolis Auction

HOGS: 3000, fairly active, weak to 25 lower US 1-2 200-240 lbs. mostly 28.50; 170 head 28.75; 1-3 200-250 lbs. 28.00-28.50, bulk 28.25.

U. S. Inspected Livestock Slaughter

Estimated Daily Livestock Slaughter Under Federal Inspection

	CATTLE	HOGS	SHEEP
Week to date	498,000	1,371,000	166,000
Same period last wk.	472,000	1,174,000	143,000
Same period last yr.	478,000	1,431,000	161,000

Lebanon Valley Auction

Tuesday, October 31
186 Head of Hogs
Barrows and Gilts 25 cents higher.
BARROWS AND GILTS: U.S. 2-3 190 - 245 pounds 29.00 - 29.35, one lot 29.60; 2-4 190 - 250 28.75 - 28.85.
SOWS: U.S. 1-3 300 - 400 pounds 26.00 - 26.75; 2-3 350 - 575 24.25 - 26.00.
BOARS: 22.50 - 23.25.

Vintage Auction

Tuesday, October 31
Barrows and Gilts strong to 50 higher.
BARROWS AND GILTS: US 1-2 195 - 255 lbs. 29.35-29.60; U.S. 1-3 195-255 lbs. 29.00-29.50; US 3-4 280-295 lbs. 25.85-26.00; US 2-3 320-550 lbs. 24.50-25.25.

Lancaster Auction

Wednesday, November 1
Barrows and Gilts mostly steady.
BARROWS AND GILTS: US 1 215-230 lbs. 30.25; US 1-3 200-245 lbs. 29.00-29.35; one lot US 3-4 225 lbs. 28.50.
SOWS: US 2-3 335-575 lbs. 24.35-25.50.

New York Dressed Meats

Thursday, November 2
Compared with Wednesday, steer and heifer beef generally weak; veal, calf and lamb steady to weak, pork loins 50 cents to \$1.00 lower, butts 50 cents lower, picnics and spareribs steady, hams steady to 50 cents higher.
General outlet for fresh meats tending narrow early this session

Peoria Cattle

Thursday, November 2
Cattle weekly: receipts this week 4800; last week 4889; last year 3746. as compared to last weeks close, slaughter steers ended fully 50 lower. Slaughter heifers were 25 to mostly 50 lower. Cows and bulls 50-1.00 lower. Supply mainly Choice slaughter steers and heifers, with several loads Choice to Prime. Receipts about 65 percent steers; 30 percent heifers; 5 percent cows.

SLAUGHTER STEERS: High Choice and Prime 1150 - 1325 pounds 3-4 35.50 - 36.00. Choice 1000 - 1340 2-4, 34.50 - 35.50; mostly 34.25 - 35.25, including load 1410 pounds at 34.50. Mixed Good and Choice 925 - 1225 pounds 34.00 - 34.50. Good 31.75 - 34.00. Load Standard with few Good Holsteins 31.75.

SLAUGHTER HEIFERS: Mixed Choice and Prime 950-1070 pounds 2-4, 34.00 - 34.50. Choice 800 - 1050 2-4, 33.25 - 34.00; mostly 33.50 - 34.00. Mixed Good and Choice 775 - 950 32.00 - 33.50. Good 30.00 - 32.00.

COWS: Commercial 21.50 - 24.00. Utility 23.00 - 24.75. High Yielding Utility 24.75 - 25.25; few 25.50. Cutter 20.50 - 24.00. Canner 18.00 - 20.50.

BULLS: Utility and Commercial 29.00 - 32.00; Few 33.00.

Futures Trading

(Closing bids as of Thursday, November 2)

	Chicago Cattle	Chicago Hogs	New York Maine Potatoes	Chicago Fresh Eggs
November			4.00	33.50
December	35.90	29.40		38.60
January '73				39.10
February	37.90	29.35		39.30
March			4.72	39.40
April	37.80	26.55	4.92	38.50
May			5.57	35.10
June	37.55	27.40		
July		27.32		
August	36.90	25.60		
October	36.40	24.10		
December		23.88		

Trend - Cattle are steady, Hogs are steady, Potatoes are steady, and Eggs are lower.

a-asked b-bid n-normal

Markets provided by Commodity Dept., Reynolds Securities, Inc.

Lebanon Valley Auction

Tuesday, October 31
359 Head of Cattle

Compared with last weeks market, slaughter steers grading Good 50 cents lower. Cows \$1.75 to \$2.25 lower. Slaughter bulls \$1.50 lower.

STEERS: Choice (few) 1050 - 67.00.

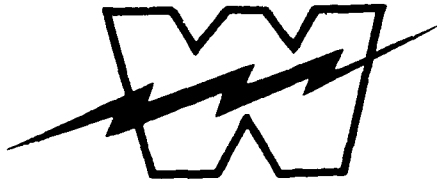
Choice Beef Cuts

Hinds (Steer) 145 - 190 pounds 65.00 - 68.50; Arm Chucks 90 - 105 47.00 - 50.00; Ribs (7-rib) 34 - 40 66.00 - 74.00; Loins (Trmd) 50 - 70 84.00 - 86.00; Rounds (Steer) 70 - 95 65.00 - 67.00; Full Plates 31.50 - 32.00; Hinds (Heifer) 120 - 170 62.50 - 64.50.

Fresh Pork Cuts

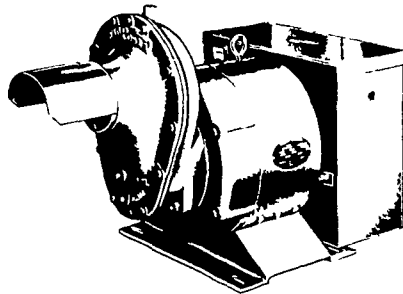
Loins (Regular) 8 - 14 pounds 66.00 - 69.00; 14 - 17 62.00 - 65.50; Picnics (Regular) 4 - 8 36.50 - 38.50; Boston Butts 4 - 8 47.50 - 49.00; Spareribs 14 pounds down 64.00 - 66.50; Hams (Skinned) 14 pounds down 64.00 - 66.50; 14 - 17 58.00 - 60.00; 17 - 20 55.00 - 56.50.

WINPOWER



WORLD'S LARGEST MFG. OF TRACTOR-DRIVEN ALTERNATORS

TRACTOR DRIVEN ALTERNATORS



PTO Units Available From 7 KW to 60 KW 20 Year Warranty

POWER WHEN YOU NEED IT MOST

1800 RPM

INSIST on a FREE WINPOWER DEMONSTRATION

at YOUR Farm Before You Buy ANY Tractor Driven Alternator

L. J. EDWARDS FARM SALES, Manager

CALL NOW



ELECTROMECHANICAL SERVICE ROUTE 222, EPHRATA, PA. 17522 PHONE (717) 733-7911

LP-NATURAL GAS GASOLINE DIESEL ENGINE GEN SETS TO 200,000 WATTS

ELECTRIC MOTOR • GENERATOR • POWER TOOL SPECIALISTS

Oklahoma City

Thursday, November 2

Estimated Receipts 6,900
Same Day Last Week 9,300
Same Day Last Year 10,975

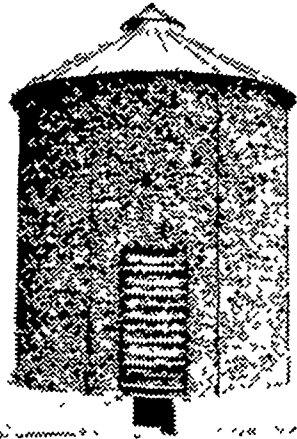
Moderately active, compared to late last week, feeder cattle over 500 pound steady to 50c lower, instances 1.00 lower; feeder calves under 500 pound 1.00-3.00 lower. Salable receipts sharply curtailed due to abundant rainfall in the marketing area totaling up to 10 inches in some localities, majority receipts Good and Choice 350-750 pound steers and 300-650 pound heifers, moderate attendance buyers.

SALES AS OF 12:30 P.M.

FEEDER STEERS: Choice 300-400 pound 53.00-57.00, 400-500 48.50-54.75, largely 49.75-53.50; 500-600 45.50-50.50, mainly 46.50-49.25, 600-700 44.00-45.80, few part loads 604-612 46.90-47.10 and part load 579 pound at 48.50, 700-800 42.00-44.00, part load 705 pound at 44.50, few 800-850 40.00-42.80, Mixed Good and Choice 300-400 49.50-52.50, 400-500 47.00-49.50; 500-600 43.00-45.50, few 600-650 42.00-42.50, Good 300-500 44.00-48.50, 500-700 39.75-42.00, Good 538-700 Holstein Steers 37.25-39.50, two part loads Good 787-791 Holstein Steers at 35.90

Still your best crib buy
See Us Today

Over 1200 bu. capacity



EXCLUSIVE SPEEDY ROOF RAFTERS MAKE SPEEDY CORN CRIBS

Twice as Fast

Twice as easy to erect

Speedy roof rafters guarantee easy, proper placement of roof panels the first time. Rafters add great strength to the roof. Panels need only to be bolted together in three places. It's another big time-saving feature you get only in Speedy Bar-Lok corn cribs.

Stands up best—lasts longer
Wire mesh panels are 5-gauge wire—thick as a "4" bolt! No

bulge or sag. Sturdy 26-gauge galvanized roof is securely anchored to 9 steel roof rafters and side panels. Can't blow off!

Come in today and see the Speedy Bar-Lok corn crib. Let us prove to you that Speedy is twice as fast—twice as easy to erect. Let us show you all the other features that make Speedy Bar-Lok your best corn crib buy.

GRUMELLI FARM SERVICE
Quarryville, Pa.
Ph: 786:3630

LANDIS BROS. INC.
Lancaster, Pa.
Ph. 393-3906