

Hog Prices

Vintage Auction

Tuesday, October 24
Barrows and Gilts 1.00-1.25 lower.

BARROWS AND GILTS—US 1 210-235 lbs. 29.35-29.85; US 1-2 200-240 lbs. 29.00-29.25; US 2-3 195-255 lbs. 28.60-29.00.

Saturday, October 21

Hogs 663. Barrows and Gilts unevenly steady. US No. 1-2 190-240 lbs. 29.85-30.60; US No. 1-3 190-250 lbs. 29.25-29.75; US No. 2-4 240-270 lbs. 29.10-29.50; Few 2-4 170-190 lbs. 25.00-26.85; Sows US No. 1-3 245-555 lbs. 25.25-26.85; Few Boars 24.10-24.50.

St. Louis Auction

ST. LOUIS HOGS—5000, 50 higher, active US 1-2 200-230 lbs. 29.00; 1-3 190-240 lbs. 28.75-29.00.

Indianapolis Auction

INDIANAPOLIS HOGS—1500, unevenly 50-1.00 higher, active US 1-2 200-235 lbs. 28.75-29.00; 50 head 29.25; 1-3 200-250 lbs. 28.25-28.75.

New Holland Auction

Monday, October 23
Hog Receipts 907. Barrows and Gilts steady to 25c higher. US No. 1-2 220-235 lbs. 30.30-30.50; US No. 1-3 200-245 lbs. 29.50-30; US No. 2-4 235-270 lbs. 28.50-29.50; Sows US No. 1-3 300-575 24.50-26.00; Boars 22.50-24.50.

Peoria Auction

PEORIA HOGS—3500, active, 25-50 higher; US 1-2 200-230 lbs. 28.75-29.00, 150 head 29.25; 1-3 200-250 lbs. 28.50-28.75.

U. S. Inspected Livestock Slaughter

Estimated Daily Livestock Slaughter Under Federal Inspection			
	CATTLE	HOGS	SHEEP
Week to date	462,000	1,180,000	145,000
Same period last week	507,000	1,332,000	166,000
Same period last year	615,000	1,699,000	219,000

Lancaster Market

Monday, October 23
No Monday Report due to Veterans Day Holiday.

Lancaster Auction

Wednesday, October 23
Barrows and Gilts 75-1.00 lower.

BARROWS AND GILTS—US 1 200-230 lbs. 30.25; US 1-3 190-245 lbs. 28.75-29.25; Few US 2-3 235-250 lbs. 28.50-28.60.

Lebanon Valley Auction

Tuesday, October 24
260 Head of Hogs
Barrows and Gilts \$1.00 lower.
BARROWS AND GILTS: U.S. 1-2 (1 lot) 205 pounds 29.25; 2-3 190-235 28.75 - 29.00; 2-4 220 - 280 28.35 - 28.60.
SOWS: U.S. 2-3 350 - 550 pounds 24.50 - 25.50.
BOARS: (Few) 23.25 - 24.75.
22 Head Feeder Pigs
U.S. 1-3 35 pounds (1 lot) 17.00 per head.

Lebanon Valley Auction

(Continued From Page 2)

38.35; Utility and Commercial 33.00-35.60; Cutters 30.85-32.85.
313 Head of Veal Calves
Prime 61.00-63.50; Choice 59.00-61.00; Good 54.50-57.50; Standard 47.00-54.00; Utility 90-120 pounds 40.00-47.00; 70-85 pounds 37.00-40.00.
FARM CALVES: Bulls 80-120 pounds 42.00-50.00; Heifers 80-140 pounds 55.00-68.00.

Omaha Cattle

Thursday, October 26

Compared to previous week's close closing prices 1000-1125 pound slaughter steers weak to 25c lower, 1125-1300 pounds 25-50c lower. Heifers weak to 25c lower. Cows were 1.00-1.50 lower. Bulls steady. Modest feeder supply steady with outgo of fleshy 950-1075 pound two-way steers noticeably reduced from most recent weeks.

Four day receipts 15,700 as compared 18,200 previous week and 16,900 a year ago. Slaughter steers approximately 30 percent and heifers 39 percent with liberal percentage Choice and moderate volume High-Choice and Prime. Cows 9 percent and feeders near 20 percent. Prices on slaughter steers forced downward as a consequence of lowered carcass quotations. Best demand centered on 1000-1125 pound weights in reflection of 1.00-1.50 differential between 500-700 pound carcasses and those in the 800-900 pound bracket and as much as 4.00-5.00 on some yield grade 4 and 5. Most interests entered the week with fairly liberal inventories on hand and the slaughter period was disrupted by a non-slaughter Veteran's Holiday in many plants on Monday.

STEERS: Forepart of week, twelve loads High-Choice and Prime 1049-1173 pounds 2-4 35.40-35.85. At midweek, six loads same grade 1082-1186 3-4 35.25-35.35, two loads 1356-1381 4 34.75-35.00. Choice 975-1262 2-4 closed 34.00-35.00, those at latter price mainly 1000-1125 pounds. Mixed Good and Choice 950-1225 33.50-34.00 occasionally 34.25. Good 32.50-33.75, Holsteins 32.50-33.50 during week. Standard and Low-Good 31.50-32.50.

Average cost slaughter steers first three days 34.77 average weight 1142 pounds as compared 34.52 and 1138 pounds previous week and 32.42 and 1101 pounds a year ago.

HEIFERS: Early, twelve loads High-Choice and Prime 925-1076 pounds 3-4, 34.35-34.50. At midweek, five loads High-Choice and Prime 935-1094 3-4 34.10-34.25. Choice 825-1050 closed 33.25-34.00, load 1158 pounds 4-5 32.50. Mixed Good and Choice 750-975 32.25-33.25. Good 30.50-32.25. Small lots Standard and Good 29.50-30.50.

Futures Trading

(Closing bids as of Thursday, October 26)

	Chicago Cattle	Chicago Hogs	New York Maine Potatoes	Chicago Fresh Eggs
November			4 08	32.15
December	35 95	28.85		37.95
January '73				38.80
February	37 80	28.35		38.95
March			4.76	38 80
April	37.70	25.55	4 91	37.50
May			5.54	34.50
June	37 70	26.45		
July		26.45		
August	37.15	25.00		
October		23.52		

Trend - Cattle are steady, Hogs are stronger, Potatoes are steady and Eggs are stronger.

a-asked b-bid n-normal

Markets provided by Commodity Dept., Reynolds Securities Securities, Inc.

New York Dressed Meats

Compared with Wednesday, Choice and Prime steer beef fully 50c lower with 800 pound up carcasses \$1.00 lower Choice heifers weak to 50c lower. Veal steady, calf 50c to \$2 lower. Lamb steady to weak. Pork loins 50c to \$1.00 lower, picnics and hams mostly \$2.00 lower, butts \$1.00 lower and spareribs \$1.00 higher.

Good steer carcasses limited throughout and clearing at fully steady prices. General demand for beef and bulk other fresh meat classes relatively narrow and meat purchases by volume accounts holding conservative.

Steer Beef

Prime 600-900 pounds 56 50-58 00, 500-700 56.00-57 00, 700-800 55 75-56 50, 800-900 55 25-56.00; Good 500-800 54.00-56.00.

Heifer Beef

Choice 500-700 pounds 54.00-55.00

Calf (Skin Off)

150-350 pounds
Choice 77.50-81.50; Good 73.50-77 50, Standard 68.00-72.00

Veal (Skin Off)

Choice 90-150 pounds 93.00-101 00; Good 60-90 85.00-90.00; Standard 60-120 72 00-75.00.

Lamb

Choice 30-65 pounds 64.50-67.50.

Choice Beef Cuts

Hinds (Steer) 145-190 pounds 65 00-68 50, Arm Chucks 90-105 49 00-51 00, Ribs (7-rib) 34-40 64 00-72 00, Loins (Trmd) 50-70 84 00-86 00; Rounds (steer) 70-95 65 00-66 50, Full Plates 31.00-31.50, Hinds (Heifer) 120-170 62 00-64.00.

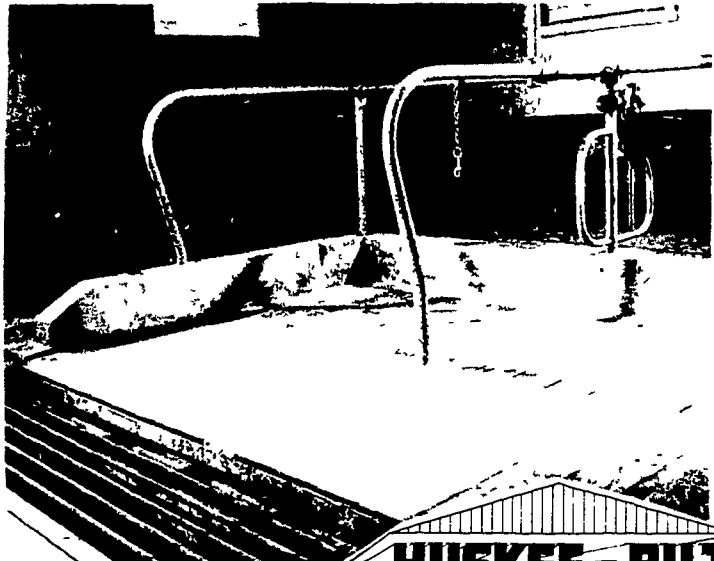
Fresh Pork Cuts

Loins (regular) 8-14 pounds 67.50-70.50; 14-17 65.00-68.50, Picnics (regular) 4-8 37 00-39.00, Boston Butts 4-8 49.00-50.50, Spareribs 3 pounds down 61.00-63 00; Hams (skinned) 14 pounds down 63 00-65.50, 14-17 56.00-58.50; 17-20 54.00-56.00

NOW IS THE TIME TO THINK . . .

COW MATS

With the High Price of Bedding



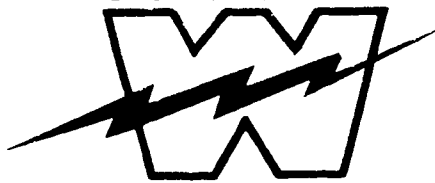
HUSKEE-BILT STRUCTURES

- LANCASTER SILOS
- BADGER EQUIPMENT

SHOW EASE STALL CO.

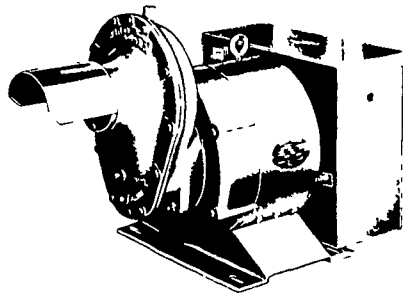
523 Willow Road Lancaster, Pa. 17601
Phone 299-2536

WINPOWER



WORLD'S LARGEST MFG. OF TRACTOR-DRIVEN ALTERNATORS

TRACTOR DRIVEN ALTERNATORS



PTO Units Available From 7 KW to 60 KW 20 Year Warranty

POWER WHEN YOU NEED IT MOST

1800 RPM

INSURE YOUR FARM OPERATIONS AGAINST POWER OUTAGES HAVE EXPERIENCED PEOPLE INSTALL & SERVICE

INSIST on a FREE WINPOWER DEMONSTRATION at YOUR Farm

Before You Buy ANY Tractor Driven Alternator

L. J. EDWARDS
FARM SALES, Manager



ELECTROMECC
ELECTROMECHANICAL SERVICE
ROUTE 222, EPHRATA, PA. 17522

PHONE (717) 733-7911

LP-NATURAL GAS
GASOLINE
DIESEL
ENGINE GEN.
SETS TO
200,000 WATTS

ELECTRIC MOTOR • GENERATOR • POWLR TOOL SPECIALISTS

MANURE PITS

24-36 ft., 48 ft. & 60 ft. Diameter 12 ft. Deep circular precast concrete with Gunite coated interior

ZIMMERMAN INDUSTRIES, INC.
R.D. No. 1 Ephrata, Pa. 17522
733-6166