

Poultry Market Reports

Fogelsville

Tuesday, October 17
 (Prices paid dock weights cents per pound except where noted).
 Fowl-Leghorn 6-11; Fowl-Colored 8-19; Pullets-Colored 30-33; Roasters 30-35; Ducks 29-43½; Drakes 10-57, mostly 50-57; Turkey Hens 33½-35; Rabbits 40-45; Gunneas 45-60, mostly 45-50; Pigeons (per pr.) 1 15-4.18.
 Total coops sold 504
 Auction every Tuesday
 Poultry received Monday 7 P M to 10:30 P M, Tuesday 7 A.M. to 12 Noon Sale at 11:30 A.M.

Delmarva

Thursday, October 19
BROILERS
 Ready-to-cook movement fair but generally lacking usual weekend aggressiveness in some quarters Slaughter about steady. Advance interest slow in developing. Less than trucklot prices ½ cent lower on both Plant and U S Grade A Live supplies adequate with weights mostly desirable though occasional trending heavier. Undertone unsettled Negotiated trucklot prices 2-3 lb. ready-to-cook broiler fryers for delivery next week U S Grade A - Plant Grade 27-27½.
 Pool trucklot prices for Friday arrival U.S. Grade A 28½-32½, Plant Grade 27½-30½.

Feeder Sale

Tri-State Virginia
Wednesday, October 18
 There were 1,998 head sold.
Steers
 Choice and Fancy: 500-700 pounds 43.75-46.50; 700-800 40.00-41.65; 800-1000 36.40-39.00.
 Good: 500-700 pounds 40.00-47.00; 700-800 39.25-42.20; 800-1000 35.00-39.70.
 Medium: 500-700 pounds 40.00-45.80; 700-800 38.30-40.90; 800-1000 34.50-38.80.
 Common 500-700 pounds 39.00-43.75; 700-800 36.85-39.00; 800-1000 32.00-35.50.
 Short: 500-700 pounds 38.50-42.30
Abingdon, Virginia
Tuesday, October 17
 There were 1,044 head sold.
Steers
 Choice and Fancy: 300-400 pounds 51.75-54.00; 400-500 46.25-49.75; 500-600 45.00-47.30.
 Good: 300-400 pounds 49.40-56.25; 400-500 45.00-49.40; 500-600 43.25-46.40
 Medium: 300-400 pounds 46.25-52.75; 400-500 46.75-47.00; 500-600 41.75-44.00
Heifers
 Choice and Fancy: 300-400 pounds 42.50-44.00; 400-500 41.00-43.70; 500-600 37.75-39.30
 Good: 300-400 pounds 41.00

LANCASTER FARMING

Lancaster County's Own Farm Weekly
 P O Box 266 - Lititz, Pa. 17543
 Office 22 E. Main St., Lititz, Pa. 17543
 Record-Express Office Bldg.
 Phone Lancaster 717-394-3047 or Lititz 717-626-2191
 Richard E. Wanner, Editor
 Subscription price: \$2 per year in Lancaster County \$3 elsewhere
 Established November 4, 1955
 Published every Saturday
 by Lancaster Farming,
 Lititz, Pa.
 Second Class Postage paid
 at Lititz, Pa. 17543
 Members of Newspaper Farm Editors Assn., Pa. Newspaper Publishers Association, and National Newspaper Association.

Weekly New York Egg Market

	(From Monday, October 16th to Friday, October 20th)				
	Mon.	Tues.	Wed.	Thurs.	Fri.
WHITE					
Fcy. Ex. Large	36	36	36	36	36
Large	34	34	34	34-35	34-35
Mediums	31	31	31	31-32	31-32
Pullets	24	25	25	26	26
Peeweens	14	15	15	15	15
BROWN					
Fcy. Large	39	39	39	39	39
Mediums	Unquoted				
Pullets	Unquoted				
Peeweens	Unquoted				
Standards	29	29	29	29	29
Checks	16½	16½	16½	16½	16½

Long Tone - Undertone at some points showing further improvement. Supplies generally fully adequate.
 Copyright 1972 Urner Barry Publications.

New York Eggs

Thursday, October 19
 Prices trended higher. Demand, locally, slow to fair on large, fair on medium for light to moderate floor stocks with some unfilled inquiry on smalls. Offerings from country points fully adequate to ample with some distributors restricting receipts particularly where shippers are asking higher prices.
 Carton activity just fair. Undertone barely steady on large, steady to firm on medium and smalls.

41.50; 400-500 40.50-42.10; 500-600 36.00-38.00.
 Medium: 300-400 pounds 38.90-40.50; 400-500 39.75-40.70; 500-600 33.75-39.00.

Narrows, Virginia
Tuesday, October 17
 There were 1,030 head sold.
Steers
 Choice and Fancy: 300-400 pounds 53.25 - 55.50; 405 - 500 46.50 - 52.50; 505 - 600 42.50 - 45.75.
 Good: 300 - 400 pounds 53.50 - 55.00; 405 - 500 44.50 - 50.00; 505 - 600 43.00 - 43.50.
 Medium: 300 - 400 pounds 50.50 - 52.25; 405 - 500 43.00 - 51.00; 505 -

Eastern Pa. and N.J.

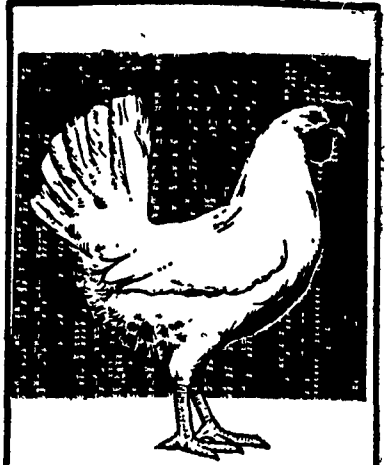
Wednesday, October 18
LIVE HENS
 No Market reported.

600 42.50 - 54.75.
Heifers
 Choice and Fancy: 300 - 400 pounds 40.50 - 42.75; 405 - 500 31.25 - 42.50; 505 - 600 36.00 - 38.00.
 Good: 300 - 400 pounds 42.25 - 42.50; 405 - 500 38.00 - 43.50; 505 - 600 35.50 - 36.75.
 Medium: 300 - 400 pounds 39.50 - 40.00; 405 - 500 35.00 - 40.25; 505 - 600 35.50.

Jonesville, Virginia
Friday, October 13
 There were 664 head sold.
Steers
 Choice and Fancy: 300 - 400 pounds 50.25 - 55.25; 405 - 500 47.75 - 50.00; 505 - 600 44.00 - 45.75.
 Good: 300 - 400 pounds 48.50 - 53.75; 405 - 500 46.25 - 48.75; 505 - 600 45.00 - 45.75.
 Medium: 300 - 400 pounds 46.25 - 52.75; 405 - 500 46.00 - 49.00; 505 - 600 43.00 - 45.50.
Heifers
 Choice and Fancy: 300 - 400 pounds 38.00 - 43.00; 405 - 500 37.75 - 42.00; 505 - 600 38.00 - 43.00.
 Good: 300 - 400 pounds 38.25 -

Wild Turkey Supply To Be Supplemented

The Pennsylvania Game Commission has 3,250 turkeys in four hardening areas throughout the state to supplement the natural supply of wild birds which will be available to hunters this fall.
 The birds were raised at the Commission's State Wild Turkey Farm in Lycoming County and then transferred at the age of 12 to 14 weeks to the hardening areas. They will be released later this month on lands which are open to public hunting.
 There are no birds in hardening pens in the Northcentral and Southcentral Field Divisions this year, since ample supplies of these birds are produced in the wild in these areas.
 Hardening pens are about 40-acre tracts located in prime wild turkey habitat and enclosed with high wire mesh fences. Here the birds have complete freedom under conditions similar to those



sustain top production with the BABCOCK B-300

Keeping production up...costs down...is the profit key in poultry operations. And more and more records on commercial flocks of Babcock B-300's...*"The Businessman's Bird"*...show sustained production of top quality eggs...often with an additional 20 to 30 eggs per bird housed over other strains. Come In... look at the records and the B-300...*"The Businessman's Bird"*.



BABCOCK FARMS, INC.
 Telephone (717) 626-8561

Turn the Light Off

The light in your oven is to aid you in seeing the progress of your baking or roasting. Extension foods and nutrition specialists at Pennsylvania State University say you shouldn't bake with the light on continuously. The light throws extra heat into the corner of the oven where it's located and can possibly cause uneven baking.

41.25; 405 - 500 36.00 - 40.50; 505 - 600 40.25 - 43.00.

Medium: 300 - 400 pounds 37.00 - 40.75; 405 - 500 34.00 - 37.50; 505 - 600 34.50 - 38.00.

Saunton, Virginia

Tuesday, October 17
 There were 1,018 head sold.
Steers
 Choice and Fancy: 500-700 pounds 42.75-45.00; 705-800 41.25-43.25; 805-1000 35.75-39.00.
 Good: 500-700 pounds 41.50-46.00; 705-800 40.00-41.75; 805-1000 35.75-39.75.
 Medium: 500-700 pounds 40.50-45.25; 705-800 38.25-39.50.
 Common: 500-700 pounds 37.75-41.50; 705-1000 35.50-39.25.
 Short: 550-750 pounds 40.25-41.25.

CARGILL

ANNOUNCES

A NEW HIGH SPEED GRAIN DRYER

AT MARIETTA, PENNA.

WITH A CAPACITY OF 2500 BUSHELS PER HOUR. FAST UNLOADS AROUND THE CLOCK DURING CORN HARVEST.

Corn bids subject to conformation.

New Dry Corn \$1.43 plus mileage

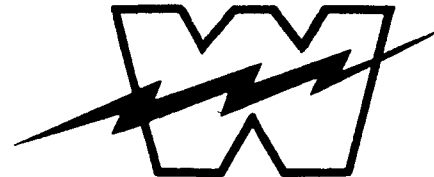
New Wet Corn \$1.45 plus mileage

CALL FOR HOURS AND DETAILS

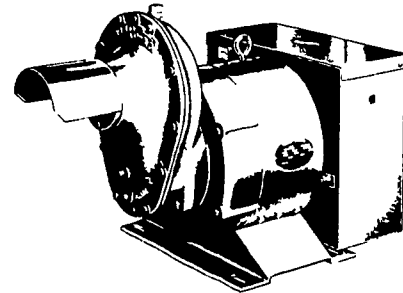
PHONE 717-426-1961

2 miles North of Marietta on Highway 441.

WINPOWER



TRACTOR DRIVEN ALTERNATORS



INSURE YOUR FARM OPERATIONS AGAINST POWER OUTAGES. HAVE EXPERIENCED PEOPLE INSTALL & SERVICE.

CALL NOW



ELECTROMECC
 ELECTROMECHANICAL SERVICE
 ROUTE 222, EPHRATA, PA. 17522

PHONE (717) 733-7911

ELECTRIC MOTOR • GENERATOR • POWER TOOL SPECIALISTS

WORLD'S LARGEST MFG. OF TRACTOR-DRIVEN ALTERNATORS

PTO Units Available From 7 KW to 60 KW 20 Year Warranty

POWER WHEN YOU NEED IT MOST

1800 RPM

INSIST on a FREE WINPOWER DEMONSTRATION at YOUR Farm Before You Buy ANY Tractor Driven Alternator

L. J. EDWARDS
 FARM SALES, Manager

LP-NATURAL GAS GASOLINE DIESEL ENGINE GEN. SETS TO 200,000 WATTS