

**TRY A CLASSIFIED AD - IT PAYS!
CALL 394-3047 OR 626-2191**

JUST A REMINDER . . .

**2,000 HEAD
LAST TWO — FEEDER CATTLE SALES**

Farmers Livestock Exchange, Inc. Winchester, Virginia
State Sponsored — Graded — Uniform Lots — All Breeds
2nd FALL YEARLING SALE -
Friday, October 20, 1972 — 1 P.M.
2nd FEEDER CALF SALE -
Friday, October 27, 1972 — 1 P.M.

Calves vaccinated for BLACKLEG — MALIGNANT
EDEMA — HEMORRHAGIC SEPTICEMIA. All cattle
eligible for interstate shipment. Guarantee "No Bred
Heifers or Stags" in feeder calves only.

P. T. McINTIRE, Sale Manager
Write or phone: 703-662-2946 — office 703-837-1254
NORTHERN VIRGINIA LIVESTOCK, INC.
Box 440 - Winchester, Va. 22601

**PENN SPRINGS FARMS
COMPLETE
DISPERSAL
THURSDAY, OCTOBER 19**

(11:00 A.M.)
ELIZABETHTOWN, PA.

Exit U.S. Rte. 283 at Rheems, 3 miles east of
Elizabethtown and 18 miles west of Lancaster. Go
South thru two stop signs, 1¼ miles, turn right on
Bossler Road; the second farm on the right is Penn
Springs.

105 REGISTERED HOLSTEINS

Blood & T.B. tested within 30 days, Vacc. Exam for Preg.
& Mastitis. Eligible for immediate out of state shipment.

**FIFTY ONE HEAD ARE DIRECT DECENDANTS OF
ONE GREAT COW!!**

Whispering Cedars Lucy High F (VG-89) with 130,200
M. lifetime. She has 51 decendants selling with 45 of
these thru her dtr. Penn Springs Regal Lucy (VG-87
GMD) with 20,663 M. 3.6 percent 748 fat. She has 1 All-
Pa. and 2 Res. All-Pa. progeny. One of the greatest cow
families of the breed.

**HERD CLASSIFICATION — 1 "Ex-92-3E" — 16 "VG (5
at 87 to 89" - 17 "GP (9 at 83 & 84)".**

GREAT PRODUCTION SELLING!!

- 1 sells with 1011 fat, 25,269 M.
- 2 sell with 964 and 905 fat.
- 4 sell with from 847 to 869 fat.
- 7 sell from 700 to 783-lbs fat (1 at 2 yrs)
- 13 sell from 600 to 690-lbs fat.
- 12 sell from 500 to 597-lbs fat.
- 8 sell from 20,000 to 26,000-lbs milk.

**SERVICE SIRES INCLUDE — 2 to Rosafe Citation R - 9
to Citation R Maple - 9 to "Astronaut"
8 to Gar-Bar-Dale Burke Kate - 1 to Alinda Chief - 3 to
Imp. Chief**

**THIS IS A GREAT BREEDER'S HERD AND OFFERS A
RARE OPPORTUNITY TO THE HOLSTEIN BREED!!**

**MAKE SURE YOU ATTEND AND BUY FROM THIS
GREAT DISPERSAL!!**

Sale starts 11:00 A.M.

Lunch Available Catalogs Under Cover

R. AUSTIN BACKUS INC.

Sale Mgrs. & Auctioneers
Mexico, N.Y.

PENNA. HOL. ASSOC.

839 Benner Pike
State College, Pa.

PENN SPRINGS HOLSTEINS

Mr. & Mrs. Robert H. Kauffman
R.1
Elizabethtown, Pa.
717-367-3550

Public Sales Register

SAT. OCT. 14- 11:30 A.M. Public Cinder Road leading from Buck
Sale of Small Farm and to New Providence, ap-
Household Goods located along proximately 1 mile north of Route

372. Sale by David Byers; J.
Everett Kreider and Carl Diller,
Auctioneer.

PUBLIC SALE

OF THE
RALPH USNER FARM

OCTOBER 18, 1972

On the premises along SCHOENECK ROAD LEADING FROM
Route 222 to Cocalico, just outside of the Village of
SCHOENECK in West Cocalico Township, Lancaster County,
Pa.

All That Certain Tract of Valuable Farm Land containing 66
acres more or less of limestone farm land, located on the east
side of Schoeneck Road with approximately 3000 feet of high-
way frontage with a 2½-Story Stone and Frame Dwelling
containing 9 Rooms and Electric Brick Summer House Well
and Running Water Large Stone & Frame Bank Barn; 32 x 60
Frame Tobacco Shed with Cellar and Stripping Room; Other
Farm Buildings.

This is a high-producing farm with level land and at a ideal
location with fine development potential. This farm has been in
the USNER FAMILY since 1904 and is now being offered for
public sale.

Inspection of farm anytime. Inspection of dwelling by-calling
215 267-6294 for appointment.

SALE AT 2:00 P.M.

H. H. LEID, Auctioneer
Eaby and Eaby, Attys.

TERMS BY
RALPH M. USNER

VINTAGE SALES STABLES, INC.

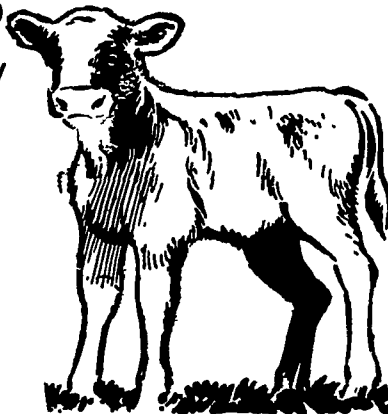
R.D. 1, Paradise, Pa. Box 100

Sale Every Tuesday

STARTING OCT. 3

ATTENTION!

**VEAL CALF
FEEDERS**



Now you can buy U.S.D.A. graded veal calves for your
feeding operation, 25 calves to a pen. Graded by
weight-sex-conformation. Only calves weighing 125
pounds and lighter will be graded.

To eliminate stress on these small calves they will be
unloaded, graded and weighed immediately after
arrival at our auction. They will be placed in a graded
pen for your inspection. Calves will be sold in pen, and
stay in pen until loaded in your truck.

Vintage Sales Stables is now selling from 800 to 900
calves every Tuesday, 7:30 P.M.

If you are unable to come and purchase calves in
person, order buyers can be of service to you by calling
Vintage Sales Stables, 442-4181 or Kenneth E. Her-
shey, 442-4874.

**COLLECTOR'S AND
MUSEUM SALE**

Oil well Drilling Tools and Wood working Machinery at
Auction

MONDAY, OCTOBER 23, '72

at 1:00 p.m.

Located halfway between Linesville and Con-
neautville, Pa., 1 mi. north of Center Road Tavern.

Complete set of oil well drilling tools, brought to this
area in 1897; 30" band saw; jig saw; 14" table saw;
sticker and knives; 16" thickness planer; drill press
patented in 1874; wood boring machine; combination
wood and metal lathe w. 13' 9" bed; leather creaser;
mortiser; 24" drum sander; leather sewing machine
patented 1867; bob sleds; R.R. torch; wagon jack;
spindle shaper; This equipment has been in this family
for 3 generations, some over 100 yrs. old. All in excell.
operating condition.

Terms: Cash.

Owner: Ralph Cole.

Conneautville, Pa. R.D. 2.

Auctioneers: Earl and David Nicolls, Conneautville, Pa.
Ph. 587-6289

SAT. OCT. 14- 10 A.M. Large
Farm Dispersal Located 5 mi. off
Rte. 49 from Elkland, Pa. 139
Very good Holsteins and Farm
Machinery. Sale by Mr. & Mrs.
Wm. A. Peoples, Sr., owners.
Rumsey Sales, Bath, N. Y.
managers.

SAT. OCT. 14- 1 P.M. Feeder Sale
at West Nottingham Auction,
Rte. 276, Rising Sun, Md. Lee
Moore and Lloyd Kreider,
Auctioneers and Sale Managers.

SAT. OCT. 14- 11 A.M. Penn-
sylvania Angus Association
Annual Fall Calf Sale at Penn-
sylvania State University, State
College, Penna.

TUES. OCT. 17- 12 Noon Public
Auction of 94 Ayrshires for Harry
Hedrick, Parkton, Md. located
midway between Baltimore, Md.
& York, Pa. turn West from I83 on
Middletown Rd. and 3 miles to the
farm opposite the church. Tom
Whittaker, Sale Manager,
Brandon, Vt.; Allen Hill, Auc-
tioneer.

— (Continued On Page 34) —

Herr Promoted

Donald E. Herr, Blue Ball, has
been named manager, Marketing
Research department for Victor
F. Weaver, Inc., New Holland.

Upon graduation from
Elizabethtown College in 1969,
Herr served an eight month in-
ternship at the American
Management Association in
Saranac Lake, New York. In 1970
he joined Weaver as Supervisor
in the Marketing Research
department.

Under his new responsibilities
as head of Weaver's Marketing
Research functions, Herr will be
responsible for such marketing
information as product profiles,
market positions, forecasting



**A patented
FERMENTATION
CONTROL PROCESS
. . . proven by
performance.**

Only Silo Guard directs
and controls natural
fermentation in your HIGH
MOISTURE CORN AND
ENSILAGE CROPS.
Retains nutrients, color
and palatability of fresh
cut forages. Forms
propionic acid which adds
high food energy, prevents
excess heating, virtually
eliminates butyric acid
with its unpleasant odor.
Assures increased milk
production or weight
gains. Proved by 12 years
of success by top dairymen
in the U.S. and Canada.
Documented in our
Customer Evaluation
Reports at a lower cost.

**CONTACT
ROY H. MILLER**

55 S. Grant Street
Manheim, Pa. 17545
Phone 665-5213

International Stock Food
Corp.
Waverly, N.Y. 14892